



CITY OF TORRINGTON

PURCHASING DEPARTMENT
140 Main Street, Room 206
Torrington, CT 06790

Pennie Zucco, Purchasing Agent
Phone: (860)-489-2225
Fax (860)-489-2547
Email: pennie_zucco@torringtonct.org

May 31, 2018

Mayor Elinor Carbone
Members of the City Council

RE: BID #AFP-028-052918 "J" Style American (Frink) Hydraulic Snow Plows (2)

The City of Torrington received four (4) proposals for the snowplow bid for the Street Department. One vendor was disqualified for a non-responsive bid.

Bart Truck Equipment West Springfield, MA	\$9,138.00/ea. - \$18,276.00
H.P. Fairfield, LLC Columbia, CT	\$9,873.00/ea. - \$19,746.00
Bigson II, LLC/Equipment Service Hartford, CT	\$8,593.60/ea. - \$17,187.20

After reviewing the submitted proposals, the Fleet Manager and Purchasing Agent request that City Council accept the recommendation and authorize the Mayor to award the purchase of the two (2) plows to Bigson II, LLC/Equipment Service for \$17,187.20 and to have the Mayor act on the behalf of the City regarding the execution of the contract and its administration.

Funding for this vehicle will be from the vehicle replacement account.

Thank you for your consideration in this matter.

Pennie Zucco
Purchasing Agent

cc: E. Castro

2018 MAY 31 PM 3: 09

RECEIVED FOR RECORD
TORRINGTON TOWN CLERK

Pennie Zucco

From: EMIL CASTRO
Sent: Wednesday, May 30, 2018 8:37 AM
To: Pennie Zucco
Cc: Jerry Rollett; Bill Mayers
Subject: (2) "J" style hydraulic plows

Pennie,

After reviewing BID# AFP-028-052918 "j" Style hydraulic snow plow, it is the recommendation of the Fleet Manager to award the Bid to Equipment Service of Hartford, CT for the purchase of (2) snow plows at \$8,593.60 each.

Emil Castro
Fleet Manager
Office: 860-489-2349
Cell: 860-689-3132
emil_castro@torringtonct.org

"J" Style American (Frink) Hydraulic Snow Plows

VENDOR	NON-COLLUSION	BID BOND	Brand	Cost per Plow	PRICE	Delivery
Bart Truck Equip. LLC West Springfield, MA	yes	yes	Henderson	\$9,138.00/ea.	\$18,276.00	n/a
H.P. Fairfield, LLC Columbia, CT	yes	yes	American	\$9,873.00/ea.	\$19,746.00	n/a
Bigson/Equipment Service Hartford, CT	yes	yes	Henke	\$8,593.60/ea.	\$17,187.20	45-60 days APO



City of Torrington

Bid Name "J" Style American (Female) Hydraulic

Bid Number ACP-028. 050918

Date of Opening 5/29/18 Shaw Plows

Time of Opening 11:30 AM

VENDOR	BID BOND	NON-COLLUSION	BID AMOUNT	ADDENDUM
Bart Truck Equipment LLC 858 River St. West Springfield MA 01089-3632	CL \$913.80	✓	9138.00/unit Henderson	
HP Fairfield LLC 9 Route 66 East Columbia CT 06237	✓	✓	9873.00/unit America	
Equipment Service 46 Airport Rd. Middletown CT 06414	CL \$859.36	✓	8593.00/unit Hake	
Donovan Equipment Co Inc. 6 Enterprise Dr. Londonderry NH 03053			11375.00/unit Flint	



**CITY OF TORRINGTON
INVITATION TO BID**

BID #AFP-028-052918 "J" STYLE AMERICAN (FRINK) HYDRAULIC SNOW PLOWS

Bid opening: May 29, 2018 Time: 11:30 A.M. Location: City Hall, 140 Main St. Room 206, Torrington, CT

Bid Bond or Certified Check required with bid: 5%

SUBMIT ONE (1) ORIGINAL AND TWO (2) EXACT COPIES.

The City of Torrington reserves the right to accept or reject any or all bids or any portion thereof, to waive technicalities, and to award the contract as will best serve the public interest.

Omit State and Federal Taxes.

All prices must be F.O.B.: Destination (Torrington) unless otherwise requested.

Dated in Torrington: May 14, 2018

Purchasing Agent Pennie Zucco

Item	Price
Two (2) "J" Style American (Frink) Hydraulic reversible trip edge snow plows with steel moldboard (American Snow Plow model 4511-S1SA) Specifications	\$ <u>8593.60</u> per unit

The Purchasing Agent is authorized to offer City based bidders that exceed the lowest bid by up to 6%, the opportunity to match the lowest bid. A City based bidder within the 6% differential who agrees to accept the amount of the lowest bid will be awarded the bid. When multiple City based bidders agree to accept the amount of the low bid then the City based bidders will be invited to submit a new bid, not to exceed the low bid. The bid will then be awarded to the lowest responsive, responsible bidder.

Bid Submitted By: James Uccello Signature James Uccello
Name of Company Bigson II LLC, DBA Equipment Service
Address 40 Airport Road Title Sales Consultant
Hartford CT 06110 E-mail Jim@EquipmentService.NET
Date 5/22/18
Phone 860 296 7000 Fax 860-296-0373
Comments: _____

SAMPLE FORM
Bid # AFP-028-052918

NON-COLLUSION AFFIDAVIT

STATE OF CT COUNTY OF HARTFORD

I, James Uccello, being first duly sworn, deposes and says that:

1. I am James Uccello
of Bigson II LLC, DAA Equipment Service, the bidder that
has submitted the attached request for proposal
for AFP-028-052918 Snow Plow Bid
2. I am fully informed respecting the preparation and contents of the attached RFP and of all
pertinent circumstances respecting such bid;
3. Such Bid is genuine and is not a collusive or sham Bid;
4. Neither the Bidder nor any of its officers, partners, owners, agents, representatives, employees or parties of
interest, including this affiant, has in any way colluded, conspired, connived or agreed directly or indirectly
with any other Bidder, firm or person to submit a collusive or sham Bid in connection with the work for which
the attached Bid has been submitted nor has it in any manner, directly or indirectly, sought by agreement or
collusion or communication or conference with any other Bidder, firm or person to fix the price or prices in
the attached Bid or of any other Bidder, or to fix any overhead, profit or cost element of the Bid price or the
price of any Bidder, or to secure through any collusion, conspiracy, connivance or unlawful agreement any
advantage against the City of Torrington or any person interested in the proposed Bid; and
5. The price or prices quoted in the attached Bid are fair and proper and are not tainted by any collusion,
conspiracy, connivance or unlawful agreement on the part of the Bidder or any of its agents, representatives,
owners, employees, or parties in interest, including this affiant.

(Printed) James Uccello

(Signed) James Uccello

(Title) Sales Consultant

Subscribed and sworn to before this 22nd day of May, 2018.

Judith Gwosdz

Notary Public Printed

Judith Gwosdz
Notary Public Signature

My commission expires

JUDITH A. GWOSDZ
NOTARY PUBLIC

MY COMMISSION EXPIRES SEP-30, 2019

NOTE: Documents must be signed before and sealed by a Notary Public. Only documents bearing a notary seal will be accepted.

**CITY OF TORRINGTON
TWO (2) "J" STYLE AMERICAN (FRINK) HYDRAULIC SNOW PLOWS
AFP-028-052918
SPECIFICATIONS**

The City of Torrington is seeking quotes for two (2) "J" Style American (Frink) Hydraulic reversible trip edge snow plows with steel moldboard (American Snow Plow model 4511-S1SA or Equivalent). If "Equivalent to" vendor must supply name and specs of the Plow that will be supplied. Must also include the weight of plow.

SPECIFICATIONS:

GENERAL: These specifications describe a Power Reversible Trip Edge "J" style snowplow.

MOLDBOARD ASSEMBLY:

Shall be 45" high and 11' long. The moldboard sheet shall be formed from not less than 10 gauge steel. The upper portion of the moldboard shall project over the cutting edge so as to form a continuous solid integral shield.

- 3/16" C-1085

SPRAY GUARD:

Guard shall bolt to the top moldboard flange or reinforcement. It shall consist of 12" wide x 1/4" thick rubber belt, metal retaining strap and necessary mounting hardware.

CUTTING EDGE:

C-1085

The cutting edge one (1) in number should be from 1/2" x 8" C-1085 steel, punched to 12" centers. The cutting edge shall be reversible for double wear.

CURB SHOES:

The moldboard shall have two fabricated steel curb shoes (one at each end of the moldboard).

TRIPPING EDGE MECHANISM:

The edge shall be of the single edge design, which shall activate whenever the cutting edge comes into contact with an obstruction on the pavement. Spring adjustment shall be provided so as to alter the pre-charge of the springs for varying plowing conditions.

- Support tube should be a heavy duty thick wall type.
- Reverse method: hydraulic ram reverse.

**AN AFFIRMATIVE ACTION/EQUAL OPPORTUNITY EMPLOYER
MBE'S WBE'S AND SBE'S ARE ENCOURAGED TO APPLY**

The City of Torrington reserves the right to award or reject any or all bids, or any portion thereof, to waive technicalities, to award the contract to a bidder other than the lowest bid and to award the bid and/or contracts to one or more bidders submitting essentially identical proposals and that, in the city's judgment, will best serve the public interest.



Quality Installation is our Priority

40 Airport Road Hartford, CT 06110
Phone: 860-296-7000 Fax: 860-296-0373

Bid#AFP-028-052918

May 22, 2018

J-Style American (Frink) Hydraulic
Snow Plow

City of Torrington
140 Main Street
Torrington CT.06790

We are Pleased to Quote the Following:

(2) Henke 45R11-J -- 11 Foot Reversible Snowplow

45" high @ intake with 3/16" thick, "inverted J" style moldboard
(10) vertical ribs, notched for water drainage
hydraulic power reverse with (2) 3" x 16" x 3" S.A. cylinders & cushion valve
heavy-duty triangular shaped A-Frame with 3/8" thick upper & lower plates
A-Frame-to-pushframe pivot pin is 2.5" diameter
heavy-duty, tubular steel pushframe
adjustable tension, torsion trip-edge with full length, 1.875" diameter trip shaft
mechanical trip stop prevents over-stressing trip springs
1/2" x 8" SAE 1084 high carbon steel cutting edge
rubber shield, curb shoes
universal hitch, plow portion (30.5" c-c)

Weight 2693lb's

FOB: Torrington, CT.....\$ 8,593.60 Per Unit

QUOTE VALID: 30 Days

DELIVERY: 45-60 Days from Receipt of PO

Chassis must have a 10,000lb front axle & suspension, and front frame extensions. Hydraulic system must be 5-15gpm, 2000-3000psi capable, with (1) 4-way, double acting valve for reversing, and (1) 3-way (or 4-way) valve for lift.

Respectfully Submitted,

Jim Uccello

Jim Uccello
Sales Consultant
Equipment Service

ACCEPTANCE OF PROPOSAL: The above prices, specifications, and conditions are satisfactory and are hereby accepted.

SIGNED: _____

DATE: _____

43R11J Tripedge Snowplow

Moldboard

Moldboard shall be a weldment consisting of ten ½" thick plasma cut ribs, one 3x4x.5" lower angle, one 3x2.5x3/8" upper angle. Incorporated in each rib bottom shall be a plasma cut hole in which will reside a 1.875" trip shaft. Two round bar braces shall each pass through, and be fully welded to each rib. The round bar shall be 1" cold rolled. Minimum of ¼" fillet weld shall be used in all accessible areas. Moldboard shall be faced with smooth rolled 10 gauge minimum steel with a 12" rubber shield attached to the upper angle.

Single section trip assembly

Trip assembly shall be a weldment of one 4x4x.75 angle, seven trip shaft ears 1" thick. The trip shaft ears shall be covered with a minimum 3/16 x 10" cover plate. Five torsion springs (6th spring optional) of .75" square wire shall be tension-adjustable by means of Five 5/8" Gr8 full thread bolts retaining six 1.25" thick spring retainers.

Pushframe and A-Frame

Pushframe shall be a minimum of 4x4x3/8 tube 109" long, with 3/8 plate welded to the top and bottom to retain a center pivot bushing of 3.5" OD, 2.5" ID round tube, min. 5.5" long. Center pivot area shall be further reinforced with two 2x .5" thick bars welded between the top and bottom 3/8" plates. Eight 5/8" thick plasma cut "wrap around" moldboard attaching ears shall be welded to the front of the pushframe. Two pairs of these ears shall also incorporate 2 position pin holes for adjusting moldboard layback. A frame shall be a weldment of 3/8" thick plasma cut top and bottom plate, 5"x.5" thick sideplates, .75" thick front plate, and 6.75x1" thick backplate. Top and bottom plate shall incorporate angle cylinder mount pin holes. Angle cylinder mount pin holes shall be further reinforced with min 1.125 plate to support the 1.25" cylinder pins. Two 1" thick pushframe attaching ears shall be welded to the front plate.

Pushframe shall be connected to the moldboard by two stabilizer bar weldments of 2x2x.25" tubing, with each lower connection point reinforced with two 5/8" thick plates

Reversing cylinders

Reversing cylinders shall be single acting, minimum 3" bore x 16" stroke, 2500 psi operating pressure minimum, with rod end wear ring and poly pack seals. Rod plating shall be minimum .001 hard chrome, or nitrited surface finish, as specified.

Surface Preparation and Paint

Unit shall be cleaned of oil, grease, dust, mill scale, coatings, oxides, corrosion products, and other foreign materials in accordance to The Society for Protective Coatings SP6/ National Association of Corrosion Engineers No. 3 Commercial Blast Cleaning prior to the application of any protective coatings.

Unit shall be painted using DuPont Imron 2.1 High Gloss Aliphatic Polyurethane Enamel or equivalent.

Volatile Organic Compound concentration shall be no higher than 2.1 lbs/gal. averaged when mixed

A minimum of one coat of primer and one coat of paint shall be applied over the entire unit resulting in a durable coating between 2.5 to 3.5 mils thick

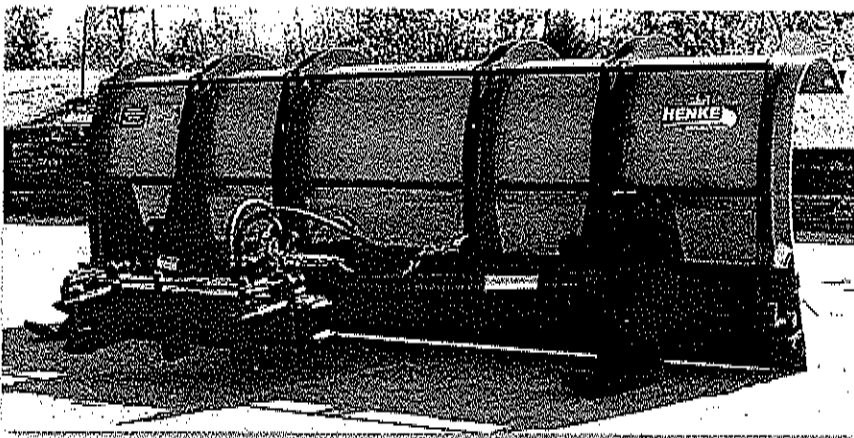
Paint shall be able to withstand a minimum of 1000 hours while being submerged in a salt fog without blistering or acquiring surface defects in accordance to ASTM B-117

Distributed By:

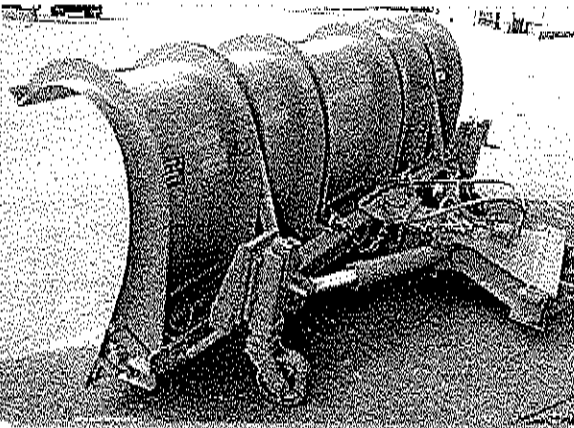
HENKE

Henke Manufacturing Corporation

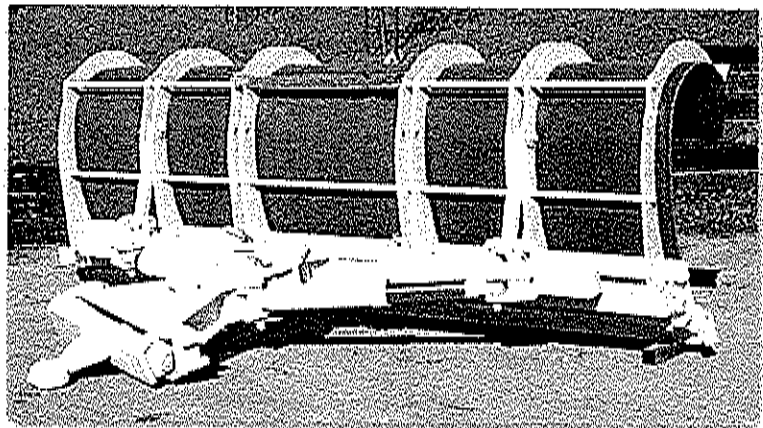
Reversible Truck Mounted Inverted "J" Torsion Spring Trip Edge Snowplows



▲ Henke 43R111 Poly Shown with Optional Runners and Quick Hitch



▲ Henke 43R111 Shown with Optional Steel Wheels



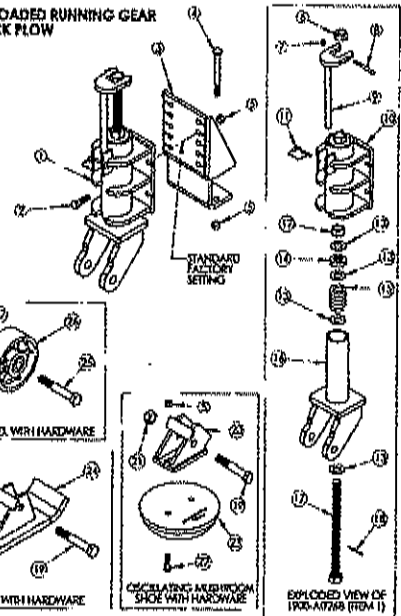
▲ Henke 43R111 Poly Shown with Optional Curb Guards

Product Features:

- Available in 10, 11, 12' lengths
- Five torsion springs (6th spring optional) of 7/8" square wire shaft for tension adjustable

- 4" x 4" x 3/8" tube 160' tonneplast frame
- Reversing cylinders
- 9" bore x 16" stroke
- Polymer or steel moldboards

SPRING LOADED RUNNING GEAR
FOR TRUCK FLOW



Built Tough – Built to Last!

3070 Wilson • Leavenworth, KS 66048 • (913) 682-9000 • Fax (913) 682-0300
www.henkemfg.com • Toll Free 888-682-9010