



Litchfield Hills Council of Elected Officials

September 2004

Naugatuck River Greenway Assessment

Phase One (Stillwater Pond to Rte 118)



Torrington, Harwinton, and Litchfield, CT



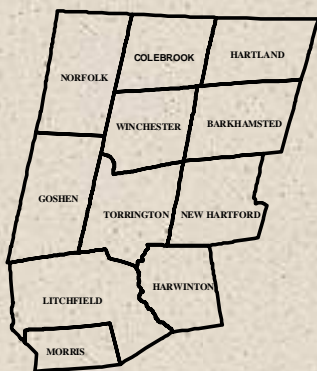
Naugatuck River Greenway Assessment

Purpose

- To better understand the natural and cultural resources of the River Corridor
- To identify and promote opportunities for improving water quality.
- To develop a conceptual plan for improving public access, enjoyment, and passive recreational use of the River.

Study made possible by a grant from DEP and the cooperation of participating agencies and individuals

Torrington, Harwinton, and Litchfield, CT



Naugatuck River Greenway Assessment

Greenway Assessment Team Members

The Naugatuck River Greenway Assessment was prepared through the cooperative efforts of the following individuals and agencies.

Kim Barbieri, Inland Wetlands Agent, Torrington

Richard Calarco, Director, Torrington Parks and Recreation

Em Cleminshaw, Litchfield Planning and Zoning Commission

Marty Connor, City Planner, Torrington

Christina Emery, Economic Development Coordinator, Torrington

Sean Hayden, Resource Conservationist, Northwest Conservation District

Kathy Johnson, District Conservationist, NRCS

Elaine LaBella, Land Protection Director, Housatonic Valley Association

Rick Lynn, Planning Director, LHCEO

Mark McEachern, Executive Director, Torrington Historical Society

Don Mysling, Fisheries Biologist, CT DEP

Susan Peterson, Housatonic Watershed Coordinator, CT DEP

Jerry Rollett, Public Works Director, Torrington

Robbette Schmit, Naugatuck River Watershed Association

William Tracy, Chairman, Harwinton Planning Commission

King's Mark Environmental Review Team



Naugatuck River Greenway Assessment

Report Contents

- Introduction and Acknowledgements
- Highlights from King's Mark Study
- Erosion and Sediment Control
- Trail Development Potential
- Priority Recommendations for Improved Public Access
- Implementation

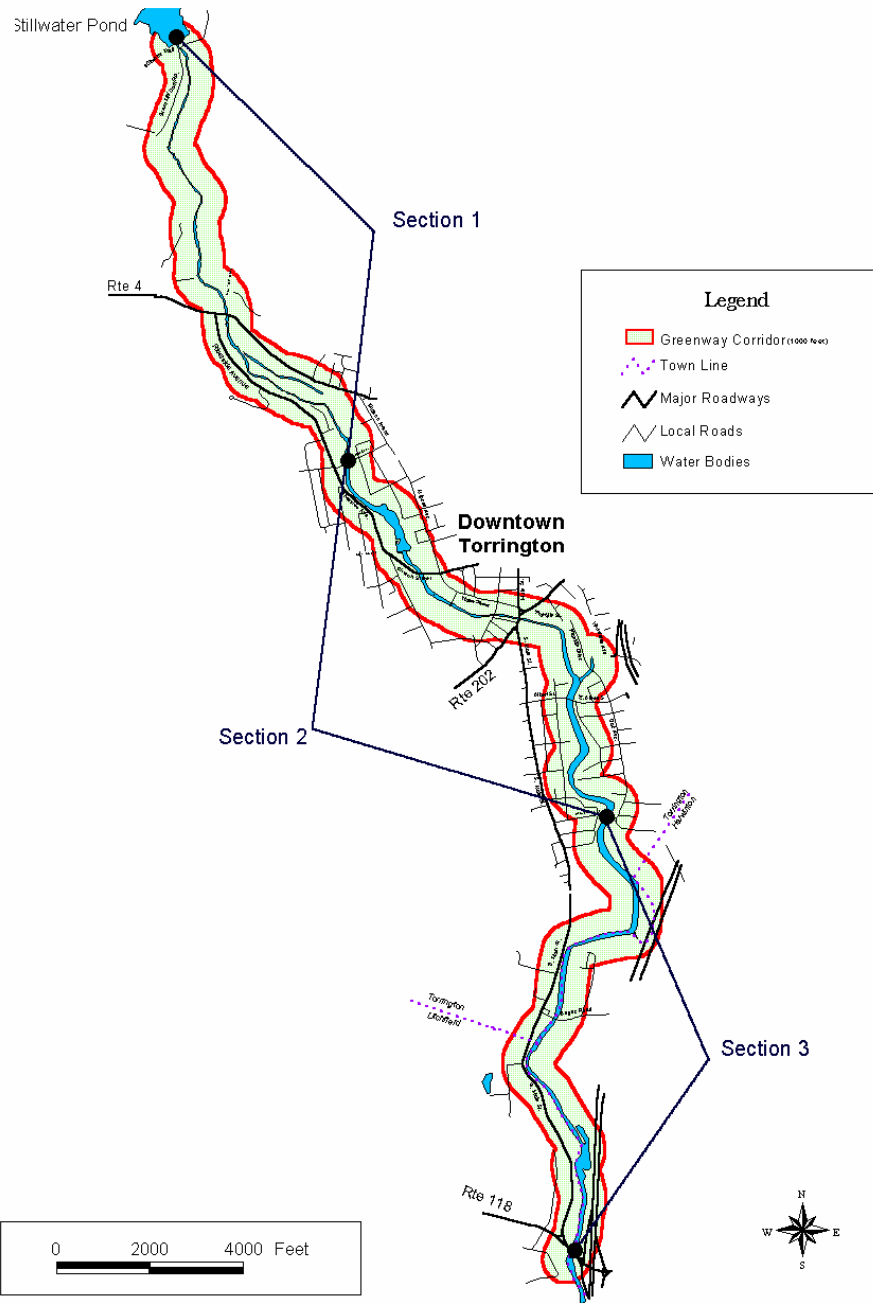
*Copy of full draft report available for review at
LHCEO or town/city halls of Torrington, Harwinton,
and Litchfield.*

Naugatuck River Greenway Study



GIS Mapping by LHCEO

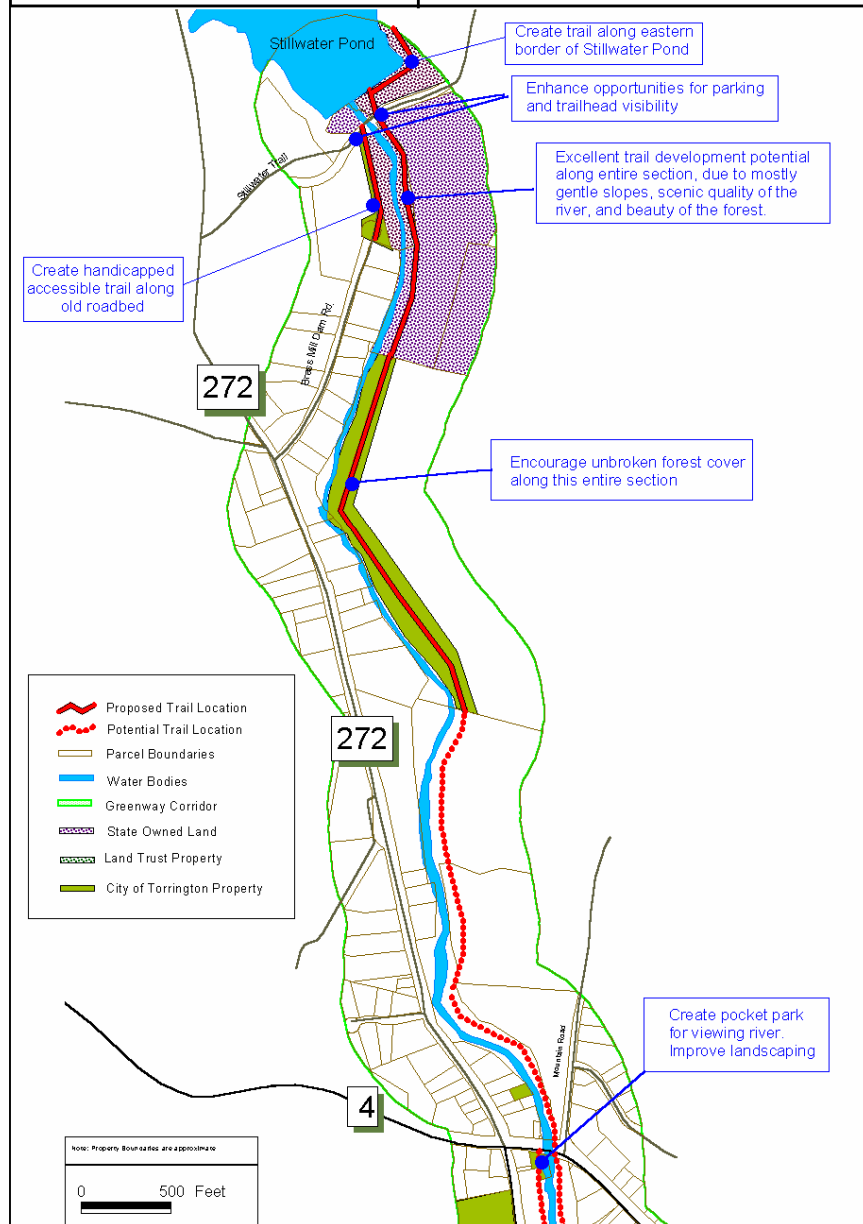
STUDY CORRIDOR

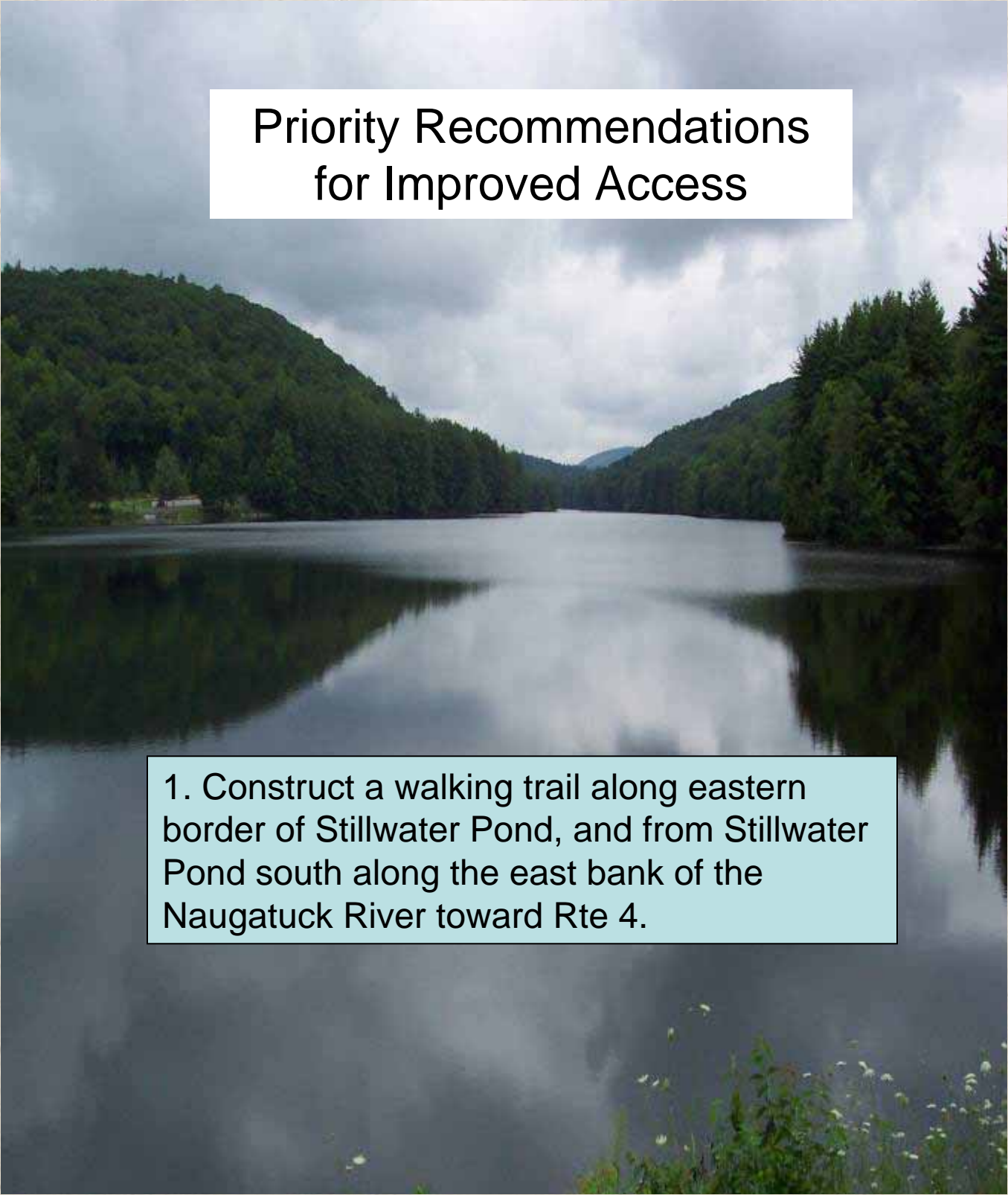


Naugatuck River Greenway Study



TRAIL PLAN Section One-A

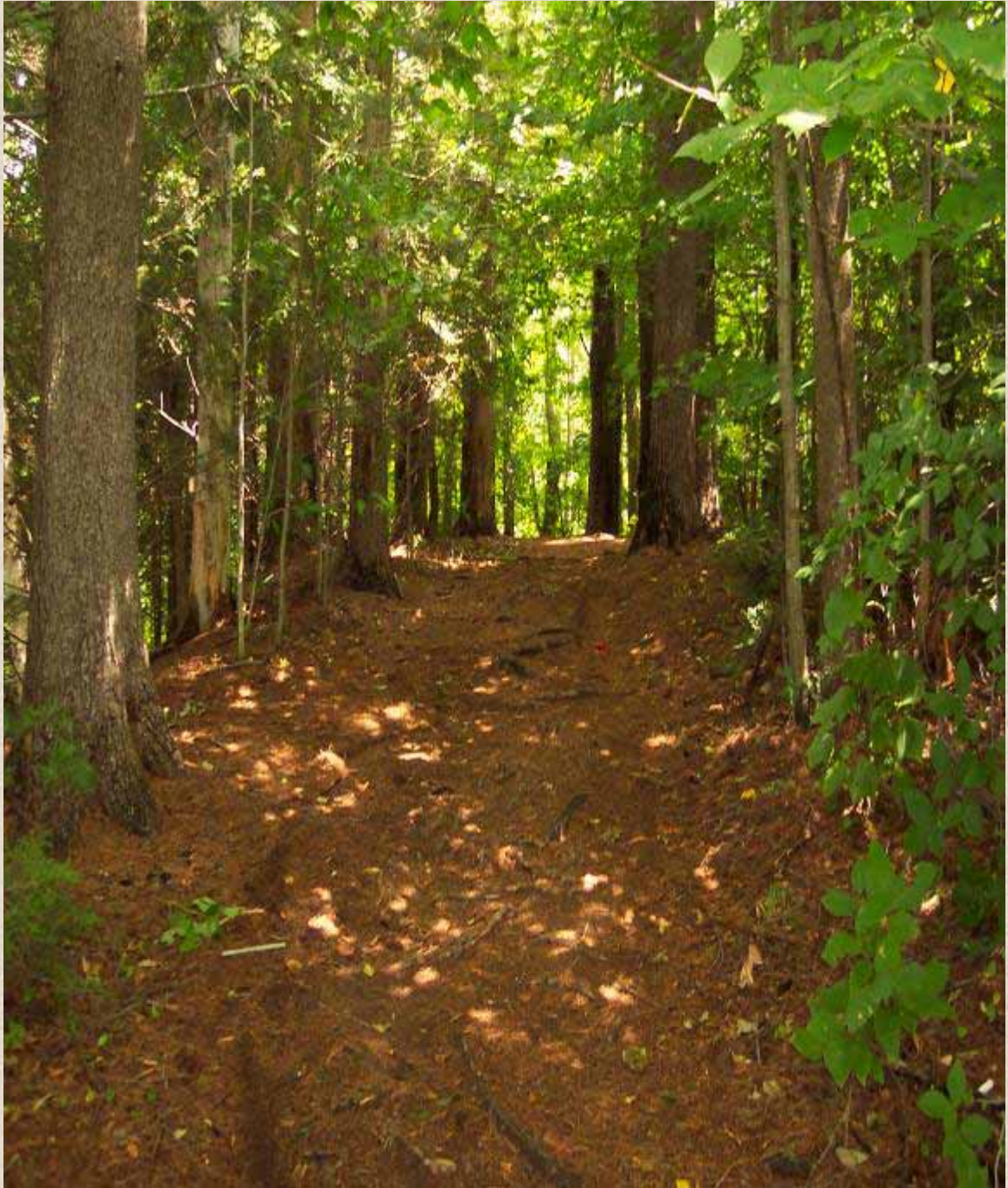




Priority Recommendations for Improved Access

1. Construct a walking trail along eastern border of Stillwater Pond, and from Stillwater Pond south along the east bank of the Naugatuck River toward Rte 4.

Existing trail at Stillwater Pond



Existing trail at Stillwater Pond





2. Construct a handicapped accessible trail along the old roadbed from Brass Mill Dam Road to Stillwater Trail. Construct a small parking area off Stillwater Trail to serve this area.



3. Construct a small pocket park on municipal property along the west bank of the River just south of the Route 4 crossing

Example of “pocket park” along the Naugatuck River in Beacon Falls.

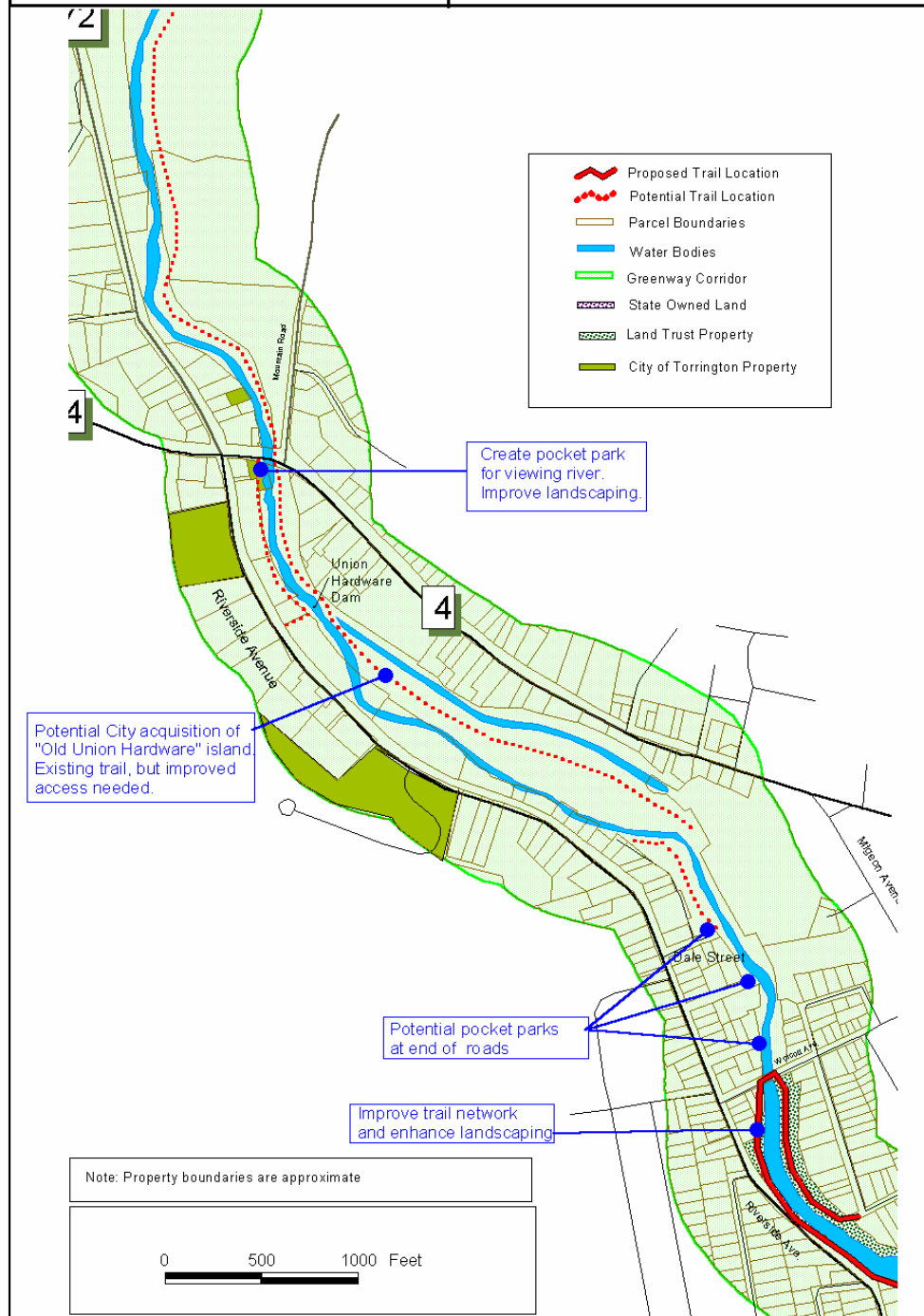


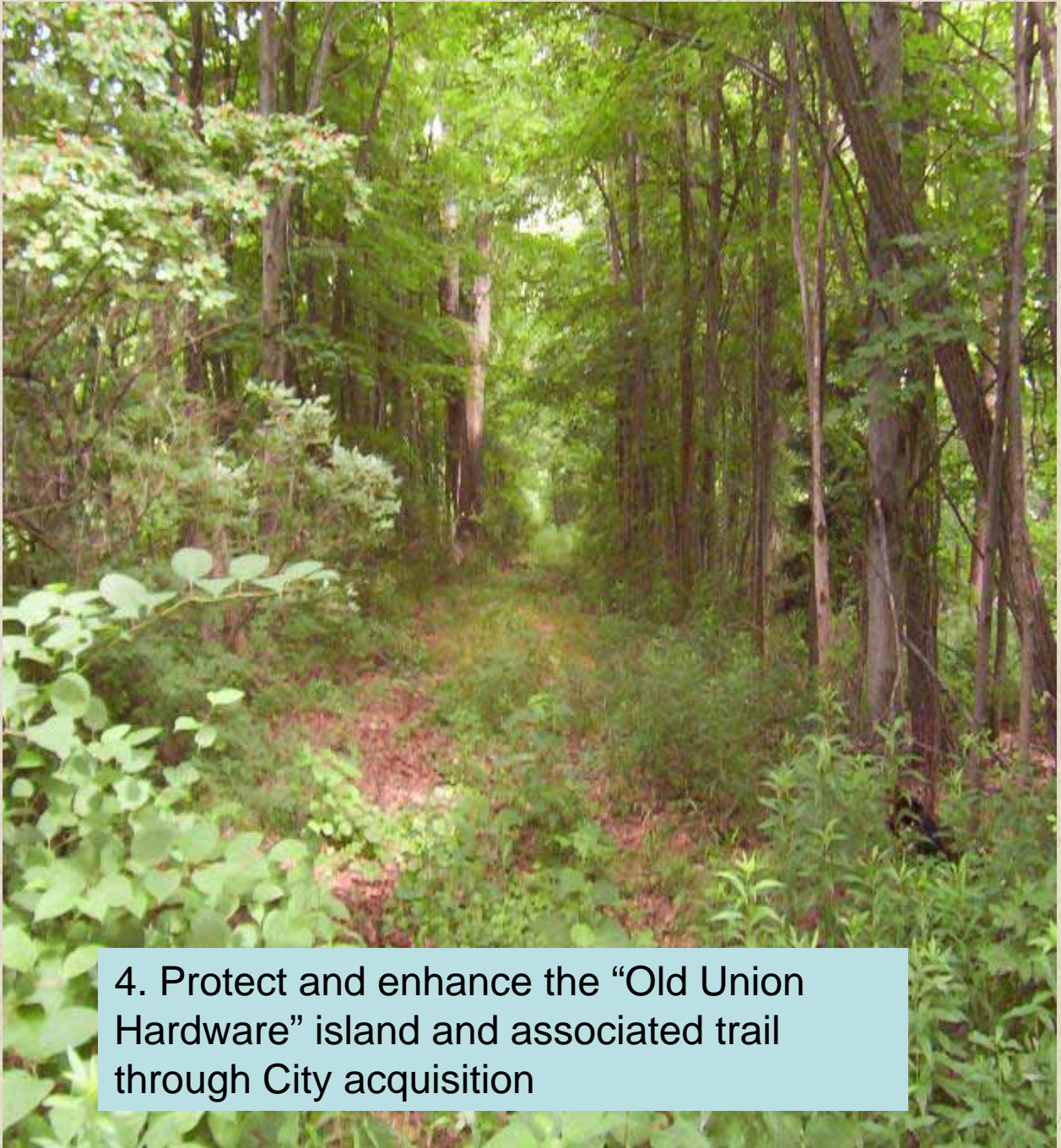
Naugatuck River Greenway Study



GIS Mapping by LHCEO

TRAIL PLAN Section One-B





4. Protect and enhance the “Old Union Hardware” island and associated trail through City acquisition



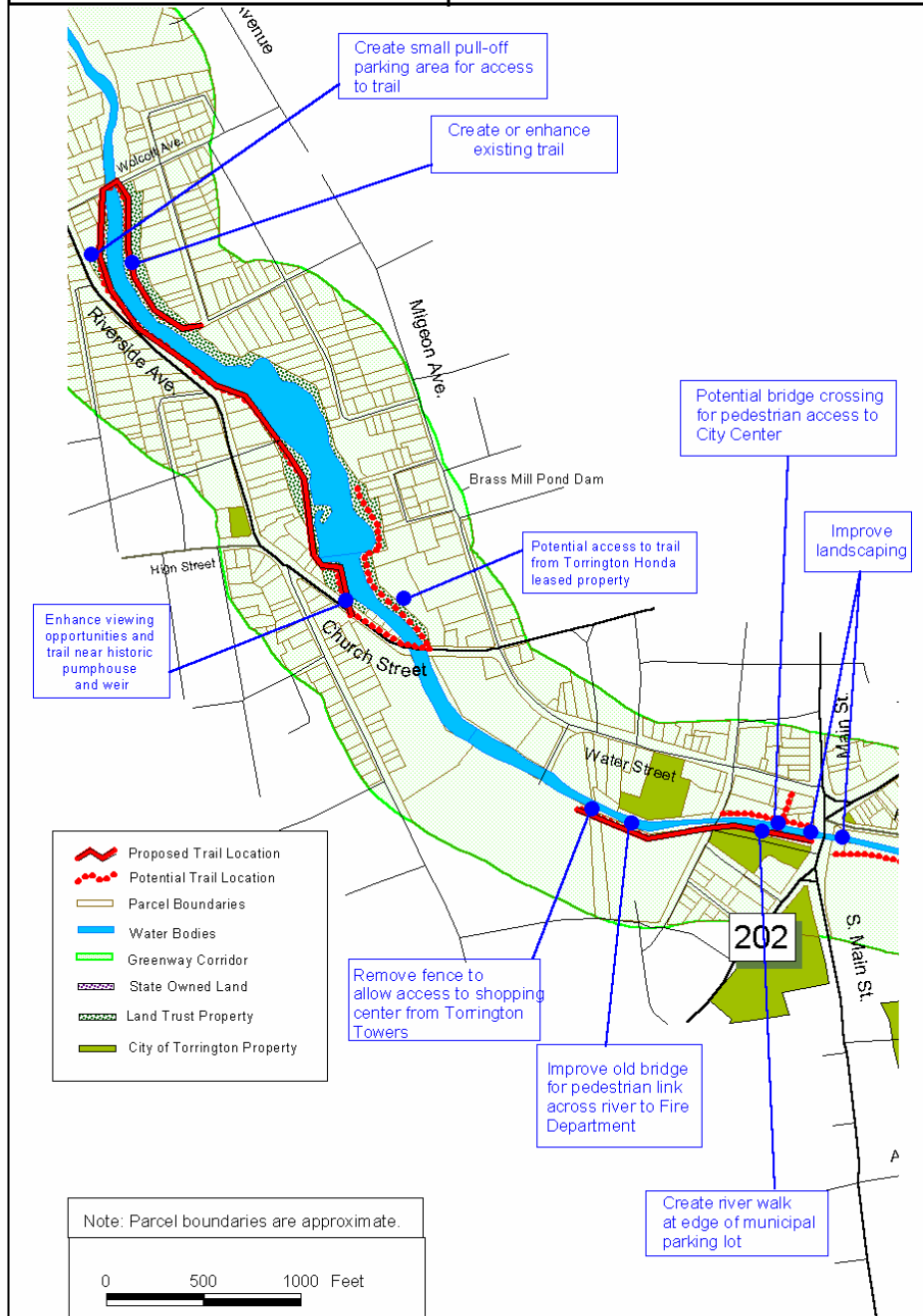
5. Enhance landscaping and opportunities for viewing the river at the terminus of Dale Street, Lawn Street, South Street, and along River Street

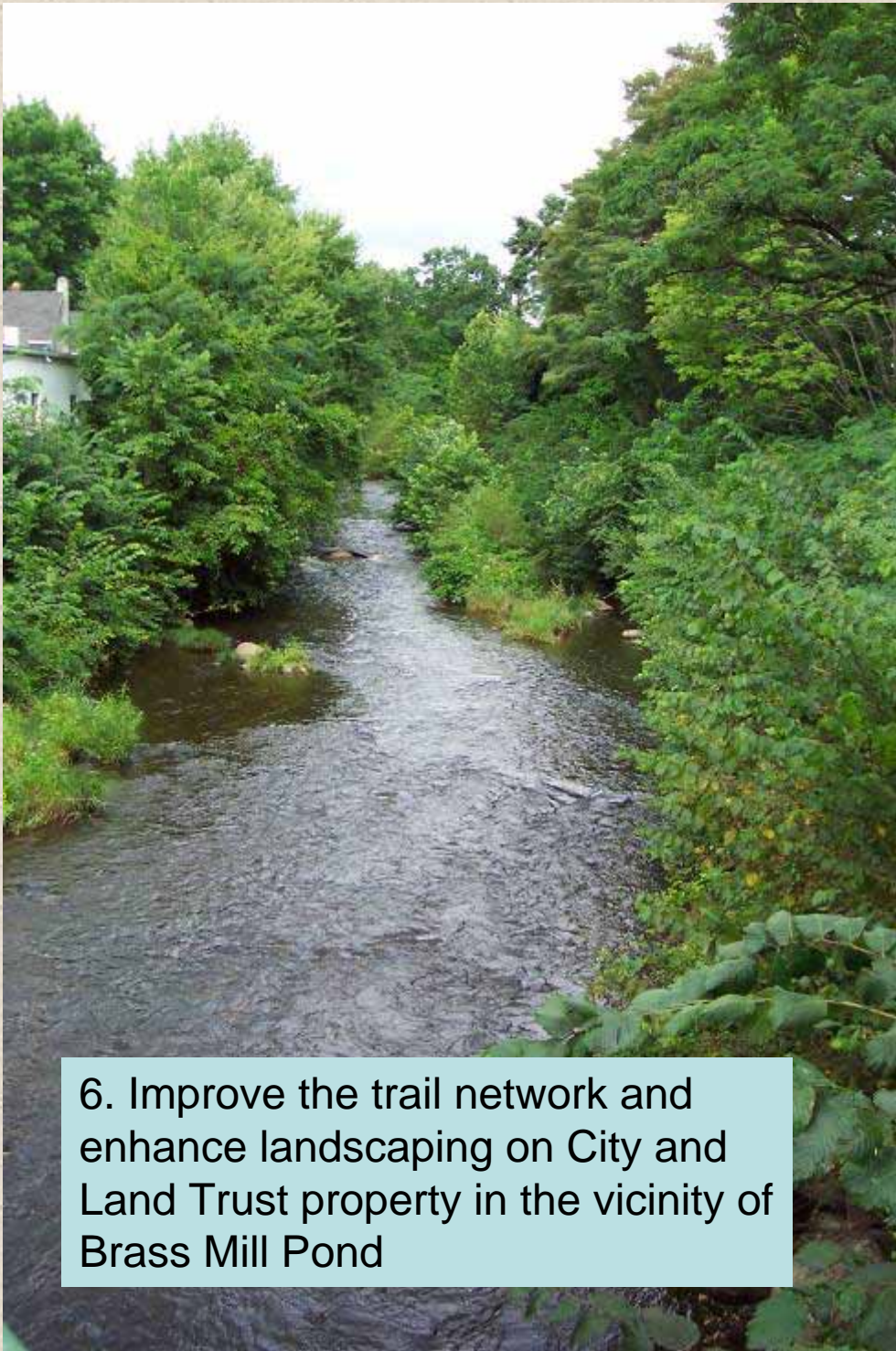
Naugatuck River Greenway Study



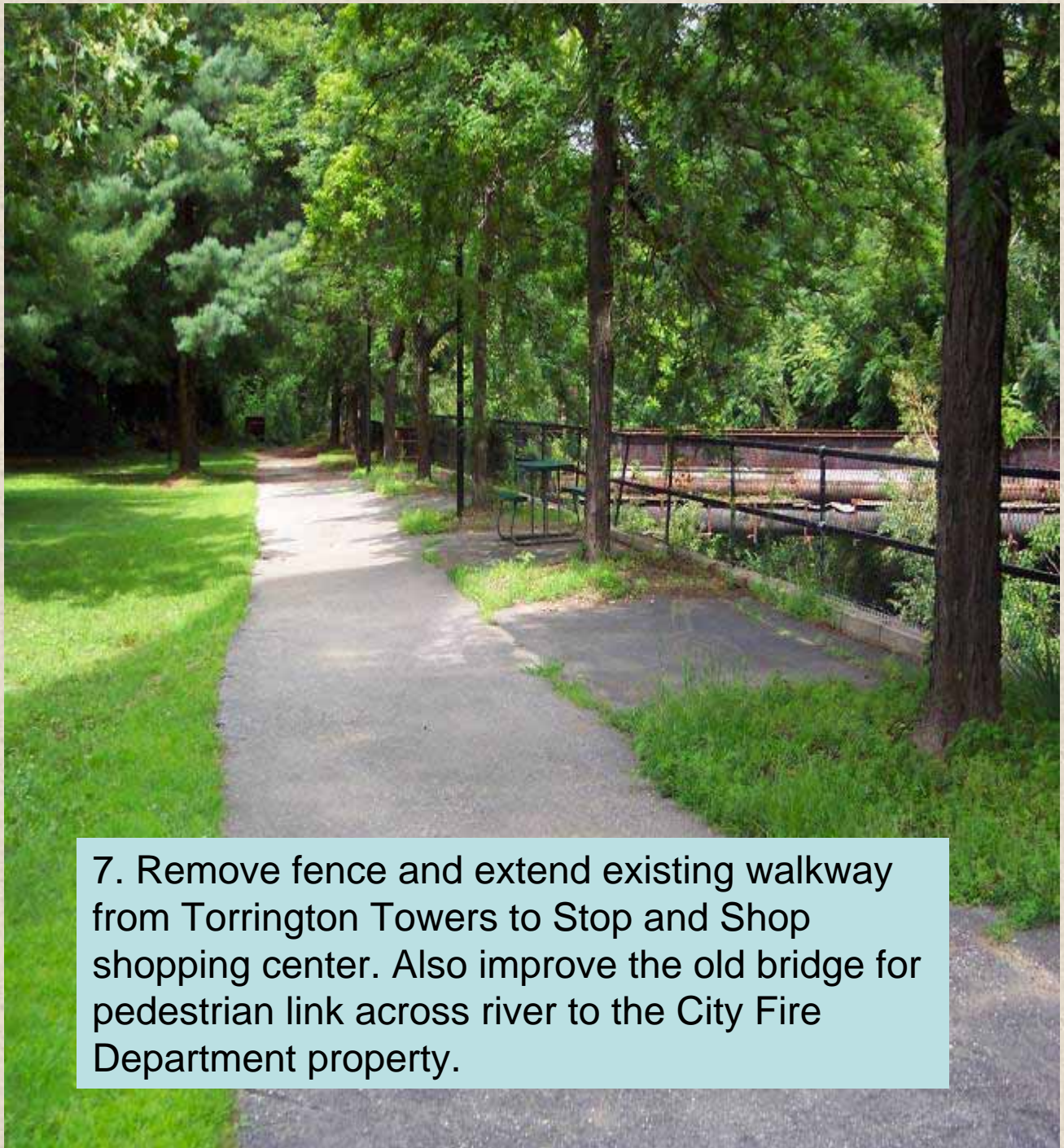
GIS Mapping by LHCEO

TRAIL PLAN Section Two-A

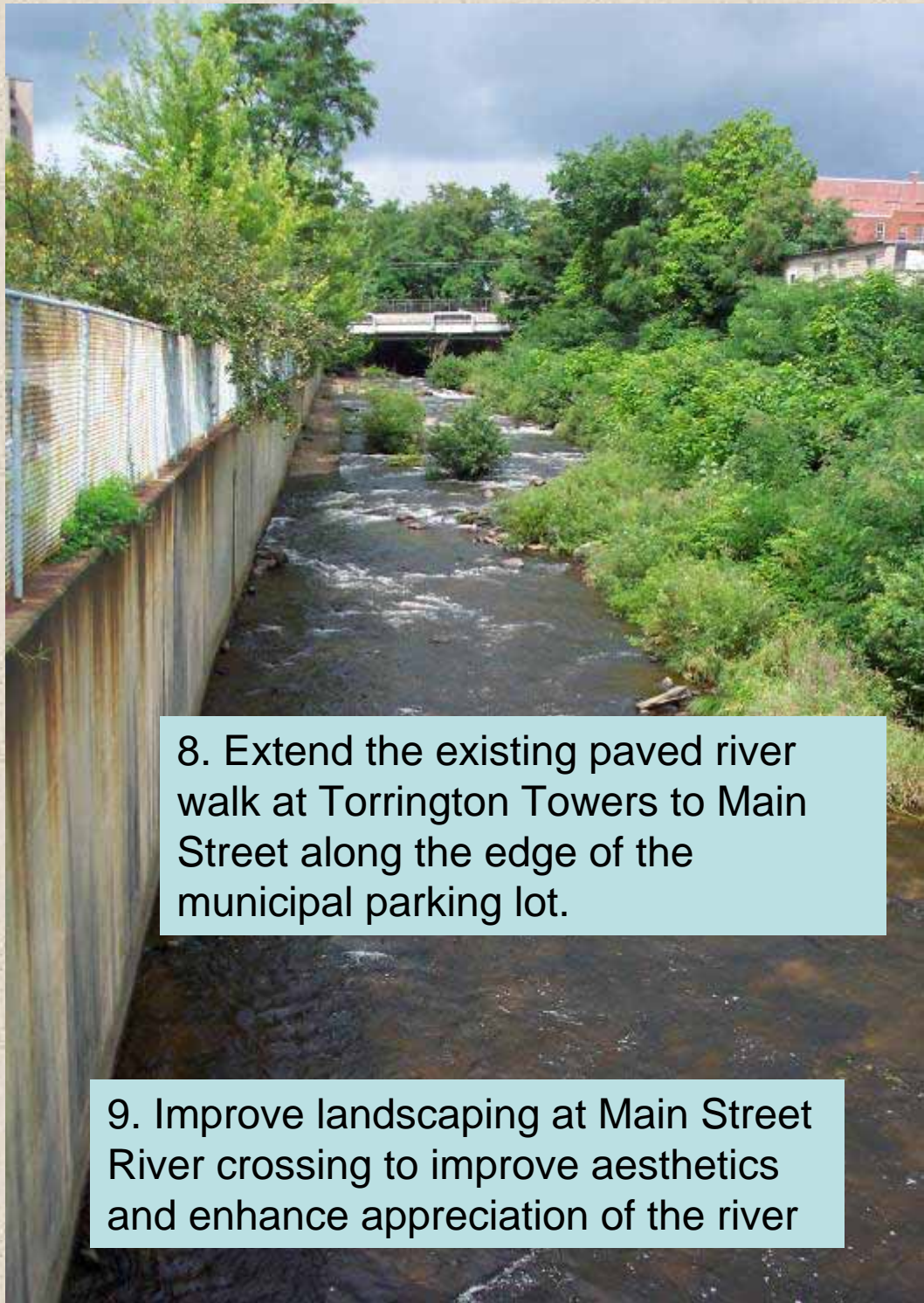




6. Improve the trail network and enhance landscaping on City and Land Trust property in the vicinity of Brass Mill Pond



7. Remove fence and extend existing walkway from Torrington Towers to Stop and Shop shopping center. Also improve the old bridge for pedestrian link across river to the City Fire Department property.



8. Extend the existing paved river walk at Torrington Towers to Main Street along the edge of the municipal parking lot.

9. Improve landscaping at Main Street River crossing to improve aesthetics and enhance appreciation of the river



Drawing by local architect Michael Boe of potential riverwalk upstream from Main Street bridge in Torrington.

Example of landscaped cement walls along a watercourse.

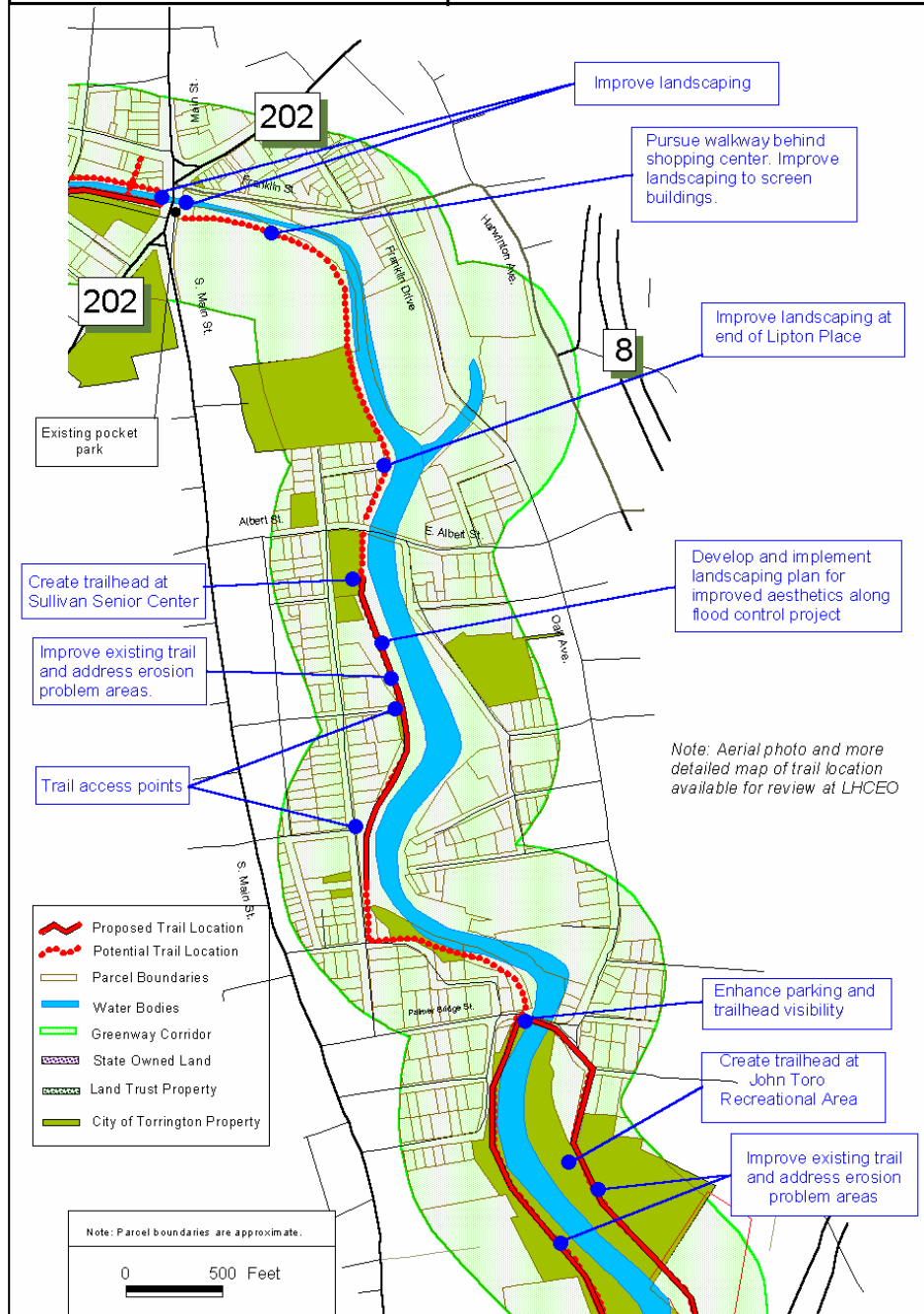


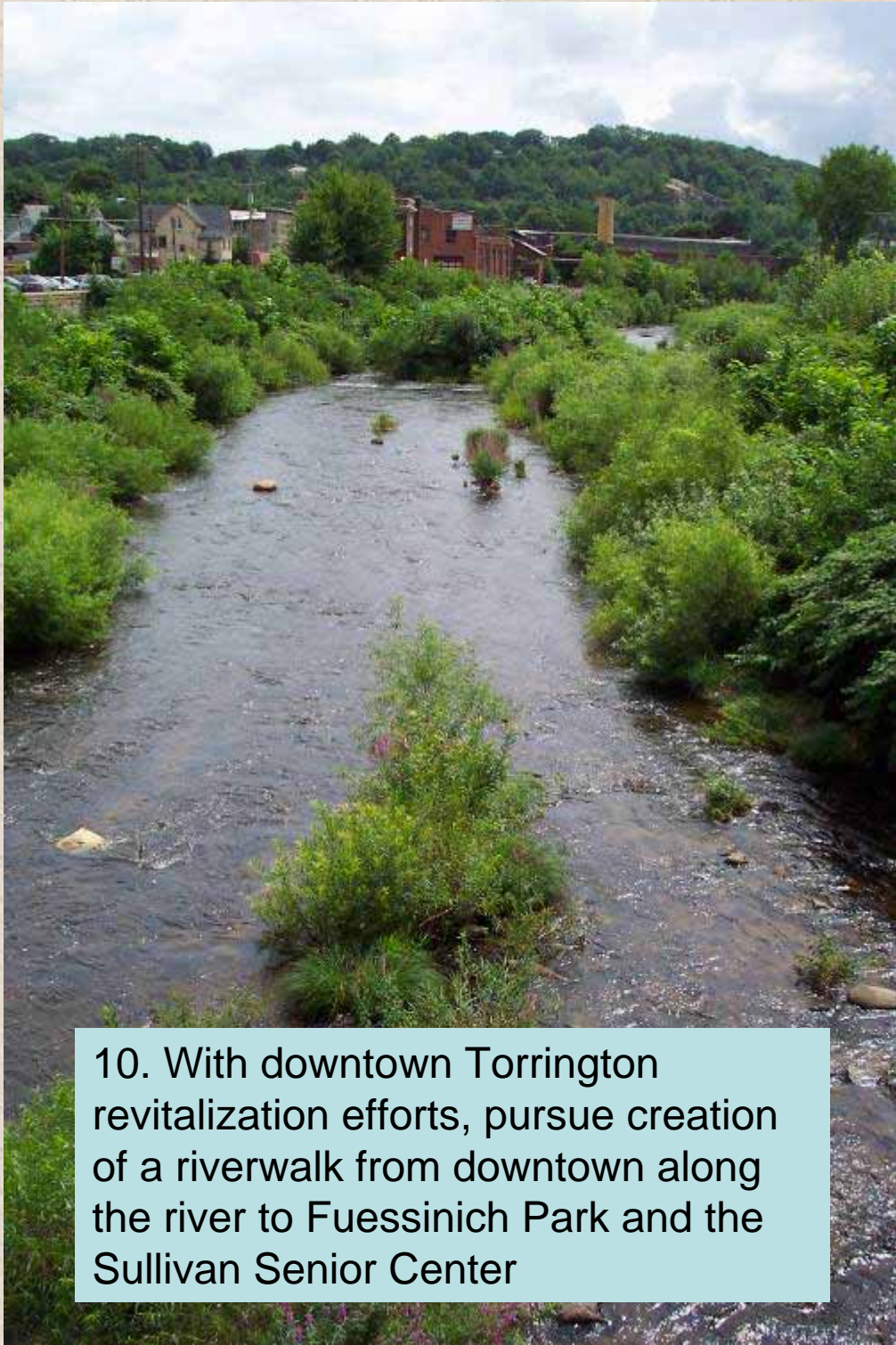
Naugatuck River Greenway Study



GIS Mapping by LHCEO

TRAIL PLAN Section Two-B





10. With downtown Torrington revitalization efforts, pursue creation of a riverwalk from downtown along the river to Fuessinich Park and the Sullivan Senior Center



11. Create trailhead at Sullivan Senior Center, improve existing trail, and develop a landscaping plan for improved aesthetics along riverbank.

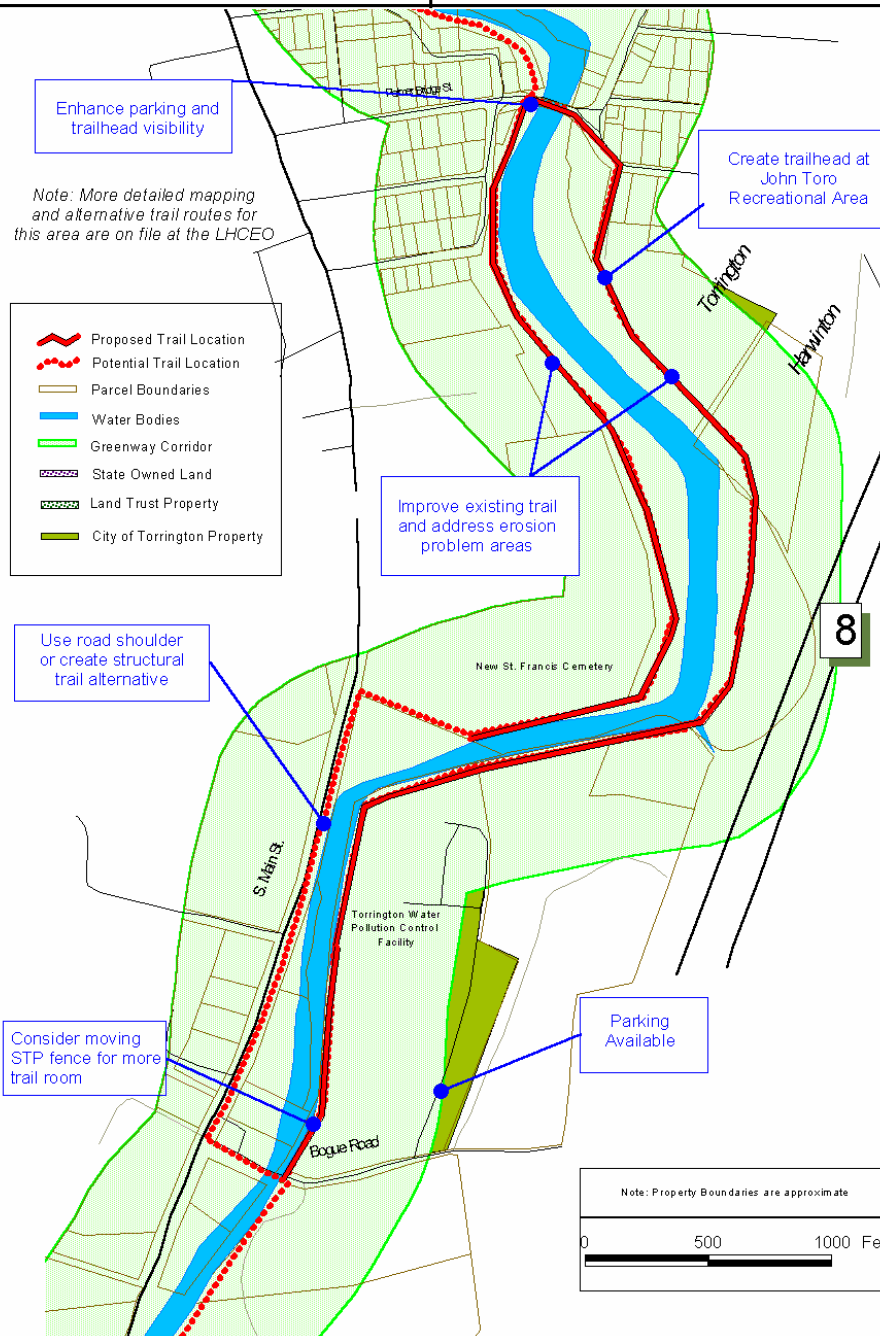


Naugatuck River Greenway Study



GIS Mapping by LHCEO

TRAIL PLAN Section Three-A



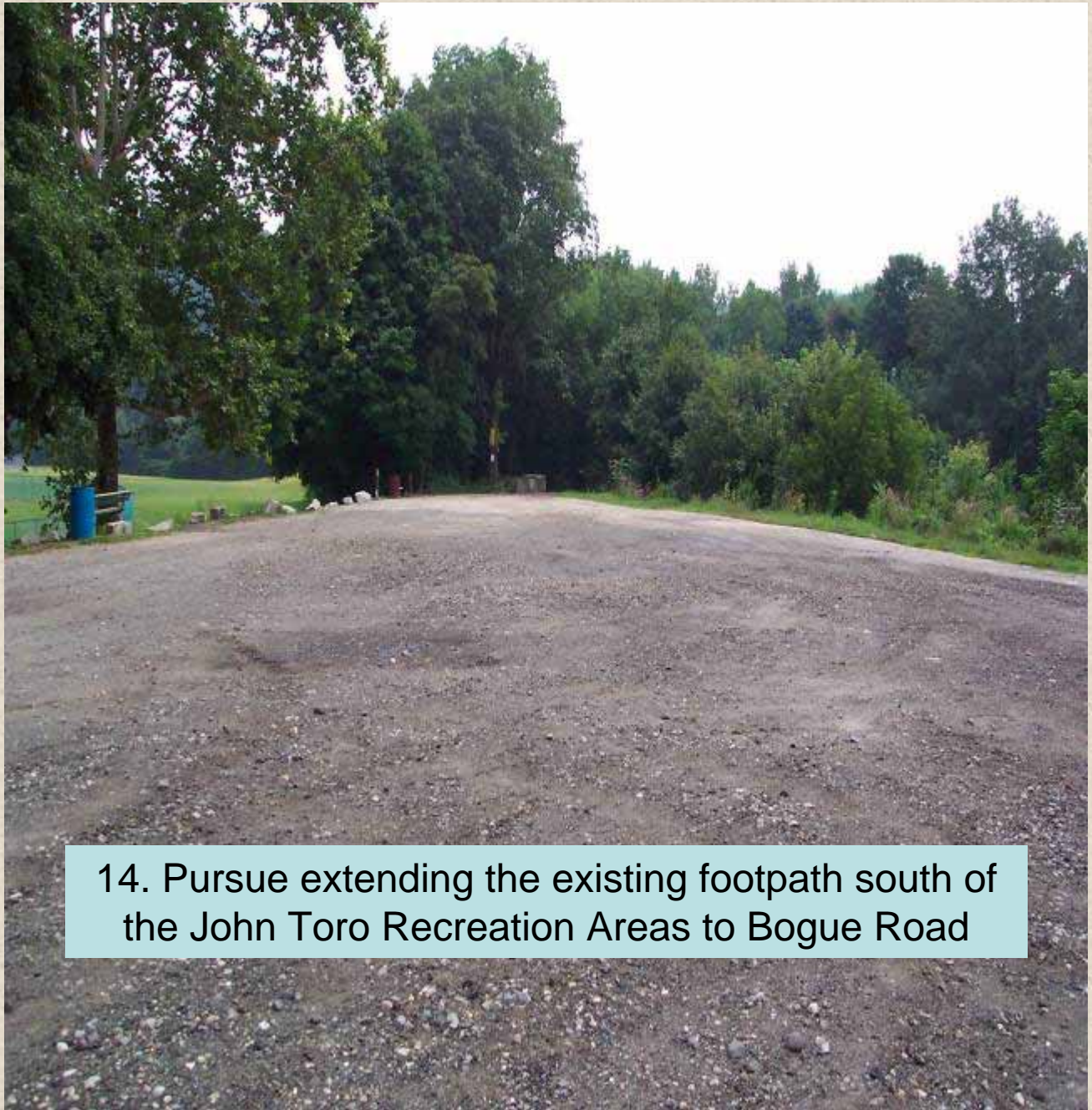


12. Enhance parking and trailhead visibility at Palmer Bridge Street and create a trailhead at the John Toro Recreational Area.





13. Address the severe erosion problems on the existing trail south of Palmer Street Bridge, and take steps to control motorized vehicles along the trail. Develop a vegetation management plan for this area and pursue implementation in cooperation with the U.S. Army Corps of Engineers.

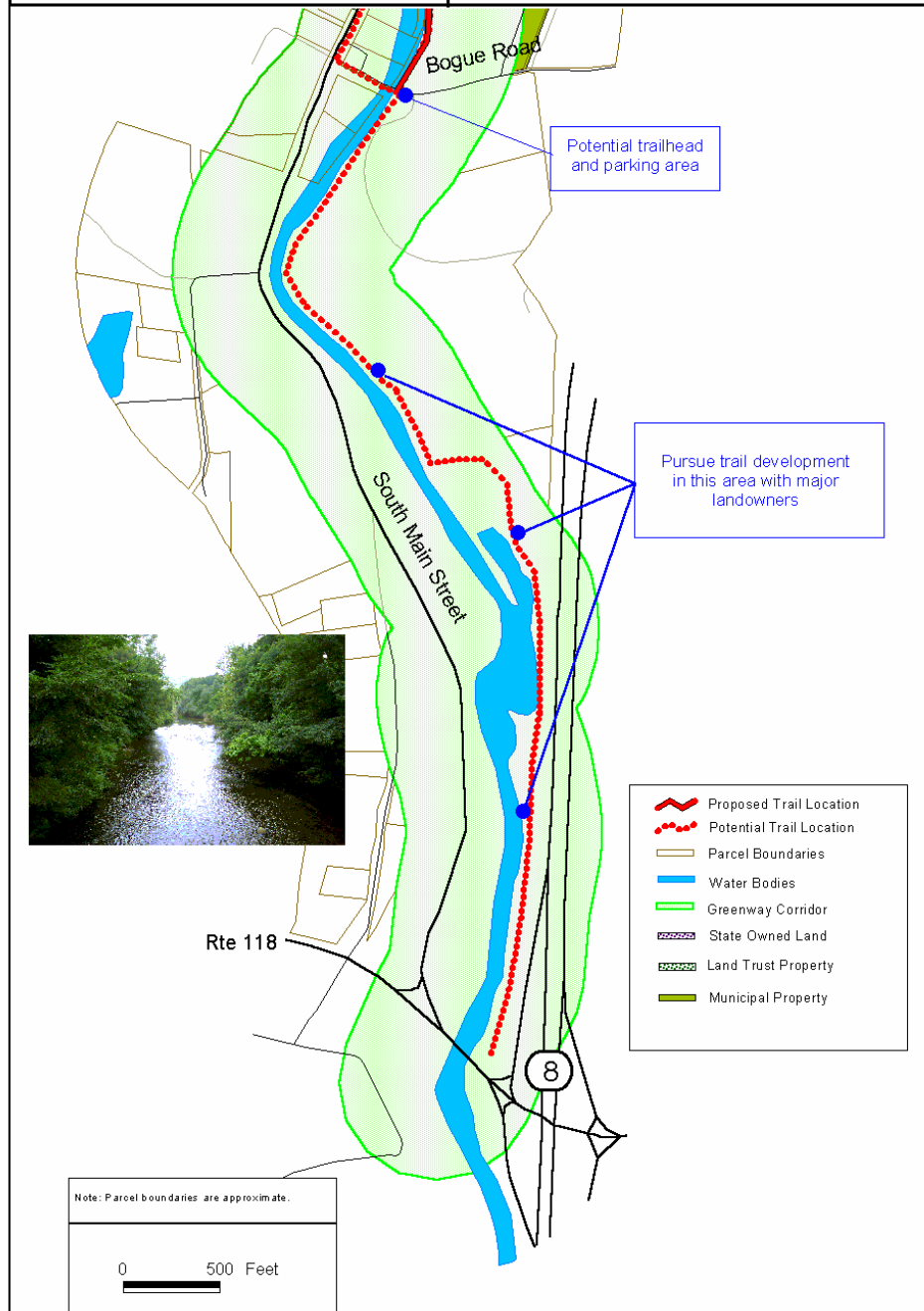


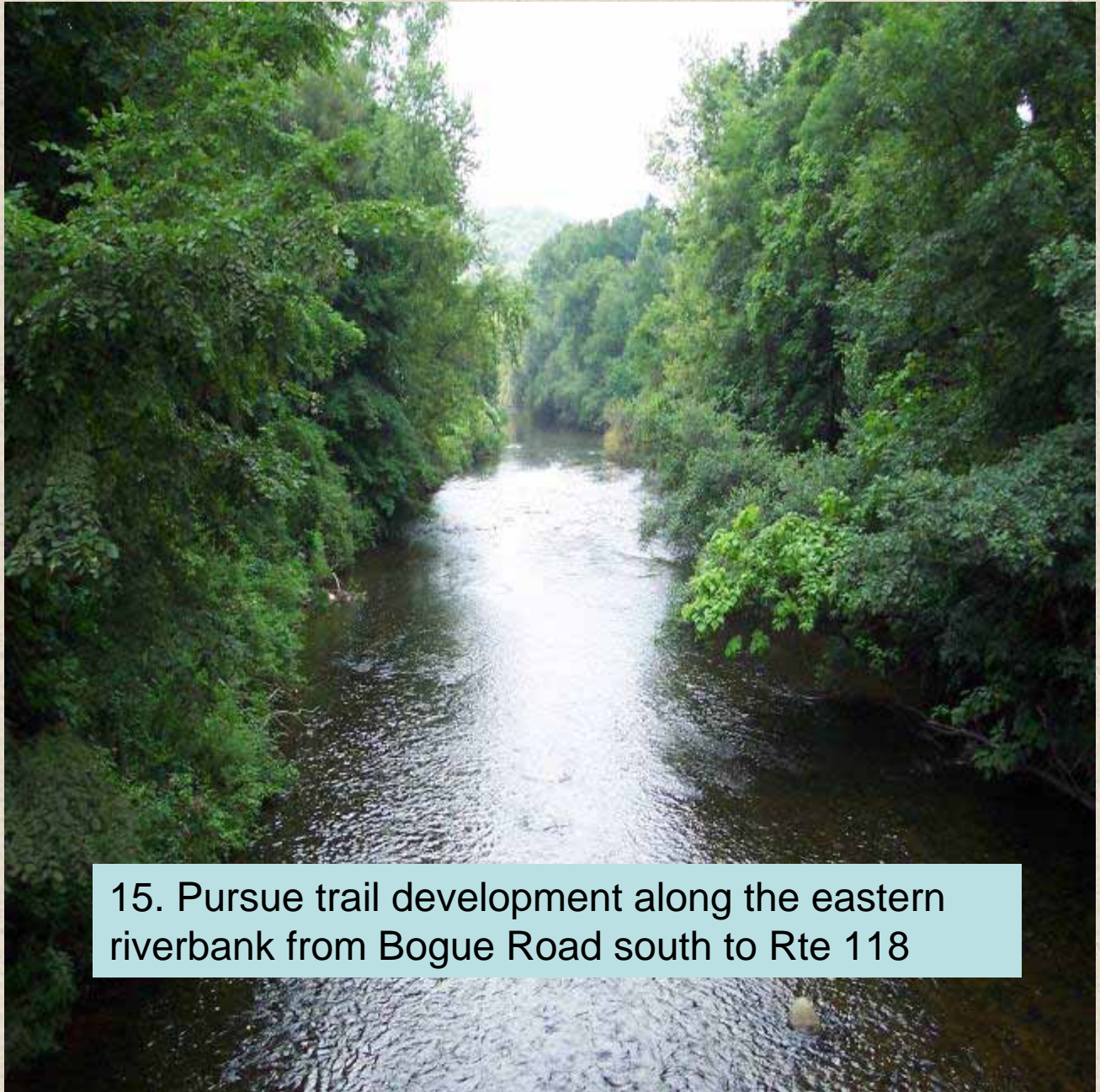
14. Pursue extending the existing footpath south of the John Toro Recreation Areas to Bogue Road

Naugatuck River Greenway Study



TRAIL PLAN Section Three - B





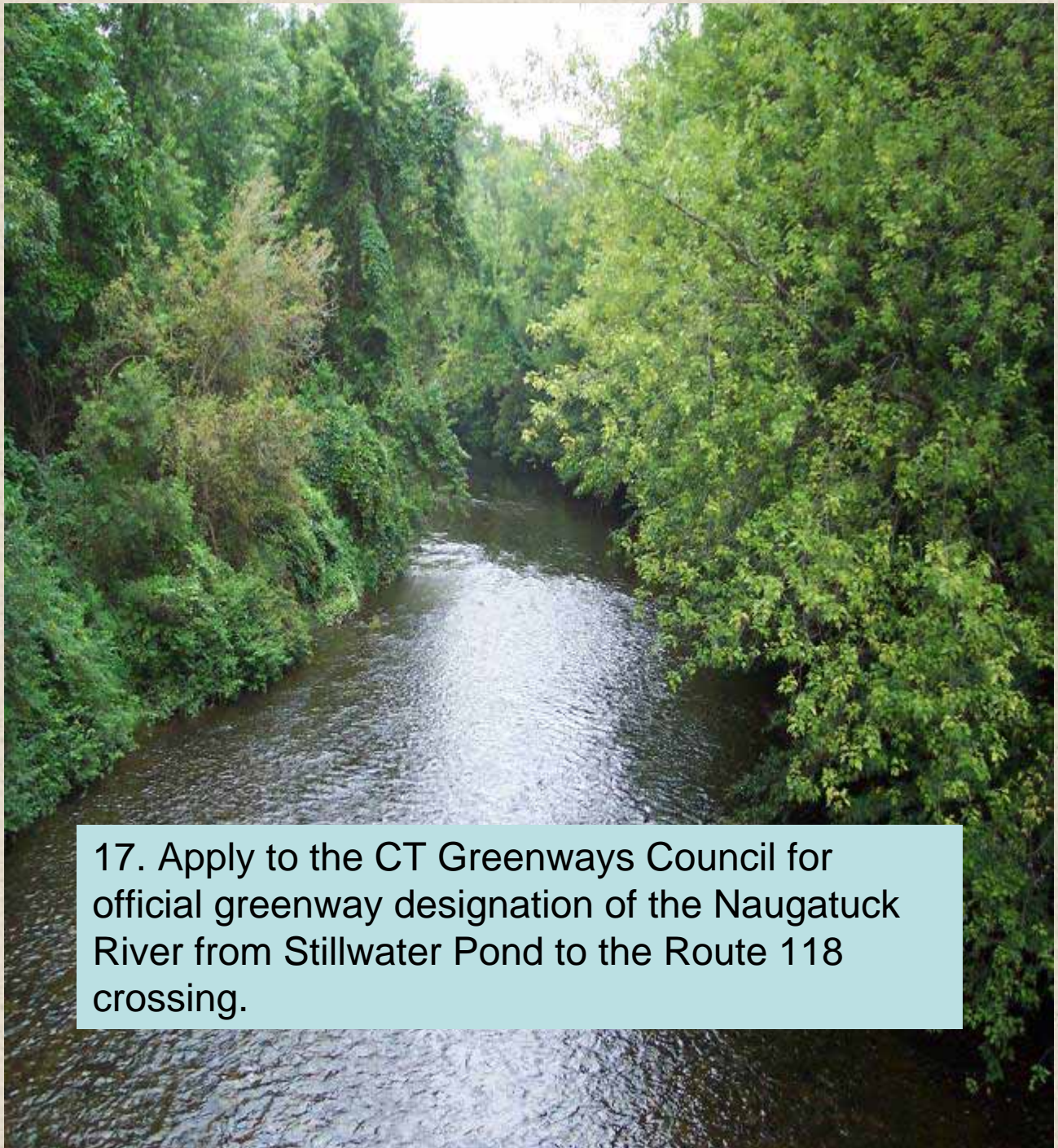
15. Pursue trail development along the eastern riverbank from Bogue Road south to Rte 118



16. Pursue opportunities to enhance trail use by installing a trail-side system of historical markers. This picture is an example of historic markers along the Chadakoin River in Jamestown, New York.

Historic landmark in vicinity of proposed
Rte 4 pocket park in Torrington





17. Apply to the CT Greenways Council for official greenway designation of the Naugatuck River from Stillwater Pond to the Route 118 crossing.

Why Establish Trails and Greenways?

According to the CT Department of Environmental Protection, trails and greenways offer many benefits including:

- Making communities better places to live by preserving and creating open spaces;
- Encouraging physical fitness and healthy lifestyles;
- Creating opportunities for outdoor recreation and non-motorized transportation;
- Strengthening local economies;
- Protecting the environment; and
- Preserving culturally and historically valuable areas.

Comments or questions on Naugatuck River Greenway Assessment?

Please contact:

Rick Lynn, Planning Director

Litchfield Hills Council of Elected Officials

(860) 491-9884

LHCEO1@snet.net