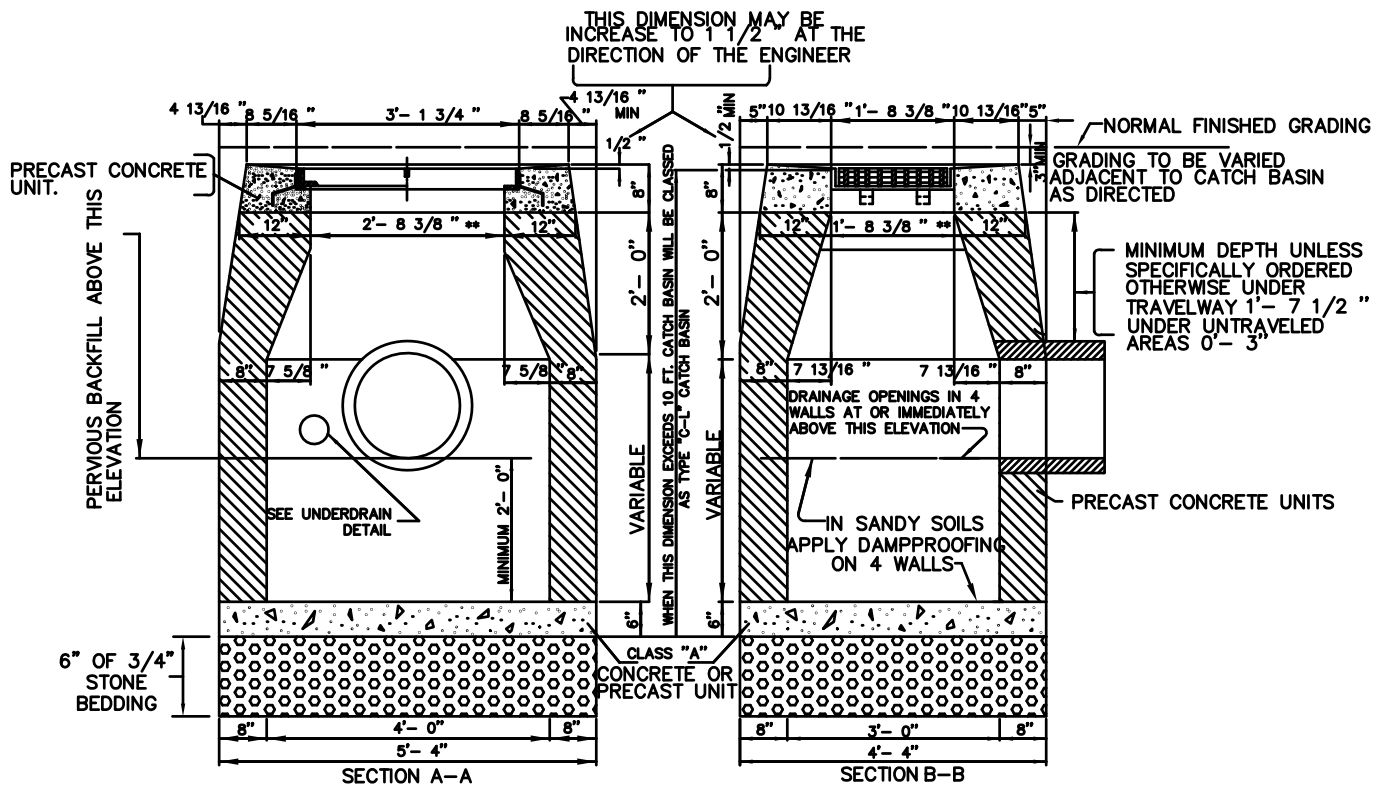


PLAN
TYPE "C-L" CATCH BASIN

NOTES

1. WALLS OF ALL CATCH BASIN OVER 10 FT DEEP TO BE INCREASED TO 12" THICKNESS. INSIDE DIMENSIONS TO REMAIN THE SAME.
2. PRECAST CONCRETE TOP SHALL BE APPROVED BY THE ENGINEER BEFORE INSTALLATION.
3. CATCH BASIN SUMPS SHALL BE OMITTED IF DIRECTED BY THE ENGINEER.
4. PROVIDE 4" PVC PERFORATED WEEP PIPE TO RELIEVE THE GROUNDWATER FROM THE PIPE BEDDING. PLACE AT ALL LOCATIONS WHERE PIPE ENTERS OR EXITS THE STRUCTURE.
5. ALL GRATES SHALL BE TYPE "A" GALVANIZED GRATES.
6. CB TOP BE SET ON MIN. OF 2" TO MAX. 4" OF MASONRY FOR ADJ.



TYPE "C-L" CATCH BASIN

SCALE N.T.S.	CITY OF TORRINGTON Engineering Department
APPROVED	
RV. DATE	TYPE "C-L" CATCH BASIN
JAN. 2002	
DEC. 2004	
AUG. 2011	