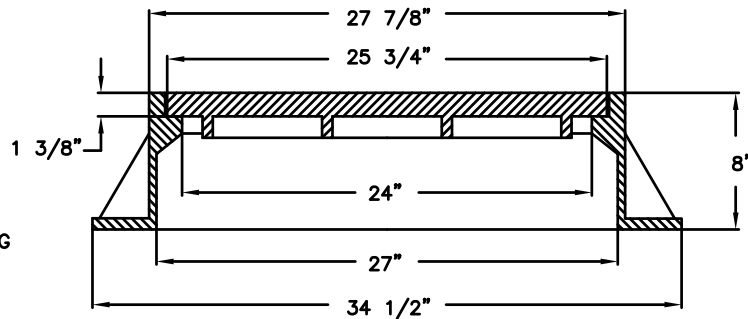
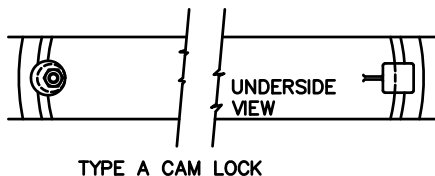
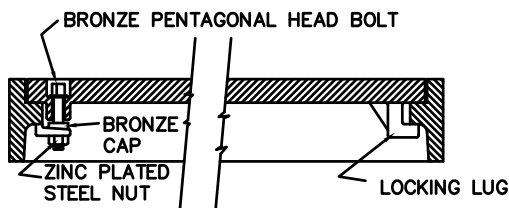
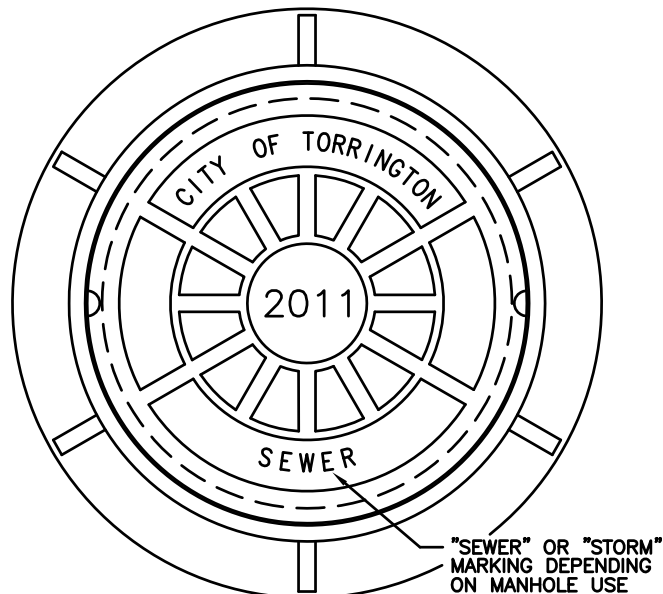


NON-PENETRATING/WATERTIGHT PICK HOLES  
PROVIDE TWO (2) PICK HOLES PER COVER



**NOTES:**

1. MANHOLE FRAME EQUAL TO CAMPBELL FOUNDRY PATTERN NO. 1009.
2. MANHOLE COVER EQUAL TO CAMPBELL FOUNDRY PATTERN NO. 1203.
3. BEARING SURFACE (COVER TO FRAME) TO BE MACHINED FOR FIT.
4. MATERIAL TO BE GRAY CAST IRON. ASTM A48-83, CLASS 30B
5. CASTINGS TO MEET AASHTO HS-20-44 (M818) HIGHWAY LOADINGS.
6. ALL TEXT SHOWN ON COVER TO BE 1 1/2" HIGH, DATE IN CENTER TO BE YEAR COVER INSTALLED.
7. COVER IN OFF STREET RIGHTS OF WAY SHALL HAVE TYPE A CAMLOCK PROVISIONS.

## SANITARY & STORM SEWER MANHOLE FRAME AND COVER

SCALE - NONE

SCALE N.T.S.	CITY OF TORRINGTON Engineering Department
APPROVED	
RV. DATE	STANDARD MANHOLE FRAME & COVER
JAN. 2002	
JUL. 2010	
AUG. 2011	