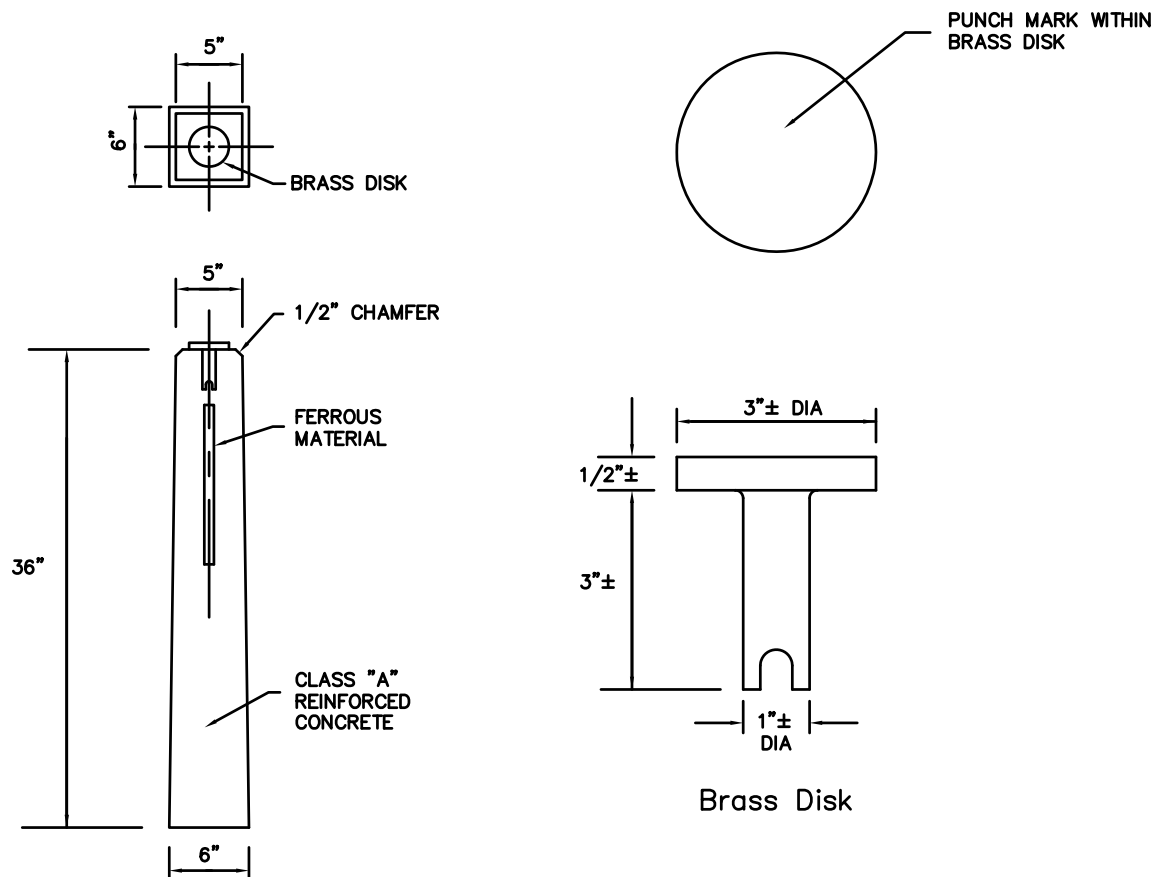


CONCRETE MONUMENT

CONCRETE MONUMENTS SHALL BE SET, LEVEL WITH FINISHED GRADE, ON ALL STREET LINES AT ALL ANGLE POINTS AND POINTS OF CURVATURE OR AT OTHER POINTS AS DIRECTED BY THE CITY ENGINEER. CONCRETE MONUMENTS SHALL BE OF REINFORCED CONCRETE, NOT LESS THAN THREE (3) FEET IN LENGTH, TOPS NOT LESS THAN FIVE (5) INCHES SQUARE WITH A BRASS CENTER POINT, SIDES TO TAPER TO A BASE NOT LESS THAN SIX (6) INCHES SQUARE.



SCALE N.T.S.	CITY OF TORRINGTON Engineering Department
APPROVED E.J.F	
RV. DATE	CONCRETE MONUMENT
JAN. 2002	
AUG. 2011	