

City of Torrington

ENGINEERING DEPARTMENT
(860) 489-2234



140 Main Street • City Hall
Torrington, CT 06790-5245
Fax: (860) 489-2550

ADDENDUM No. 1

DATE ISSUED: APRIL 14, 2022

RE: CITY SOUTH RECONSTRUCTION PHASE 2022.1

BID # CSR 027-042022

All bidders are hereby advised of the following amendments to the Contract Bid Documents, which are hereby made an integral part of the specifications for the subject project, prepared by The City of Torrington, to the same extent as all other documents. All work shall conform to the standards and provisions of same.

Bids submitted shall be deemed to include the Contract Document information as shown in Addendum No. 1. General bidders shall notify sub-bidders that may be affected by this addendum as applicable. Bidders shall be required to acknowledge receipt of this Addendum in the space provided on the Bid Proposal Form, Page BP-1. Failure to acknowledge this Addendum by the Bidder may result in the rejection of their bid. Bidders are directed to review changes to all portions of the work as changes to one portion may affect the work of another.

1. **Please remove sheet C-501.**
2. **Replace pages IFB-1 through IFB-6 of Information to Bidders with the attached revised pages IFB-1 through IFB-6 Information to Bidders noted as "Revised for Addendum #1, 4/14/2022". The following changes are highlighted:**
 - **Item 0686241 24" HDPE Storm Pipe Complete is to be deleted**
 - **Item 0651304 18" HDPE Storm Sewer Pipe is to be added to the bid items**
 - **Item 0821161A 6" Concrete Curb is to be deleted**
 - **Item 0811105A 4 ½" Mountable Concrete Curb is to be added to the bid items**
 - **Item 0811105B 4 ½" Mountable Concrete Curb – Commercial is to be added to the bid items**
3. **Replace Technical Specification pages Item 0811001A with attached Item 0811105A & B**
4. **Remove sheet 5.01**
5. **Remove and replace the following pages from the plan set the revisions dated 4/13/2022:**
 - **C-004: City South End – Scoville Street**
 - **C-006: City South End – Palmer Bridge St.**
 - **C-007: City South End – Scoville & Palmer, Sign and Painted Markings Plan**
6. **Question received by email April 6, 2022, 10:24 a.m.**
 - *Bid Item # 0406999A Asphalt Adjustment Cost has an "Estimated" Quantity of 1. This item is usually inclusive of a given value for the estimated amount. Please provide dollar value for bid item,*

Please see the revised bid items referenced under #2 above.

7. Questions received by email April 7, 2022, 1:25 p.m.

- *Typical Section on Sheet SD-1 indicates the contractor is placing 1.5" HMA 0.375 for the surface course. Please provide a pay item for the HMA S0.375.*

Detail 1.1 on Sheet SD-1 shall be revised to indicate 1.5" HMA S0.50 for the surface course.

- *Please provide an item for the backfill of the curbs and the topsoiling of shoulders.*

Refer to the technical specifications for curbing and sidewalk items. The installation of topsoil is included in the item 0950005A – Turf Establishment

- *How long is traffic allowed to travel on the exposed subgrade?*

The grade of the road is to be reestablished to a processed gravel surface to allow for two way traffic at the end of each work day.

- *Is it your intent to install all of the new drainage prior to the removal of the existing pavement?*

The means and methods for schedule of construction will be up to the contractor.

- *If the drainage work is performed prior to the milling, how is the contractor paid for the temporary asphalt patch ??*

The means and methods for schedule of construction will be up to the contractor.

- *Please provide details for the 3 catch basin structures to be replaced on Linden Street.*

See page SD-4 for drainage details

- *How is the Infiltration Trench on South Chapel Street paid?*

Use item 0651913A

8. Questions received by email April 7, 2022, 1:51 p.m.

- *Is the stone backfill shown on the drainage details included in the price of the HDPE items?*

Correct. Backfill is included in the individual items.

- *Is it the intent to build the project to proposed elevations? If so how does the contractor get paid for any cut or fill after the existing pavement and subbase are milled out?*

Use Item 0304002A for any additional material needed for fill. Removal of material will be included in item 0406272B.

- *Please include a Formation of Subgrade pay item.*

Use item 0304002A.

- *Will the engineer provide horizontal and vertical control and baseline coordinates?*

The successful bidder will be provided with the control in AutoCAD.

- *Please provide a detail for temporary ramps to existing driveways while the road excavation is performed.*

The means and methods for providing access will be up to the contractor.

- *Who performs compaction testing and Quality Assurance?*

Refer to the Technical Specifications Section 04.06.

9. Questions received at the pre-bid meeting.

- *Is there any dirty dirt?*

The City is not aware of any impacted soils within the specified work areas.

- *Are there any boring logs?*

Borings have not been conducted.

BID #CSR 027-042022 CITY SOUTH RECONSTRUCTION PHASE 2022.1

END OF ADDENDUM No. 1

BID FORM - EXHIBIT "A"

March 30, 2022

City South Reconstruction Project 2022.1

| ITEM NO# | ITEM DESCRIPTION | ESTIMATED QUANTITY | UNIT PRICE | TOTAL AMOUNT |
|-----------------|---|--------------------|------------|--------------|
| 0105180A | Utility Conflict Resolution | | | |
| | for the price per Each of | 10 | | |
| | _____ Dollars | | _____ | _____ |
| | _____ Cents | | | |
| 0201001A | Clearing and Grubbing | | | |
| | for the price per Lump Sum of | 1 | | |
| | _____ Dollars | | _____ | _____ |
| | _____ Cents | | | |
| 0201214A | Existing traffic and parking signs removed and reinstalled | | | |
| | for the price per Each of | 29 | | |
| | _____ Dollars | | _____ | _____ |
| | _____ Cents | | | |
| 0202000A | Earth Excavation | | | |
| | for the price per Cubic Yard of | 307 | | |
| | _____ Dollars | | _____ | _____ |
| | _____ Cents | | | |
| 0202452A | Test Pit | | | |
| | for the price per Each of | 3 | | |
| | _____ Dollars | | _____ | _____ |
| | _____ Cents | | | |
| 0202529 | Cut Bituminous Concrete Pavement | | | |
| | for the price per Linear foot of | 1,445 | | |
| | _____ Dollars | | _____ | _____ |
| | _____ Cents | | | |
| 0212001A | Subbase | | | |
| | for the price per Cubic Yard of | 200 | | |
| | _____ Dollars | | _____ | _____ |
| | _____ Cents | | | |

| ITEM NO# | ITEM DESCRIPTION | ESTIMATED QUANTITY | UNIT PRICE | TOTAL AMOUNT |
|-----------------|--|--------------------|--------------------|--------------------|
| 0304002A | Processed Aggregate Base | | | |
| | for the price per Cubic Yard of | 1,439 | | |
| | _____ Dollars | | _____ | _____ |
| | _____ Cents | | | |
| 0406236A | Material for Tack Coat | | | |
| | for the price per Gallon of | 643 | | |
| | _____ Dollars | | _____ | _____ |
| | _____ Cents | | | |
| 0406272A | Milling of Existing HMA [0" - 8"] | | | |
| | for the price per Square Yard of | 10,720 | | |
| | _____ Dollars | | _____ | _____ |
| | _____ Cents | | | |
| 0406272B | Milling of Existing HMA [8" - 12"] | | | |
| | for the price per Square Yard of | 2,144 | | |
| | _____ Dollars | | _____ | _____ |
| | _____ Cents | | | |
| 0406442A | Bituminous Concrete (HMA S 0.50) Super Pave | | | |
| | for the price per Ton of | 2,474 | | |
| | _____ Dollars | | _____ | _____ |
| | _____ Cents | | | |
| 0406999A | Asphalt Adjustment Cost | | | |
| | for the price per Estimated of | 1 | | |
| | _____ Dollars | | <u>\$10,000.00</u> | <u>\$10,000.00</u> |
| | _____ Cents | | | |
| 0507001A | Type C or CL Catch Basin Top (Supply Only) | | | |
| | for the price per Each of | 16 | | |
| | _____ Dollars | | _____ | _____ |
| | _____ Cents | | | |

| ITEM NO# | ITEM DESCRIPTION | ESTIMATED QUANTITY | UNIT PRICE | TOTAL AMOUNT |
|-----------------|--|--------------------|------------|--------------|
| 0507701A | Reset Catch Basin Top, Type C or CL | | | |
| | for the price per Each of | 16 | | |
| | _____ Dollars | | _____ | _____ |
| | _____ Cents | | | |
| 0586040 | New Catch Basin Structure with Top (0'-8') | | | |
| | for the price per Each of | 11 | | |
| | _____ Dollars | | _____ | _____ |
| | _____ Cents | | | |
| 0586650A | Reset Manhole (Storm Sewer) Frame & Cover | | | |
| | for the price per Each of | 10 | | |
| | _____ Dollars | | _____ | _____ |
| | _____ Cents | | | |
| 0586650A | Reset Manhole (Sanitary Sewer) Frame & Cover | | | |
| | for the price per Each of | 15 | | |
| | _____ Dollars | | _____ | _____ |
| | _____ Cents | | | |
| 0586703 | Convert Existing Catch Basin Top to MH Frame/Cover | | | |
| | for the price per Each of | 1 | | |
| | _____ Dollars | | _____ | _____ |
| | _____ Cents | | | |
| 0586705A | Repair Existing Catch Basin or Manhole (up to 1 cu.ft.) | | | |
| | for the price per Each of | 1 | | |
| | _____ Dollars | | _____ | _____ |
| | _____ Cents | | | |
| 0651304 | 18" HDPE Storm Sewer Pipe | | | |
| | for the price per Linear foot of | 100 | | |
| | _____ Dollars | | _____ | _____ |
| | _____ Cents | | | |

| ITEM NO# | ITEM DESCRIPTION | ESTIMATED QUANTITY | UNIT PRICE | TOTAL AMOUNT |
|-----------------|---|--------------------|------------|--------------|
| 0651885A | 12" HDPE Storm Sewer Pipe | | | |
| | for the price per Linear foot of | 825 | | |
| | _____ Dollars | | _____ | _____ |
| | _____ Cents | | | |
| 0651913A | 6" Underdrain | | | |
| | for the price per Linear foot of | 150 | | |
| | _____ Dollars | | _____ | _____ |
| | _____ Cents | | | |
| 0811105A | 4 1/2" Mountable Concrete Curbing | | | |
| | for the price per Each of | 5,800 | | |
| | _____ Dollars | | _____ | _____ |
| | _____ Cents | | | |
| 0811105B | 4 1/2" Mountable Concrete Curbing - Commercial | | | |
| | for the price per Linear foot of | 670 | | |
| | _____ Dollars | | _____ | _____ |
| | _____ Cents | | | |
| 0815001A | 6" Bituminous Concrete Curbing | | | |
| | for the price per Linear foot of | 360 | | |
| | _____ Dollars | | _____ | _____ |
| | _____ Cents | | | |
| 0921005A | Concrete Sidewalk Ramps | | | |
| | for the price per Square Foot of | 1,400 | | |
| | _____ Dollars | | _____ | _____ |
| | _____ Cents | | | |
| 0921039A | Detectable Warning Pad | | | |
| | for the price per Square Foot of | 280 | | |
| | _____ Dollars | | _____ | _____ |
| | _____ Cents | | | |

| ITEM NO# | ITEM DESCRIPTION | ESTIMATED QUANTITY | UNIT PRICE | TOTAL AMOUNT |
|-----------------|---|--------------------|--------------------|--------------------|
| 0922001A | Bituminous Concrete Sidewalk and Driveways | | | |
| | for the price per Square Foot of | 14,635 | | |
| | _____ Dollars | | _____ | _____ |
| | _____ Cents | | | |
| 0950005A | Turf Establishment | | | |
| | for the price per Square Yard of | 1,077 | | |
| | _____ Dollars | | _____ | _____ |
| | _____ Cents | | | |
| 0970006A | Traffic Person (Municipal Police Officer) | | | |
| | for the price per Estimated of | 1 | | |
| | _____ Dollars | | <u>\$41,000.00</u> | <u>\$41,000.00</u> |
| | _____ Cents | | | |
| 0970007A | Traffic Person (Uniformed Flagger) | | | |
| | for the price per Hour of | 640 | | |
| | _____ Dollars | | _____ | _____ |
| | _____ Cents | | | |
| 0971001A | Maintenance and Protection of Traffic | | | |
| | for the price per Lump Sum of | 1 | | |
| | _____ Dollars | | _____ | _____ |
| | _____ Cents | | | |
| 0975001A | Mobilization and Demobilization | | | |
| | for the price per Lump Sum of | 1 | | |
| | _____ Dollars | | _____ | _____ |
| | _____ Cents | | | |
| 0980001A | Construction Staking | | | |
| | for the price per Lump Sum of | 1 | | |
| | _____ Dollars | | _____ | _____ |
| | _____ Cents | | | |

| ITEM NO# | ITEM DESCRIPTION | ESTIMATED QUANTITY | UNIT PRICE | TOTAL AMOUNT |
|-----------------|---|--------------------|------------|--------------|
| 1117111A | Rectangular Rapid Flashing Beacon (RRFB) - solar | | | |
| | for the price per Each of | 2 | | |
| | _____ Dollars | | _____ | _____ |
| | _____ Cents | | | |
| 1206023 | Removal and Relocation of Existing Signs | | | |
| | for the price per Each of | 23 | | |
| | _____ Dollars | | _____ | _____ |
| | _____ Cents | | | |
| 1208928A | Sign Face - Sheet Aluminum (Type IV Reflective Sheeting) | | | |
| | for the price per Square Foot of | 6 | | |
| | _____ Dollars | | _____ | _____ |
| | _____ Cents | | | |
| 1209114A | 4" White/Yellow Hot Applied Painted Pavement Markings | | | |
| | for the price per Linear foot of | 1,300 | | |
| | _____ Dollars | | _____ | _____ |
| | _____ Cents | | | |
| 1209131A | Hot Applied Markings, Symbols & Legends | | | |
| | for the price per Square Foot of | 1,377 | | |
| | _____ Dollars | | _____ | _____ |
| | _____ Cents | | | |

TOTAL BID AMOUNT: \$ _____

ITEM No. 0811105A & B — EXTRUDED CONCRETE CURBING

Description

This item shall consist of extruded (Portland cement) concrete curbing constructed in accordance with the dimensions and details shown on the plans or as ordered and in conformity with these specifications.

Materials

The materials used in the concrete for machine-extruded concrete curb will meet the following requirements:

The concrete shall be designed to include approximately 75% State approved concrete sand and 25% 3/5" rock. The concrete shall contain a minimum of 620 pounds of cement (6.5 sacks) per cubic yard, yielding concrete that will exceed 4,000 PSI in 28 days. The concrete shall be produced according to ASTM C94 Ready Mixed Concrete or ASTM C685 Concrete produced by volumetric continuous mixing. The concrete shall contain a minimum of one pound of fiber reinforcement per cubic yard. A sample and the manufacturer's specifications shall be submitted for approval. Concrete mixture shall be submitted to Public Works Engineering for approval

Adhesive will be Sika Latix, Laricrete 40, Concessive Paste LPL or other approved equal.

Liquid membrane curing compounds shall meet the requirements of AASHTO M148 except that when tested in the water retention test described in AASHTO T155, the curing compound shall restrict the loss of water present in the test specimen at the time of application of the compound to not more than 0.03 grams per square centimeter of surface.

The curing compound shall be Type 1, clear or translucent, to which a fugitive dye has been added. Curing compounds containing wax shall not be used. Curing compound shall be delivered in the manufacturer's original clean, sealed containers. Each container shall be legibly marked with the name of the manufacturer, the name of the compound, the type of compound, the manufacturer's batch number, the date of manufacture, and the manufacturer's recommended shelf life. Curing compound which has been in storage for more than one year from the date of manufacture or more than the manufacturer's recommended shelf life, whichever is less, shall not be used. A sample and the manufacturer's specifications shall be submitted for approval.

Construction Methods

Curbing will be formed by equipment specifically manufactured for the installation of extruded concrete curbing, and the minimum height of the curb is to be 6 inches for regular curb, 4 inches for Cape Cod curbing.

The surface of the pavement or base will be prepared in accordance with the manufacturer's recommendations.

Prior to placing the curbing, an approved concrete to asphalt adhesive or a two-component epoxy adhesive specifically manufactured for bonding concrete to asphalt and/or concrete will be applied; manufacturer's instructions must be followed.

Control joints shall be installed at nine-foot intervals and more often on radii, to minimize shrinkage cracking.

Freshly extruded curb will be lightly touched up with a steel hand trowel.

The finished curb will be coated with a curing compound, which has been designed to seal the surface and form a water proofing membrane.

Method of Measurement

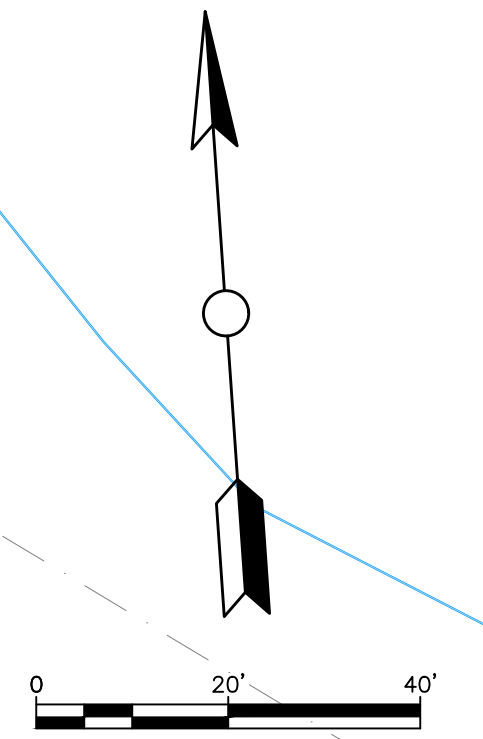
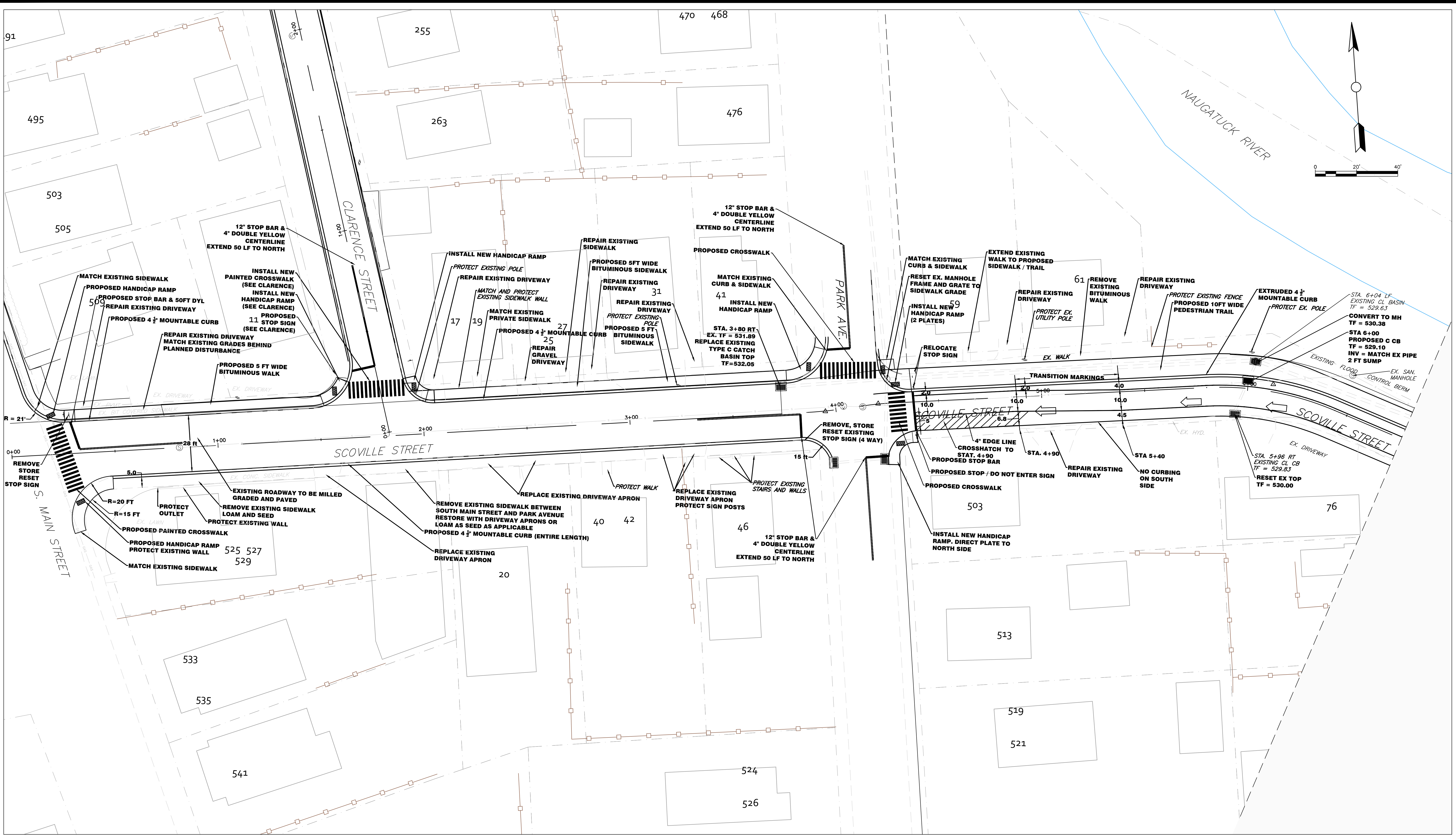
This work will be measured for payment at the contract unit price along the curb and will be the actual number of linear feet of concrete curbing completed and accepted.

Basis of Payment

Payment for this work will be made at the contract unit price per linear foot for "Extruded Concrete Curbing" of the type specified, complete in place, which price shall include all materials, equipment, tools, and labor incidental thereto; also all excavation, backfilling, disposal of surplus material and drainage openings.

Revised 4/13/22

ITEM 0811105A & B



GENERAL NOTES

ALL MANHOLES TO RECEIVE NEW FRAMES & COVERS
 CONTRACTOR TO ENSURE POSITIVE DRAINAGE
 THROUGHOUT PROJECT LIMITS

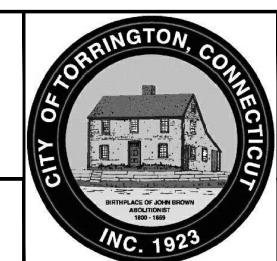
REVISIONS

| # | DATE | COMMENTS | BY |
|---|-----------|-------------|-----|
| 1 | 4/13/2022 | ADDENDUM #1 | MIA |
| 2 | | | |
| 3 | | | |
| 4 | | | |
| 5 | | | |
| 6 | | | |

Plan Showing
 Road Reconstruction
CITY SOUTH END - SCOVILLE STREET
 PLAN VIEW

City of Torrington Engineering Department

APRIL, 2022
 1" = 20'

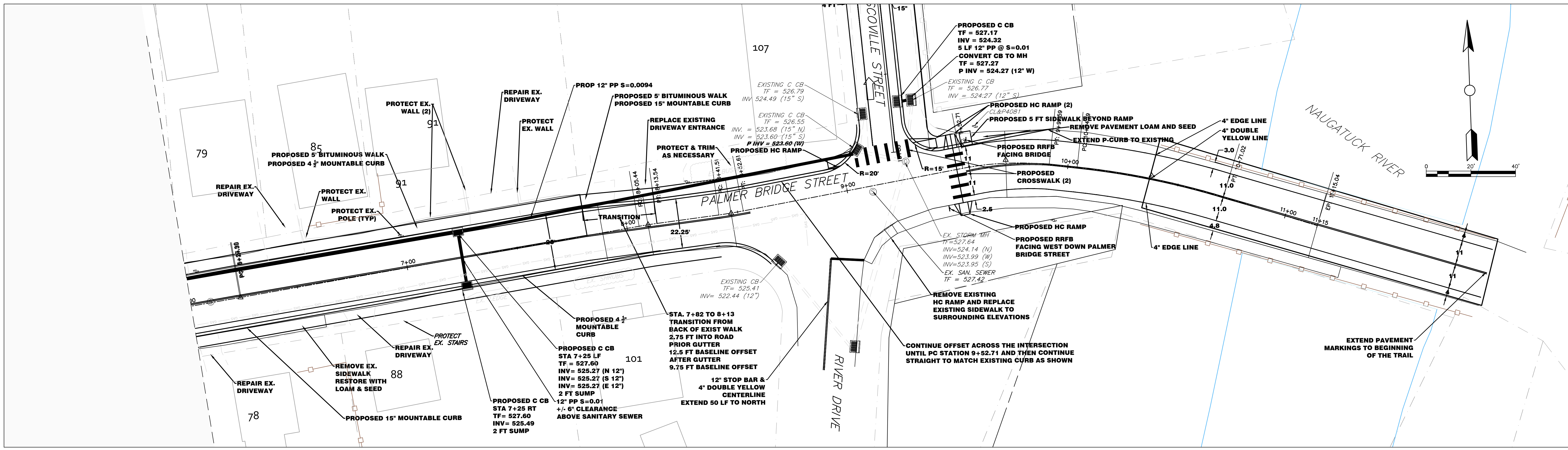
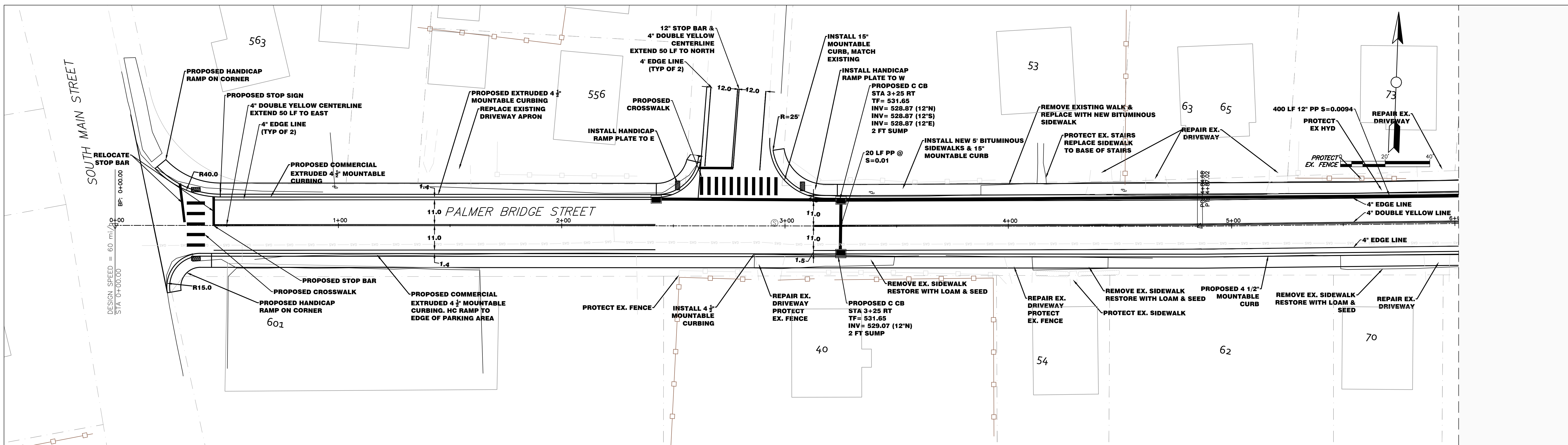


Drawn by: DFH
 Checked by: KJB

IMPORTANT NOTE:
 UNDERGROUND UTILITIES ARE APPROXIMATE
 PRIOR TO ANY EXCAVATION OR CONSTRUCTION CONTACT -
 "CALL BEFORE YOU DIG" 1-800-922-4455

SHEET: C-004

1 INCH



GENERAL NOTES
 ALL MANHOLES TO RECEIVE NEW FRAMES & COVERS
 CONTRACTOR TO ENSURE POSITIVE DRAINAGE
 THROUGHOUT PROJECT LIMITS

| REVISIONS | | | |
|-----------|-----------|-------------|-----|
| # | DATE | COMMENTS | BY |
| 1 | 4/13/2022 | ADDENDUM #1 | MIA |
| 2 | | | |
| 3 | | | |
| 4 | | | |
| 5 | | | |
| 6 | | | |

Plan Showing
 Road Reconstruction
CITY SOUTH END - PALMER BRIDGE ST.
 PLAN VIEW

City of Torrington Engineering Department

APRIL, 2022
 1" = 20'

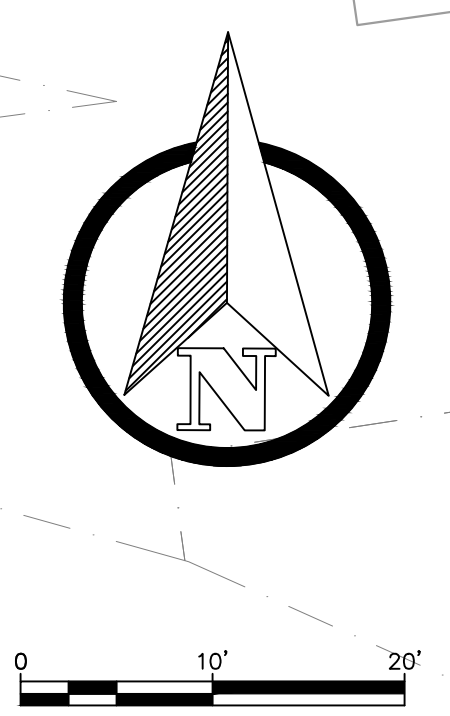
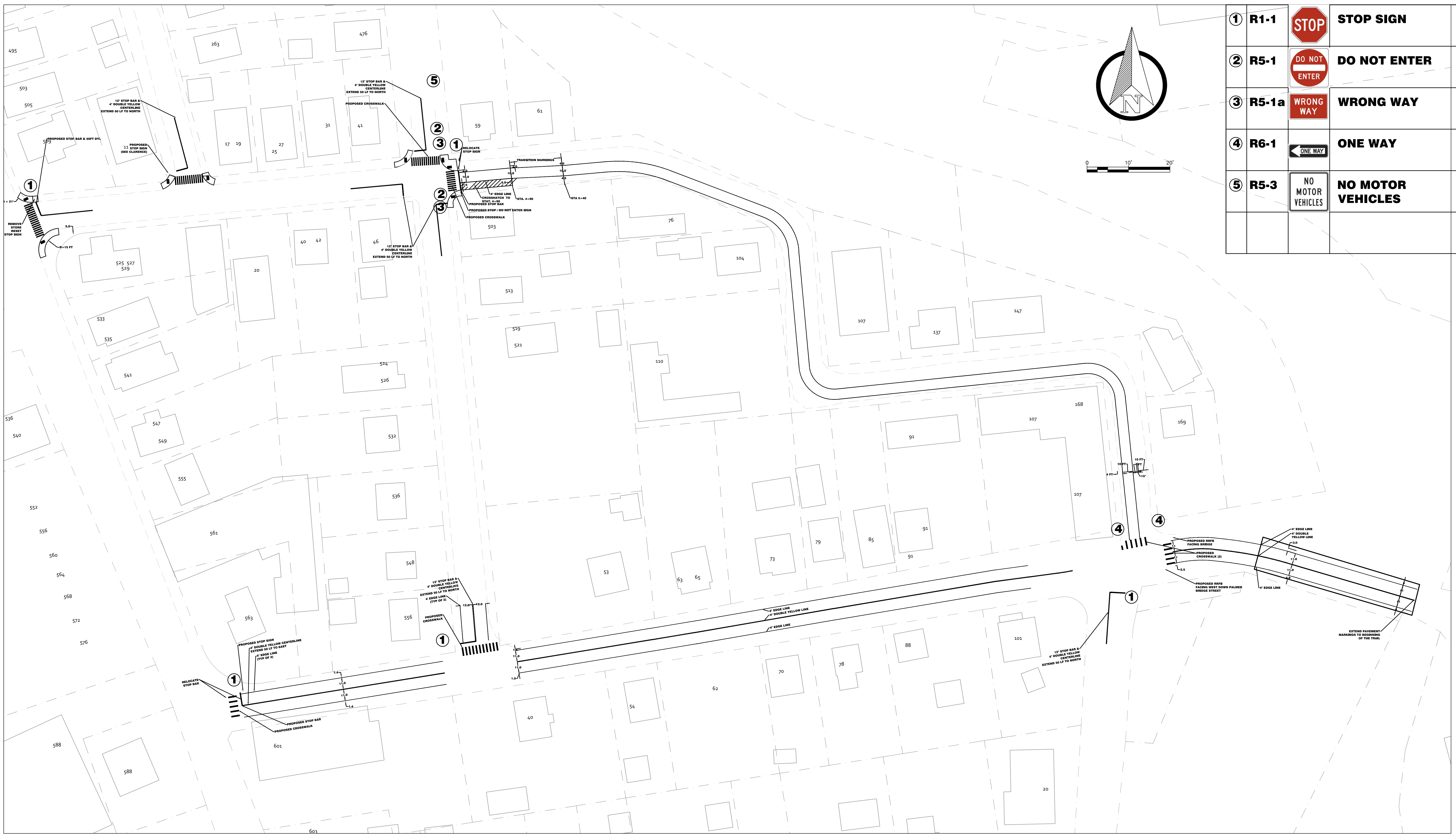
IMPORTANT NOTE:
 UNDERGROUND UTILITIES ARE APPROXIMATE
 PRIOR TO ANY EXCAVATION OR CONSTRUCTION CONTACT -
 "CALL BEFORE YOU DIG" 1-800-922-4455

City of Torrington
 INC. 1923

Drawn by: DFH
 Checked by: KJB

SHEET: C-006

1 INCH



| | | | |
|---|-------|--|--------------------------|
| ① | R1-1 | | STOP SIGN |
| ② | R5-1 | | DO NOT ENTER |
| ③ | R5-1a | | WRONG WAY |
| ④ | R6-1 | | ONE WAY |
| ⑤ | R5-3 | | NO MOTOR VEHICLES |

GENERAL NOTES
 ALL MANHOLES TO RECEIVE NEW FRAMES & COVERS
 CONTRACTOR TO ENSURE POSITIVE DRAINAGE
 THROUGHOUT PROJECT LIMITS

| REVISIONS | | | |
|-----------|-----------|-------------|-----|
| # | DATE | COMMENTS | BY |
| 1 | 4/13/2022 | ADDENDUM #1 | MIA |
| 2 | | | |
| 3 | | | |
| 4 | | | |
| 5 | | | |
| 6 | | | |

Plan Showing
 Road Reconstruction
CITY SOUTH END - SCOVILLE & PALMER
SIGN AND PAINTED MARKINGS PLAN

City of Torrington Engineering Department

APRIL, 2022
 1" = 40'

IMPORTANT NOTE:
 UNDERGROUND UTILITIES ARE APPROXIMATE
 PRIOR TO ANY EXCAVATION OR CONSTRUCTION CONTACT -
 "CALL BEFORE YOU DIG" 1-800-922-4455

Drawn by: DFH
 Checked by: KJB

SHEET: C-007

1 INCH