

City of Torrington

ENGINEERING DEPARTMENT
(860) 489-2234



140 Main Street • City Hall
Torrington, CT 06790-5245
Fax: (860) 489-2550

ADDENDUM No. 2

DATE ISSUED: October 29, 2018

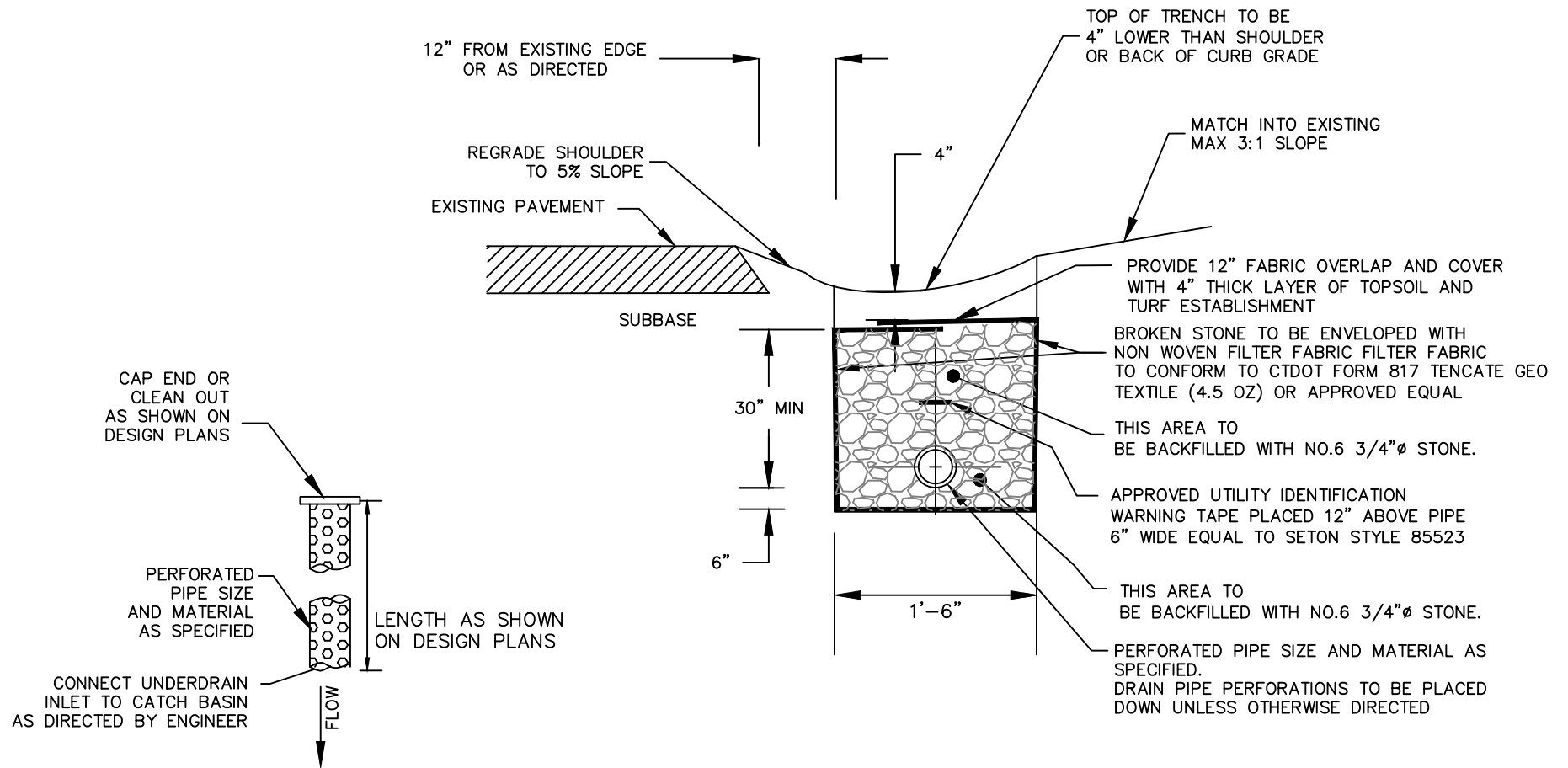
RE: STORM DRAINAGE IMPROVEMENTS ON PECK/RICHARD ROAD (BID # PRD-027-110118)

All bidders are hereby advised of the following amendments to the Contract Bid Documents, which are hereby made an integral part of the specifications for the subject project, prepared by The City of Torrington, to the same extent as all other documents. All work shall conform to the standards and provisions of same.

Bids submitted shall be deemed to include the Contract Document information as shown in Addendum No. 2. General bidders shall notify sub-bidders that may be affected by this addendum as applicable. Bidders shall be required to acknowledge receipt of this Addendum in the space provided on the Bid Proposal Form, Page C-10A. Failure to acknowledge this Addendum by the Bidder may result in the rejection of their bid. Bidders are directed to review changes to all portions of the work as changes to one portion may affect the work of another.

1. **Add Detail - Section 4.22 Underdrain in non-paved area**
2. **Add Detail - Section 4.24 Underdrain in paved areas**
3. **Add Detail – Section 4.4 Typical Storm Drainage Trench HDPE paved areas**
4. **Add Detail – Section 4.5 Typical Storm Drainage Trench HDPE non-paved areas**
5. **Add Detail – Section 4.1 Type “C” Catch Basin**
6. **Replace Plan “Richard/Peck Rd Intersection Drainage Improvement Locations” dated 7/19/2018 with revised Plan dated 10/26/2018**
7. **REPLACE THE FIRST PARAGRAPH OF INVITATION TO BID WITH THE FOLLOWING NEW PARAGRAPH: Sealed bids are invited and will be received by the City of Torrington, at the office of the City Purchasing Agent, City Hall, 140 Main Street, Torrington, Connecticut until 2:00 P.M., November 5, 2018 at which time and place they will be publicly opened and read aloud. In the event of the closure of City Hall, the bid will be opened on the following business day that City Hall is opened.**

END OF ADDENDUM No. 2

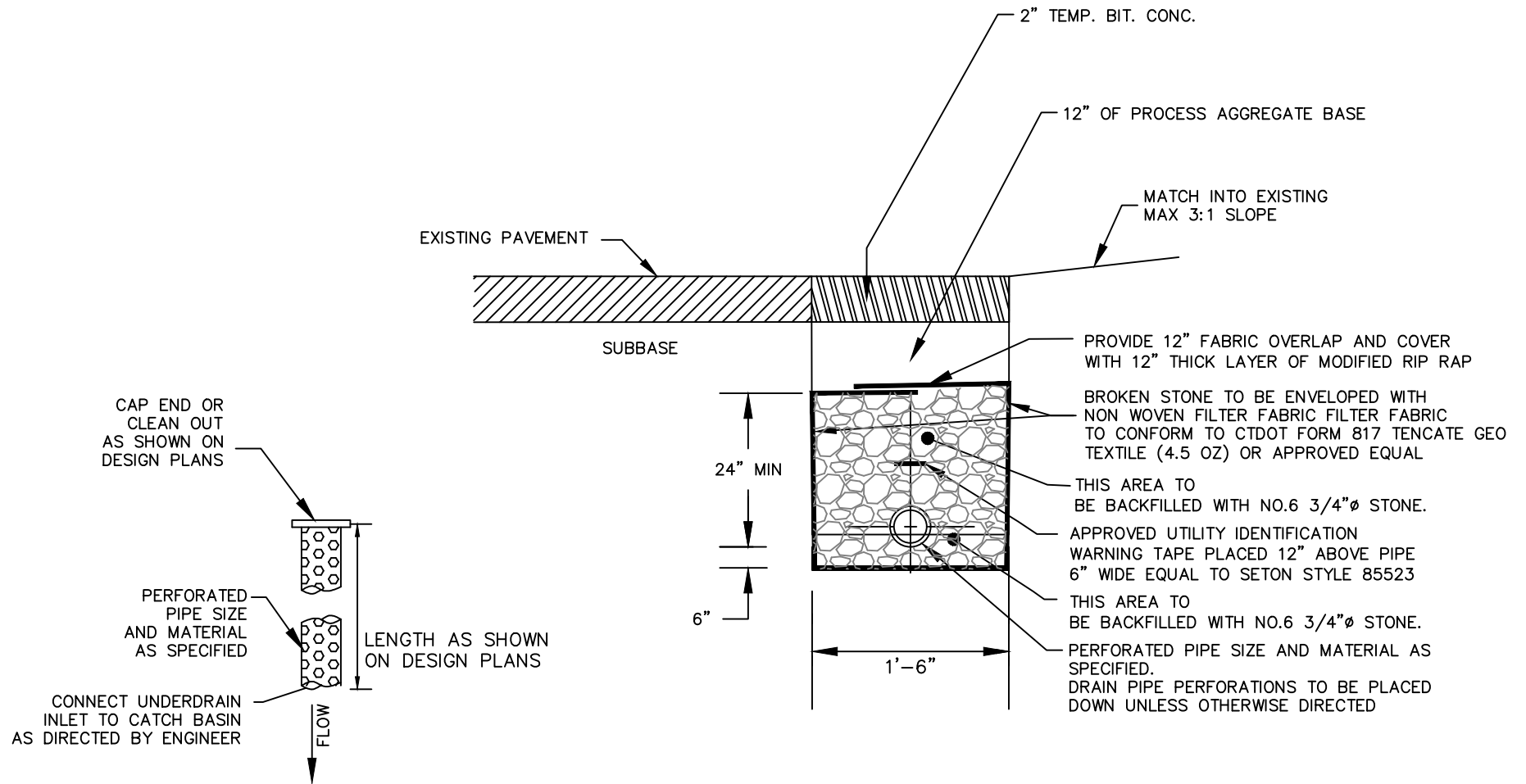


DIAMETER (INCHES)	LENGTH OF PIPE
4	0 TO 100'
6	100' OR MORE
8 & LARGER	AS DIRECTED

NOTES:

1. PIPE TO BE N-12 ST (SOILTIGHT) IB (INTEGRAL BELL) DUAL WALL PERFORATED HDPE.
2. PIPE DIAMETER IS BASED ON LENGTH:
 - 2.1. USE 4"Ø (FOUR INCH) FOR UP TO 100'
 - 2.2. USE 6"Ø (SIX) FOR LENGTHS OVER 100'
 - 2.3. USE 8"Ø OR LARGER AS DIRECTED
3. MINIMUM SLOPE 0.5%
4. CAP ENDS OF PIPE WITH APPROPRIATE FITTING END CAPS

SCALE N.T.S.	CITY OF TORRINGTON Engineering Department
APPROVED P.K. AUGUST 2018	
	SECTION 4.22
	UNDERDRAIN NON-PAVED AREAS

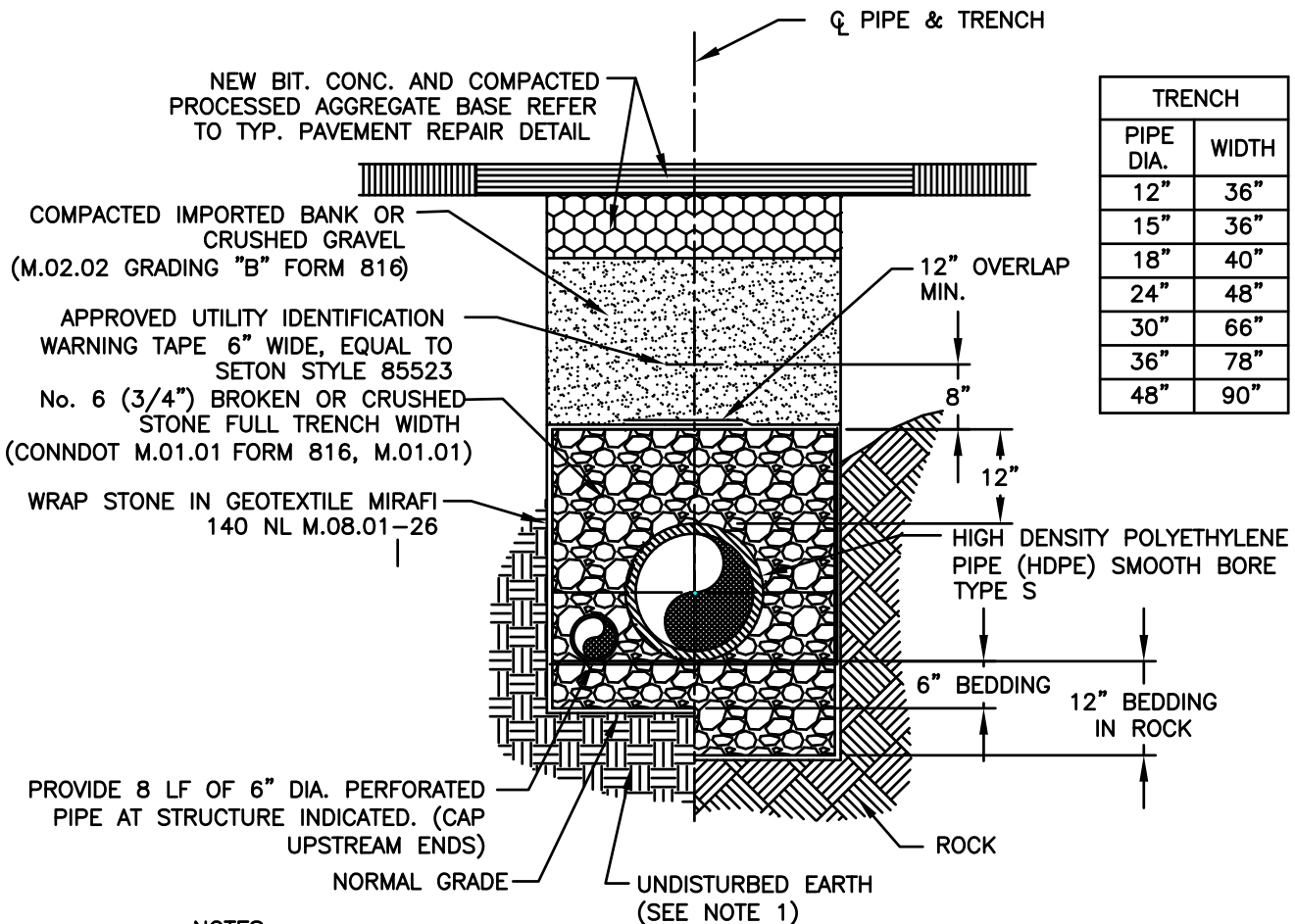


DIAMETER (INCHES)	LENGTH OF PIPE
4	0 TO 100'
6	100' OR MORE
8 & LARGER	AS DIRECTED

NOTES:

- PIPE TO BE N-12 ST (SOILTIGHT) IB (INTEGRAL BELL) DUAL WALL PERFORATED HDPE.
- PIPE DIAMETER IS BASED ON LENGTH:
 - USE 4"φ (FOUR INCH) FOR UP TO 100'
 - USE 6"φ (SIX) FOR LENGTHS OVER 100'
 - USE 8"φ OR LARGER AS DIRECTED
- MINIMUM SLOPE 0.5%
- CAP ENDS OF PIPE WITH APPROPRIATE FITTING END CAPS

SCALE N.T.S.	CITY OF TORRINGTON Engineering Department
APPROVED M.Z.	
AUGUST 2018	SECTION 4.24
	UNDERDRAIN PAVED AREAS



TRENCH	
PIPE DIA.	WIDTH
12"	36"
15"	36"
18"	40"
24"	48"
30"	66"
36"	78"
48"	90"

NOTES:

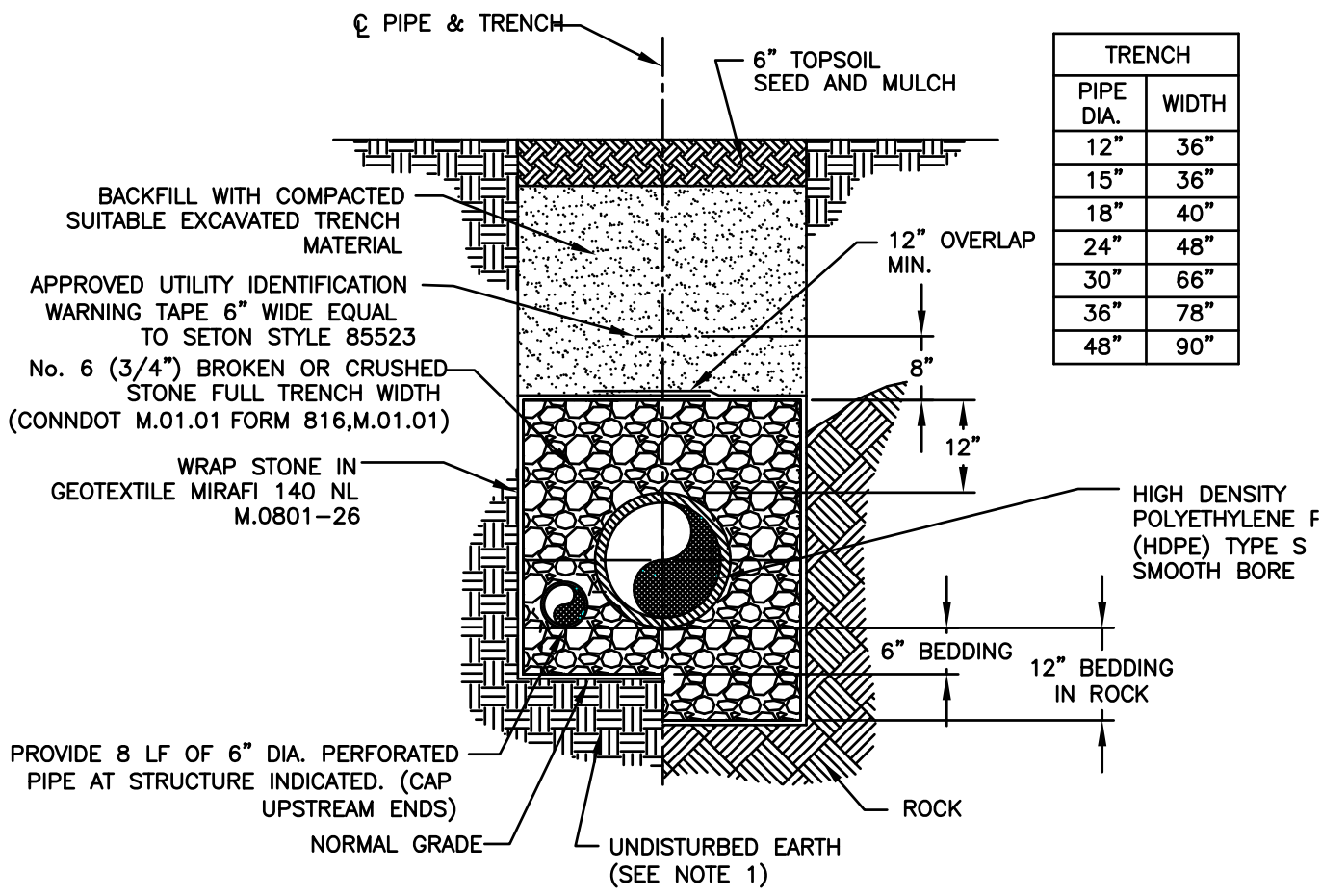
1. BEDDING SHALL BE No.6 (3/4") CRUSHED STONE (CONNDOT FORM 816 M.01.01)
2. UNSUITABLE MATERIAL BELOW NORMAL GRADE SHALL BE REPLACED WITH No.6(3/4") CRUSHED STONE (CONNDOT FORM 816, ART. M.01.01) AS DIRECTED BY THE CITY ENGINEER.
3. ALL WORK MUST BE CONDUCTED IN STRICT ACCORDANCE WITH THE LATEST REGULATIONS OF OCCUPATIONAL SAFETY AND HEALTH ADMINISTRATION (OSHA) FOR EXCAVATIONS.

TYPICAL STORM DRAINAGE TRENCH HDPE PAVED AREAS

NOT TO SCALE

Project Specific Note:
 Typical Pipe Invert Depth To Be
 4 Feet Below Finished Grade

SCALE N.T.S. APPROVED	CITY OF TORRINGTON Engineering Department
RV. DATE JAN. 2002 APR. 2009 AUG. 2011	TYPICAL STORM DRAINAGE TRENCH HDPE PAVED AREAS



TRENCH	
PIPE DIA.	WIDTH
12"	36"
15"	36"
18"	40"
24"	48"
30"	66"
36"	78"
48"	90"

- NOTES:**
1. BEDDING SHALL BE No.6 (3/4") CRUSHED STONE (DOT FORM 816 M.01.01)
 2. UNSUITABLE MATERIAL BELOW NORMAL GRADE SHALL BE REPLACED WITH No.6(3/4") CRUSHED STONE (CONNDOTFORM 816, ART. M.01.01) AS DIRECTED BY THE CITY ENGINEER.
 3. ALL WORK MUST BE CONDUCTED IN STRICT ACCORDANCE WITH THE LATEST REGULATIONS OF OCCUPATIONAL SAFETY AND HEALTH ADMINISTRATION (OSHA)FOR EXCAVATIONS.

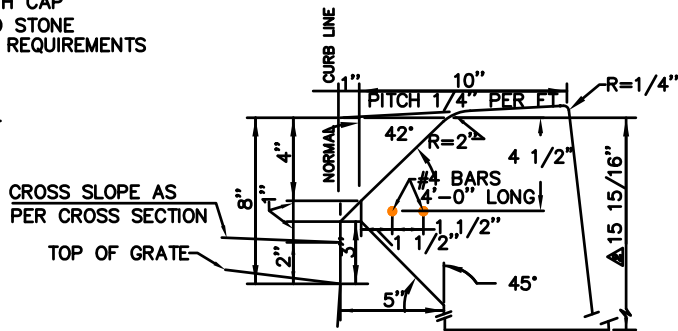
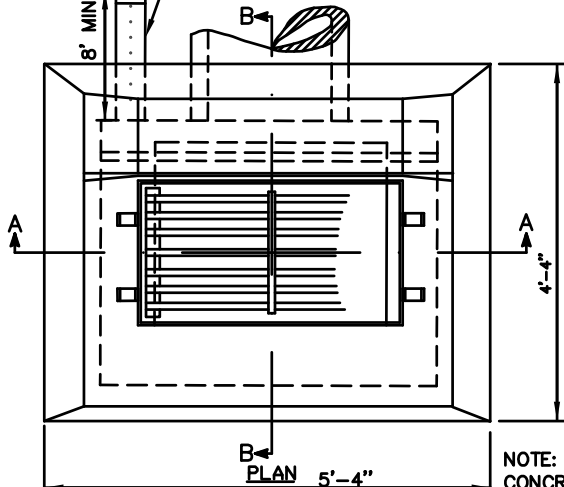
TYPICAL STORM DRAINAGE TRENCH HDPE NON-PAVED AREAS

NOT TO SCALE

Project Specific Note:
Typical Pipe Invert Depth To Be 4 Feet Below Finished Grade

SCALE N.T.S.	CITY OF TORRINGTON Engineering Department
APPROVED	
RV. DATE	TYPICAL STORM DRAINAGE TRENCH HDPE NON-PAVED AREAS
JAN. 2002	
APR. 2009	
AUG. 2011	

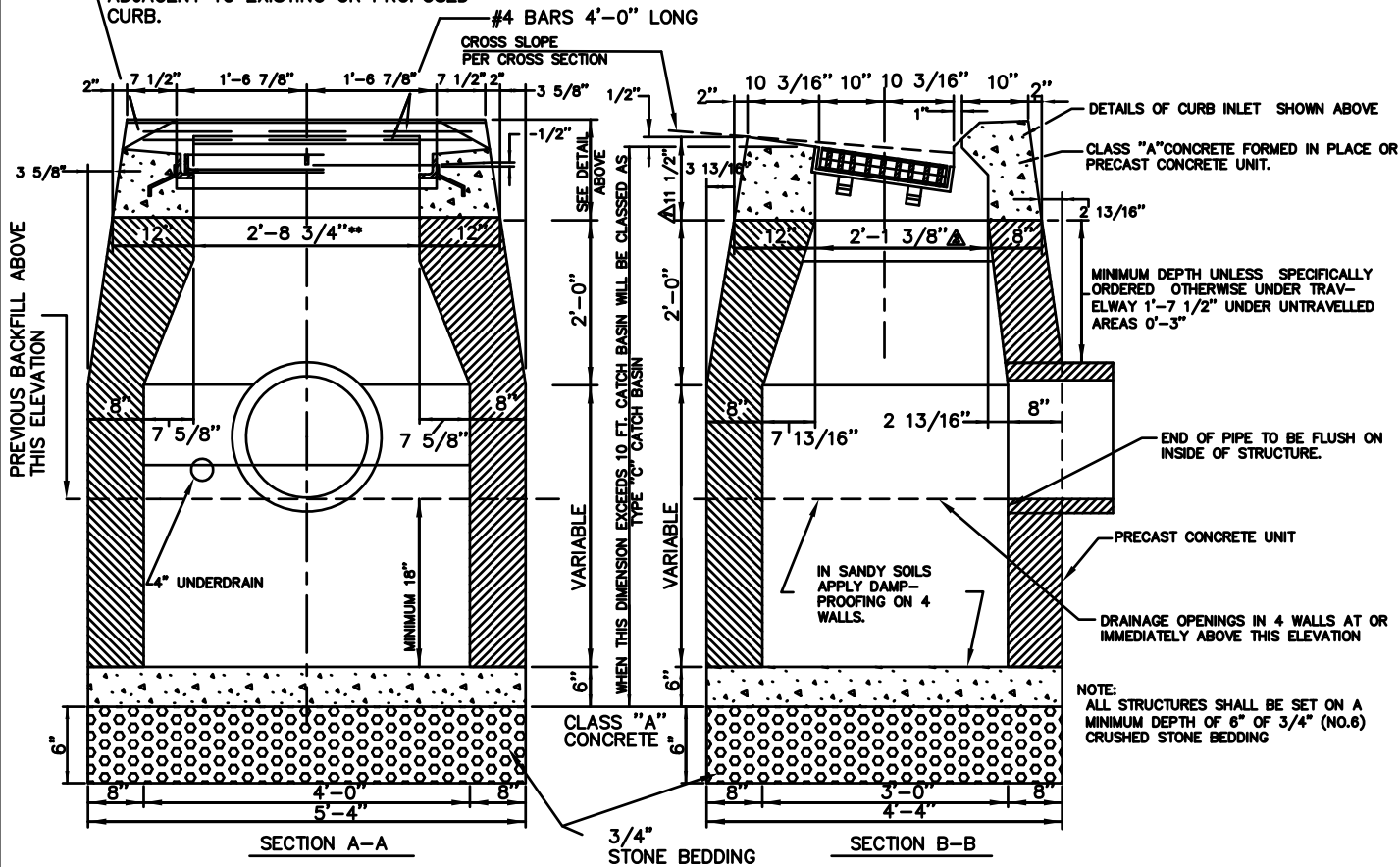
4" MIN. PERFORATED UNDERDRAIN WITH CAP
BACKFILLED WITH No.6 3/4" CRUSHED STONE
REFER TO DETAILS 4.4 FOR BACKFILL REQUIREMENTS



TO BE USED WHEN CURB INLET IS CONSTRUCTED IN A LINE OF BITUMINOUS CONCRETE LIP CURBING 6" HIGH.

NOTE: WHEN CATCH BASIN IS SET IN CONCRETE PAVEMENT THE 1/2" SLOPE ON THE TOP SURFACE SHALL BE CHANGED TO MATCH ADJOINING PAVEMENT.

ALTERNATE CONSTRUCTION WITH FULL CURB BACK TO BE USED AT LOCATIONS ADJACENT TO EXISTING OR PROPOSED CURB.



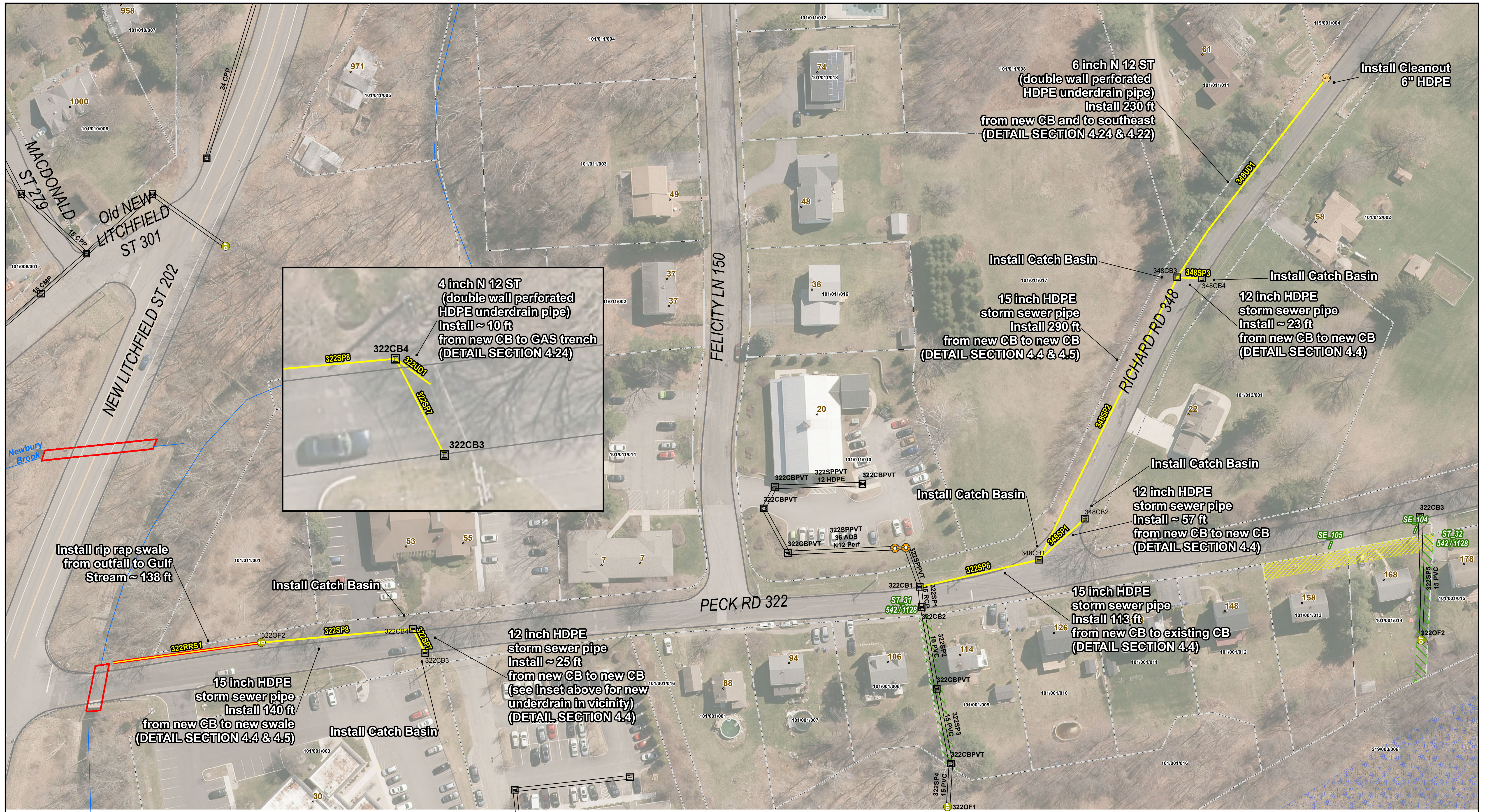
TYPE "C" CATCH BASIN

NOTES:

1. WALLS OF ALL CATCH BASIN OVER 10 FT DEEP TO BE INCREASED TO 12" THICKNESS. INSIDE DIMENSIONS TO REMAIN THE SAME.
2. PRECAST CONCRETE TOP SHALL BE APPROVED BY THE ENGINEER BEFORE INSTALLATION.
3. CATCH BASIN SUMPS SHALL BE OMITTED IF DIRECTED BY THE ENGINEER.
4. PROVIDE 4" PVC PERFORATED WEEP PIPE TO RELIEVE THE GROUNDWATER FROM THE PIPE BEDDING. PLACE AT ALL LOCATIONS WHERE PIPE ENTERS OR EXITS THE STRUCTURE.
5. ALL GRATES SHALL BE TYPE 'A' GALVANIZED GRATES.
6. CB TOP TO BE SET ON MIN OF 2" TO MAX 4" OF MASONRY FOR ADJ.

Project Specific Note:
Typical Pipe Invert Depth To Be
4 Feet Below Finished Grade

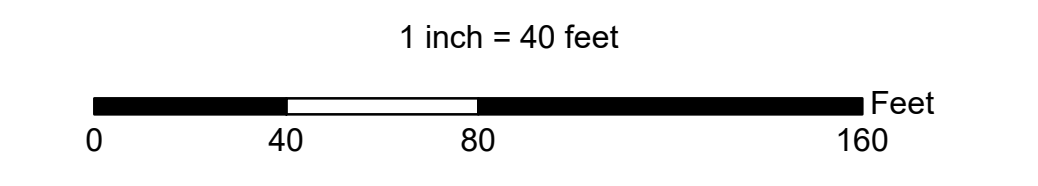
SCALE N.T.S. APPROVED	CITY OF TORRINGTON Engineering Department
RV. DATE JAN. 2002 APR. 2009 AUG. 2011	
TYPE "C" CATCH BASIN	



**Richard Rd./Peck Rd. Intersection
Storm Sewer System Drainage Improvement Locations**
Torrington, CT

- Storm sewer outfall
- Storm sewer manholes
- Catch basin
- Culvert Inlet/Headwall
- Storm sewer line
- Proposed storm sewer open drain
- Proposed storm sewer line
- Storm Detention Areas
- Sanitary Easement
- Sanitary and Storm Easement
- Storm Easement

Disclaimer:
This map is not a survey and is intended as a visual reference only. The City of Torrington makes no claims as to the accuracy of data shown.
-- Aerial photo 2016 State of CT
-- All other data City of Torrington GIS
Coordinate System: NAD 1983 StatePlane Connecticut FIPS 6000 Feet
Datum: North American 1983
Projection: Lambert Conformal Conic
False Easting: 1,000,000.0000
False Northing: 500,000.0000
Central Meridian: -72.7500
Standard Parallel 1: 41.2000
Standard Parallel 2: 41.5667
Latitude Of Origin: 40.8333
Units: Foot US



Drawn By: Engineering Dept. Date: 10/26/2018

Path: N:\SPRING_2018_ROAD_IMPROVEMENT_INVESTIGATIONS\Richard_Rd_Peck_Rd_DrainageRepairs Spring 2018\6.mxd