

City of Torrington



ENGINEERING DEPARTMENT
(860) 489-2234

140 Main Street • City Hall
Torrington, CT 06790-5245
Fax: (860) 489-2550

ADDENDUM No. 3

DATE ISSUED: August 1, 2019

RE: PATTERSON PARK AND FRANKLIN STREET IMPROVEMENTS

BID # PFI-027-072219RB

All bidders are hereby advised of the following amendments to the Contract Bid Documents, which are hereby made an integral part of the specifications for the subject project, prepared by The City of Torrington, to the same extent as all other documents. All work shall conform to the standards and provisions of same.

Bids submitted shall be deemed to include the Contract Document information as shown in Addendum No. 2. General bidders shall notify sub-bidders that may be affected by this addendum as applicable. Bidders shall be required to acknowledge receipt of this Addendum in the space provided on the Bid Proposal Form, Page BP-1. Failure to acknowledge this Addendum by the Bidder may result in the rejection of their bid. Bidders are directed to review changes to all portions of the work as changes to one portion may affect the work of another.

- 1. Revised contract documents and plan sheets as provided by BL Companies (Addendum #3 - 13 pages) can be obtained via digital download from the City of Torrington website at www.torringtonct.org/bids**

END OF ADDENDUM No. 3

ADDENDUM 3

DATE ISSUED	8/1/2019		
PROJECT NAME:	Patterson Park & Franklin Street Improvements		
CITY BID NO.	PFI-027-072219-RB	PROJECT NUMBER:	1900284

Addendum 3 Contract Changes

The following contract documents have been **revised** as a result of Addendum 3:

- SPECIAL PROVISIONS INDEX
- FORM OF BID
- ITEM 1002008A - LIGHT POLE AND FIXTURES (DECORATIVE) (SINGLE LUMINAIRE WITH BRACKET)
- ITEM 1002009A - LIGHT POLE AND FIXTURES (DECORATIVE) (DOUBLE LUMINAIRE WITH BRACKET)
- ITEM 1002010A - LIGHT POLE AND FIXTURES (DECORATIVE) (POST TOP)
- ITEM 1002110A - DECORATIVE LIGHT POLE FOUNDATION

The following plan sheets have been **revised** as a result of Addendum 3:

- Plan Sheet LP-1
- Plan Sheet LP-2
- Plan Sheet LP-3
- Plan Sheet ES-1

The following has been **added** to the contract documents as a result of Addendum 3:

- ITEM 1008124A – 1” Polyvinyl chloride conduit in trench (site lighting/communications)

ADDENDUM #3

SPECIAL PROVISIONS

GENERAL

SECTION 1.01	DEFINITION OF TERMS AND PERMISSIBLE ABBREVIATIONS
SECTION 1.02	GENERAL REQUIREMENTS

SITE MODIFICATIONS

SECTION 9.39	SWEEPING AND CLEANING UP
SECTION 9.39	SWEEPING FOR DUST CONTROL
SECTION 9.42	CALCIUM CHLORIDE FOR DUST CONTROL
SECTION 9.43	WATER FOR DUST CONTROL
SECTION 4.06	BITUMINOUS CONCRETE
SECTION 4.07	FIELD DENSITY TESTING CORRECTION
ITEM 0000110A	ADDITIONAL 2 INCH SCH 40 CONDUIT IN SAME TRENCH
ITEM 0000111A	ADDITIONAL 3 INCH SCH 40 CONDUIT IN SAME TRENCH
ITEM 0000112A	ADDITIONAL 4 INCH SCH 40 CONDUIT IN SAME TRENCH
ITEM 0069327A	CLEAN MASONRY (EXISTING WALL)
ITEM 0105180A	UTILITY CONFLICT RESOLUTION
ITEM 0201001A	CLEARING AND GRUBBING
ITEM 0202000A	EARTH EXCAVATION
ITEM 0202452A	TEST PIT
ITEM 0219011A	SEDIMENTATION CONTROL SYSTEM AT CATCH BASIN
ITEM 0304002A	PROCESSED AGGREGATE BASE
ITEM 0506026A	RETAINING WALL (C.I.P. CONCRETE SEAT WALL) – PATTERSON PARK
ITEM 0506027A	RETAINING WALL (C.I.P. CONCRETE SEAT WALL) – LINEAR PLAZA
ITEM 0506028A	RETAINING WALL (C.I.P. CONCRETE FLOOD WALL)
ITEM 0506703A	STONE STEPS (PATTERSON PARK)
ITEM 0506900A	CONCRETE COPINGS (CAST STONE CAP)
ITEM 0507001A	TYPE “C” CATCH BASIN (GRANITE CURB TOP)
ITEM 0507018A	TYPE “C-L” CATCH BASIN WITH PEDESTRIAN GRATE
ITEM 0507897A	YARD DRAIN
ITEM 0609001A	REPOINTED MASONRY

ITEM 0651011A	12" R.C. PIPE
ITEM 0651012A	15" R.C. PIPE
ITEM 0811001A	CONCRETE CURBING (FLUSH)
ITEM 0813041A	STONE CURBING (MOUNTABLE)
ITEM 0901005A	BOLLARD (FIXED - DECORATIVE)
ITEM 0901006A	BOLLARD (FIXED – STANDARD)
ITEM 0901007A	BOLLARD (REMOVABLE)
ITEM 0904040A	ANODIZED METAL BRIDGE RAIL
ITEM 0909501A	TIMBER RAIL FENCE
ITEM 0914030A	DECORATIVE ALUMINUM FENCE
ITEM 0914031A	DECORATIVE ALUMINUM GATE
ITEM 0921001A	CONCRETE SIDEWALK
ITEM 0921002A	CONCRETE SIDEWALK – 8" THICK (HEAVY DUTY SIDEWALK)
ITEM 0921003A	CONCRETE SIDEWALK (COLORED CONCRETE)
ITEM 0921008A	BRICK PAVERS ON CONCRETE
ITEM 0921009A	BRICK AMENITY STRIP
ITEM 0921024A	CONCRETE PAVERS (LABYRINTH)
ITEM 0949020A	DAFFODIL
ITEM 0949021A	DWARF PRAIRIE DROPSEED
ITEM 0949022A	NORTHWIND SWITCHGRASS
ITEM 0949063A	DWARF FOUNTAIN GRASS
ITEM 0949298A	DWARF FOTHERGILLA
ITEM 0949345A	LILY TURF
ITEM 0949565A	FEATHER REED GRASS
ITEM 0949757A	AUTUMN BRILLIANCE SERVICEBERRY
ITEM 0949763A	DWARF OAKLEAF HYDRANGEA
ITEM 0949838A	RED SUNSET RED MAPLE
ITEM 0949897A	SHAMROCK INKBERRY
ITEM 0949913A	CITY SLICKER RIVER BIRCH
ITEM 0949962A	EXCLAMATION PLANETREE
ITEM 0970006A	UNIFORMED MUNICIPAL POLICE OFFICER
ITEM 0970007A	TRAFFIC PERSON (UNIFORMED FLAGGER)
ITEM 0971001A	MAINTENANCE AND PROTECTION OF TRAFFIC
ITEM 0975004A	MOBILIZATION AND PROJECT CLOSEOUT
ITEM 0980001A	CONSTRUCTION STAKING
ITEM 0992090A	BENCH – CIRCULAR (WOOD SEATING MOUNTED TO CONCRETE SEAT WALLS)
ITEM 0992091A	BENCH – STRAIGHT (WOOD SEATING MOUNTED TO CONCRETE SEAT WALLS)
ITEM 0992103A	TRASH RECEPTACLE

ITEM 1002008A	LIGHT POLE AND FIXTURES (DECORATIVE) (SINGLE LUMINAIRE WITH BRACKET)
ITEM 1002009A	LIGHT POLE AND FIXTURES (DECORATIVE) (DOUBLE LUMINAIRE WITH BRACKET)
ITEM 1002010A	LIGHT POLE AND FIXTURES (DECORATIVE) (POST TOP)
ITEM 1002011A	CATENARY LIGHT POLE
ITEM 1002012A	CATENARY LIGHTING
ITEM 1002110A	DECORATIVE LIGHT POLE FOUNDATION
ITEM 1008124A	1" POLYVINYL CHLORIDE CONDUIT IN TRENCH (SITE LIGHTING/COMMUNICATIONS)
ITEM 1017054A	RE-FEED OF ELECTRICAL SERVICES TO 37 VOLKMAN LANE
ITEM 1017055A	RE-FEED OF ELECTRICAL SERVICES TO 33 FRANKLIN LANE
ITEM 1017056A	NEW FEED FOR METER PEDESTAL
ITEM 1017066A	ELECTRICAL TRANSFORMER CONCRETE PAD, HANDHOLE AND SILO
ITEM 1113011A	3 CONDUCTOR NO. 12 AWG, THWN
ITEM 1113012A	3 CONDUCTOR NO. 10 AWG, THWN
ITEM 1113013A	3 CONDUCTOR NO. 8 AWG, THWN
ITEM 1113014A	3 CONDUCTOR NO. 6 AWG, THWN
ITEM 1118012A	REMOVAL AND RELOCATION OF TRAFFIC SIGNAL EQUIPMENT
ITEM 1206023A	REMOVAL AND RELOCATION OF EXISTING SIGNS
ITEM 1210105A	GREENWAY TRAIL SURFACE TREATMENT COLOR
ITEM 1403501A	RESET MANHOLE (SANITARY SEWER)

SUPPLEMENTAL TECHNICAL SPECIFICATIONS

040140	MAINTENANCE OF STONE ASSEMBLIES
042000	UNIT MASONRY
047200	CAST STONE
079005	JOINT SEALERS

Patterson Park & Franklin Street Improvements

City Bid No. PFI-027-072219-RB
Addendum #3 - 08/01/2019

1001001	TRENCHING AND BACKFILLING (ELECTRIC, CABLE, PHONE)	750 L.F.	_____ Dollars and _____ Cents	\$ _____ -	\$ _____ -
1002008A	LIGHT POLE AND FIXTURES (DECORATIVE) (SINGLE LUMINAIRE WITH BRACKET)	2 EA.	_____ Dollars and _____ Cents	\$ _____ -	\$ _____ -
1002009A	LIGHT POLE AND FIXTURES (DECORATIVE) (DOUBLE LUMINAIRE WITH BRACKET)	10 EA.	_____ Dollars and _____ Cents	\$ _____ -	\$ _____ -
1002010A	LIGHT POLE AND FIXTURES (DECORATIVE) (POST TOP)	8 EA.	_____ Dollars and _____ Cents	\$ _____ -	\$ _____ -
1002011A	CATENARY LIGHT POLE	9 EA	_____ Dollars and _____ Cents	\$ _____ -	\$ _____ -
1002012A	CATENARY LIGHTING	750 LF	_____ Dollars and _____ Cents	\$ _____ -	\$ _____ -
1002110A	DECORATIVE LIGHT POLE FOUNDATION	29 EA.	_____ Dollars and _____ Cents	\$ _____ -	\$ _____ -
1002203	TRAFFIC CONTROL FOUNDATION – PEDESTAL-TYPE I (TRAFFIC)	1 EA.	_____ Dollars and _____ Cents	\$ _____ -	\$ _____ -
1003924	REMOVE LIGHT STANDARD AND CONCRETE BASE	2 EA.	_____ Dollars and _____ Cents	\$ _____ -	\$ _____ -
1008124A	1" POLYVINYL CHLORIDE CONDUIT IN TRENCH (SITE LIGHTING/COMMUNICATIONS)	1500 L.F.	_____ Dollars and _____ Cents	\$ _____ -	\$ _____ -

ITEM # 1002008A – LIGHT POLE AND FIXTURES (DECORATIVE) (SINGLE LUMINAIRE WITH BRACKET)

ITEM # 1002009A – LIGHT POLE AND FIXTURES (DECORATIVE) (DOUBLE LUMINAIRE WITH BRACKET)

ITEM # 1002010A – LIGHT POLE AND FIXTURES (DECORATIVE) (POST TOP)

ITEM # 1002110A - DECORATIVE LIGHT POLE FOUNDATION

9.92 .01 - Description: Under this item the contractor shall provide and install all decorative light bases and decorative street lights as shown on the plans and specified herein.

9.92 .02 - Materials: The materials for the work shall conform to the following:

1. Decorative Street Lights: Contractor responsible for providing and installation of the following poles and lamps:

MANUFACTURER: LUMEC (SIGNIFY)

LUMINAIRE:

FIXTURE: SERENADE DSX S55

BRACKET: LUMEC – CRA-2F-180DEG-BKTX

POLE:

- 1. POST TOP: RAF805-13-ARRA-BA-GFII-PS-3/4X20-12 ½-DEC-BKTX-LMS52324A**
- 2. BRACKET ARMS: RA805R-18-CAP1-GFII-MPL-PSS16-12.5-BKTX**
- 3. BRACKET: CRA-2F-180DEG-BKTX**
- 4. BANNER ARM: BAD – DOUBLE ARM (24” LENGTH)**

MOUNT: REFER TO LIGHTING PLANS

The contractor responsible for installation of pre-cast concrete bases, trenching and laying of conduit with sweeps in and out of base, a driven ground rod with bare copper wire at each base, and installation of the pole and lamps and receptacle. Coordinate with Eversource for their portion of work. The contractor is responsible for providing and installing wire from the power pedestal to each pole with lamp and receptacle.

2. Decorative Light Base: The contractor is responsible for installation of pre-cast concrete bases, trenching and laying of conduit with sweeps in and out of base, conduit within foundation and reducers, a driven ground rod with bare copper wire at each base, and installation of each pole with lamp and receptacle.

ITEMS #1002008A, #1002009A, #1002010A, #1002110A
LIGHT POLE AND FIXTURES (DECORATIVE) (SINGLE LUMINAIRE WITH BRACKET), LIGHT POLE
AND FIXTURES (DECORATIVE) (DOUBLE LUMINAIRE WITH BRACKET), LIGHT POLE AND FIXTURES
(DECORATIVE) (POST TOP), DECORATIVE LIGHT POLE FOUNDATION

3. Concrete foundations: Class “F” concrete shall conform to the requirements of section 6.01 and Article M.03.01 of the State of Connecticut Department of Transportation Standard Specifications for Roads, Bridges and Incidental Construction Form 817.

The reinforcing steel shall conform to Article M.06.01 of the State of Connecticut Department of Transportation Standard Specifications for Roads, Bridges and Incidental Construction Form 817.

9.92.03 – Construction Methods:

The decorative street lights shall be installed in accordance with the manufacturer's recommendations and anchor bolted to a concrete base at the location and in the method as shown on the plans or as directed by the Engineer.

The concrete foundations for the decorative lights shall be set on flat compacted subgrade. It shall be backfilled in compacted 6” lifts up to the depth as specified in the construction documents.

Contractor shall install decorative light bases in accordance with the methods of construction as shown on the plans or as directed by the Engineer.

9.92.04 – Method of Measurement:

The work shall be measured for payment by the actual number of each decorative street light and decorative light base complete and accepted in place.

There will be no measurement of payment for the cost of conduit within foundation and reducers, brackets, banner arms, GFI receptacles, timer with photocell, subbase preparation, concrete, reinforcement, coordination, or trenching and backfilling.

9.92.05 – Basis of Payment:

This work will be paid for at the contract unit price per each (ea.) light pole and fixtures (decorative) and decorative light pole foundation complete and accepted in place, which price shall include all coordination, materials, excavation, reinforcement, concrete, subbase preparation, equipment, tools and labor incidental thereto the placement of each item.

Light pole, bracket, banner arms, receptacles and timer with photocell shall be included in Contract unit price for “Light Pole and Fixtures (Decorative).”

ITEMS #1002008A, #1002009A, #1002010A, #1002110A
LIGHT POLE AND FIXTURES (DECORATIVE) (SINGLE LUMINAIRE WITH BRACKET), LIGHT POLE
AND FIXTURES (DECORATIVE) (DOUBLE LUMINAIRE WITH BRACKET), LIGHT POLE AND FIXTURES
(DECORATIVE) (POST TOP), DECORATIVE LIGHT POLE FOUNDATION

Pay Item

Pay Unit

Light Pole and Fixtures (Decorative) (Single Luminaire with Bracket)	ea.
Light Pole and Fixtures (Decorative) (Double Luminaire with Bracket)	ea.
Light Pole and Fixtures (Decorative) (Post Top)	ea.
Decorative Light Pole Foundation	ea.

9.92.06 – Notice to Contractor:

The quantities for all light pole items may decrease should the city decide to change the design pattern.

JOB NAME: PATTERSON PARK AND FRANKLIN STREET PLAZA
 APEX LIGHTING SOLUTIONS
 REFLECTANCES: N/A
 WORKPLANE/CALC PLANE: @ GRADE
 MOUNTING HEIGHT: SEE LUMINAIRE SCHEDULE
 APPS: CR
 SALES: SP

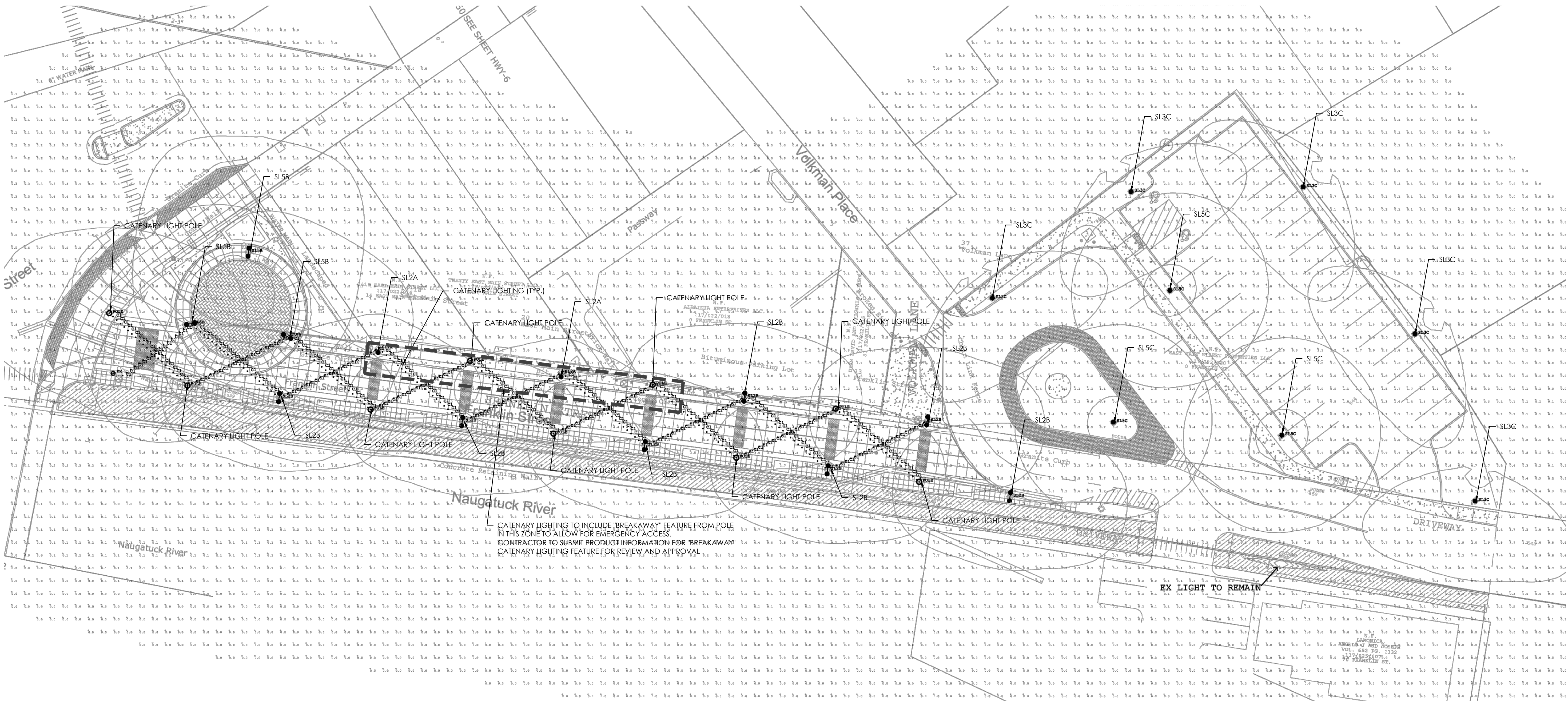
Label	Arrangement	Lumens	Input Watts	LLF	BUG Rating	Description
374*(1)	C1 SINGLE	255	3.37	0.281	B0-U3-G1	CALI ML2000-240.C.-1W-LED-2.7K-GSF-DM-WET CATENARY MOUNTED @ 17.5FT AFG TO BOF
EX*(2)	SINGLE	15166	130.4	0.740	B2-U3-G3	EXISTING FIXTURE TO REMAIN
9	POLE	N/A	N/A	N/A	N/A	LUMEC RA805R-18-CAP1-GF11-MPL-PSS16-13-BKTX
2	SL2A	SINGLE	5196	55	B2-U3-G2	LUMEC S55-55W48LED4K-T-ACDR-LE2-VOLT-DMG-SFX-PH8-BKTX MOUNTED TO RA805R-18-CAP1-GF11-MPL-PSS16-13-BKTX W/ CRA-F-BKTX BRACKET W/ OPTICAL CENTER @ 14.64FT AFG
7	SL2B	BACK-BACK	5196	55	B2-U3-G2	LUMEC S55-55W48LED4K-T-ACDR-LE2-VOLT-DMG-SFX-PH8-BKTX MOUNTED TO RA805R-18-CAP1-GF11-MPL-PSS16-13-BKTX W/ CRA-2F-180DEG-BKTX BRACKET W/ OPTICAL CENTER @ 14.64FT AFG
5	SL3C	SINGLE	5409	53.3	B1-U3-G2	LUMEC S55-55W48LED4K-T-ACDR-LE3-VOLT-DMG-SFX-PH8-BKTX MOUNTED TO RA805R-13-BAS20 (2) -GF11-3/4X20-12-1/2DEC-BKTX W/ OPTICAL CENTER @ 15FT AFG
3	SL5B	BACK-BACK	6092	55	B3-U3-G2	LUMEC S55-55W48LED4K-T-ACDR-LE5-VOLT-DMG-SFX-PH8-BKTX MOUNTED TO RA805R-18-CAP1-GF11-MPL-PSS16-13-BKTX W/ CRA-2F-180DEG-BKTX BRACKET W/ OPTICAL CENTER @ 14.64FT AFG
3	SL5C	SINGLE	6092	55	B3-U3-G2	LUMEC S55-55W48LED4K-T-ACDR-LE5-VOLT-DMG-SFX-PH8-BKTX MOUNTED TO RA805R-13-BAS20 (2) -GF11-3/4X20-12-1/2DEC-BKTX W/ OPTICAL CENTER @ 15FT AFG

Label	Grid Z	Avg	Max	Min	Avg/Min	Max/Min
SITE	0	0.86	6.8	0.0	N.A.	N.A.
GREENWAY		2.60	5.1	0.4	6.50	12.75
LINEAR PLAZA		4.29	6.6	2.4	1.79	2.75
NORTH SIDE LINEAR PLAZA		4.05	6.1	2.4	1.69	2.54
PARKING LOT		1.35	2.7	0.3	4.50	9.00
PATTERSON PARK PLAZA		4.74	6.8	2.9	1.63	2.34
SOUTH SIDE LINEAR PLAZA		4.30	6.6	2.5	1.72	2.64

(1) LUMINAIRE COUNT OF 374 EXTENDS OVER APPROXIMATELY 750 LF OF CATENARY WIRE
 (2) EXISTING FIXTURE TO REMAIN

GENERAL LIGHTING NOTES

- ALL WORK SHALL BE DONE IN STRICT ACCORDANCE WITH ALL REQUIREMENTS OF ANY LOCAL APPLICABLE CODES OR ORDINANCES, PUBLIC UTILITY COMPANY REGULATIONS, STATE CODE, AND NATIONAL ELECTRICAL CODE WITH INTERIM AMENDMENTS THERETO.
- ALL MATERIALS SHALL CONFORM TO THE LATEST ISSUE OF ALL APPLICABLE STANDARDS AS ESTABLISHED BY EEL, NEMA, ASTM, IPCEA, NATIONAL BOARD OF FIRE UNDERWRITERS, AND UNDERWRITERS LABORATORIES INC.
- THE CONTRACTOR SHALL TEST THE LIGHTING AFTER INSTALLATION WITH THE OWNER, AND PROVIDE TO OWNER WARRANTY AND MAINTENANCE INFORMATION. THE CONTRACTOR SHALL MAKE ADJUSTMENTS AND/OR MODIFICATIONS AS REQUIRED BY THE OWNER TO OBTAIN EVEN LIGHT DISTRIBUTION.
- CONTRACTOR SHALL LEAVE ENTIRE ELECTRICAL SYSTEM INSTALLED BY THE CONTRACTOR IN PROPER WORKING CONDITION AND REPLACE WITHOUT ADDITIONAL CHARGE ALL WORK OR MATERIALS WHICH MAY DEVELOP DEFECTS WITHIN A PERIOD OF ONE (1) YEAR FROM DATE OF FINAL ACCEPTANCE BY THE ENGINEER.
- THE CONTRACTOR SHALL SUBMIT SHOP DRAWINGS OF ALL PRODUCTS, BASES AND CONDUITS TO SITE ENGINEER FOR REVIEW AND APPROVAL PRIOR TO DELIVERY OF MATERIAL TO SITE. ALLOW A MINIMUM OF 14 WORKING DAYS FOR REVIEW. IF ALTERNATIVE LIGHTING IS PROPOSED SUBMIT A PHOTOMETRIC FOOT-CANDLE LAYOUT ALONG WITH ANNUAL MAINTENANCE REQUIREMENTS AND ANTICIPATED COSTS.
- LIGHTS ARE DESIGNED TO PROVIDE EVEN LEVELS OF ILLUMINATION AND AVOID GLARE ONTO NEIGHBORING PROPERTIES. FINAL DESIGN MAY VARY PENDING MANUFACTURER'S RECOMMENDATIONS.
- THE CONTRACTOR WILL PROVIDE AND INSTALL ALL MATERIAL NECESSARY TO COMPLETE THE SITE LIGHTING SYSTEM INCLUDING BUT NOT LIMITED TO CONDUIT, BASES, ANCHOR BOLTS, POLES, SITE LIGHTS AND LAMPS.
- ALL LIGHTS TO BE AS LISTED IN SCHEDULE OR APPROVED EQUIVALENT.
- LIGHT POLES, AND BRACKETS TO BE AS SHOWN ON DETAILS OR APPROVED EQUIVALENT.
- WIRE AND CABLE SHALL BE COPPER AND CONFORM TO THE FOLLOWING NEC TYPE THHN/THWN SOLID FOR NO. 12 AND NO. 10. NEC TYPE THHN/THWN STRANDED FOR NO. 8 AND LARGER. RIGID STEEL CONDUIT SHALL BE GALVANIZED. FITTINGS SHALL BE CAST FERROUS MATERIAL WITH A CADMIUM OR ZINC PLATED FINISH.
- ALL EQUIPMENT SHALL BE GROUNDED AND BONDED IN ACCORDANCE TO NEC.
- COORDINATE EXACT LUMINAIRE COUNT WITH LIGHTING PLAN.



GENERAL DISCLAIMER:
 Calculations have been performed according to IES standards and good practice. Some differences between measured values and calculated results may occur due to tolerances in calculation methods, testing procedures, component performance, measurement techniques and field conditions such as voltage and temperature variations. Input data used to generate the attached calculations such as room dimensions, reflectances, furniture and architectural elements significantly affect the lighting calculations. If the real environment conditions do not match the input data, differences will occur between measured values and calculated values.

• LLF Determined Using Current Published Lamp Data

NOTE TO REVIEWER:
 Total Light Loss Factor (LLF) applied at time of design is determined by applying the Lamp Lumen Depreciation (LLD) from current lamp manufacturer's catalog, a Luminaire Dirt Depreciation Factor (LDD) based on IES recommended values and a Ballast Factor (BF) from current ballast specification sheets. Application of an incorrect Light Loss Factor (LLF) will result in forecasts of performance that will not accurately depict actual results.

For proper comparison of photometric layouts, it is essential that you insist all designers use correct Light Loss Factors.



355 Research Parkway
 Meriden, CT 06450
 (203) 630-1406
 (203) 630-2615 Fax

PATTERSON PARK & FRANKLIN STREET IMPROVEMENTS

FRANKLIN STREET
 TORRINGTON, CT

No.	Date	Desc.
1.	04/27/2019	REVISIONS PER CITY COMMENTS
2.	05/01/2019	ISSUED FOR BID
3.	07/24/2019	APPENDIX #2
4.	07/24/2019	APPENDIX #3
5.	08/07/2019	APPENDIX #3

Designed W.E.V.
 Drawn W.E.V.
 Reviewed
 Scale 1"=20'
 Project No. 1900284
 Date 04/19/2019
 CAD File: LP190028401

Title
LIGHTING PLAN
 Sheet No.

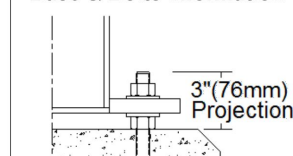


LP-1

2019/04/25 10:45:21 AM C:\Users\jwz\OneDrive\Documents\Projects\2019\2019-04-25\2019-04-25.dwg PLOT: 1900284

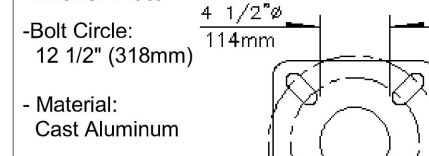
TORRINGTON DOUBLE PATTERSON PARK (Reference=L66711-3)

Base & Bolts Information



Comes with 4 steel anchor bolts, 3/4" X 2 1/2" X 3" J Type Bolts, 8 nuts and 8 washers. Important: Do not obstruct space between anchor plate and concrete base.

Anchor Plate



NOTE: Bolt Circle Allowed: 9 1/4" to 12 3/4" 234mm to 324mm

Qty 1 Pole RA805R-18-CAP1-GFII-MPL-PSS16-12.5-BKTX

Description of Components:

Pole Shaft: Shall be made from a 5" (127mm) round extruded 6061-T6 aluminum tubing, having a 0.247" (6.2mm) wall thickness, welded to both the bottom and top of the anchor plate.

Maintenance Opening: The pole shall have a 2" x 4 1/2" (51mm x 114mm) maintenance opening centered 20" (508mm) from the bottom of the anchor plate, complete with a weatherproof aluminum cover and a copper ground lug.

Base Cover: Two piece round base cover made from cast 356 aluminum, complete with a cast-in access door, mechanically fastened with stainless steel screws.

Pole Options: (CAP1) Decorative Flat Pole Cap, Overlap type. (GFII) Duplex receptacle, WR Weather Resistant, 120 volts, ground fault interrupter, complete with an in-use weatherproof aluminum painted cover. Possibility of padlock (Padlock not included), 15 amp., NEMA 5-15R.

Important: Lumeç strongly recommends the installation of the complete lighting assembly with all of its accessories upon the anchoring of the pole. This will ensure that the structural integrity of the product is maintained throughout its lifetime.

Pole Weight: 77 lbs (35 kg)

LIGHT POLE DETAIL - DOUBLE HEAD FIXTURES

N.T.S

LUMEC
by @ignify

Urban

Serenade DSX

S55 - S55C1-C2



Lumeç's Serenade DSX LED post top luminaires are a beautiful staple of elegance and subtlety with a mighty and brilliant heart. It can be used to accentuate any environment no matter how harsh the prevailing conditions might be. The Serenade is a straightforward, no-nonsense luminaire, designed for performance and reliability.

VARIABLES - SEE LIGHTING SCHEDULE SH. LP-1 TO BE SELECTED BY CITY

Ordering guide: Luminaire

Example: S55-7W32LED4K-T-ACDR-LE3-120V-DMG-SFX-RC-BKTX

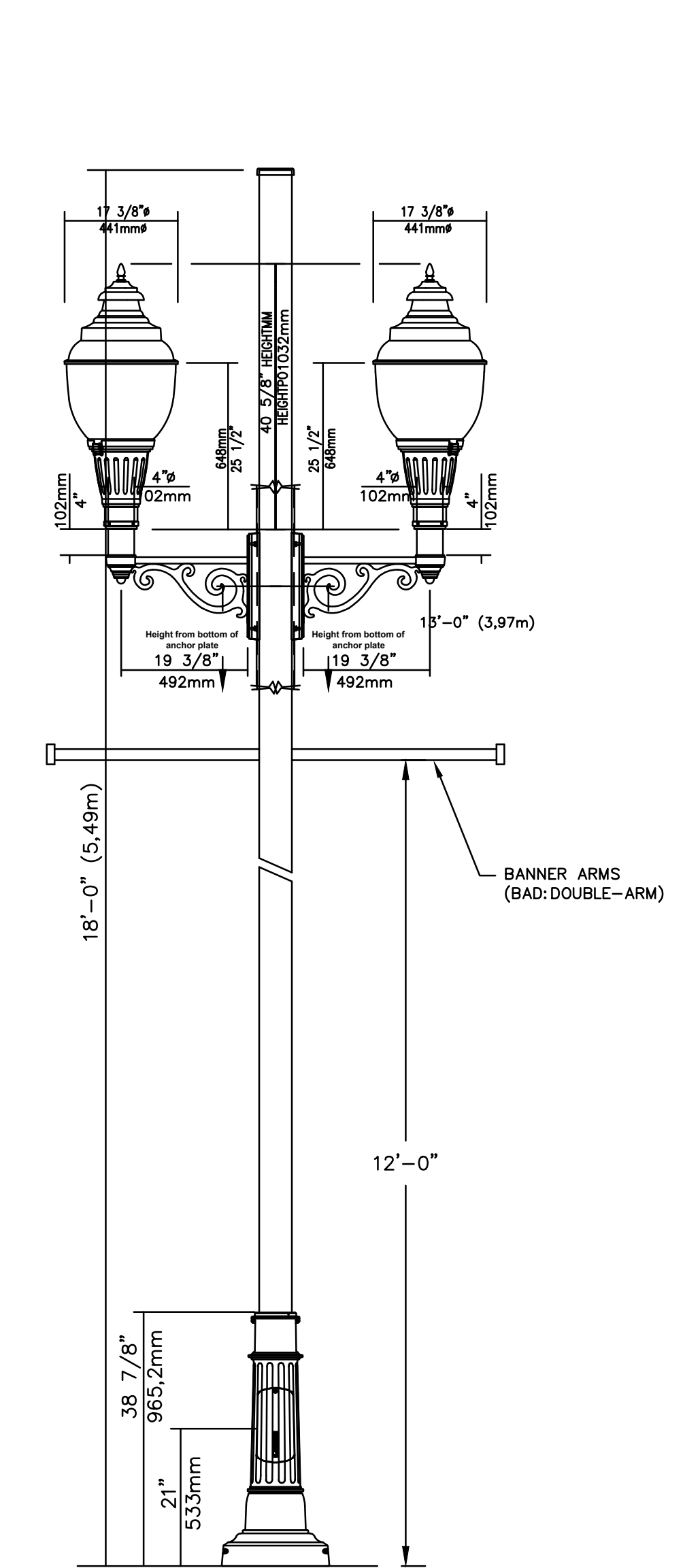
Series	LED module	Lamp type	Globe material	Optical system	Voltage	Driver options	Adaptors
S55	SSW4BLE03K	T	ACDR Acrylic globe GL Glass globe	LE2 Type II (AS1M) LE3 Type III (AS1M) LE3W Type III (AS1M) wide LE4 Type IV (AS1M) LE5 Type V (S1MM)	120 208 240 277 347 480	AST- Pre-set, progressive start-up CLO- Pre-set, manage luminance degradation DALI- Pre-set, compatible with the DALI control system OTL- Pre-set to signal end of life of the lamp DMG Dimming level set by user CDMG23- 8 hrs. 25% reduction CDMG50- 8 hrs. 50% reduction CDMG75- 8 hrs. 75% reduction CDMG25- 6 hrs. 25% reduction CDMG50- 6 hrs. 50% reduction CDMG75- 6 hrs. 75% reduction CDMG25- 4 hrs. 25% reduction CDMG50- 4 hrs. 50% reduction CDMG75- 4 hrs. 75% reduction	SFOK Oak leaf filter Standard filter SFX SFX

Ordering guide (continued)

Luminaire options	Poles & Brackets	Finish
PH8		BKTX
BC Block connector BST Brass decorative cupola BSTC Brass decorative cupola with clear coat CPT Copper decorative cupola CPTC Copper decorative cupola with clear coat CR5S Decorative crown FN2 Decorative finial FMS Decorative finial FNS Decorative finial FNB Decorative finial FNO Decorative finial	FRN Decorative finial FNC Finial painted copper HS House Side Shield OVR Override function PH8 Photovoltaic cell PHS Shortly Cap PHXL Photovoltaic cell, extended length RC- Receptacle 3 pins SFS Surge protector TNS 3" dia. Tenon adaptor TNS3 3 1/2" dia. Tenon adaptor	BE2TX Textured midnight blue BE5TX Textured ocean blue BE8TX Textured royal blue BG2TX Textured Sandstone BKTX Textured black BR2TX Textured bronze GN1TX Textured forest green GN2TX Textured forest green GN3TX Textured forest green GR Grey sandstone GY3TX Textured medium grey NAT Natural aluminum RD2TX Textured burgundy RD4TX Textured scarlet TG Hammerstone gold WH1X Textured white

LUMINAIRE - LUMEC SERENADE

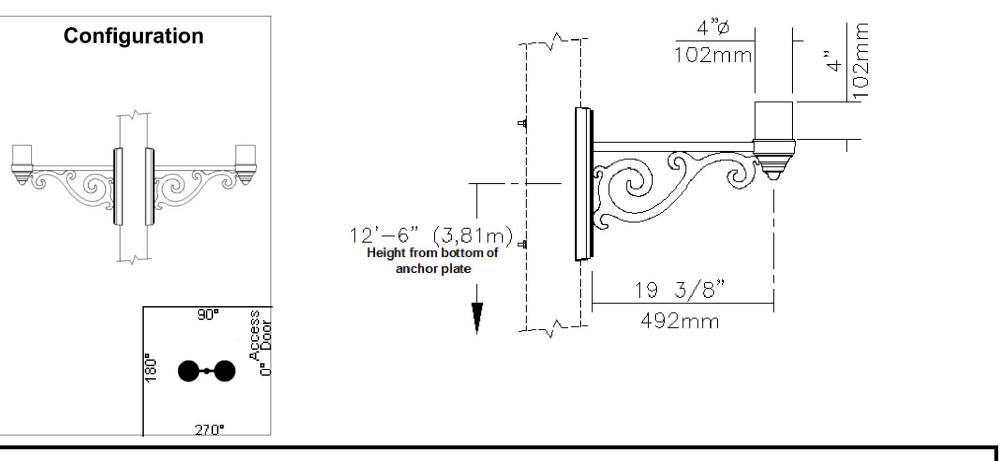
N.T.S



TYPICAL DOUBLE HEADED LUMINAIRE MOUNTING DETAIL

N.T.S

TORRINGTON DOUBLE PATTERSON PARK (Reference=L66711-3)

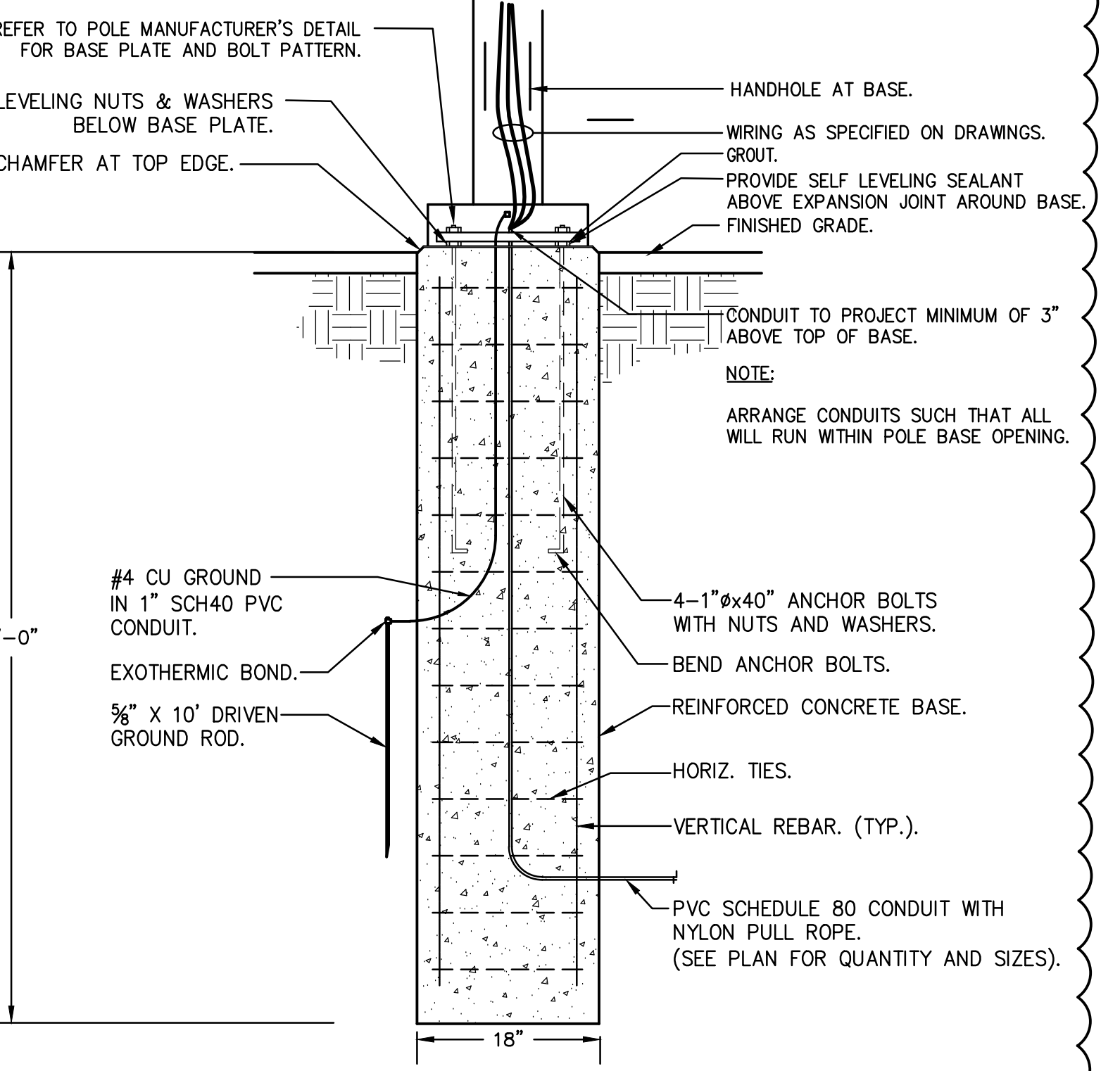


Qty 1 Mid-Pole Bracket CRA-2F-180DEG-BKTX

Description of Components:
Arm: Shall be made from cast 356 aluminum complete with a 1" x 2" (25mm x 51mm) aluminum section and welded on an anchor plate.
Mounting Plate: Made of cast 356 aluminum, mechanically assembled to pole by two through bolts.
Bracket Properties (Weight and EPA): 25 lbs (11.4 kg), 2.13 ft²

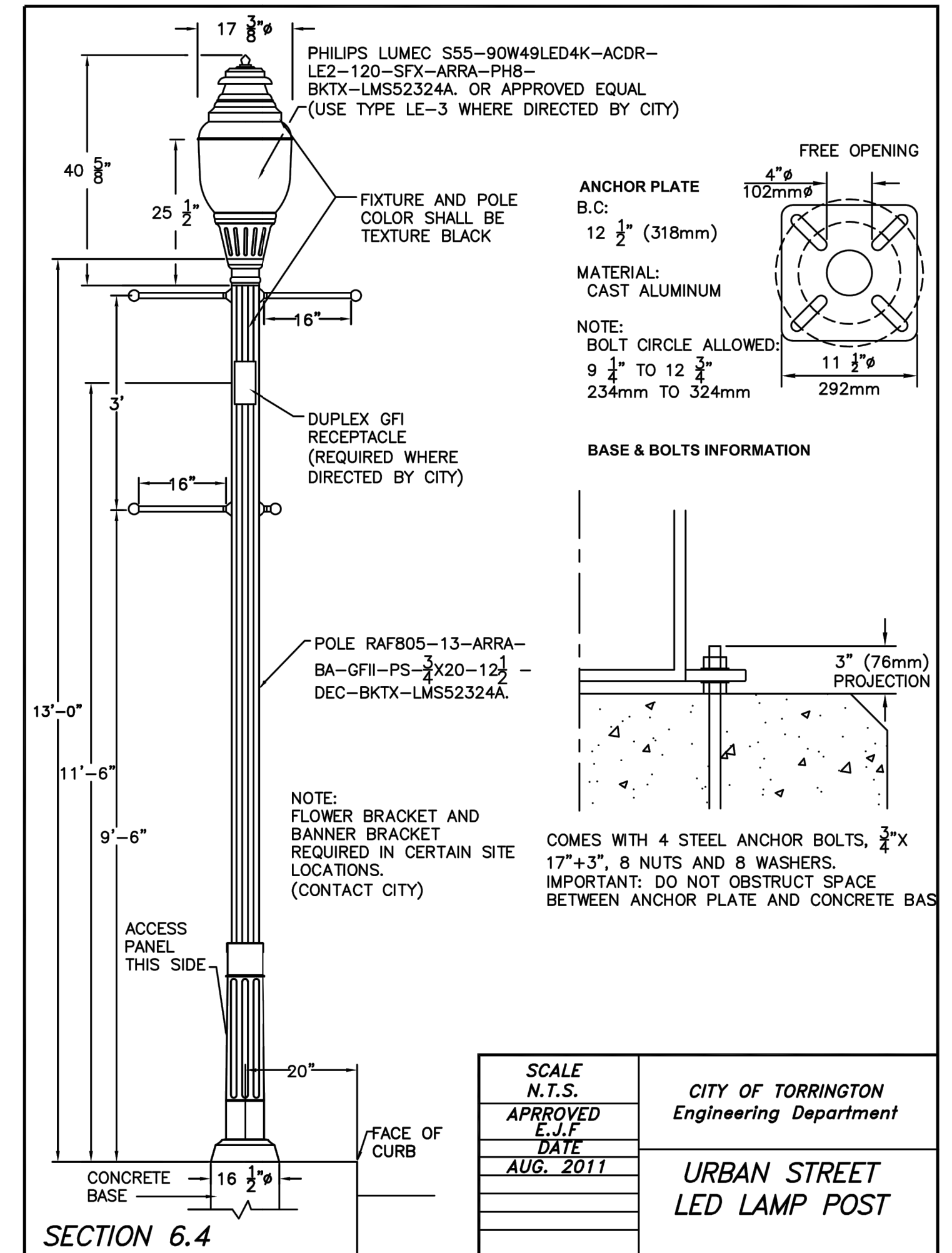
TYPICAL DOUBLE HEADED LUMINAIRE MOUNTING BRACKET DETAIL

N.T.S



LIGHT POLE BASE GROUNDING DETAIL

N.T.S



LIGHT POLE DETAIL - POST TOP

N.T.S



355 Research Parkway
Meriden, CT 06450
(203) 630-1406
(203) 630-2615 Fax

PATTERSON PARK & FRANKLIN STREET IMPROVEMENTS
FRANKLIN STREET
TORRINGTON, CT

REVISIONS

No.	Date	Desc.
1.	04/27/2019	REVISIONS PER CITY COMMENTS
2.	05/01/2019	ISSUED FOR BID
3.	07/24/2019	ADDENDUM #2
4.		
5.	08/07/2019	ADDENDUM #3

Designed W.E.V.
Drawn W.E.V.
Reviewed
Scale NONE
Project No. 1900284
Date 04/19/2019
CAD File: LP190028401

Title
LIGHTING DETAILS

Sheet No.

LP-2

- FEATURES**
- APPLICATIONS** Indoor and Outdoor
 - VOLTAGE** 120V
 - LAMP** LED Lamp Included
 - DIMMING** Forward Phase
 - WATTS** 1W or 3W
 - LENGTH** Built to Order
 - FINISH** Black
 - FEED** Standard 6' Leads
 - STRAIN RELIEF** Cable Included
 - MOUNTING** Aircraft Cable Not Included
 - LISTING** Dry or Wet Location
ANSI/UL1598
CSA 22.2 No. 250.0-04,
2nd Edition
Mech. Copes, Canopies
LED LAMP LIFE 50,000 hrs. (GSF, SSF, SSC)
20,000 hrs. (GSFL)
UV RATING Sunlight Resistance
MAXIMUM RUN 250 Feet

APPLICATIONS

Designed for indoor and outdoor use, marketLITE is ideal for many applications including the amusement, recreation, and architectural industries. marketLITE is used in: Restaurants, Casinos, Street Decorations, Amusement Parks, Shopping Malls, Promenades, and more.

ELECTRICAL

marketLITE with LEDs is available in 120 Volts. marketLITE is a 20 amp system (12 gauge wire). No transformers or drivers are required.

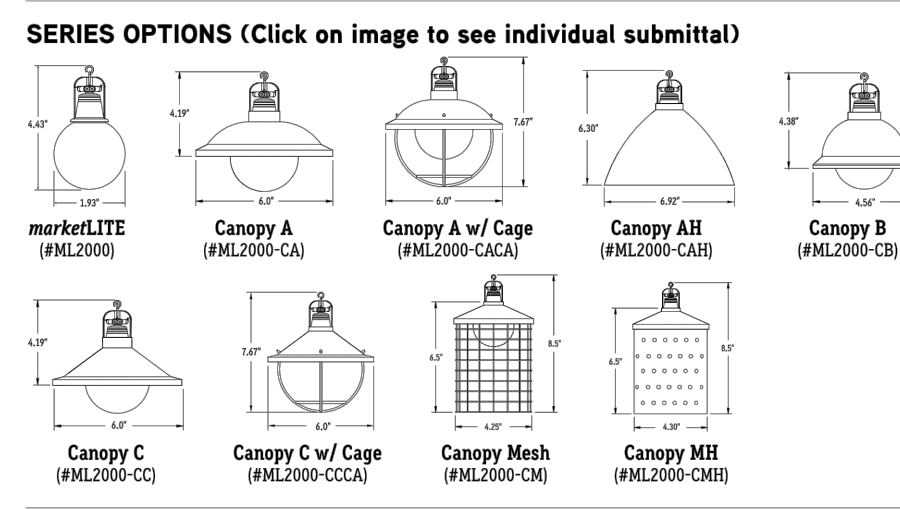
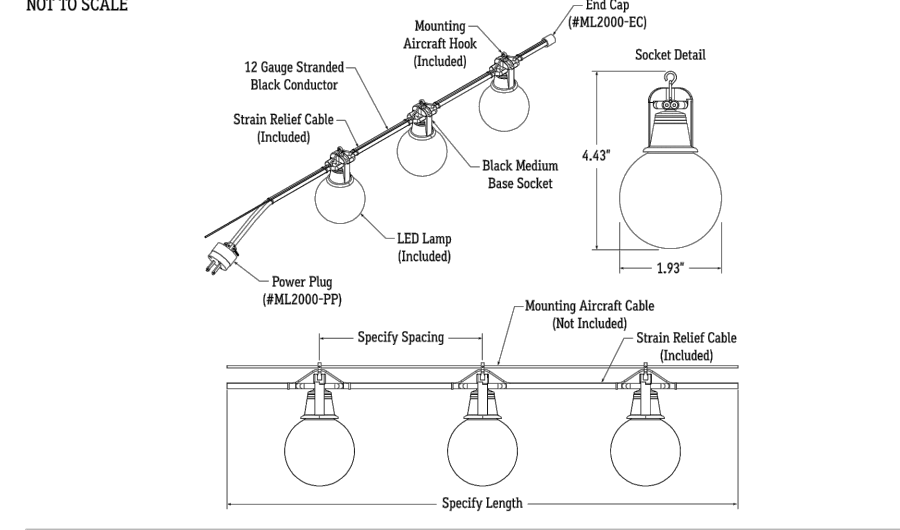
INSTALLATION

marketLITE is an easy-to-install lighting product that can be field cut to meet your lighting requirements. See installation instructions for additional details.

LAMP SPECIFICATIONS

LAMP NUMBER	DESCRIPTION
2.4K	2400K Warm White
2.7K	2700K Warm White
3.0K	3000K Warm White
5.0K	5000K Cool White
A	Amber
R	Red
G	Green
B	Blue

Notes: marketLITE can be hardwired for Dry and Wet Location. See installation instructions for additional information.



SPECIFY PRODUCT CODE (Use drop down menu to complete table or fill in the blanks)

SERIES	SPACING	LAMP	DIMMING	LISTING
ML2000	12" O/C	2.7K-GSF	5.0K-SSF	Indoor (DRY)
ML2000-CA**	18" O/C	5.0K-GSF	2.7K-SSC	Outdoor (WET)
ML2000-CACA**	24" O/C	2.4K-GSFL	5.0K-SSC	Leave blank for Non-Dimming
ML2000-CAH**	36" O/C	2.7K-GSFL	A-SSC	
ML2000-CB**	48" O/C	3.0K-GSFL	R-SSC	
ML2000-CC**	60" O/C	5.0K-GSFL	G-SSC	
ML2000-CCA**	60" O/C	2.7K-SSF	B-SSC	
ML2000-CM**				
ML2000-CMH**				

**Standard canopy finish is Black (BK) outside and Black (BK) inside. See individual submittal for other finish options.

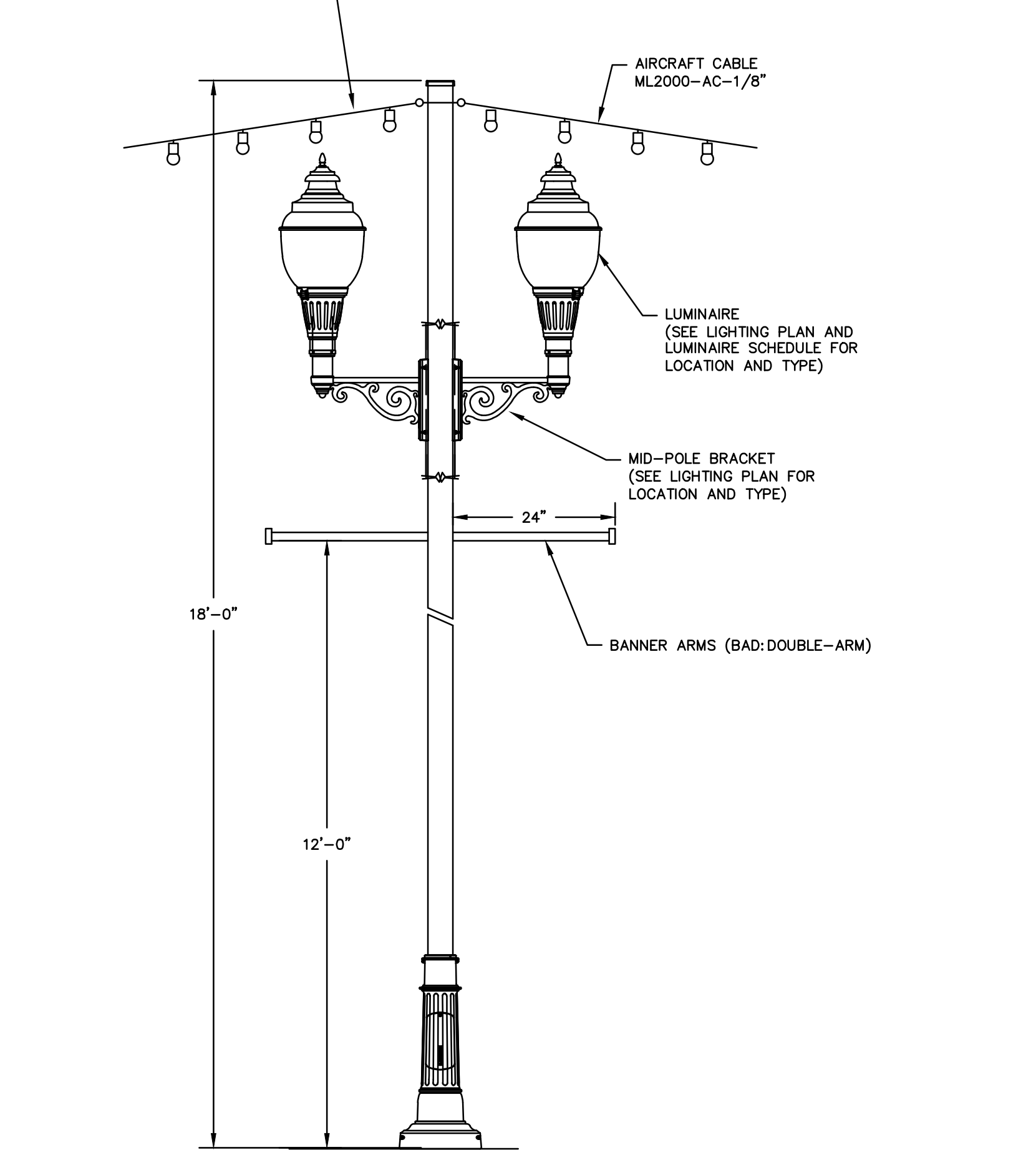
CALIFORNIA ACCENT LIGHTING, INC.
2034 E. Lincoln Ave. #431, Anaheim, CA 92806
ph. 800.921.CALI (2254) or 714.535.7900 \ fax. 714.535.7902
info@calighting.com \ calighting.com

NOTES
1. MATERIAL: POLYMER PLASTIC BULB

CATENARY LIGHTS

N.T.S.

NOTES
1. SYSTEM INCLUDES CALI MARKETLITE FIXTURES AND ACCESSORIES.
2. CATENARY LIGHTING CONTRACT UNIT PRICE SHALL BE MEASURED BY LINEAR FOOT COMPLETED. CATENARY LIGHT POLE CONTRACT UNIT PRICE SHALL BE MEASURED BY EACH COMPLETED.
3. CATENARY LIGHTING CONTRACT UNIT PRICE SHALL INCLUDE CATENARY LIGHTING FIXTURES, WIRING, HARDWARE INSTALLATION AND JUNCTION BOXES, AIRCRAFT CABLE, CONNECTIONS TO LIGHT POLES, MOUNTING PLATES, CABLE LOCKS AND OTHER NECESSARY ACCESSORIES FOR COMPLETE INSTALLATION OF CATENARY LIGHTING SYSTEM.



SCHEMATIC ELEVATION OF CONNECTION AT LIGHT POLE CATENARY LIGHTS

N.T.S.

legrand Outdoor Charging Station

Power Pedestal

Station features rugged aluminum construction.

- NEMA 3R listed for use in outdoor locations.
- Aluminum body is 0.188" (4.78mm) thick and powder-coated with durable, outdoor-rated paint. Mounts into concrete with four L bolts.
- Available prewired with two or three devices, per chart below. Devices include weather-resistant 20A GFCIs and 4-port USB outlets.
- Also available unwired in two- or three-gang versions. Prewired versions can be populated with any combination of weather-resistant GFCI receptacles and USB outlets.
- Includes color-matched door, which can be easily replaced by a color-matched locking door (XCSLOCK-XX) or a transparent door (XCSCLEAR) (see page 8).
- Interior illuminates when door is open. Door closes automatically to meet white-in-use requirements.
- A/V and communication devices can be added to unwired three-gang versions with addition of A/V-Communication Kit (see page 8). Kit includes two replacement device plates to accommodate:
 - two decorator-style power devices and one decorator style A/V or communication device,
 - two decorator-style power devices and four Wiremold AVIP device plates.
- Uses prewired two- or three-gang pedestal versions for dedicated low voltage applications where power is not required - no A/V-Communication kit needed.

Components Included:

- Top Cap and Pedestal Body
- Required Gasketing
- Power Module (2- or 3-Gang)
- Color-Matched Door
- Mounting Base
- Four (4) L Bolts

Color Options: Black, Bronze, Silver

Power Pedestal Ordering Information

Part Number	20A	20A WR GFCI	4-Port 4.2A USB	Finish
XCSPP2GRU-BK	1	1	1	Black
XCSPP2GRU-BZ	1	1	1	Bronze
XCSPP2GRU-SV	1	1	1	Silver
XCSPP2GRU-BK	2	0	2	Black
XCSPP2GRU-BZ	2	0	2	Bronze
XCSPP2GRU-SV	2	0	2	Silver
XCSPP2GRU-BK	2	2	0	Black
XCSPP2GRU-BZ	2	2	0	Bronze
XCSPP2GRU-SV	2	2	0	Silver
XCSPP2G-BK*	2	0	0	Black
XCSPP2G-BZ*	2	0	0	Bronze
XCSPP2G-SV*	2	0	0	Silver
XCSPP3GRUJ-BK	3	1	2	Black
XCSPP3GRUJ-BZ	3	1	2	Bronze
XCSPP3GRUJ-SV	3	1	2	Silver
XCSPP3GRUJ-BK	3	2	1	Black
XCSPP3GRUJ-BZ	3	2	1	Bronze
XCSPP3GRUJ-SV	3	2	1	Silver
XCSPP3G-BK*	3	0	0	Black
XCSPP3G-BZ*	3	0	0	Bronze
XCSPP3G-SV*	3	0	0	Silver

* Stations with no devices are provided unwired for addition of customized selections.

NOTES
1. SYSTEM INCLUDES LEGRAND POWER PEDESTAL OR APPROVED EQUAL.
2. REFER TO SPEC ELECTRICAL PLANS FOR LOCATION AND QUANTITY INFORMATION.
3. CONTRACT UNIT PRICE SHALL BE MEASURED PER CHARGING STATION (EA) INSTALLED.
4. CONTRACT UNIT PRICE SHALL INCLUDE CHARGING STATION, WIRING, AND OTHER NECESSARY ACCESSORIES FOR COMPLETE INSTALLATION OF CHARGING STATION.

ED17659 - Updated January 2019 - For latest specs visit www.legrand.us/wiremold

CHARGING STATION

N.T.S.

PATTERSON PARK & FRANKLIN STREET IMPROVEMENTS
FRANKLIN STREET
TORRINGTON, CT

REVISIONS

No.	Date	Desc.
1.	04/27/2019	REVISIONS PER CITY COMMENTS
2.	05/01/2019	ISSUED FOR BID
3.	07/24/2019	ADDENDUM #2
4.	07/24/2019	ADDENDUM #2
5.	08/07/2019	ADDENDUM #3

Designed W.E.V.
Drawn W.E.V.
Reviewed
Scale NONE
Project No. 1900284
Date 04/19/2019
CAD File: LP190028401

LIGHTING DETAILS

Sheet No.

ITEM #1008124A 1" POLYVINYL CHLORIDE CONDUIT IN TRENCH (SITE LIGHTING/COMMUNICATIONS)

1" Polyvinyl chloride conduit in trench (site lighting/communications) shall be constructed in accordance with Section 10.08, supplemented as follows:

Description: This item shall consist of furnishing and installing conduit of the size and type specified with necessary fittings, where called for, at locations shown on the plans or as directed by the Engineer and in accordance with these specifications.

Weatherproof GFI receptacles for Charging Stations as indicated on the plans shall be paid for under this item.

Method of Measurement: Conduit will be measured for payment by the actual number of linear feet of the type and size installed and accepted. The measured length shall be from end to end along the centerline through all fittings.

No additional measurement will be made for Weatherproof GFI receptacles for Charging Stations.

Basis of Payment: The work will be paid for at the Contract unit price per linear foot for "1" Polyvinyl chloride conduit." The price shall include all materials required expansion fittings, conduit fittings, locknuts, bonding bushings, bonding wire, hangers, clamps, duct seal, caps, inserts, equipment, tools, labor, and work incidental thereto.

Contract unit price for "1" Polyvinyl chloride conduit" includes Weatherproof GFI receptacles for Charging Stations.

<u>Pay Item</u>	<u>Pay Unit</u>
1" POLYVINYL CHLORIDE CONDUIT IN TRENCH (SITE LIGHTING/COMMUNICATIONS)	L.F.