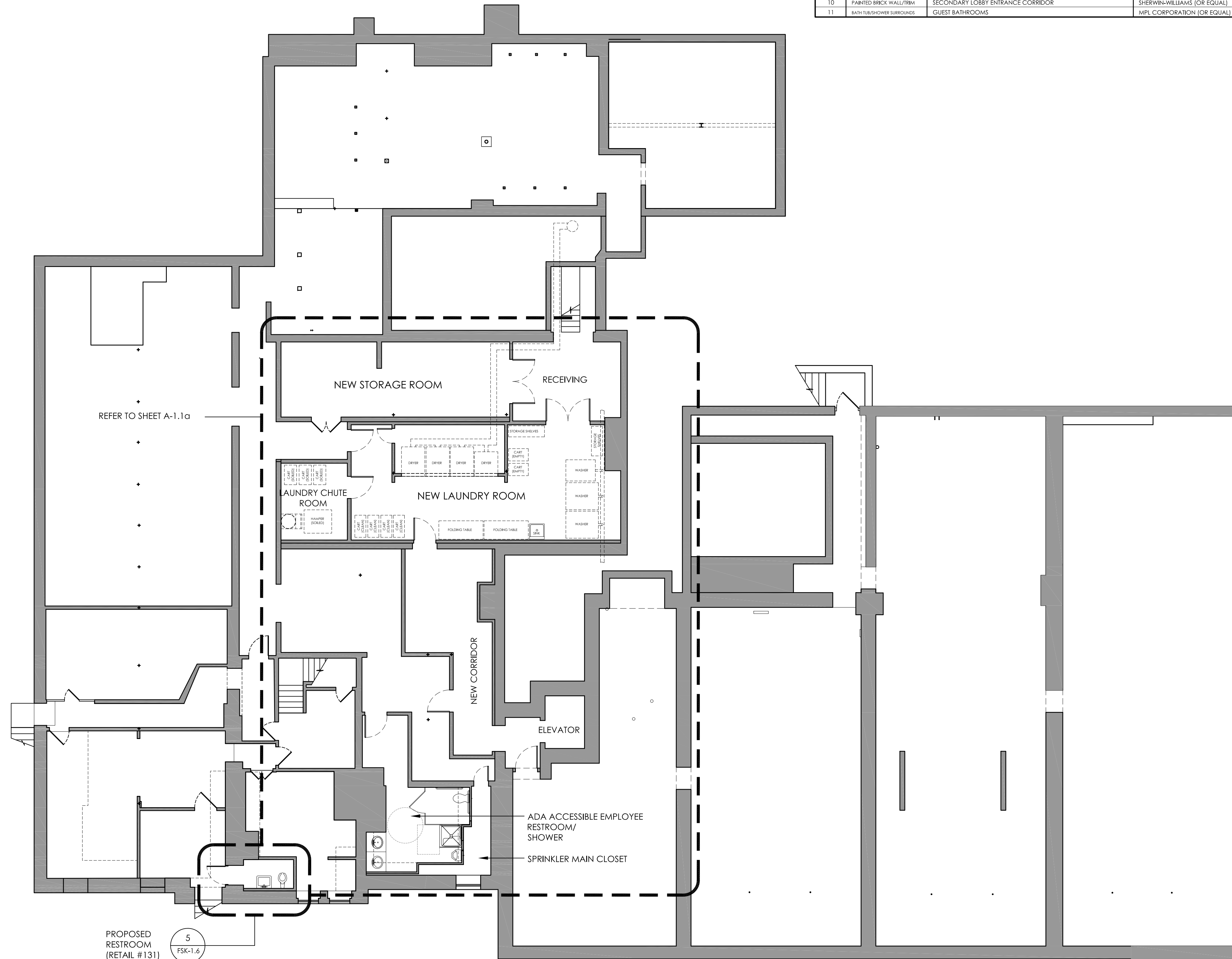


PROPOSED WALL FINISHING SCHEDULE (DRAWINGS A-1.1 THRU A-1.4)

KEY	DESCRIPTION	LOCATION	MANUFACTURER	MODEL NO./PATTERN	REMARKS
1	ALL INTERIOR PAINT				
1	WAINSCOT/WALLPAPER	CORRIDORS; STAIRS; LOBBY	SHERWIN-WILLIAMS (OR EQUAL)	ACRYLIC LATEX	FINISHES: FLAT (CEILING); EGG SHELL (WALLS); SEMI-GLOSS (WOOD TRIM/DOORS)
2	WAINSCOT/WALLPAPER	MEETING ROOM	WALLCOVER: KOROSEAL (OR EQUAL)	VINYL/PATTERN: T.B.D.	CHAIR RAIL/TRIM COLOR: T.B.D.; WAINSCOT COLOR: T.B.D.
3	WAINSCOT/PAINTED DRYWALL	BREAKFAST AREA	SHERWIN-WILLIAMS (OR EQUAL)	ACRYLIC LATEX	CHAIR RAIL/TRIM COLOR: T.B.D.; WAINSCOT COLOR: T.B.D.; WALL COLOR: T.B.D.
4	WALLCOVER/PAINTED TRIM	LOBBY BATHROOMS	WALLCOVER: KOROSEAL (OR EQUAL)	VINYL/PATTERN: T.B.D.	DOOR/WOOD TRIM COLOR: T.B.D.
5	WALLCOVER/PAINTED TRIM	GUEST ROOMS	WALLCOVER: KOROSEAL (OR EQUAL)	VINYL/PATTERN: T.B.D.	DOOR/WOOD TRIM COLOR: T.B.D.
6	WALLCOVER/PAINTED TRIM	GUEST BATHROOMS	WALLCOVER: KOROSEAL (OR EQUAL)	VINYL/PATTERN: T.B.D.	DOOR/WOOD TRIM COLOR: T.B.D.
7	PAINTED DRYWALL/TRIM	OFFICE; CHECK-IN AREA	SHERWIN-WILLIAMS (OR EQUAL)	ACRYLIC LATEX	DOOR/WOOD TRIM COLOR: T.B.D.; WALL COLOR: T.B.D.
8	PAINTED DRYWALL/TRIM	SERVICE AREAS; STORAGE ROOMS/CLOSETS	SHERWIN-WILLIAMS (OR EQUAL)	ACRYLIC LATEX	DOOR/WOOD TRIM COLOR: T.B.D.; WALL COLOR: T.B.D.
9	PAINTED DRYWALL/TRIM	BATHROOMS (RETAIL, KITCHEN, RESTAURANT)	SHERWIN-WILLIAMS (OR EQUAL)	ACRYLIC LATEX	DOOR/WOOD TRIM COLOR: T.B.D.; WALL COLOR: T.B.D.
10	PAINTED BRICK WALL/TRIM	SECONDARY LOBBY ENTRANCE CORRIDOR	SHERWIN-WILLIAMS (OR EQUAL)	ACRYLIC LATEX	DOOR/WOOD TRIM COLOR: T.B.D.; WALL COLOR: T.B.D.
11	BATH FURSHOWER SURROUNDS	GUEST BATHROOMS	MPL CORPORATION (OR EQUAL)	8x8 SIMULATED TILE	CULTURED MARBLE PANELS: COLOR: T.B.D.



DOOR SCHEDULE (DRAWINGS A-1.1 THRU A-1.4)

KEY	DOOR TYPE	DOOR FINISH	DOOR FRAME	HARDWARE	FIRE RATING	REMARKS
TYPE 'A'	DOUBLE HOLLOW METAL	FACTORY PRIMED/FIELD PAINTED	METAL FRAME	STANDARD KEYPED LEVER HANDLE TRIM: CHROME SATIN FINISH	1 HOUR	RIGHT PANEL W/ HEAD & FOOT BOLT; LEFT PANEL W/ ASTRAGAL
TYPE 'B'	HOLLOW METAL	FACTORY PRIMED/FIELD PAINTED	METAL FRAME	STANDARD KEYPED LEVER HANDLE TRIM: CHROME SATIN FINISH	1 HOUR	SELF-CLOSING
TYPE 'C'	HOLLOW METAL	FACTORY PRIMED/FIELD PAINTED	METAL FRAME	STANDARD KEYPED LEVER HANDLE TRIM: CHROME SATIN FINISH	1 HOUR	SELF-CLOSING; 12 x 24 BOTTOM VENTILATION LOUVER
TYPE 'D'	HOLLOW METAL	FACTORY PRIMED/FIELD PAINTED	METAL FRAME	EXIT PANIC BAR W/ KEYPED LEVER TRIM: SATIN STAINLESS STEEL FINISH	1 HOUR	SELF-CLOSING; 24 x 30 VISION PANEL W/ WIRED GLASS
TYPE 'E'	RAISED-PANEL SOLID CORE WOOD	PRIMED MDF/FIELD PAINTED	METAL FRAME	ELECTRONIC MORTISE LOCKSET W/ MAGSTRIPE CARD READER & 'ADA' LEVER TRIM	20 MINUTE	SELF-CLOSING; RAISED-PANEL LAYOUT TO MATCH EXISTING
TYPE 'F'	SOLID CORE WOOD W/ DIVIDED LITES	PRIMED MDF/FIELD PAINTED	METAL FRAME	STANDARD KEYPED 'ADA' LEVER HANDLE TRIM: CHROME SATIN FINISH	N/A	SELF-CLOSING; 15 DIVIDED LITES FULL DOOR
TYPE 'G'	RAISED-PANEL SOLID CORE WOOD	PRIMED MDF/FIELD PAINTED	WOOD FRAME	STANDARD KEYPED (BATHROOM) 'ADA' LEVER HANDLE TRIM: CHROME SATIN FINISH	N/A	BATHROOMS KEYPED ONLY; RAISED PANEL TO MATCH G.R. DOOR
TYPE 'H'	RAISED-PANEL SOLID CORE WOOD	PRIMED MDF/FIELD PAINTED	METAL FRAME	STANDARD KEYPED 'ADA' LEVER HANDLE TRIM: CHROME SATIN FINISH	N/A	SELF-CLOSING; RAISED-PANEL LAYOUT TO MATCH EXISTING
TYPE 'J'	SOLID CORE WOOD KITCHEN SWING	STAINLESS STEEL	METAL FRAME	N/A	N/A	180° SWING SELF-CLOSING; WITH ACRYLIC WINDOW
TYPE 'K'	STANLEY DURA-GUIDE 2000 SLIDING	ALUMINUM/GLASS	METAL FRAME	STANLEY SU-100 MOTION SENSOR	1 HOUR	DOUBLE SLIDING DOORS W/ EMERGENCY BREAK-OUT PANELS

NOTES:
 1. DOORS INTO EXITWAYS SHALL HAVE GLASS LITES FOR SAFETY.
 2. DOORS TO BE 2'-10" WIDE MINIMUM (32" CLEAR PER 2012 IBC FOR NEW CONSTRUCTION), UNLESS OTHERWISE NOTED.
 3. EXISTING DOOR WIDTHS TO REMAIN AS IS (PER SECTION 1203.3 OF 2012 IBC), UNLESS OTHERWISE NOTED.

1
A-1.1 PROPOSED BASEMENT PLAN

SCALE: 1/8"=1'-0"

SEALED

AEFA
 Allied Engineering Assoc. Inc.
 95 Main St., 3rd Fl. East
 Torrington, CT 06018
 P.O. Box 7700 Torrington, CT 06018
 860-824-1400 860-824-1401 fax
 aea.george@gmail.com

REVISIONS
 NUMBER - DESCRIPTION - DATE - INITIAL

HAMPTON INN PROPERTY IMPROVEMENT
 PROPOSED BASEMENT PLAN
 PREPARED FOR:
 YANKEE PEDLAR INN (JAYSON HOSPITALITY LLC)
 93 MAIN STREET
 TORRINGTON, CT

SCALE: 1/8"=1'-0"
 FILE NAME: 1034-ARCH 1
 DATE: 7/10/2023
 ISSUED FOR: PERMITTING

PROJECT NO. 1034

DRAWING NO. A-1.1