


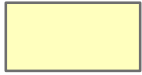
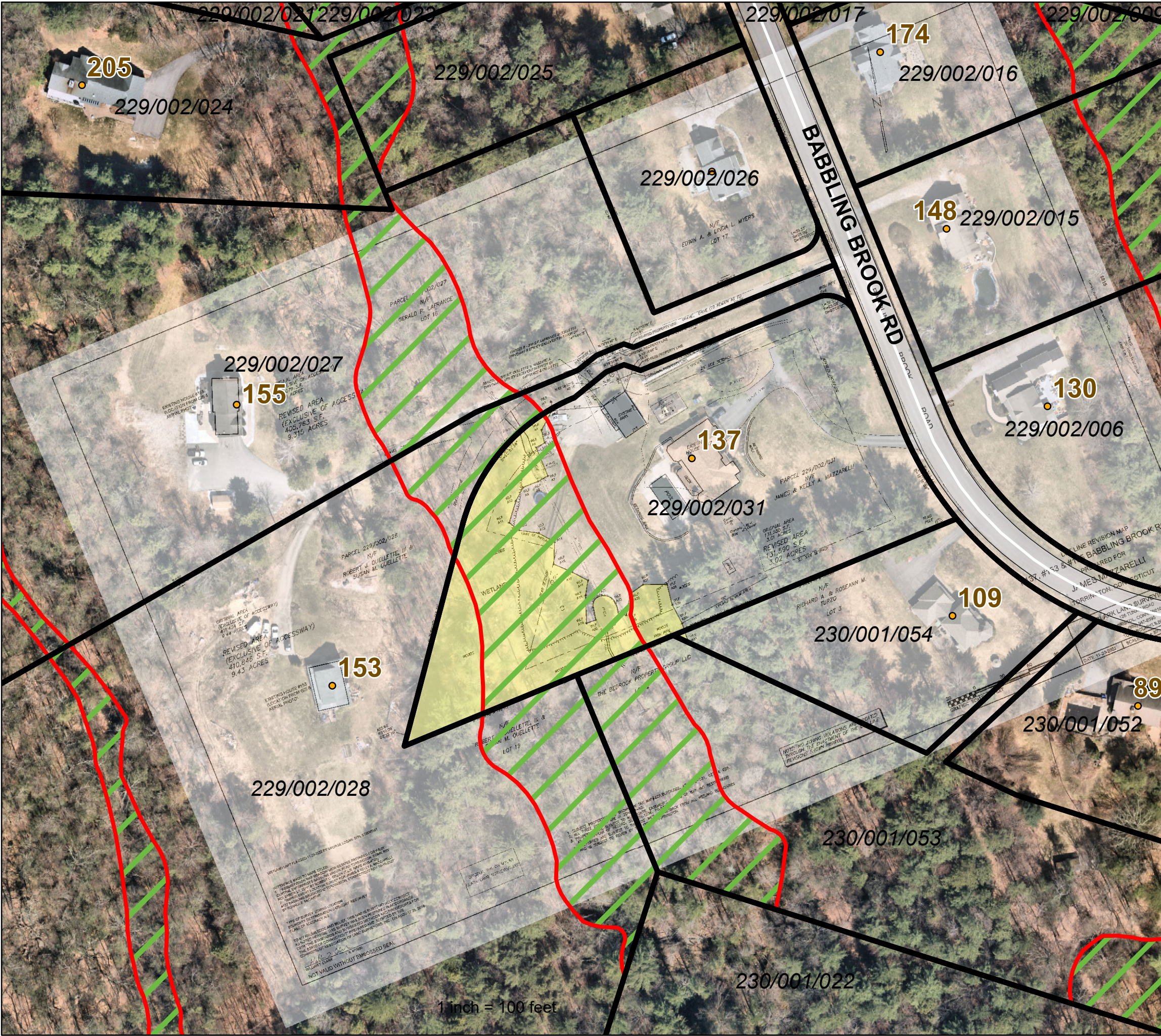
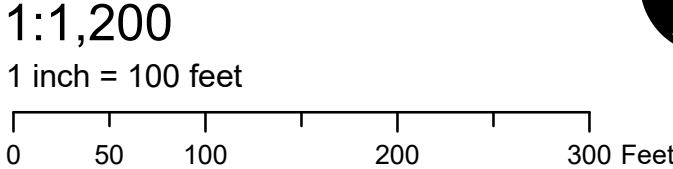


# Comparison of Surveyed Wetlands from 1989 and 2022 on Parcel 229/002/031 137 Babbling Brook Rd Torrington, CT

## Legend

-  Address Points
-  Assessor Parcels
-  Surveyed Wetlands -- (for parcel 229/002/031, these are taken from Town Clerk Map 3985, aka, Plot Plan for Meadow View Estates, Inc., Pronovost Engineering, Waterbury, CT, May 23, 1989)
-  Surveyed Wetlands As Shown on Town Clerk Map 5815 in 2022

Notes:  
 -- Georeferenced Town Clerk Map 5815 is shown superimposed  
 -- Aerial Photo from Nearmap, April 2023



1 inch = 100 feet