

NEW 3,200 SF BUILDING PAD

PROPOSED INTERCONNECT

NEW 6,000 S.F. BUILDING ADDITION TO PETCO

NEW 9,536 SF BUILDING ADDITION TO WALMART

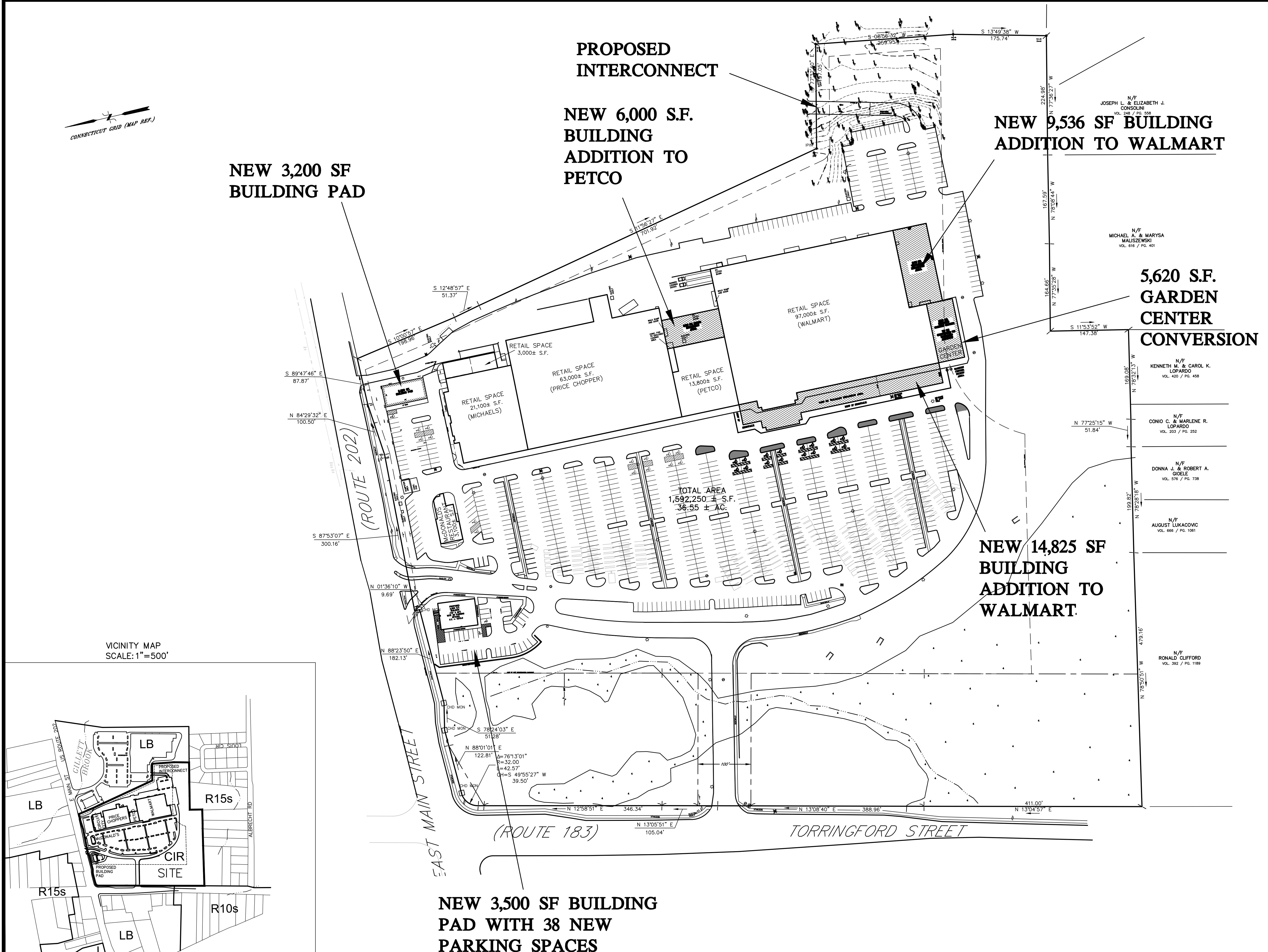
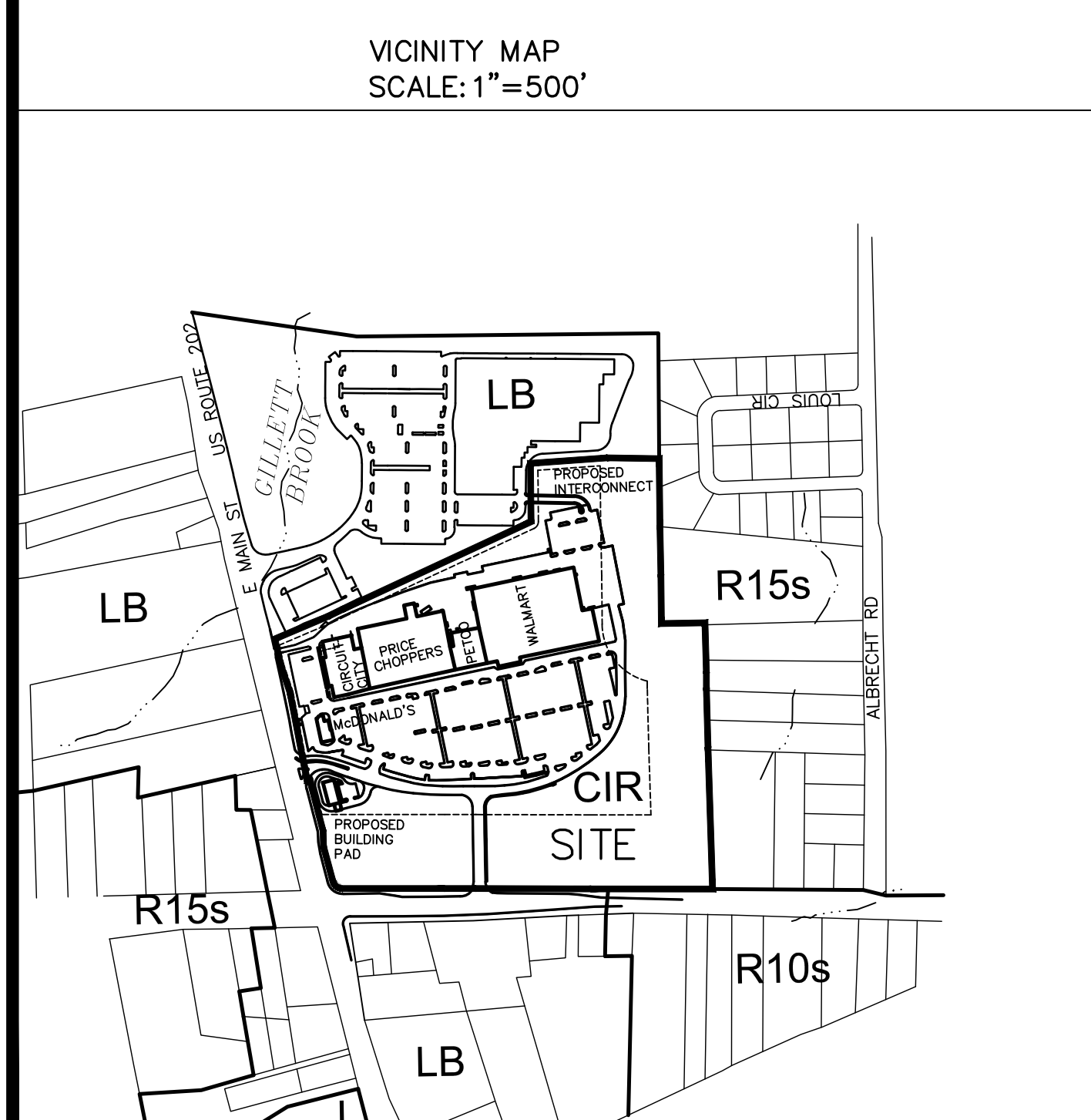
5,620 S.F. GARDEN CENTER CONVERSION

NEW 14,825 SF BUILDING ADDITION TO WALMART

NEW 3,500 SF BUILDING PAD WITH 38 NEW PARKING SPACES

LEGEND

PROPERTY LINE	—
EXISTING MONUMENT	□
EXISTING IRON PIN OR PIPE	○
UTILITY POLE W/ANCHOR	⊥
WATERCOURSE	—
INLAND WETLANDS	▨
CATCH BASIN	⊞
WATER VALVE	⊕
LIGHT POST	⊙
FIRE HYDRANT	⊗
FIRE HYDRANT	⊗
MANHOLE	⊙
LIGHT POLE	⊙
SANITARY SEWER LINE	—



SCHEMATIC SITE PLAN
TORRINGTON FAIR SHOPPING PLAZA
EAST MAIN STREET (ROUTE 202)
TORRINGTON, CONNECTICUT

1"=80 FT

Hrica Associates LLC
Engineers Surveyors

Kenneth S. Hrica, PE, RLS
82 West Street
P.O. Box 1981
Litchfield, Connecticut 06759

860-567-2112 (business)
860-567-0491 (toll-free)
e-mail: hricassoc@optonline.net

DATE: 03/26/2020	MAP #: 0099
SCALE: 1"=80 ft.	SHEET #: A1
DRAWING: 060099	DRAWN BY: ALL
PROJECT #: 06-0099	CHECKED BY: KSH