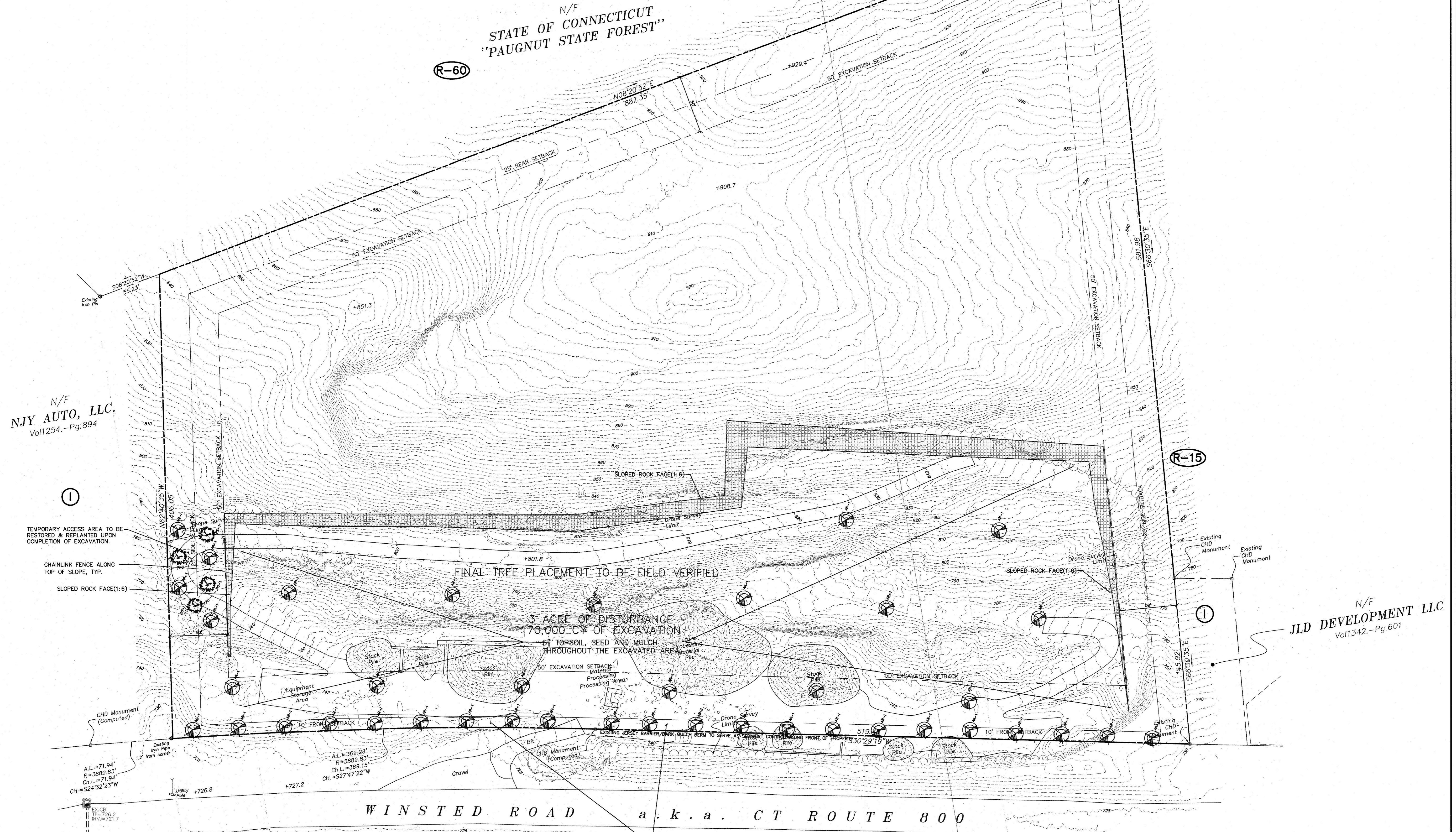


PLANT LEGEND

AR	40	RED SUNSET MAPLE	ACER RUBRUM 'FRANKSRED'	3"-3 1/2" CAL.
PS	4	EASTERN WHITE PINE	PINUS STROBUS	8'-10' HT.

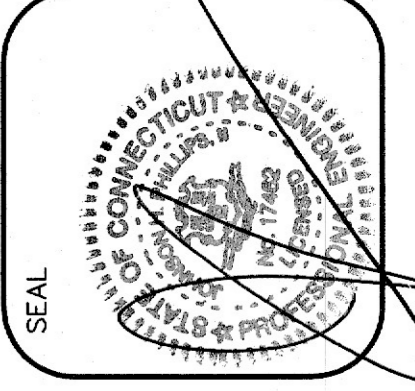
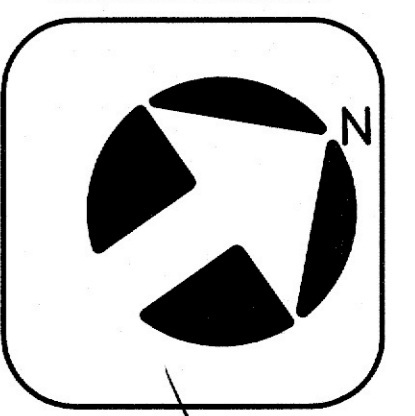
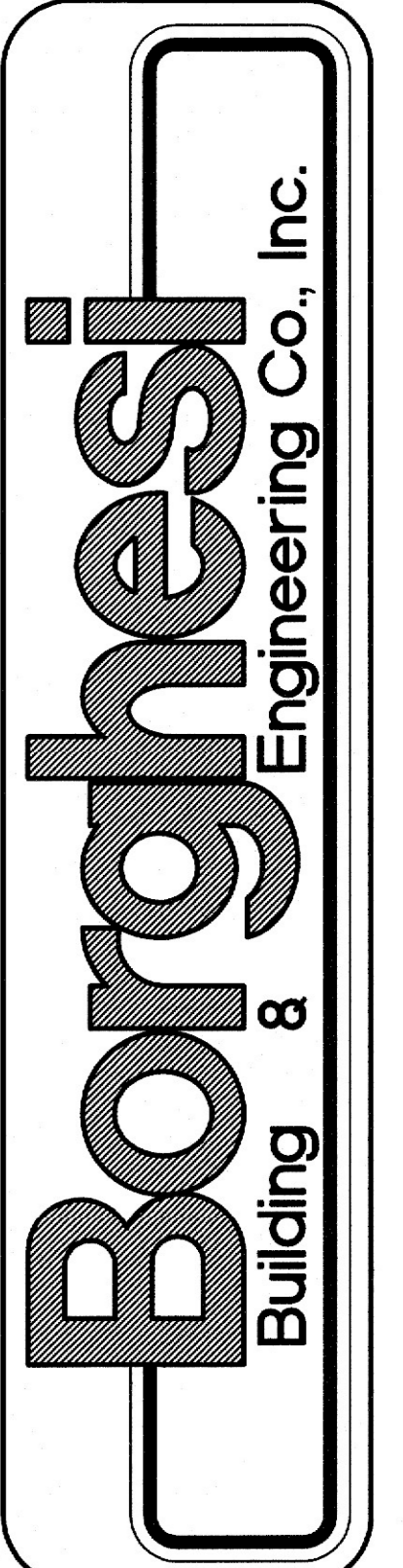
- PLANTING NOTES:**
- 1) ALL PLANT MATERIALS SHALL CONFORM TO THE GUIDELINES ESTABLISHED BY THE AMERICAN NURSERY & LANDSCAPE ASSOCIATION.
 - 2) PLANTING SOIL MIX SHALL CONSIST OF LOAM THOROUGHLY INCORPORATED WITH COMPOST PROPORTIONED 5 CY:1 CY ALONG WITH AN ORGANIC STARTER FERTILIZER AT RECOMMENDED RATES.
 - 3) MULCH FOR PLANTING BEDS & TREE SAUCERS TO BE AGED, DOUBLE GROUND PINE BARK APPLIED AT A DEPTH OF THREE (3) INCHES.
 - 4) ALL OTHER DISTURBED AREAS, NOT COVERED BY BUILDINGS, PAVEMENT, ETC., SHALL BE GRADED & SEED TO LAWN, MEADOW, WILDFLOWER, ETC., AS DIRECTED BY THE OWNER.
 - 5) LANDSCAPE CONTRACTOR SHALL GUARANTEE ALL PLANT MATERIAL FOR ONE (1) FULL YEAR FROM DATE OF ACCEPTANCE. PROPER LANDSCAPE MAINTENANCE SHALL BE THE RESPONSIBILITY OF THE OWNER.
 - 6) SHADE TREES SHALL HAVE A BRANCHING HEIGHT OF FIVE (5') MINIMUM.



RESTORATION PLAN

SCALE: 1"=40'

© BORGHESI BUILDING & ENGINEERING CO., INC.
COPYRIGHT. ALL RIGHTS RESERVED. NO PART OF
THIS WORK MAY BE USED, REPRODUCED, DISTRIBUTED,
DISPLAYED, OR OTHERWISE COMMUNICATED IN ANY FORM
OR BY ANY OTHER MEANS WITHOUT THE PRIOR, WRITTEN
CONSENT OF BORGHESI BUILDING & ENGINEERING CO., INC.



REVISIONS
4-5-24 REVISED TO ADDRESS CITY STAFF COMMENTS

PROJECT
AJ RESOURCES LLC
WINSTED ROAD, TORRINGTON, CT

DRAWN BY
D.A.N.

APPROVED BY
S.C.S. NOTED

DATE
2/25/24

2155 EAST MAIN STREET TORRINGTON, CT 06790
830-482-7613/WEB: WWW.BORGHESIBUILDING.COM

SHEET NO.
SP2