

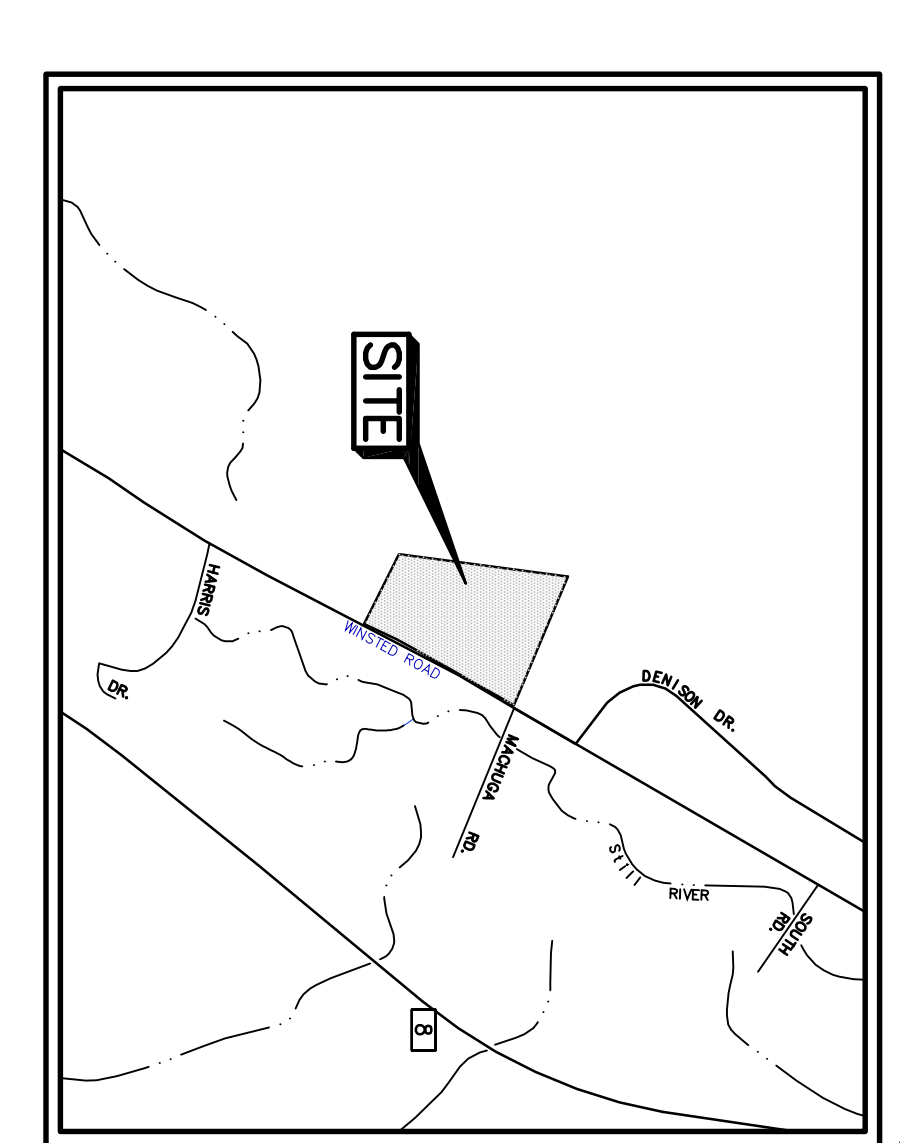
NOTES:

- 1) MAP REFERENCES:
 - A) DRAWING ENTITLED "TOPOGRAPHIC SURVEY"
 - B) DRAWING ENTITLED "TOPOGRAPHIC SURVEY"
 - C) DRAWING ENTITLED "TOPOGRAPHIC SURVEY"
 - D) DRAWING ENTITLED "TOPOGRAPHIC SURVEY"
 - E) DRAWING ENTITLED "TOPOGRAPHIC SURVEY"
 - F) DRAWING ENTITLED "TOPOGRAPHIC SURVEY"
 - G) DRAWING ENTITLED "TOPOGRAPHIC SURVEY"
 - H) DRAWING ENTITLED "TOPOGRAPHIC SURVEY"
 - I) DRAWING ENTITLED "TOPOGRAPHIC SURVEY"
 - J) DRAWING ENTITLED "TOPOGRAPHIC SURVEY"
 - K) DRAWING ENTITLED "TOPOGRAPHIC SURVEY"
 - L) DRAWING ENTITLED "TOPOGRAPHIC SURVEY"
 - M) DRAWING ENTITLED "TOPOGRAPHIC SURVEY"
 - N) DRAWING ENTITLED "TOPOGRAPHIC SURVEY"
 - O) DRAWING ENTITLED "TOPOGRAPHIC SURVEY"
 - P) DRAWING ENTITLED "TOPOGRAPHIC SURVEY"
 - Q) DRAWING ENTITLED "TOPOGRAPHIC SURVEY"
 - R) DRAWING ENTITLED "TOPOGRAPHIC SURVEY"
 - S) DRAWING ENTITLED "TOPOGRAPHIC SURVEY"
 - T) DRAWING ENTITLED "TOPOGRAPHIC SURVEY"
 - U) DRAWING ENTITLED "TOPOGRAPHIC SURVEY"
 - V) DRAWING ENTITLED "TOPOGRAPHIC SURVEY"
 - W) DRAWING ENTITLED "TOPOGRAPHIC SURVEY"
 - X) DRAWING ENTITLED "TOPOGRAPHIC SURVEY"
 - Y) DRAWING ENTITLED "TOPOGRAPHIC SURVEY"
 - Z) DRAWING ENTITLED "TOPOGRAPHIC SURVEY"
- 2) OWNER/APPLICANT:
 - 1) WINDSTAR LLC
 - 2) WINDSTAR LLC
 - 3) WINDSTAR LLC
 - 4) WINDSTAR LLC
 - 5) WINDSTAR LLC
 - 6) WINDSTAR LLC
 - 7) WINDSTAR LLC
 - 8) WINDSTAR LLC
 - 9) WINDSTAR LLC
 - 10) WINDSTAR LLC
 - 11) WINDSTAR LLC
 - 12) WINDSTAR LLC
 - 13) WINDSTAR LLC
 - 14) WINDSTAR LLC
 - 15) WINDSTAR LLC
 - 16) WINDSTAR LLC
 - 17) WINDSTAR LLC
 - 18) WINDSTAR LLC
 - 19) WINDSTAR LLC
 - 20) WINDSTAR LLC
 - 21) WINDSTAR LLC
 - 22) WINDSTAR LLC
 - 23) WINDSTAR LLC
 - 24) WINDSTAR LLC
 - 25) WINDSTAR LLC
 - 26) WINDSTAR LLC
 - 27) WINDSTAR LLC
 - 28) WINDSTAR LLC
 - 29) WINDSTAR LLC
 - 30) WINDSTAR LLC
 - 31) WINDSTAR LLC
 - 32) WINDSTAR LLC
 - 33) WINDSTAR LLC
 - 34) WINDSTAR LLC
 - 35) WINDSTAR LLC
 - 36) WINDSTAR LLC
 - 37) WINDSTAR LLC
 - 38) WINDSTAR LLC
 - 39) WINDSTAR LLC
 - 40) WINDSTAR LLC
 - 41) WINDSTAR LLC
 - 42) WINDSTAR LLC
 - 43) WINDSTAR LLC
 - 44) WINDSTAR LLC
 - 45) WINDSTAR LLC
 - 46) WINDSTAR LLC
 - 47) WINDSTAR LLC
 - 48) WINDSTAR LLC
 - 49) WINDSTAR LLC
 - 50) WINDSTAR LLC
 - 51) WINDSTAR LLC
 - 52) WINDSTAR LLC
 - 53) WINDSTAR LLC
 - 54) WINDSTAR LLC
 - 55) WINDSTAR LLC
 - 56) WINDSTAR LLC
 - 57) WINDSTAR LLC
 - 58) WINDSTAR LLC
 - 59) WINDSTAR LLC
 - 60) WINDSTAR LLC
 - 61) WINDSTAR LLC
 - 62) WINDSTAR LLC
 - 63) WINDSTAR LLC
 - 64) WINDSTAR LLC
 - 65) WINDSTAR LLC
 - 66) WINDSTAR LLC
 - 67) WINDSTAR LLC
 - 68) WINDSTAR LLC
 - 69) WINDSTAR LLC
 - 70) WINDSTAR LLC
 - 71) WINDSTAR LLC
 - 72) WINDSTAR LLC
 - 73) WINDSTAR LLC
 - 74) WINDSTAR LLC
 - 75) WINDSTAR LLC
 - 76) WINDSTAR LLC
 - 77) WINDSTAR LLC
 - 78) WINDSTAR LLC
 - 79) WINDSTAR LLC
 - 80) WINDSTAR LLC
 - 81) WINDSTAR LLC
 - 82) WINDSTAR LLC
 - 83) WINDSTAR LLC
 - 84) WINDSTAR LLC
 - 85) WINDSTAR LLC
 - 86) WINDSTAR LLC
 - 87) WINDSTAR LLC
 - 88) WINDSTAR LLC
 - 89) WINDSTAR LLC
 - 90) WINDSTAR LLC
 - 91) WINDSTAR LLC
 - 92) WINDSTAR LLC
 - 93) WINDSTAR LLC
 - 94) WINDSTAR LLC
 - 95) WINDSTAR LLC
 - 96) WINDSTAR LLC
 - 97) WINDSTAR LLC
 - 98) WINDSTAR LLC
 - 99) WINDSTAR LLC
 - 100) WINDSTAR LLC
- 3) REFER TO THE FOLLOWING DRAWINGS PREPARED BY BORGHESI BUILDING & ENGINEERING CO., INC. FOR OTHER PERTINENT INFORMATION:
 - SP1 LONG-TERM GRADING PLAN
 - SP2 EROSION CONTROL NOTES & DETAILS
 - SP3 EROSION CONTROL NOTES & DETAILS
- 4) PROPERTY IS IN AN I ZONE. M/B/L 244/001/007 AREA = 11.17 ACRES

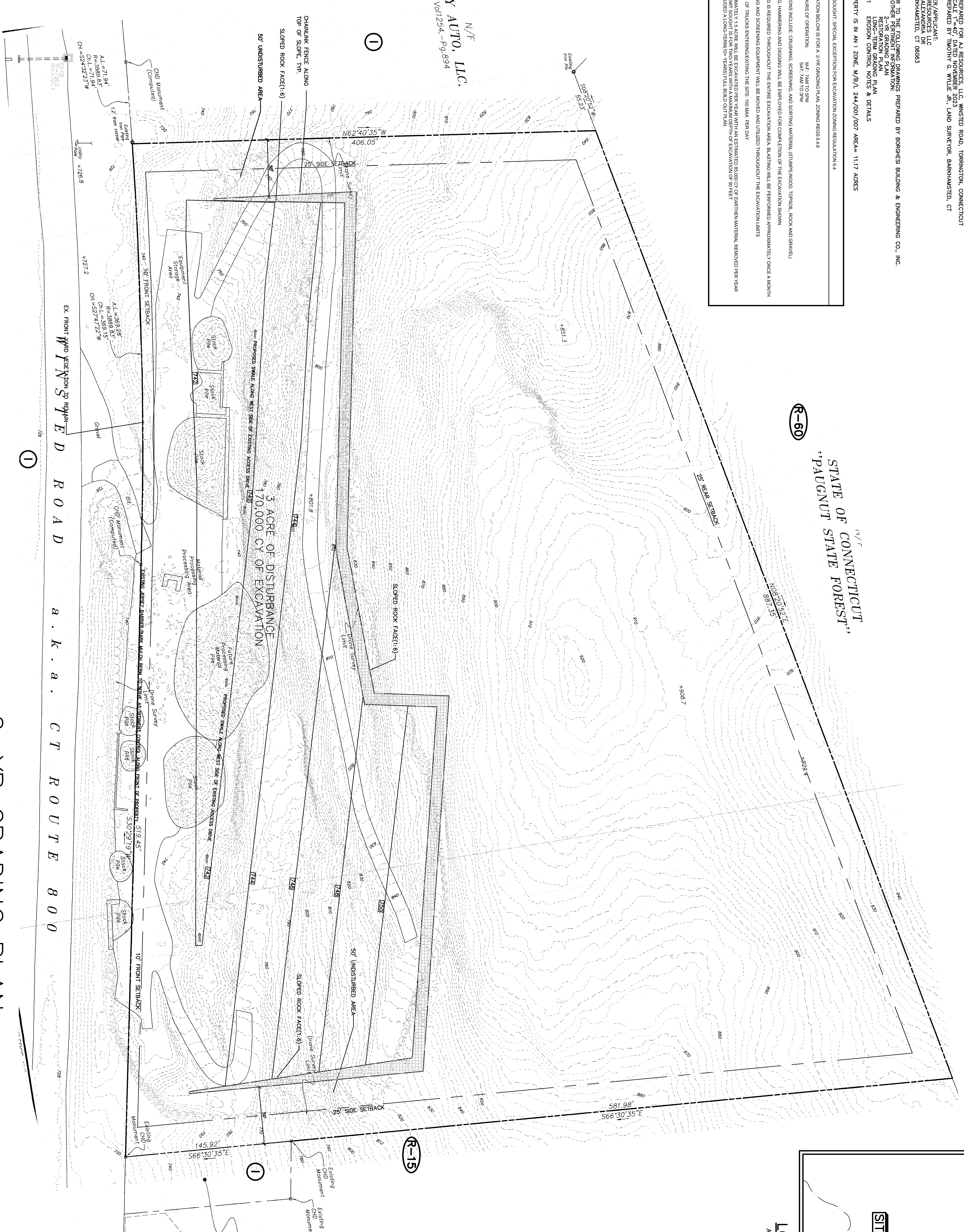
N/F
STATE OF CONNECTICUT
"PAUGNUT STATE FOREST"

R-60

N/F
AJ AUTO, LLC.
Vol1254-Pg.894



LOCATION MAP
APPROX. SCALE: 1"=1000'



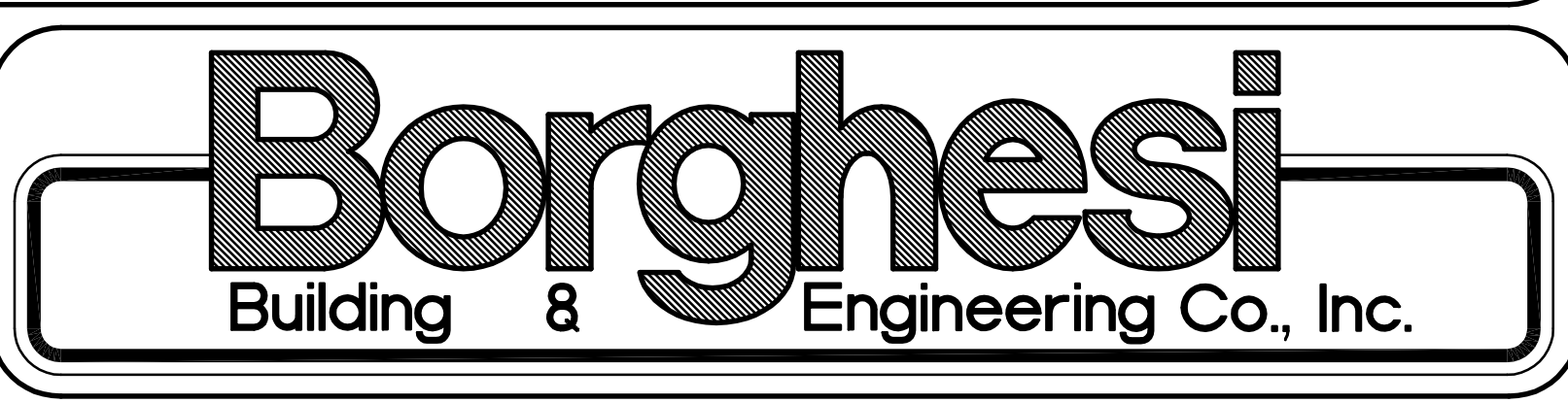
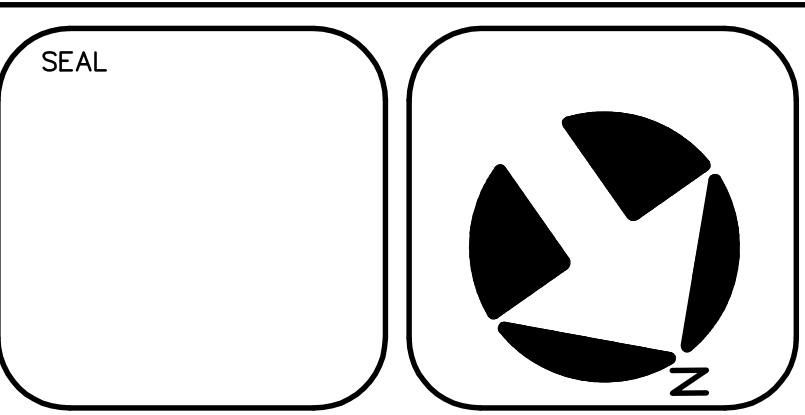
2-YR GRADING PLAN

SCALE: 1"=40'

PROJECT
AJ RESOURCES LLC
WINSTED ROAD, TORRINGTON, CT

DATE	2/5/24	SCALE	AS NOTED
DRAWN BY		APPROVED BY	
D.A.N.		J.H.P.	
2155 EAST MAIN STREET TORRINGTON, CT 06790			
860-482-7613; WEB: WWW.BORGHESIBUILDING.COM			

REVISIONS	SEAL



SHEET NO.
SP1

© BORGHESI BUILDING & ENGINEERING CO., INC.
THIS WORK MAY BE USED, REPRODUCED, OR DISTRIBUTED
ONLY BY THE CLIENT WHOSE PROJECT IT SERVES. ALL OTHER
RIGHTS RESERVED. BORGHESI BUILDING & ENGINEERING CO., INC.