

Dunkin' | 595 Winsted Road, Torrington CT 06790 | Design Development | June 26, 2023





Exclusive Brand Identity Warranty Program

Poyant is the only Approved DBI Brands Vendor to provide an Exclusive 3 Year Comprehensive Labor and Material Warranty on all aspects of the Dunkin' Donuts and Baskin Robbins Brand Package.

Our Warranty to you is supported by the largest installation and service fleet in New England as well as a reliable, qualified national network.

Poyant's Exclusive 3 Year Warranty Program for DBI includes:

Comprehensive Warranty including all labor and material and covers the following:

- Construction and framework of your displays
- Paint finish against peeling and noticeable fading of acrylic polyurethane finishes
- Polycarbonate G.E. Lexan faces are guaranteed against breakage
- All internal lighting components, electrical system, LED's and power supplies
- Steel support structures

Factory Trained Service Technicians anywhere in New England

For shipped sign product warranty covers sign product only

Customer _____

Location _____

Install Date _____

_____ Poyant _____ Date

Excludes "Acts of God", Hurricanes, Unusual Flooding, and Fire.

Poyant
Building Your Brand

Project: 22755
Dunkin'

Sales: Bill Gavigan
Date: 6.26.23
Designer: RMA

Note:
This is an original unpublished drawing created by Poyant Signs, Inc. It is submitted for your personal use in connection with a project being planned for you by Poyant Signs, Inc. It is not to be shown to anyone outside your organization, nor is it to be reproduced, copied or exhibited in any fashion until transferred.

Revisions:
8.29.23 RMA (Tier 2) Updated Standards



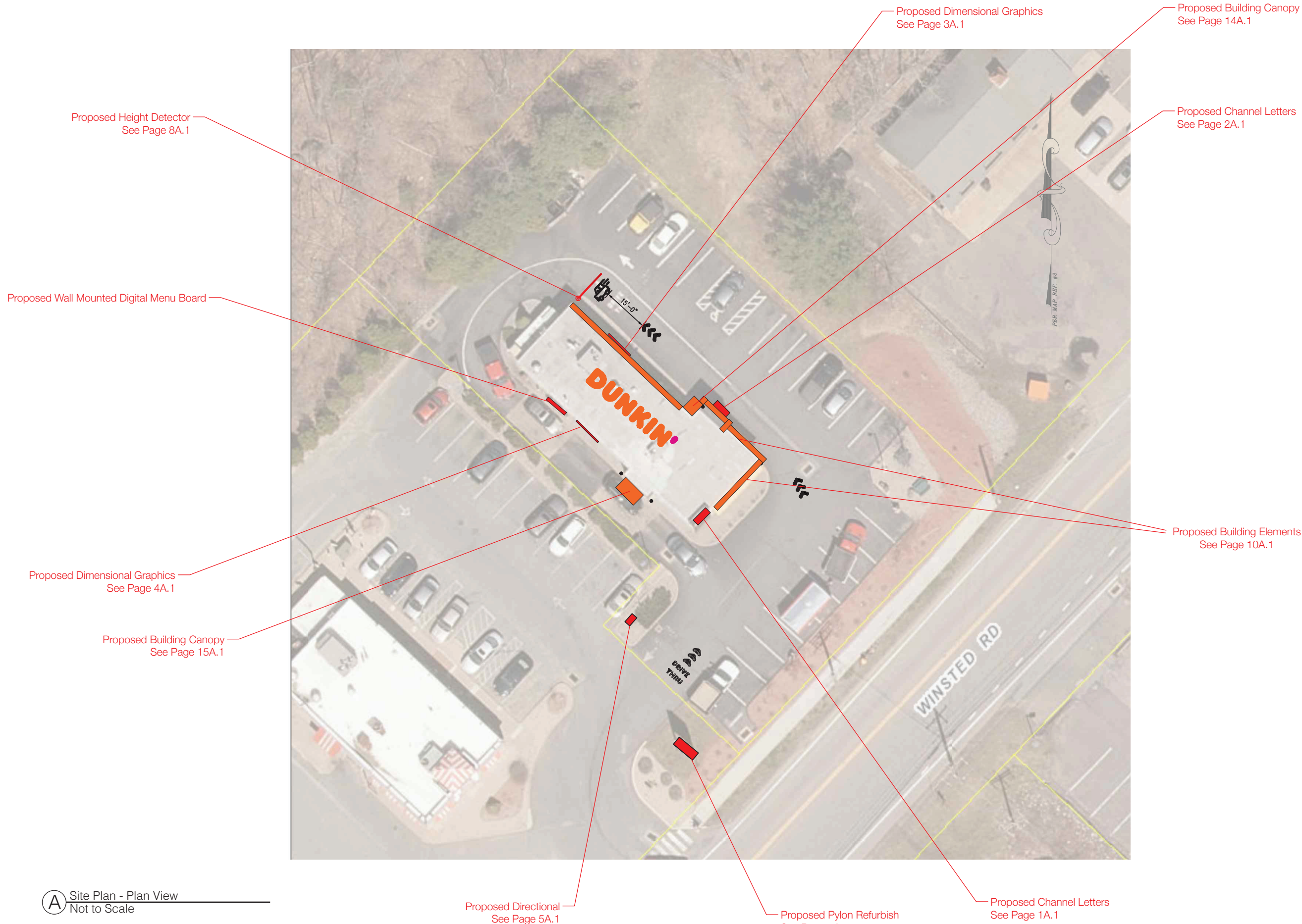
This sign is intended to be installed in accordance with the requirements of Article 600 of the National Electrical Code and / or other applicable local codes. This includes proper grounding and bonding of the sign.

Approved By:

Bill Gavigan

Date:

Site Plan



A Site Plan - Plan View
Not to Scale

Proposed Directional
See Page 5A.1

Proposed Pylon Refurbish
See Page 6A.1

Proposed Channel Letters
See Page 1A.1

Proposed Dimensional Graphics
See Page 3A.1

Proposed Building Canopy
See Page 14A.1

Proposed Channel Letters
See Page 2A.1

Proposed Height Detector
See Page 8A.1

Proposed Wall Mounted Digital Menu Board

Proposed Dimensional Graphics
See Page 4A.1

Proposed Building Canopy
See Page 15A.1


Proposed Building Elements
See Page 10A.1

Project: 22755
Dunkin'

Sales: Bill Gavigan
Date: 6.26.23
Designer: RMA

Note:
This is an original unpublished drawing created by Poyant Signs, Inc. It is submitted for your personal use in connection with a project being planned for you by Poyant Signs, Inc. It is not to be shown to anyone outside your organization, nor is it to be reproduced, copied or exhibited in any fashion until transferred.

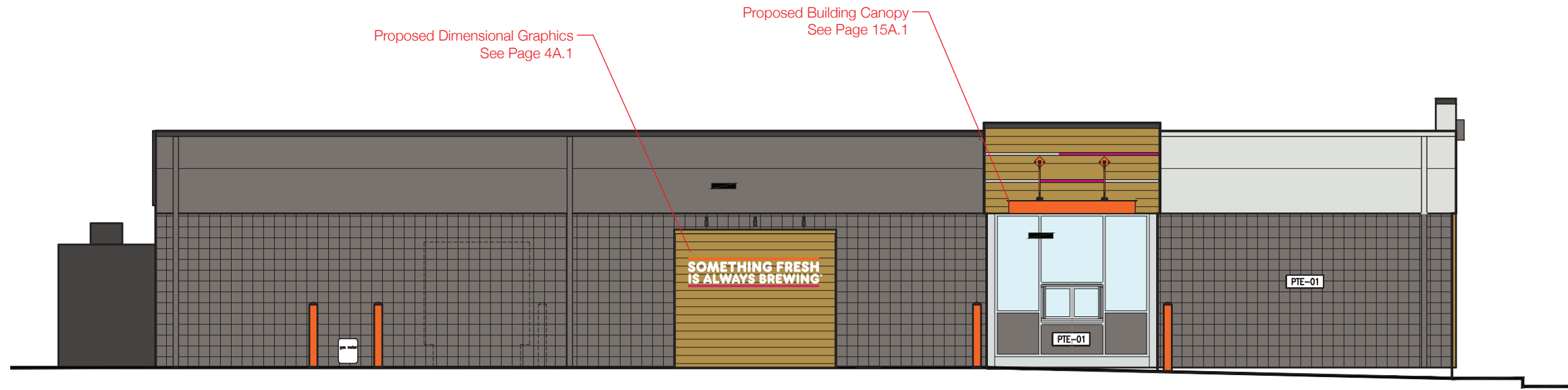
Revisions:
8.29.23 RMA (Tier 2) Updated Standards

 This sign is intended to be installed in accordance with the requirements of Article 600 of the National Electrical Code and / or other applicable local codes. This includes proper grounding and bonding of the sign.

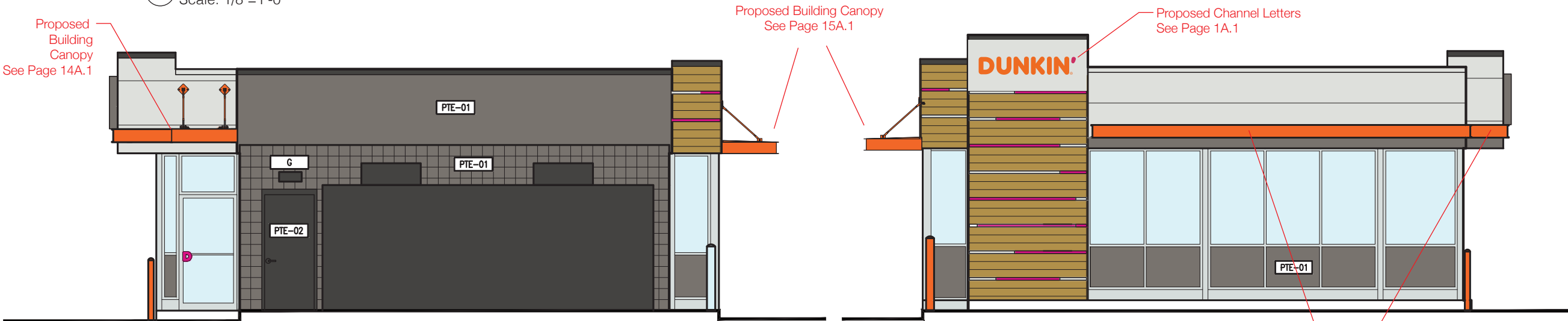
Approved By:
Bill Gavigan
Date:

Elevations

Option A



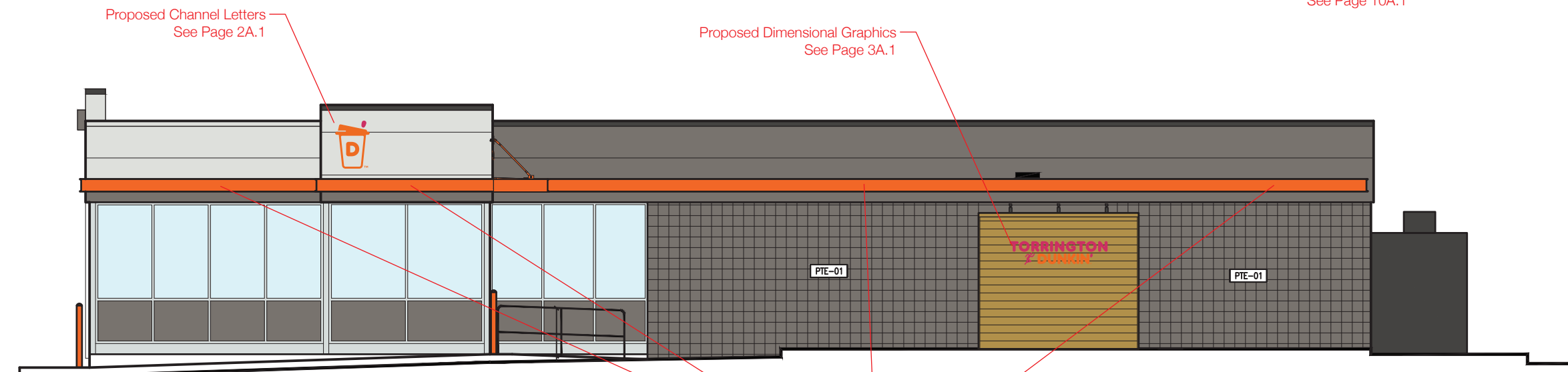
A Proposed Left Elevation
Scale: 1/8"=1'-0"



B Proposed Rear Elevation
Scale: 1/8"=1'-0"

C Proposed Front Elevation
Scale: 1/8"=1'-0"

Proposed Building Elements
See Page 10A.1

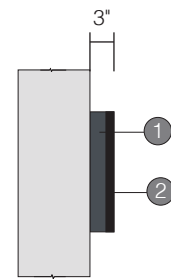


D Proposed Right Elevation
Scale: 1/8"=1'-0"

Proposed Building Elements
See Page 10A.1

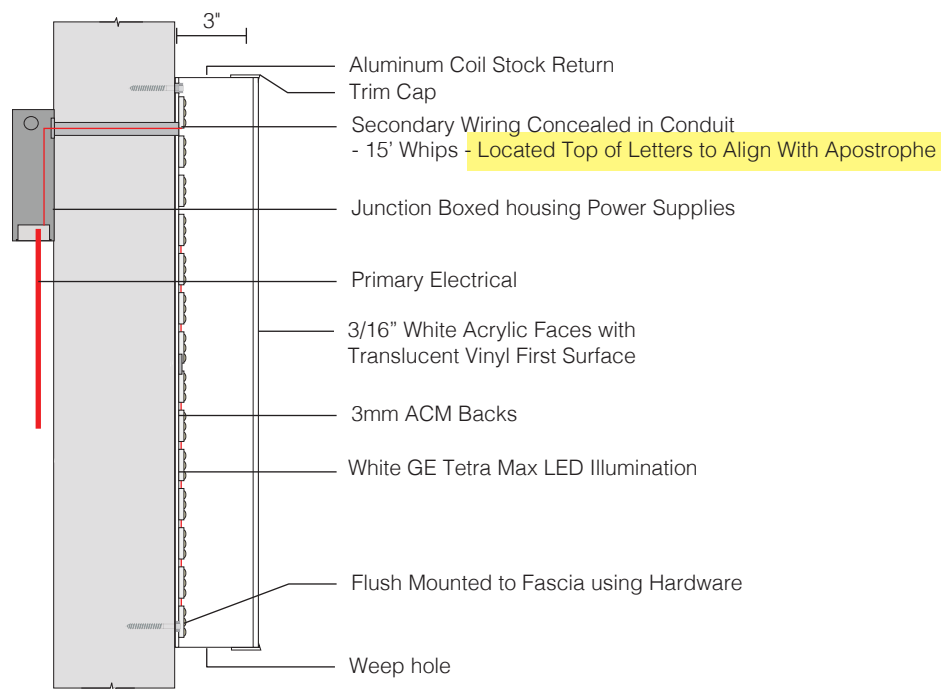


A Sign Elevation - Front View
Scale: 1/2"=1'-0"



B Sign Elevation - Side View
Scale: 1/2"=1'-0"

Sign Code: DD-VIS22-BS-01-15



C Sign Elevation - Side Section View
Not to Scale

Specifications

Qty = 1

8.41 Sq Ft

Face Lit Channel Letters

- Flush mount to fascia using hardware

Provided By Others - All below to be provided by others

- 120V Primary electrical brought to sign location
- Primary electrical connection by others

Colors Specifications

- 1** Coil Stock
Dark Gray #119; Gloss Finish
Returns
- 2** Trim Cap
1" Jewelite Bronze 313
- 3** Translucent Vinyl
Dunkin' Orange; 3M 3M 3630-3202
1st Surface Application
- 4** Translucent Vinyl
Dunkin' Pink; 3M 3630-1511
1st Surface Application
- 5** Digital Print
(Qty: 1) 2 1/4" Dia
Controltac Opaque Digital Print
1st Surface Application
 PMS 3564C
- 6** Material
1/2" White PVC
Registration Mark



125 Samuel Barnet Boulevard
New Bedford, MA 02745
800.544.0961 | poyantsigns.com



595 Winsted Road,
Torrington CT 06790

Project: 22755
Dunkin'

Sales: Bill Gavigan
Date: 6.26.23
Designer: RMA

Note:
This is an original unpublished drawing created by Poyant Signs, Inc. It is submitted for your personal use in connection with a project being planned for you by Poyant Signs, Inc. It is not to be shown to anyone outside your organization, nor is it to be reproduced, copied or exhibited in any fashion until transferred.

Revisions:
8.29.23 RMA (Tier 2) Updated Standards

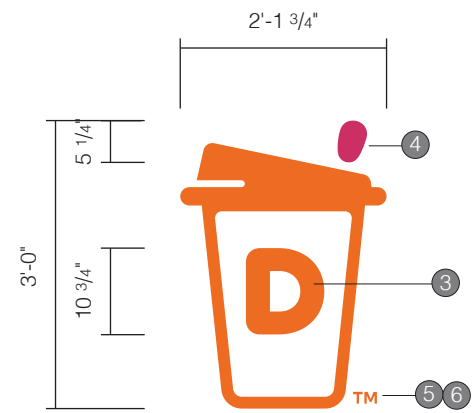
This sign is intended to be installed in accordance with the requirements of Article 600 of the National Electrical Code and / or other applicable local codes. This includes proper grounding and bonding of the sign.

Approved By:
Bill Gavigan

Date:

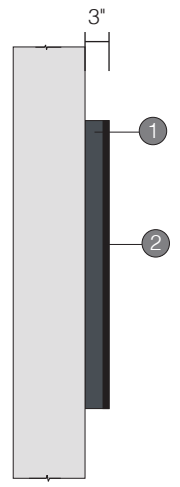
Face Lit Channel Letters

Option A

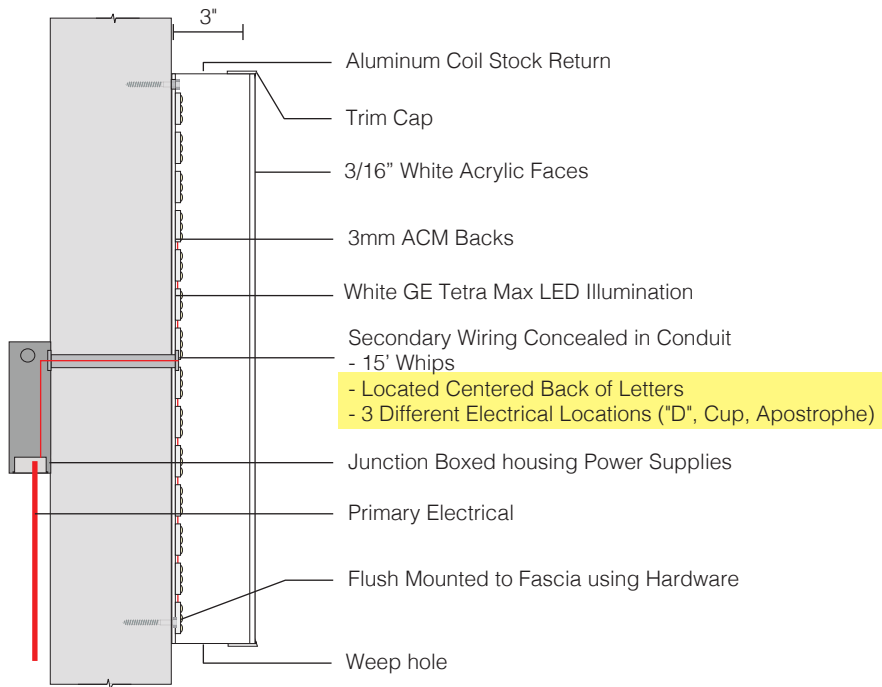


A Sign Elevation - Front View
Scale: 1/2"=1'-0"

Sign Code: DD-VIS22-BS-02-Sm



B Sign Elevation - Side View
Scale: 1/2"=1'-0"



C Sign Elevation - Side Section View
Not to Scale

Specifications

Qty = 1 6.45 Sq Ft

Face Lit Channel Letters

- Flush mount to fascia using hardware

Provided By Others - All below to be provided by others
 - 120V Primary electrical brought to sign location
 - Primary electrical connection by others

Colors Specifications

- 1** Coil Stock
Dark Gray #119; Gloss Finish
Returns
- 2** Trim Cap
3/4" Jewelite Bronze 313
- 3** Translucent Vinyl
Dunkin' Orange; 3M 3M 3630-3202
1st Surface Application
- 4** Translucent Vinyl
Dunkin' Pink; 3M 3630-1511
1st Surface Application
- 5** Paint
Dunkin' Orange; Gloss Finish
Paint to Match PMS 3564C
- 6** Material
1/2" White PVC
Registration Mark



125 Samuel Barnet Boulevard
New Bedford, MA 02745
800.544.0961 | poyantsigns.com



595 Winsted Road,
Torrington CT 06790

Project: 22755
Dunkin'

Sales: Bill Gavigan
Date: 6.26.23
Designer: RMA

Note:
This is an original unpublished drawing created by Poyant Signs, Inc. It is submitted for your personal use in connection with a project being planned for you by Poyant Signs, Inc. It is not to be shown to anyone outside your organization, nor is it to be reproduced, copied or exhibited in any fashion until transferred.

Revisions:
8.29.23 RMA (Tier 2) Updated Standards

This sign is intended to be installed in accordance with the requirements of Article 600 of the National Electrical Code and / or other applicable local codes. This includes proper grounding and bonding of the sign.

Approved By:
Bill Gavigan
Date:

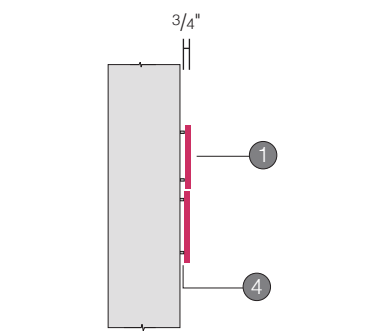
Face Lit Channel Letters

Option A



A Sign Elevation - Front View
Scale: 1/2"=1'-0"

Sign Code: DD-VIS22-BS-04-Sm



B Sign Elevation - Side View
Scale: 1/2"=1'-0"

Specifications



Qty = 1

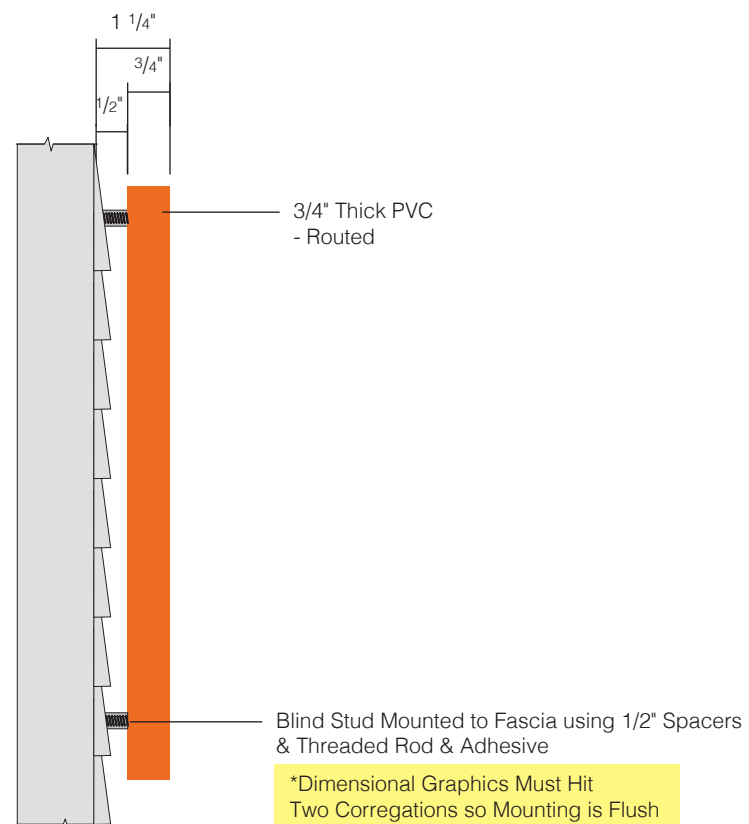
9.04 Sq Ft

Dimensional Graphics

- Graphics to be flush mounted to fascia using spacers, threaded rod & adhesive

Colors Specifications

- 1** Material
3/4" White PVC
- 2** Paint
Dunkin' Orange; Gloss Finish
Paint to Match PMS 3564C
- 3** Paint
Dunkin' Pink; Gloss Finish
Paint to Match PMS 7635C
- 4** Spacers
1/2" Silver, Mill Finish - Not Painted
- 5**  Digital Print
(Qty: 1) 1 1/2" Dia
Controltac Opaque Digital Print
1st Surface Application
 PMS 3564C
- 6** Material
1/2" White PVC
Registration Mark



C Sign Elevation - Side Section View
Not to Scale



125 Samuel Barnet Boulevard
New Bedford, MA 02745
800.544.0961 | poyantsigns.com



595 Winsted Road,
Torrington CT 06790

Project: 22755
Dunkin'

Sales: Bill Gavigan
Date: 6.26.23
Designer: RMA

Note:
This is an original unpublished drawing created by Poyant Signs, Inc. It is submitted for your personal use in connection with a project being planned for you by Poyant Signs, Inc. It is not to be shown to anyone outside your organization, nor is it to be reproduced, copied or exhibited in any fashion until transferred.

Revisions:
8.29.23 RMA (Tier 2) Updated Standards



This sign is intended to be installed in accordance with the requirements of Article 600 of the National Electrical Code and / or other applicable local codes. This includes proper grounding and bonding of the sign.

Approved By:

Bill Gavigan
Date:

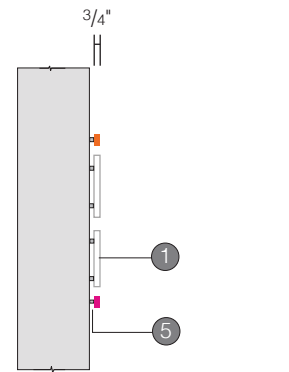
Dimensional Graphics

Option A

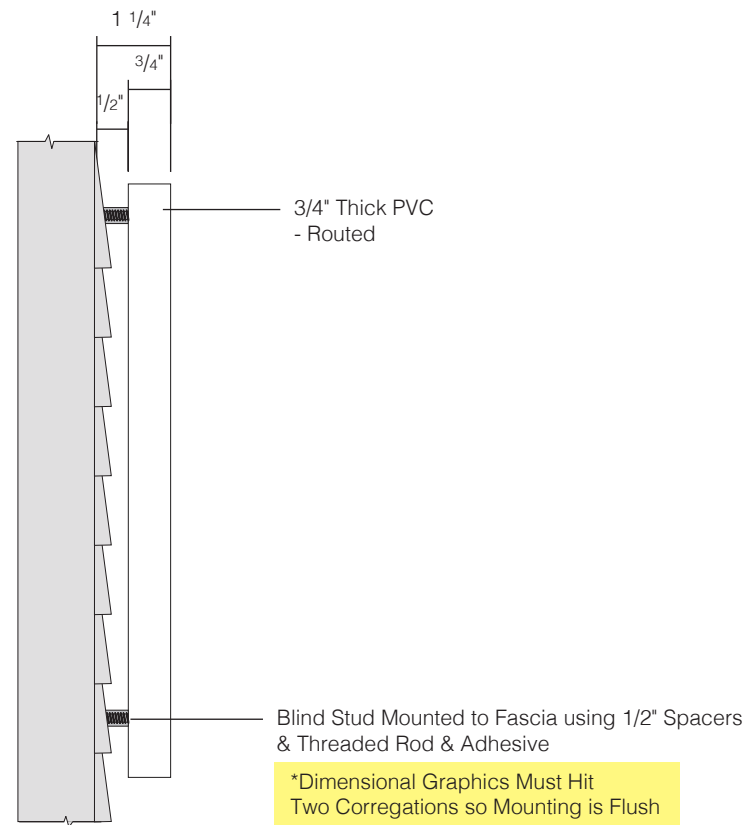


A Sign Elevation - Front View
Scale: 1/2"=1'-0"

Sign Code: DD-VIS22-BS-05-Sm



B Sign Elevation - Side View
Scale: 1/2"=1'-0"



C Sign Elevation - Side Section View
Not to Scale

Specifications

Qty = 1

14.61 Sq Ft

Dimensional Graphics

- Graphics to be Flush Mounted to Fascia using Spacers, Threaded Rod & Adhesive

Colors Specifications

- 1 Material
3/4" White PVC
- 2 Paint
Dunkin' Orange; Gloss Finish
Paint to Match PMS 3564C
- 3 Paint
Dunkin' Pink; Gloss Finish
Paint to Match PMS 7635C
- 4 Paint
White; Gloss Finish
- 5 Spacers
1/2" Silver, Mill Finish - Not Painted
- 6 Digital Print
(Qty: 1) 1" Dia
Controltac Opaque Digital Print
1st Surface Application
- 7 Material
1/2" White PVC
Registration Mark



125 Samuel Barnet Boulevard
New Bedford, MA 02745
800.544.0961 | poyantsigns.com



595 Winsted Road,
Torrington CT 06790

Project: 22755
Dunkin'

Sales: Bill Gavigan
Date: 6.26.23
Designer: RMA

Note:
This is an original unpublished drawing created by Poyant Signs, Inc. It is submitted for your personal use in connection with a project being planned for you by Poyant Signs, Inc. It is not to be shown to anyone outside your organization, nor is it to be reproduced, copied or exhibited in any fashion until transferred.

Revisions:
8.29.23 RMA (Tier 2) Updated Standards

This sign is intended to be installed in accordance with the requirements of Article 600 of the National Electrical Code and / or other applicable local codes. This includes proper grounding and bonding of the sign.

Approved By:
Bill Gavigan
Date:

Dimensional Graphics

Option A



A Sign Elevation - Front View
Scale: 1" = 1'-0"

Specifications

Qty = 1 3.01 Sq Ft

Refurbish Existing Directional

*Remove Existing Faces
*Cabinet, Retainers and Poles to be sanded, primed and painted
Westcott Navy

***Note: Minimum 50° to Paint in Field**

Verify in Field (VIF)
- Cabinet Size (H,W,D)
- Face Cut Size
- Retainer Size & VO
- Lamp Size, Quantity

Colors & Materials

1 Digital Print
(Qty: 2 - 1 of each) Approx 14" x 31"
2 Reflective Digital Print with UV Laminate
1st Surface Application

2 Face Material
(Qty: 2) Approx 14" x 31"
3mm ACM

3 Paint in Field
Westcott Navy; Satin Finish
Benjamin Moore 1624



125 Samuel Barnet Boulevard
New Bedford, MA 02745
800.544.0961 | poyantsigns.com



595 Winsted Road,
Torrington CT 06790

Project: 22755
Dunkin'

Sales: Bill Gavigan
Date: 6.26.23
Designer: RMA

Note:
This is an original unpublished drawing created by Poyant Signs, Inc. It is submitted for your personal use in connection with a project being planned for you by Poyant Signs, Inc. It is not to be shown to anyone outside your organization, nor is it to be reproduced, copied or exhibited in any fashion until transferred.

Revisions:
8.29.23 RMA (Tier 2) Updated Standards

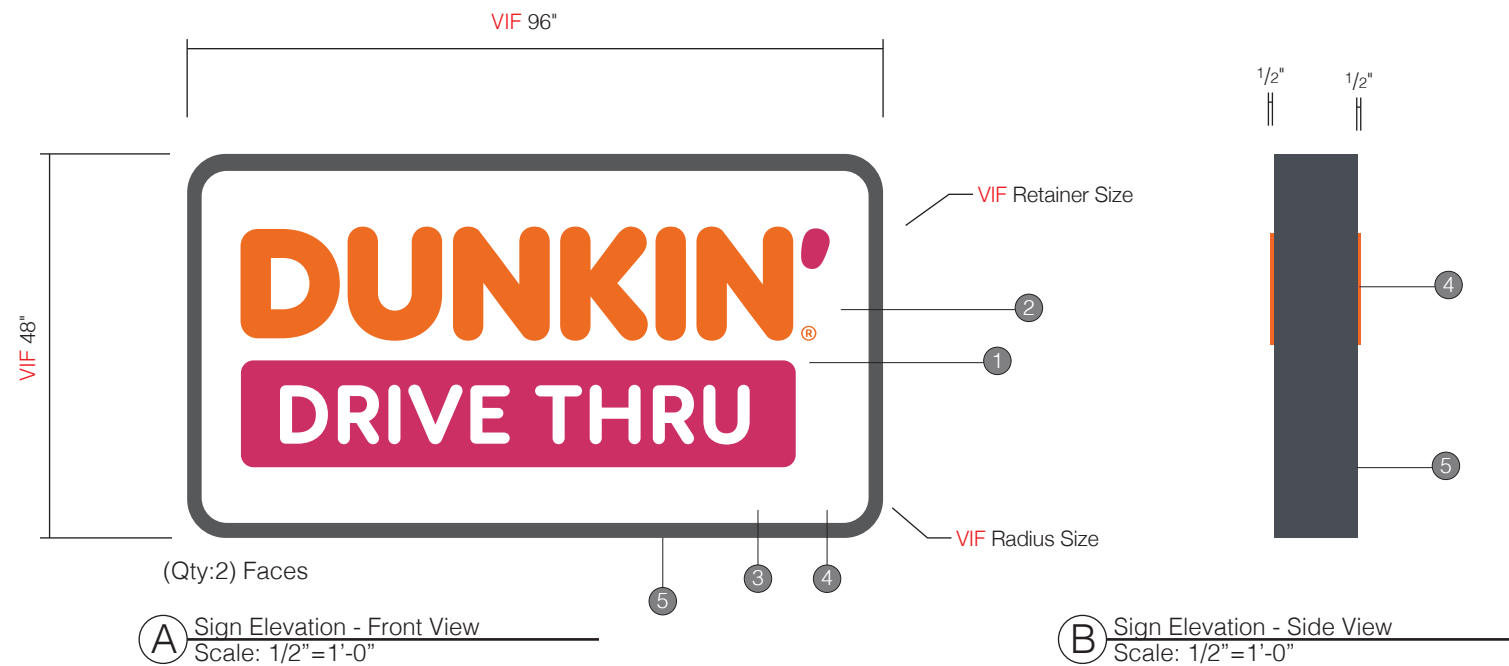


This sign is intended to be installed in accordance with the requirements of Article 600 of the National Electrical Code and / or other applicable local codes. This includes proper grounding and bonding of the sign.

Approved By:
Bill Gavigan
Date:

Refurbish Existing Directional

Option A



C Photo Comp - Existing
Not to Scale



D Photo Comp - Proposed
Not to Scale

Specifications

Qty = 1

21 Sq Ft

Refurbish Existing Pylon

- *Remove Existing (Qty:2) Faces
- *DT Cabinet to be Removed and Disposed
- *Cabinet, Retainers and Poles to be sanded, primed and painted Westcott Navy
- *Note: Minimum 50° to Paint in Field

- Verify in Field (VIF)
- Cabinet Size (H,W,D)
 - Face Cut Size
 - Retainer Size & VO
 - Radius Size
 - Lamp Size, Quantity

Colors & Materials

- 1** Painted Translucent Graphics
DD Orange - to Match PMS 165C
2nd Surface
- 2** Painted Translucent Graphics
DD Magenta - to Match PMS 219C
2nd Surface
- 3** Painted Translucent Graphics
White
2nd Surface
- 4** Formed Faces
(Qty: 2) Approx 4' x 8'
Clear solar grade polycarbonate
"DUNKIN" to be embossed 1/2"
- 5** Paint in Field
Westcott Navy; Satin Finish
Benjamin Moore 1624

Project: 22755
Dunkin'

Sales: Bill Gavigan
Date: 6.26.23
Designer: RMA

Note:
This is an original unpublished drawing created by Poyant Signs, Inc. It is submitted for your personal use in connection with a project being planned for you by Poyant Signs, Inc. It is not to be shown to anyone outside your organization, nor is it to be reproduced, copied or exhibited in any fashion until transferred.

Revisions:
8.29.23 RMA (Tier 2) Updated Standards



This sign is intended to be installed in accordance with the requirements of Article 600 of the National Electrical Code and / or other applicable local codes. This includes proper grounding and bonding of the sign.

Approved By:

Bill Gavigan

Date:

Refurbish Existing Pylon

Option A

Note:

This is an original unpublished drawing created by Poyant Signs, Inc. It is submitted for your personal use in connection with a project being planned for you by Poyant Signs, Inc. It is not to be shown to anyone outside your organization, nor is it to be reproduced, copied or exhibited in any fashion until transferred.

Revisions:

8.29.23 RMA (Tier 2) Updated Standards



This sign is intended to be installed in accordance with the requirements of Article 600 of the National Electrical Code and / or other applicable local codes. This includes proper grounding and bonding of the sign.

Approved By:

Bill Gavigan

Date:

Single Lane Swing Tube Height Detector

Option A

Specifications

Qty = 1

Single Lane Height Detector

- **Horizontal Arm** to be 2" x 2" x 1/8" x 11'-0" square steel tube welded to 3/8" steel mounting plate and capped at other end (See Detail D-F on page 05.2); painted Nebulous White
- **"Drive Thru"** to be .090 aluminum routed with 1" brake formed mounting flange at bottom, to mechanically fasten to horizontal bar; painted PMS 219C
- **Crash Tube** to be 4" dia SCH40 PVC tube wrapped with reflective digital print; clearance designation to be opaque vinyl applied to digital print; cap ends with white shipping tube end caps
- Crash Tube to have (Qty: 2) **E** McMaster-Carr 1/4" x 1" Eyebolts and (Qty: 2) 1/16" x 6" aircraft cables; to attach thru bolted (Qty: 2) **D** McMaster-Carr 1/4" x 2 1/2" Eyebolt thru bolted to Horizontal Arm above
- **C** **Lift Cable** to be Approx 72" x 3/16" galvanized steel cable, to attach to Vertical Pole using (Qty: 1) **F** McMaster-Carr turnbuckle, turnbuckle to attach to (Qty: 1) **A** McMaster-Carr 3/8"-16 x 4" Eyebolt thru bolted at top of vertical pole
- Other end of Lift Cable to attach to (Qty: 1) **B** McMaster-Carr 3/8"-16 x 2 1/2" Eyebolt, thru bolted to Horizontal Arm (to prevent Horizontal Arm from sagging)
- (Qty: 6) **G** McMaster-Carr Oval Shaped Connecting Links to be used to connect all cables to eyebolts and turnbuckle
- **Vertical Pole** to be 4" x 4" x 1/4" x 12'-0" OAH square steel pole; Horizontal Arm attaches to Vertical Pole with (Qty 2) 6" x 6" x 3/8" steel plates on either side of pole thru bolted with (Qty 4) 3/8" dia bolts; painted Nebulous White (See Detail D-F on page 05.2)
- **Height Detector manufactured with Swing Away feature if struck by vehicle; gravity will return canopy to aligned position (See all notes and details on page 02.3)**
- Pole to be welded to an 11 3/4" x 11 3/4" x 1/2" thick steel Mounting Plate (See Detail C on page 05.2)
- **Plate Cover** to be brake formed .063 aluminum painted Nebulous White (See Detail G on page 05.2)
- **Vertical Pole Base Plate** to attach to (Qty:4) 3/4" dia. anchor bolts (36" long with 32" embedment)
- **Foundation** by others to be 4'-0" deep x 1'-6" wide x 1'-6" windload
- ***See Page 7A.2 for install instructions**
- *Clearance TBD on site & appropriate numbers added

Colors Specifications

- 1** Paint
Dunkin' Pink; Gloss Finish
Paint to Match PMS 7635C
- 2** Paint
Nebulous White; Gloss Finish - to Match SW 7063;
- 3** Translucent Vinyl
Dunkin' Pink; 3M 3630-1511
1st Surface Application - Clearance
- 4** Reflective Digital Print
(Qty: 1) 14 1/4" x 96"
3M Controltac Reflective Digital Print
UV Laminate

B Sign Elevation - Side View
Scale: 1/2" = 1'-0"

A Sign Elevation - Front View
Scale: 1/2" = 1'-0"

Sign Code: DD-VIS22-SS-DT-06

Special Order Parts

A (Qty 1)
3/8"-16 x 4"
McMaster-Carr
Galvanized
Steel Eyebolt with
Shoulder for Lifting
(3014T906)
*Vertical Pole

B (Qty 1)
3/8"-16 x 2 1/2"
McMaster-Carr
Galvanized Steel Eyebolt
with Shoulder for Lifting
(3014T62)
*Horizontal Arm (Top)

C (Qty: 1) McMaster-Car
Galvanized Steel
Rope, 7 x 7, 3/16" Diameter
(Cut to Size in Field)
(3450T31)

D (Qty 2)
1/4"-20 x 2 1/2"
McMaster-Carr
Zinc Plated Eyebolt with
Nut (9489T21)
*Horizontal Arm (Bottom)

E (Qty 2)
1/4"-20 x 1"
McMaster-Carr
Zinc Plated Eyebolt
with Nut (9489T17)
*Clearance Tube

F (Qty: 1) McMaster-Car
Forged Galvanized Steel
Turnbuckle Hook-to-Eye,
700 lbs. Capacity, 9-1/4"
Retracted Length
(2998T52)

G (Qty: 6) McMaster-Car
Oval Shaped Threaded
Connecting Link
1/4" - 9/32", (8947T16)



Qty 1
Cam Bearing:
McMaster-Carr High-Load Threaded Track
Roller Black-Oxide Steel, Flat with Seal,
3/4" Roller Diameter
3643K48



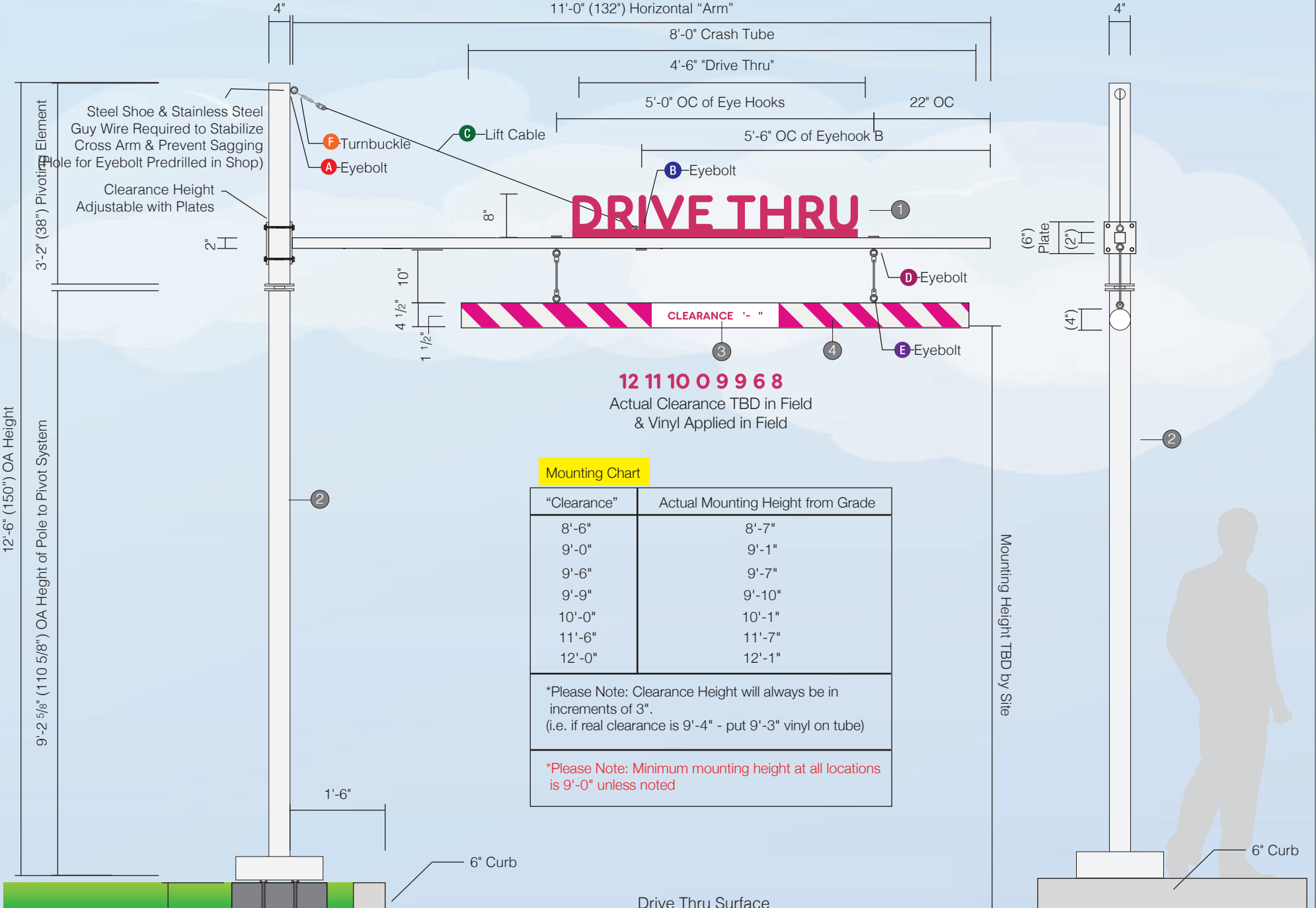
Qty 1
McMaster-Carr Steel Extension Spring
with Hook Ends (9654K476)

Mounting Chart

"Clearance"	Actual Mounting Height from Grade
8'-6"	8'-7"
9'-0"	9'-1"
9'-6"	9'-7"
9'-9"	9'-10"
10'-0"	10'-1"
11'-6"	11'-7"
12'-0"	12'-1"

*Please Note: Clearance Height will always be in increments of 3".
(i.e. if real clearance is 9'-4" - put 9'-3" vinyl on tube)

*Please Note: Minimum mounting height at all locations is 9'-0" unless noted



12'-6" (150") OAH Height
3'-2" (38") Pivoting Pole for Eyebolt Predrilled in Shop
9'-2 5/8" (110 5/8") OAH Height of Pole to Pivot System

Mounting Height TBD by Site

4'-0" Foundation

1'-6" Foundation

6" Curb


Drive Thru Surface

6" Curb

Note:
This is an original unpublished drawing created by Poyant Signs, Inc. It is submitted for your personal use in connection with a project being planned for you by Poyant Signs, Inc. It is not to be shown to anyone outside your organization, nor is it to be reproduced, copied or exhibited in any fashion until transferred.

Revisions:

8.10.23	RMA (R1)	Quantity

 This sign is intended to be installed in accordance with the requirements of Article 600 of the National Electrical Code and / or other applicable local codes. This includes proper grounding and bonding of the sign.

Approved By:
Bill Gavigan
Date:

Anchor Bolts

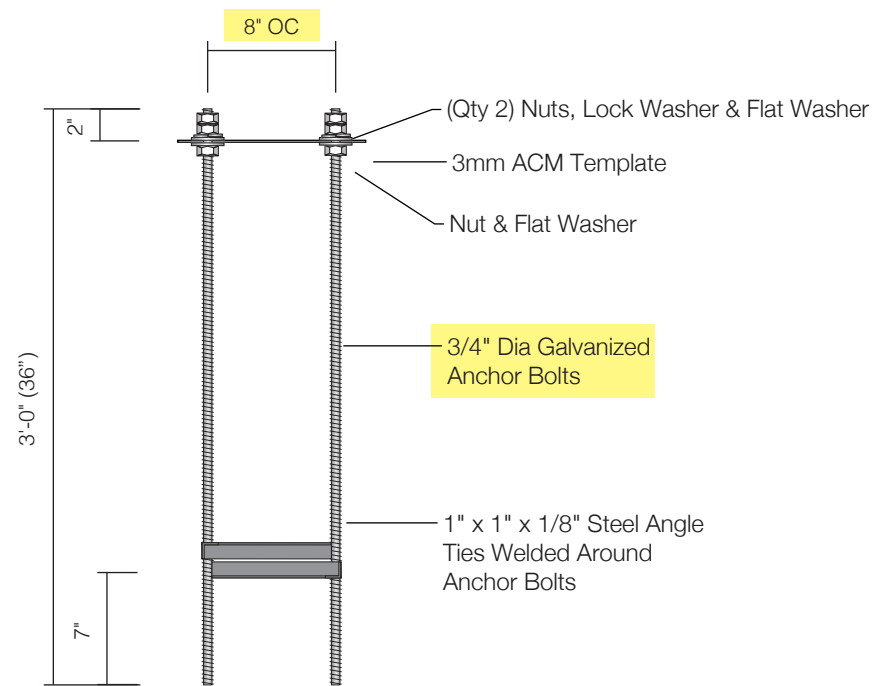
Option A

Specifications

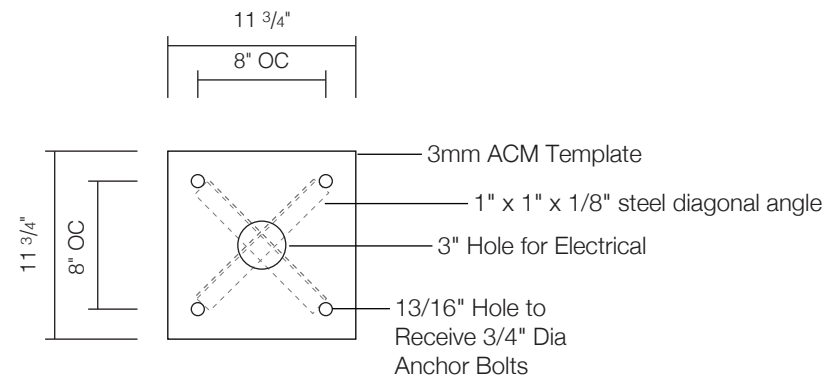
Qty: 1 (Qty: 1 - 8 OC; Height Detector)

Anchor Bolt Assemblys

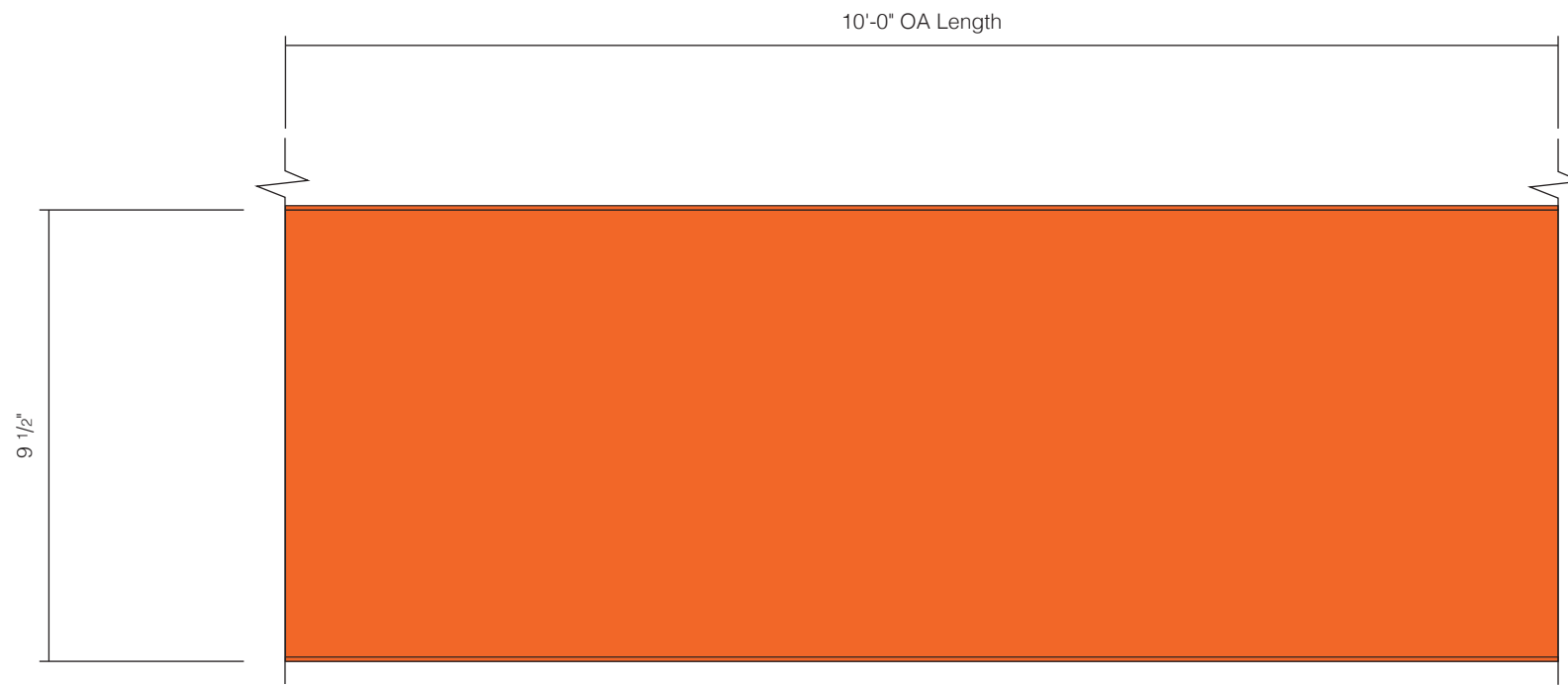
- (Qty 4) 3/4" dia galvanized anchor bolts (36" long with 32" embedment)
- (Qty 1) 3mm ACM plate template to hold anchor bolts with 3 nuts, 2 flat washers, and 1 lock washer per bolt
- (Qty: 2) 1" x 1" x 1/8" steel diagonal angle welded to anchor bolts (steel ties welded around) to keep anchor bolts straight and true



A Anchor Bolt Assembly Detail (Qty: 2)
Scale: 1"=1'-0"

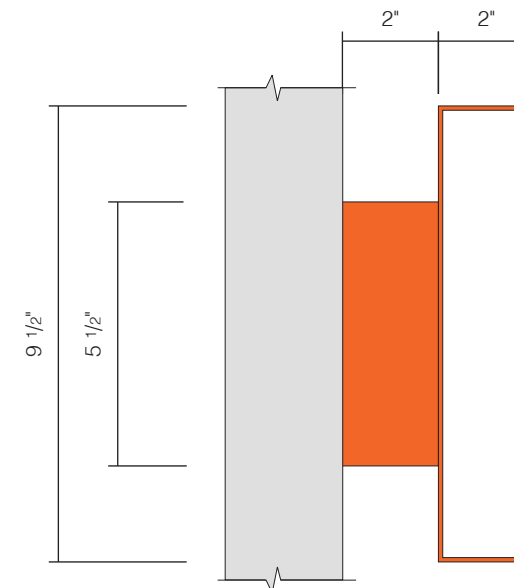


B Plywood Template Detail (Qty: 2)
Scale: 1"=1'-0"



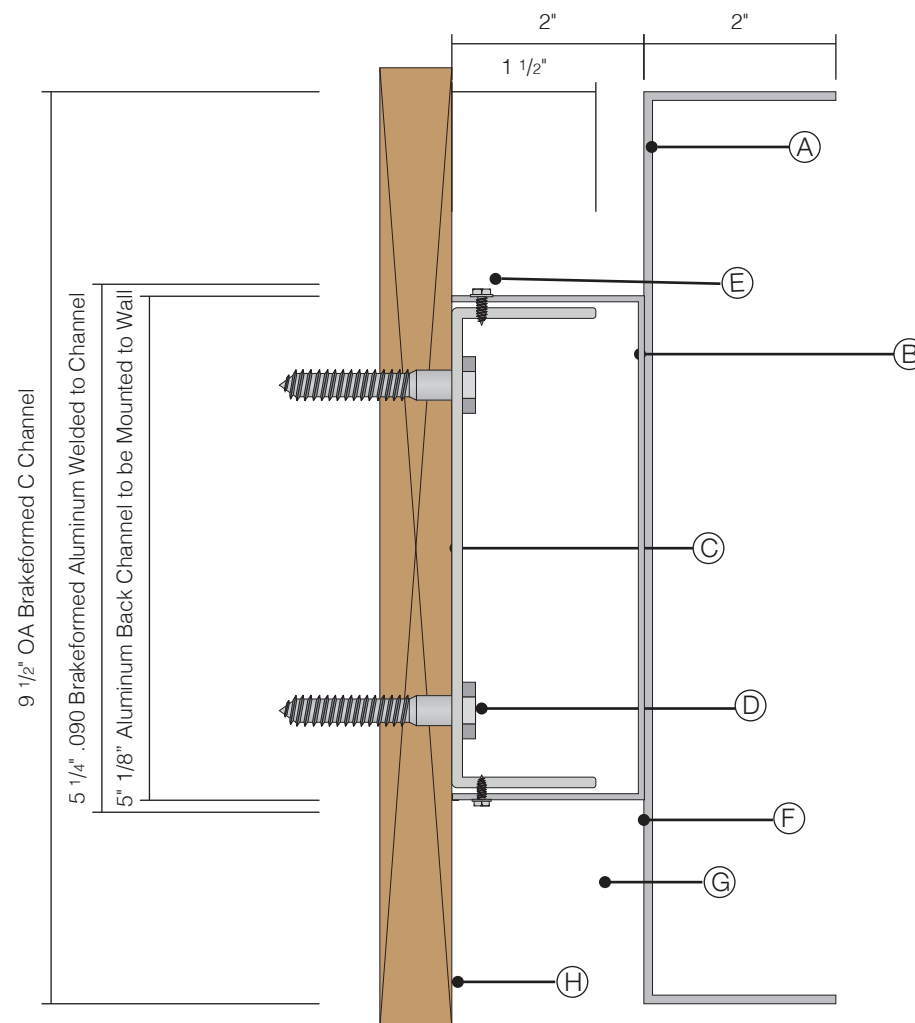
A Sign Elevation - Front View
Scale: 3"=1'-0"

Sign Code: 14809-DD-DTW-BLDGBANDS



B Sign Elevation - Side Views
Scale: 3"=1'-0"

- A** .090 Aluminum Brakeformed and Painted PMS 165C
- B** .090 Aluminum Brakeformed and Painted PMS 165C
- C** 1/8" Aluminum Back Channel
- D** 1/8" Aluminum Back Channel Mounted to Fascia Using 2" Long Lag Bolts as Required; Mounted First
- E** Tech Screws Painted Orange; Section B Mounted Over Section C and Secured Using Tech Screws
- F** Section A and Section B Welded Together
- H** Blocking by Others



C Side Section View
Scale: 6"=1'-0"

Specifications

Qty = 11

Architectural Building/Band Element

***Back Mounting Channel to be Cut to Size in Field**

- C-Channel to be .090 Aluminum Brakeformed; Painted PMS 165C
- Behind C-Channel; .090 Aluminum Brakeformed and applied to C-Channel; Painted PMS 165C
- 1/8" Aluminum Back Mounting Channel to be mounted to existing fascia using fasteners as required; mill finish
- C-Channel with applied aluminum mounted over 1/8" back channel; fastened top and bottom with tech screws as required; Tech Screws painted PMS 165C
- Plywood blocking provided by GC
- LED Wall Wash Lighting is Optional

Provided By Others - All below to be provided by others
- 3/8" weep holes as needed in field

Colors & Materials

Paint

To Match PMS 165C; Gloss Finish

Project: 22755
Dunkin'

Sales: Bill Gavigan
Date: 6.26.23
Designer: RMA

Note:
This is an original unpublished drawing created by Poyant Signs, Inc. It is submitted for your personal use in connection with a project being planned for you by Poyant Signs, Inc. It is not to be shown to anyone outside your organization, nor is it to be reproduced, copied or exhibited in any fashion until transferred.

Revisions:



This sign is intended to be installed in accordance with the requirements of Article 600 of the National Electrical Code and / or other applicable local codes. This includes proper grounding and bonding of the sign.

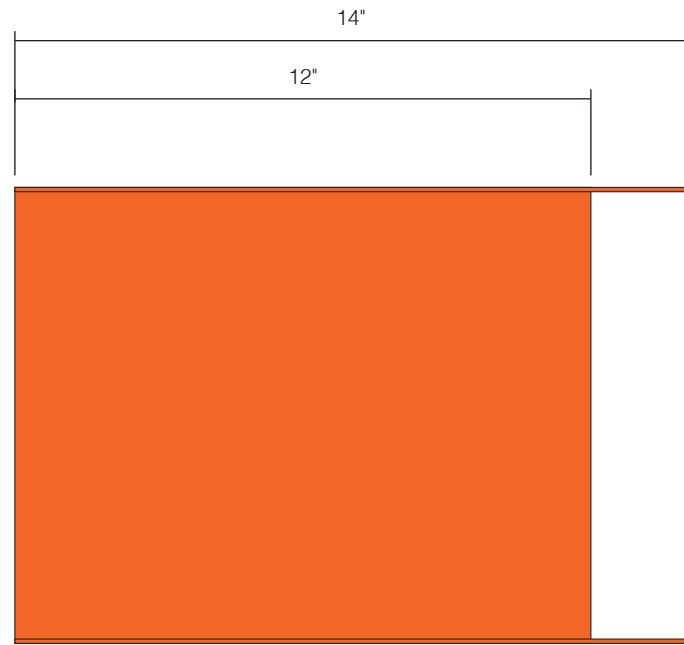
Approved By:

Bill Gavigan

Date:

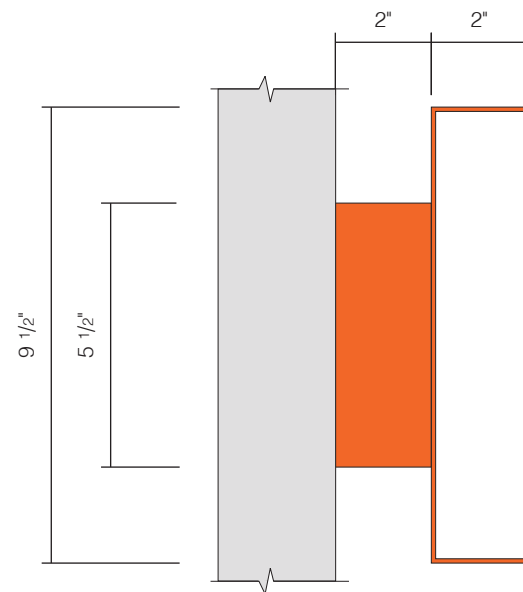
Architectural Building Elements

Option A

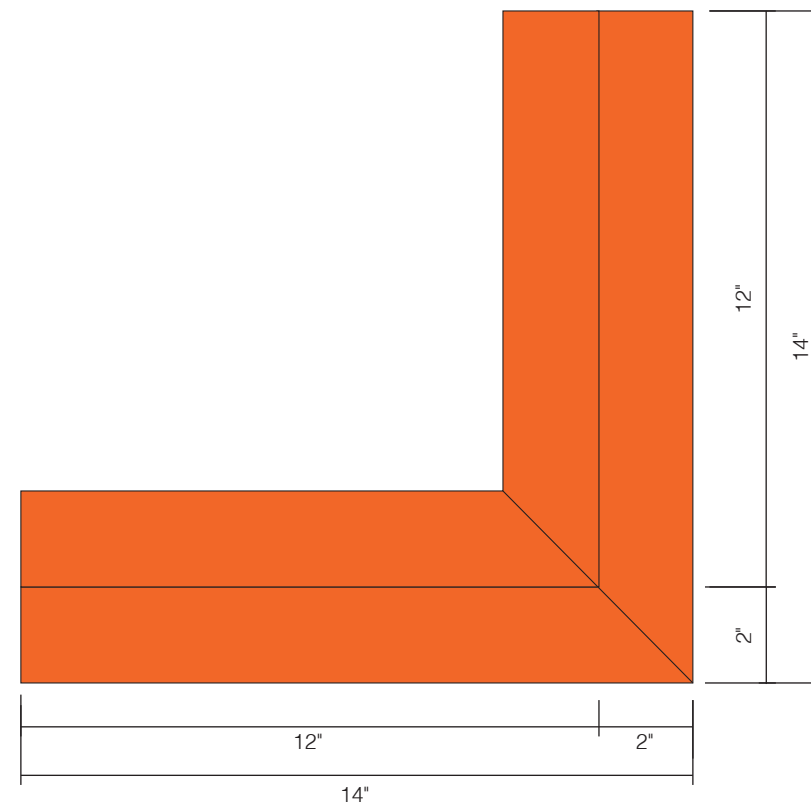


A Sign Elevation - Front View - Outside Corner Piece
Scale: 3"=1'-0"

Sign Code: 14809-DD-DTW-CORNER

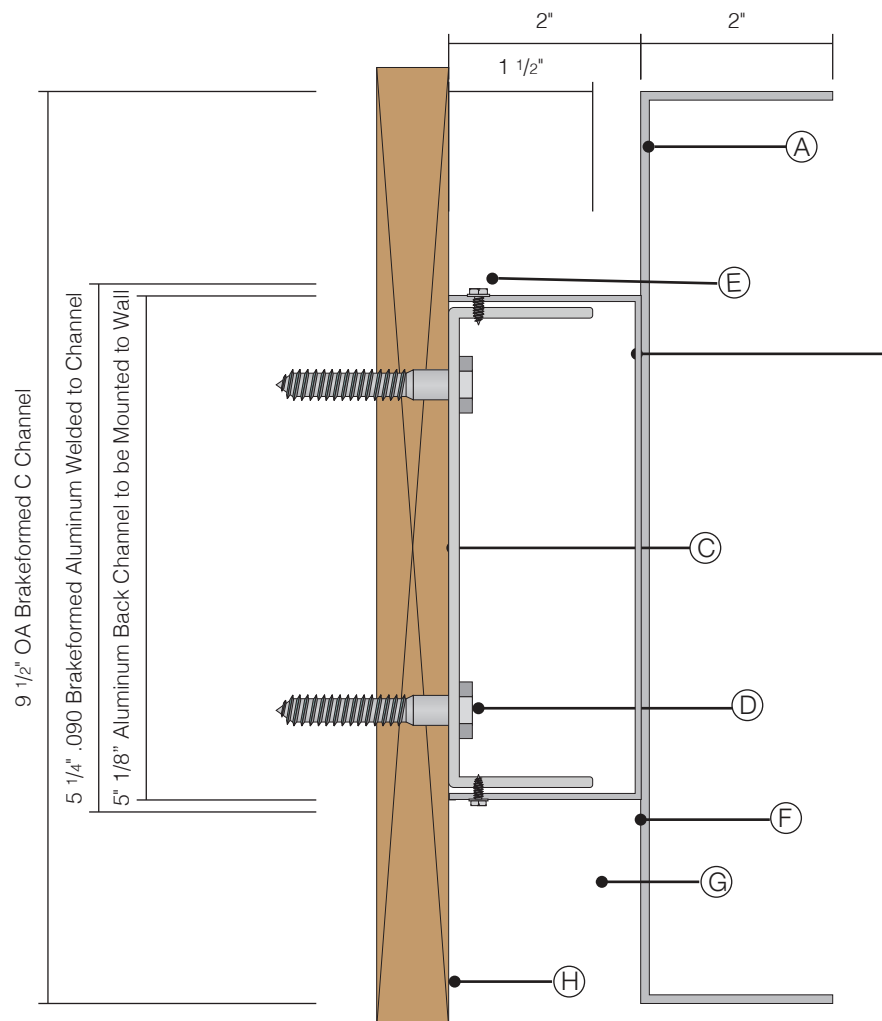


B Sign Elevation - Side Views
Scale: 3"=1'-0"



C Sign Elevation - Plan View - Outside Corner
Scale: 3"=1'-0"

- A** .090 Aluminum Brakeformed and Painted PMS 165C
- B** .090 Aluminum Brakeformed and Painted PMS 165C
- C** 1/8" Aluminum Back Channel
- D** 1/8" Aluminum Back Channel Mounted to Fascia Using 2" Long Lag Bolts as Required; Mounted First
- E** Tech Screws Painted Orange; Section B Mounted Over Section C and Secured Using Tech Screws
- F** Section A and Section B Welded Together
- H** Blocking by Others



C Side Section View
Scale: 6"=1'-0"

Specifications

Qty = 3

Architectural Building Band Outside Corner

***Back Mounting Channel to be Cut to Size in Field**

- C-Channel to be .090 Aluminum Brakeformed; Painted PMS 165C
- Behind C-Channel; .090 Aluminum Brakeformed and applied to C-Channel; Painted PMS 165C
- 1/8" Aluminum Back Mounting Channel to be mounted to existing fascia using fasteners as required; mill finish
- C-Channel with applied aluminum mounted over 1/8" back channel; fastened top and bottom with tech screws as required; Tech Screws painted PMS 165C
- Plywood blocking provided by GC
- LED Wall Wash Lighting is Optional

Provided By Others - All below to be provided by others

- 3/8" weep holes as needed in field

Colors & Materials

Paint

To Match PMS 165C; Gloss Finish

Project: 22755
Dunkin'

Sales: Bill Gavigan
Date: 6.26.23
Designer: RMA

Note:

This is an original unpublished drawing created by Poyant Signs, Inc. It is submitted for your personal use in connection with a project being planned for you by Poyant Signs, Inc. It is not to be shown to anyone outside your organization, nor is it to be reproduced, copied or exhibited in any fashion until transferred.

Revisions:

Rev	Description



This sign is intended to be installed in accordance with the requirements of Article 600 of the National Electrical Code and / or other applicable local codes. This includes proper grounding and bonding of the sign.

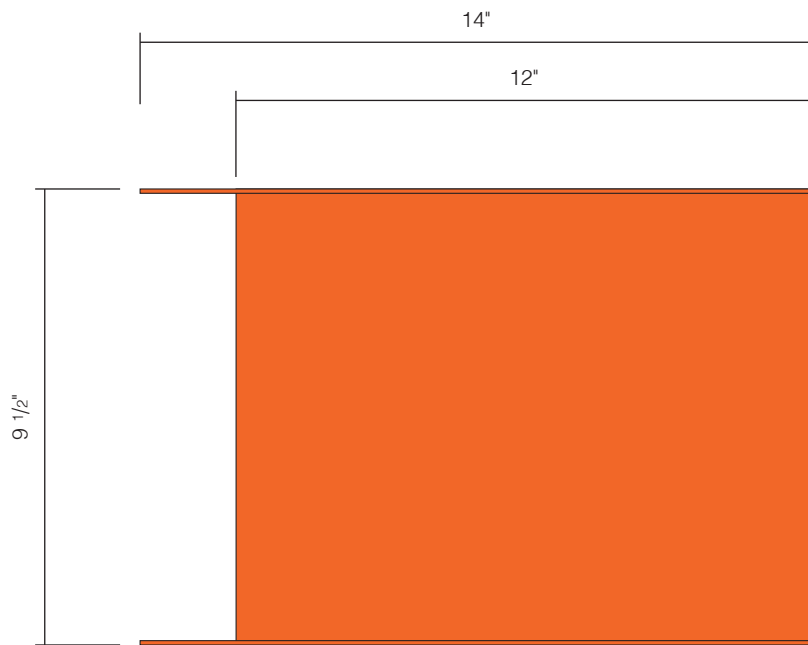
Approved By:

Bill Gavigan

Date:

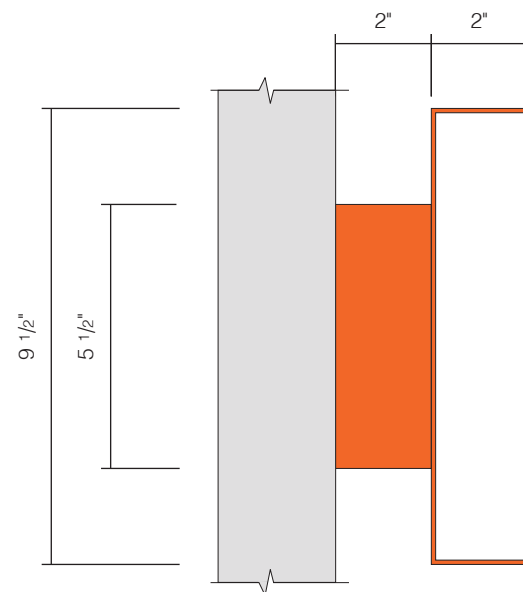
Architectural Building Elements

Option A

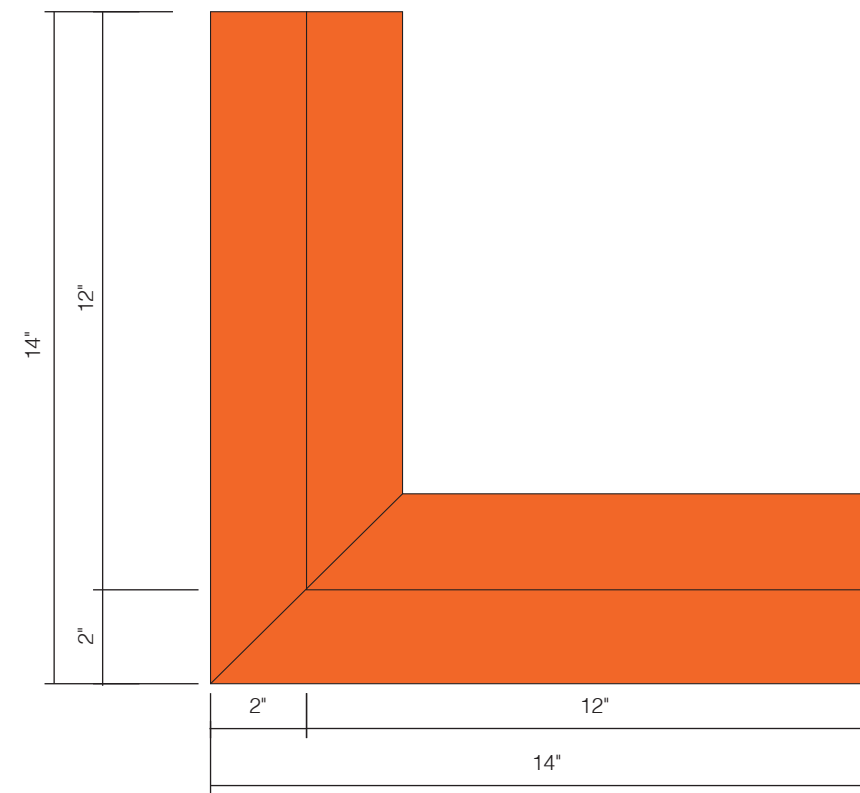


A Sign Elevation - Front View - Inside Corner Piece
Scale: 3"=1'-0"

Sign Code: 14809-DD-DTW-CORNER

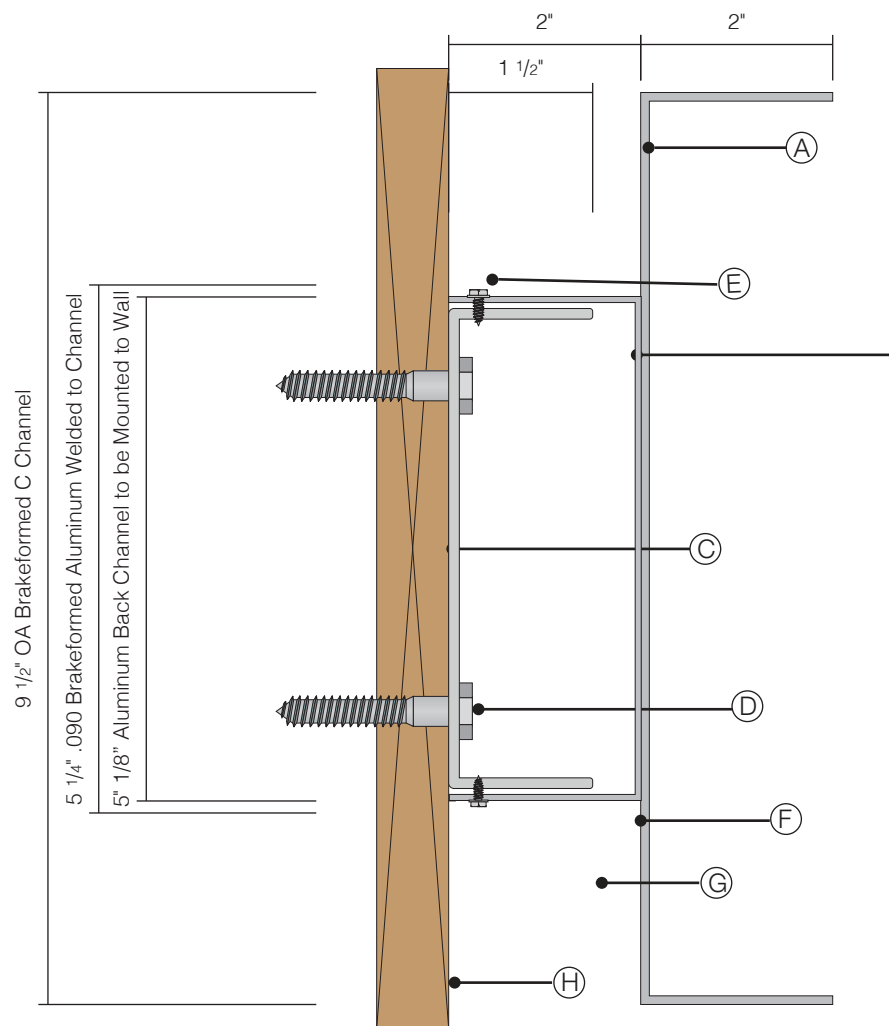


B Sign Elevation - Side Views
Scale: 3"=1'-0"



C Sign Elevation - Plan View - Inside Corner
Scale: 3"=1'-0"

- A** .090 Aluminum Brakeformed and Painted PMS 165C
- B** .090 Aluminum Brakeformed and Painted PMS 165C
- C** 1/8" Aluminum Back Channel
- D** 1/8" Aluminum Back Channel Mounted to Fascia Using 2" Long Lag Bolts as Required; Mounted First
- E** Tech Screws Painted Orange; Section B Mounted Over Section C and Secured Using Tech Screws
- F** Section A and Section B Welded Together
- H** Blocking by Others



C Side Section View
Scale: 6"=1'-0"

Specifications

Qty = 1

Architectural Building Band Inside Corner

***Back Mounting Channel to be Cut to Size in Field**

- C-Channel to be .090 Aluminum Brakeformed; Painted PMS 165C
- Behind C-Channel; .090 Aluminum Brakeformed and applied to C-Channel; Painted PMS 165C
- 1/8" Aluminum Back Mounting Channel to be mounted to existing fascia using fasteners as required; mill finish
- C-Channel with applied aluminum mounted over 1/8" back channel; fastened top and bottom with tech screws as required; Tech Screws painted PMS 165C
- Plywood blocking provided by GC
- LED Wall Wash Lighting is Optional

Provided By Others - All below to be provided by others

- 3/8" weep holes as needed in field

Colors & Materials

Paint

To Match PMS 165C; Gloss Finish

Project: 22755
Dunkin'

Sales: Bill Gavigan
Date: 6.26.23
Designer: RMA

Note:

This is an original unpublished drawing created by Poyant Signs, Inc. It is submitted for your personal use in connection with a project being planned for you by Poyant Signs, Inc. It is not to be shown to anyone outside your organization, nor is it to be reproduced, copied or exhibited in any fashion until transferred.

Revisions:

Rev	Description



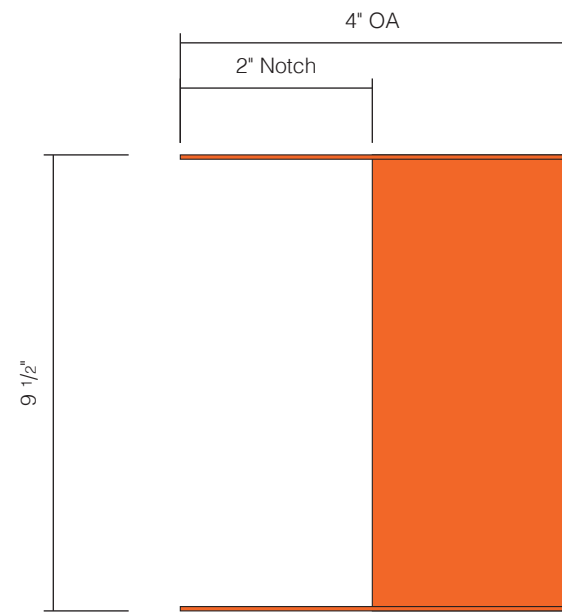
This sign is intended to be installed in accordance with the requirements of Article 600 of the National Electrical Code and / or other applicable local codes. This includes proper grounding and bonding of the sign.

Approved By:

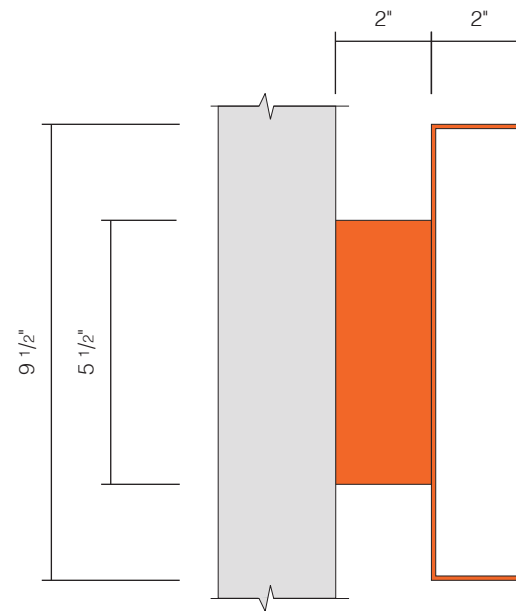
Bill Gavigan
Date:

Architectural Building Elements

Option A



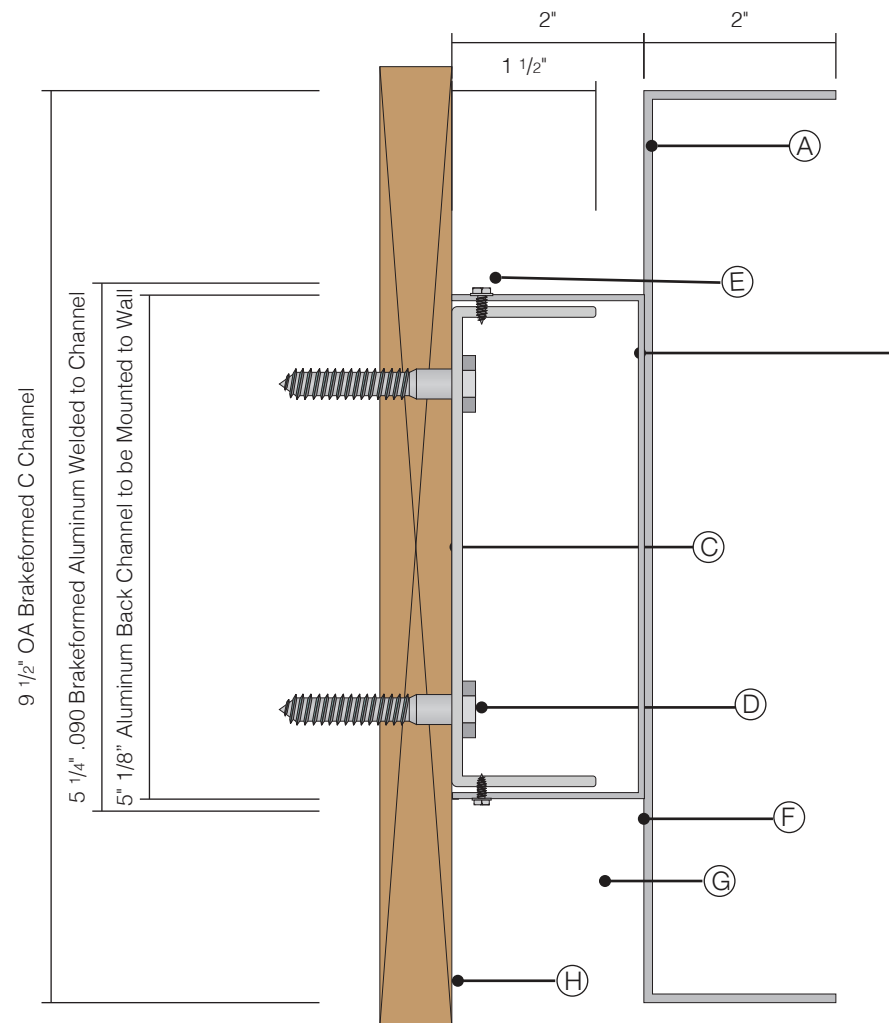
A Sign Elevation - Front View
Scale: 3"=1'-0"



B Sign Elevation - Side Views
Scale: 3"=1'-0"

Sign Code: 14809-DD-DTW-ENDCAP

- A** .090 Aluminum Brakeformed and Painted PMS 165C
- B** .090 Aluminum Brakeformed and Painted PMS 165C
- C** 1/8" Aluminum Back Channel
- D** 1/8" Aluminum Back Channel Mounted to Fascia Using 2" Long Lag Bolts as Required; Mounted First
- E** Tech Screws Painted Orange; Section B Mounted Over Section C and Secured Using Tech Screws
- F** Section A and Section B Welded Together
- H** Blocking by Others



C Side Section View
Scale: 6"=1'-0"

Specifications

Qty = 2

Architectural Building Band End Cap

***Back Mounting Channel to be Cut to Size in Field**

- C-Channel to be .090 Aluminum Brakeformed; Painted PMS 165C
- Behind C-Channel; .090 Aluminum Brakeformed and applied to C-Channel; Painted PMS 165C
- 1/8" Aluminum Back Mounting Channel to be mounted to existing fascia using fasteners as required; mill finish
- C-Channel with applied aluminum mounted over 1/8" back channel; fastened top and bottom with tech screws as required; Tech Screws painted PMS 165C
- Plywood blocking provided by GC
- LED Wall Wash Lighting is Optional

Provided By Others - All below to be provided by others
- 3/8" weep holes as needed in field

Colors & Materials

Paint

To Match PMS 165C; Gloss Finish

Project: 22755
Dunkin'

Sales: Bill Gavigan
Date: 6.26.23
Designer: RMA

Note:
This is an original unpublished drawing created by Poyant Signs, Inc. It is submitted for your personal use in connection with a project being planned for you by Poyant Signs, Inc. It is not to be shown to anyone outside your organization, nor is it to be reproduced, copied or exhibited in any fashion until transferred.

Revisions:

This sign is intended to be installed in accordance with the requirements of Article 600 of the National Electrical Code and / or other applicable local codes. This includes proper grounding and bonding of the sign.

Approved By:


Bill Gavigan
Date:

Architectural Building Elements

Option A

Note:
This is an original unpublished drawing created by Poyant Signs, Inc. It is submitted for your personal use in connection with a project being planned for you by Poyant Signs, Inc. It is not to be shown to anyone outside your organization, nor is it to be reproduced, copied or exhibited in any fashion until transferred.

Revisions:

 This sign is intended to be installed in accordance with the requirements of Article 600 of the National Electrical Code and / or other applicable local codes. This includes proper grounding and bonding of the sign.

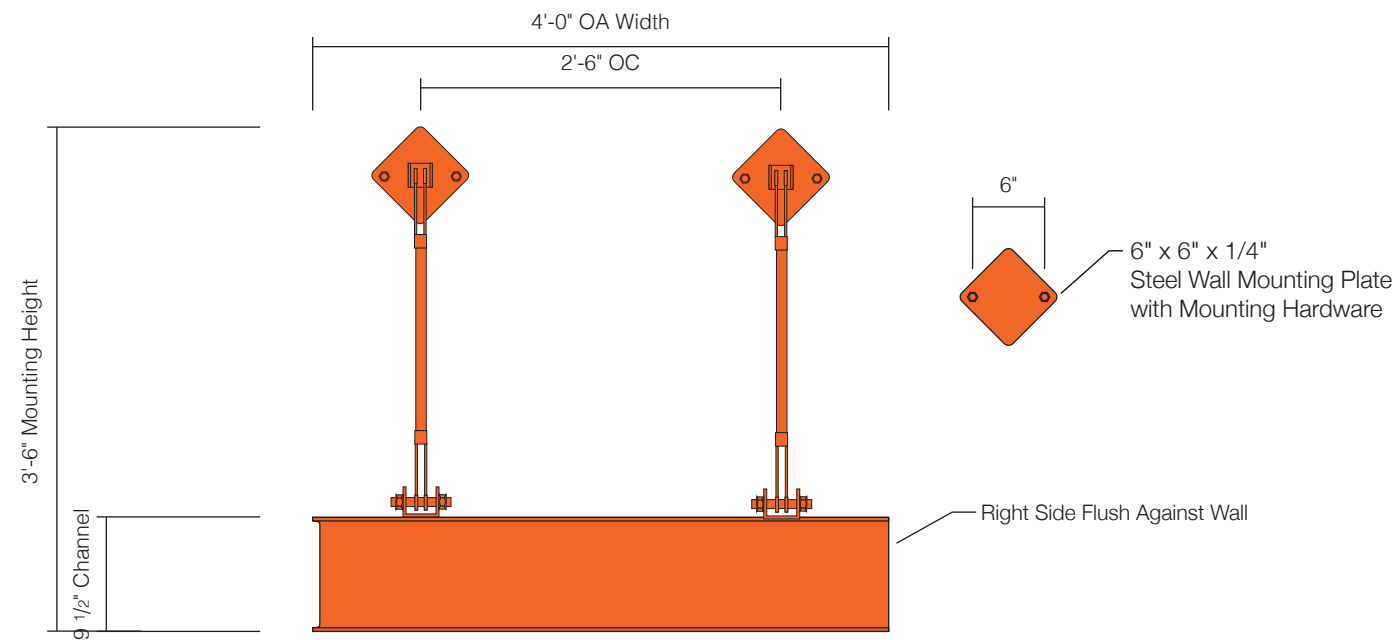
Approved By:

Bill Gavigan

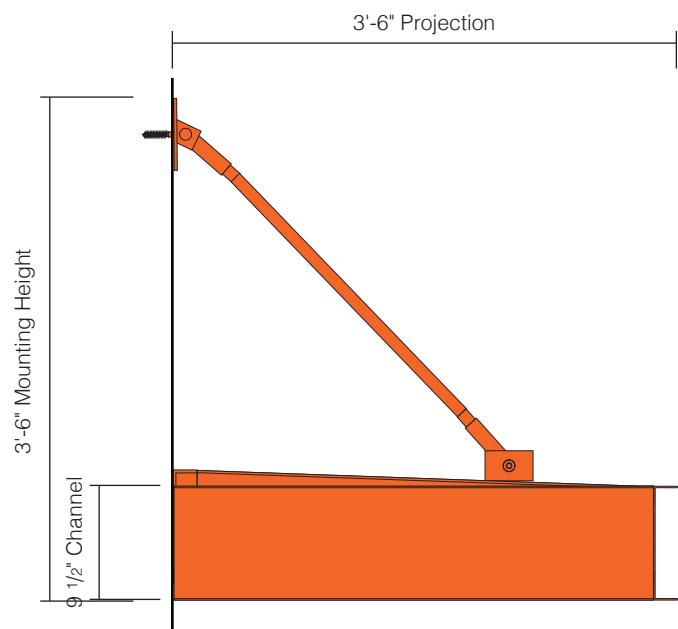
Date:

Architectural Metal Canopy w/
Down Lighting **Non Standard**

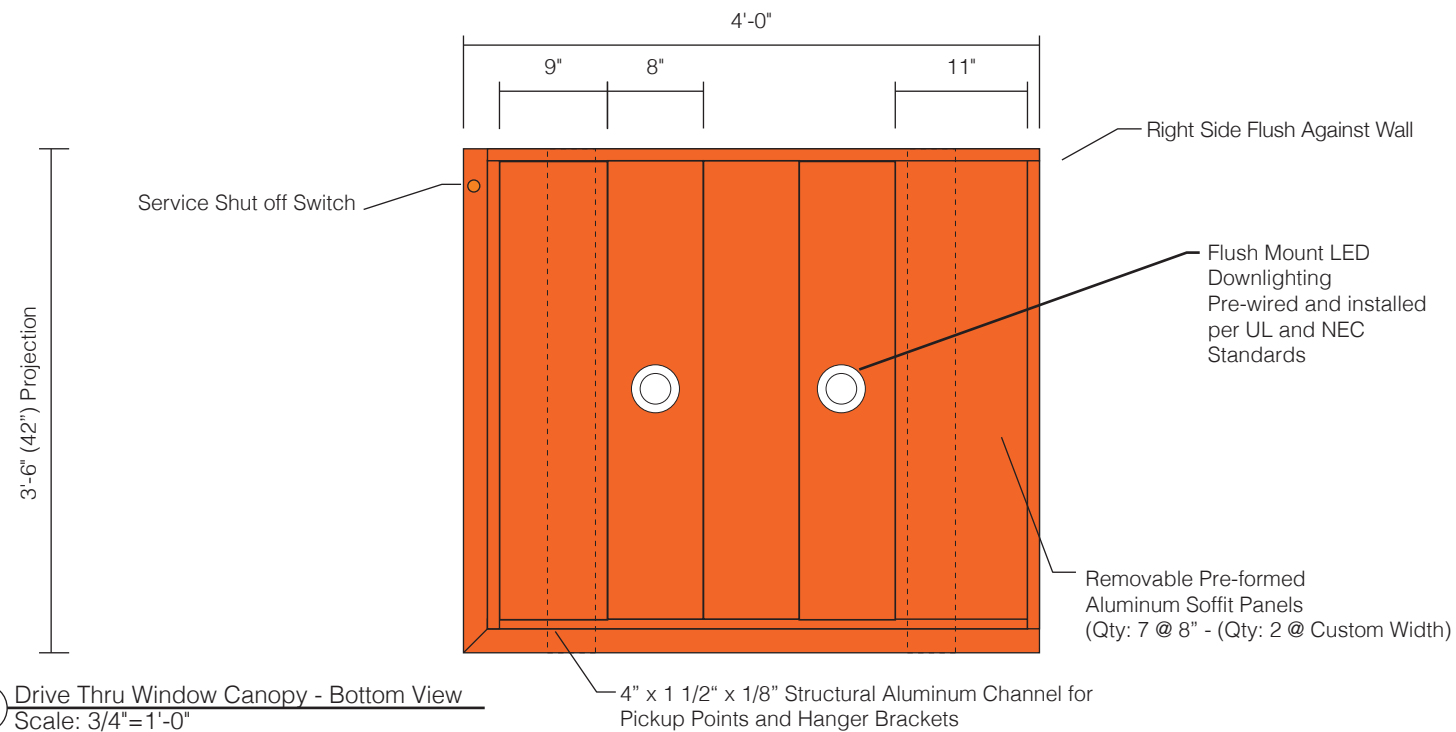
Option A



A Drive Thru Building Canopy - Front View
Scale: 3/4"=1'-0"



B Drive Thru Window Building Canopy - Side View
Scale: 3/4"=1'-0"



C Drive Thru Window Canopy - Bottom View
Scale: 3/4"=1'-0"

Specifications

Qty = 1

Architectural Metal Canopy w/ Down Lighting

- See all details on this page and detail D on page 1A.2
- All materials and exposed fastener heads to be painted PMS 165C
- Downlight fixtures to be white with white illumination
- Connection point at canopy for Tie Rod Yokes to also be pick up points
- Canopy to be pre-assembled, pre-wired and UL stamped in shop
- Lag bolted into wood blocking provided by GC
- Secure diverter pan to wall with tek screws and silicone caulking sealant
- Apply a full bead of Silco RTV 4500 High Strength Silicone Sealant caulking along top of canopy; sealing it to wall
- *Shims may be required behind mounting plates, at time of installation to level out with existing trim board

VIF:
- Measurements of Entrance for Proper Sizing

Provided By Others - All below to be provided by others

- (Qty: 2) 2" thick x 12" high wood blocking directly behind signage
- Flashing and Waterproofing required by others
- 120V/277V Primary electrical
- Primary electrical connection by others

Colors & Materials

Paint

 To Match PMS 165C; Gloss Finish

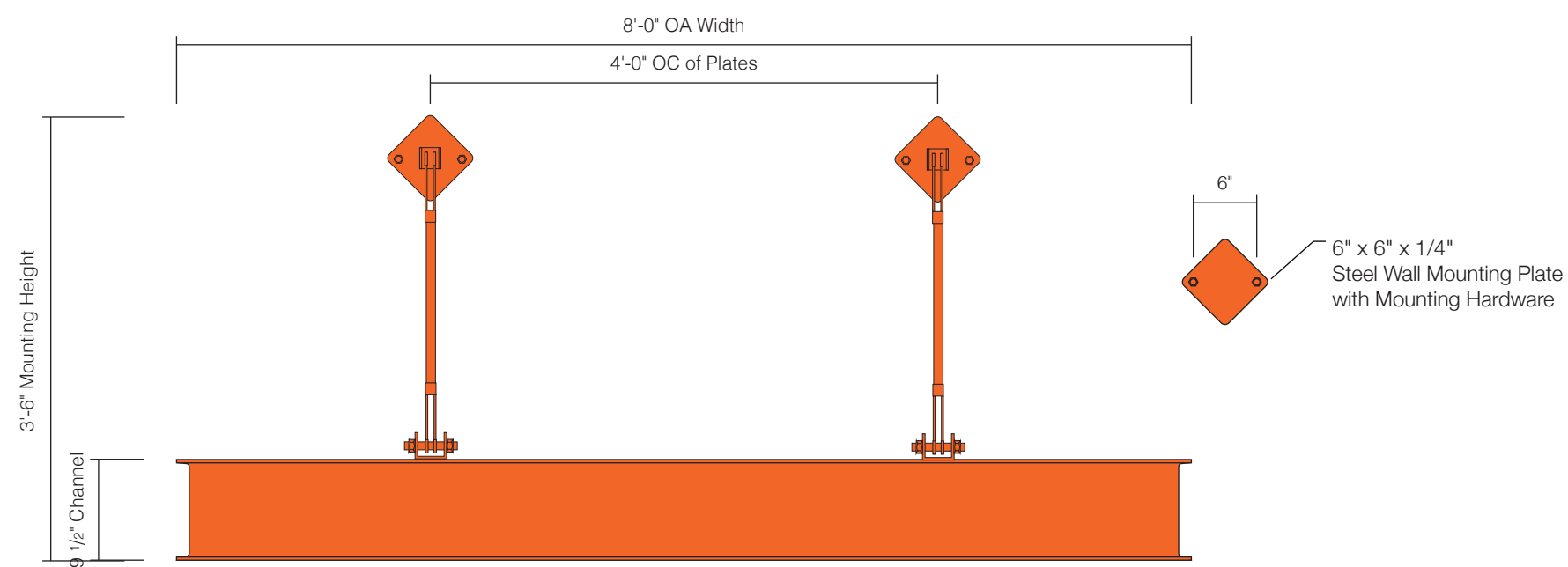
Special Order Parts



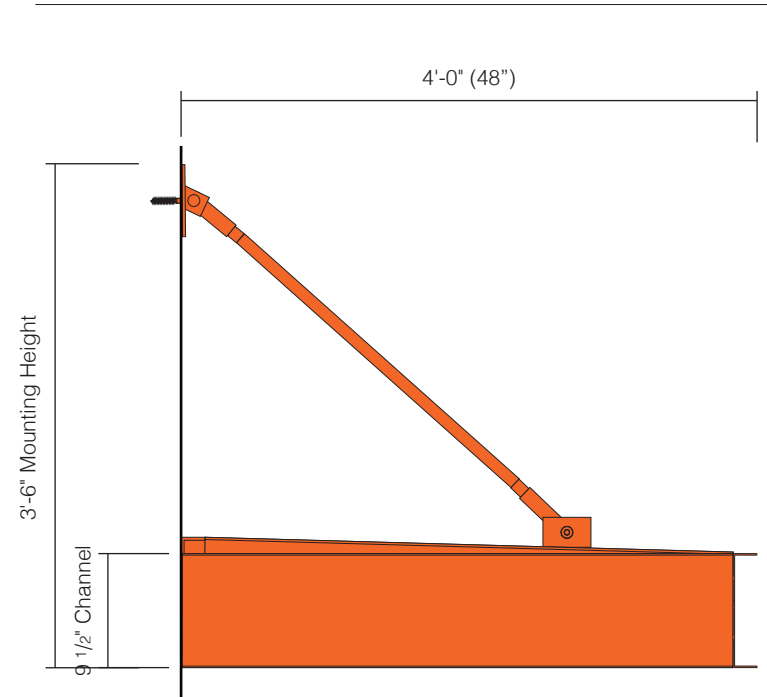
Qty 2
4" Halo Ultra Thin Downlight 3000K
Wet-Rated, UL Listed
SKU #HLBSL4069FS351EMWR



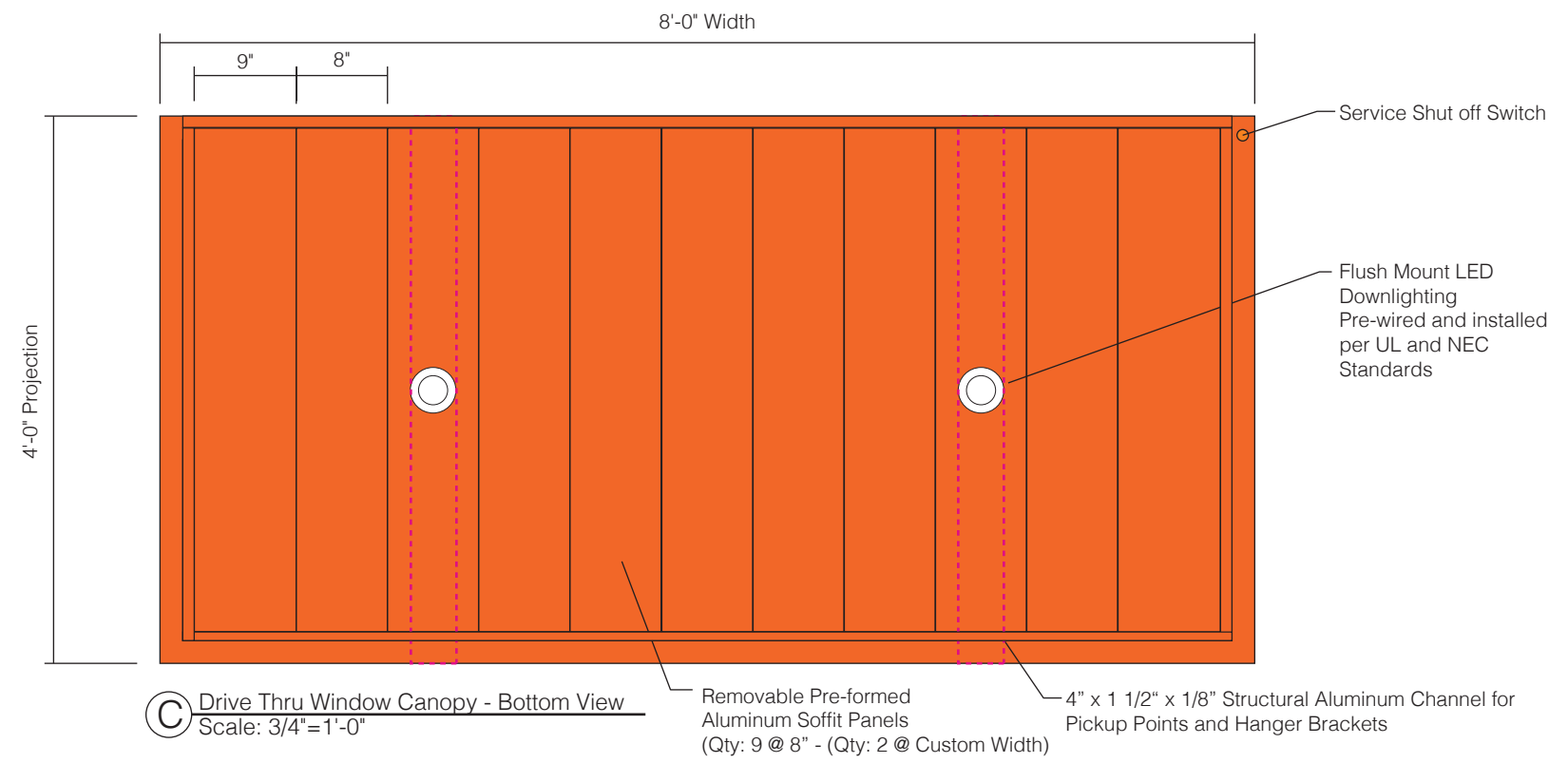
Qty 1
Silco RTV 4500 High Strength
Silicone Sealant



A Drive Thru Building Canopy - Front View
Scale: 3/4"=1'-0" **Sign Code: 14809-DD-DTW-CANOPY-8-4**



B Drive Thru Window Building Canopy - Side View
Scale: 3/4"=1'-0"



C Drive Thru Window Canopy - Bottom View
Scale: 3/4"=1'-0"

Specifications

Qty = 1

Architectural Metal Canopy w/ Down Lighting

- See all details on this page and detail D on page 1A.2
- All materials and exposed fastener heads to be painted PMS 165C
- Downlight fixtures to be white with white illumination
- Connection point at canopy for Tie Rod Yokes to also be pick up points
- Canopy to be pre-assembled, pre-wired and UL stamped in shop
- Lag bolted into wood blocking provided by GC
- Secure diverter pan to wall with tek screws and silicone caulking sealant
- Apply a full bead of Silco RTV 4500 High Strength Silicone Sealant caulking along top of canopy; sealing it to wall
- *Shims may be required behind mounting plates, at time of installation to level out with existing trim board

- Provided By Others** - All below to be provided by others
- (Qty: 2) 2" thick x 12" high wood blocking directly behind signage
 - Flashing and Waterproofing required by others
 - 120V/277V Primary electrical
 - Primary electrical connection by others

Colors & Materials

Paint
 To Match PMS 165C; Gloss Finish

Special Order Parts

- Qty 2
4" Halo Ultra Thin Downlight 3000K
Wet-Rated, UL Listed
SKU #HLBSL4069FS351EMWR
- Qty 1
Silco RTV 4500 High Strength Silicone Sealant

Project: 22755
Dunkin'

Sales: Bill Gavigan
Date: 6.26.23
Designer: RMA

Note:
This is an original unpublished drawing created by Poyant Signs, Inc. It is submitted for your personal use in connection with a project being planned for you by Poyant Signs, Inc. It is not to be shown to anyone outside your organization, nor is it to be reproduced, copied or exhibited in any fashion until transferred.

Revisions:

UL
This sign is intended to be installed in accordance with the requirements of Article 600 of the National Electrical Code and / or other applicable local codes. This includes proper grounding and bonding of the sign.

Approved By:

Bill Gavigan
Date:

Architectural Metal Canopy w/
Down Lighting

Option A



OUTDOOR

WALL MOUNT DOUBLE 55"

Uniting cutting-edge technology and detailed behavioral research, our outdoor solutions optimize the customer experience with improved speed, order accuracy and reliability.

KEY SPECIFICATIONS

- 90 degree Hinged Samsung IP56 rated high brightness displays.
- Integrated speaker unit.
- Slimline enclosure design.
- Engineered to handle a wide range of temperatures and climates (-22°F to 122°F).



All measurements in inches [millimeters].

TECHNICAL DETAILS

Total Power Consumption

9.8A @ 100-240V AC,
50-60Hz

Total Weight

379.6 lbs (172.2kg)

Recommended Wall Type

Concrete

Recommended Fixing Anchors

Sleeve Anchor,
3/8" dia. x 3" length (x8)



For enquiries and further information on our range of products please visit www.coatesgroup.com

Bill Javigan