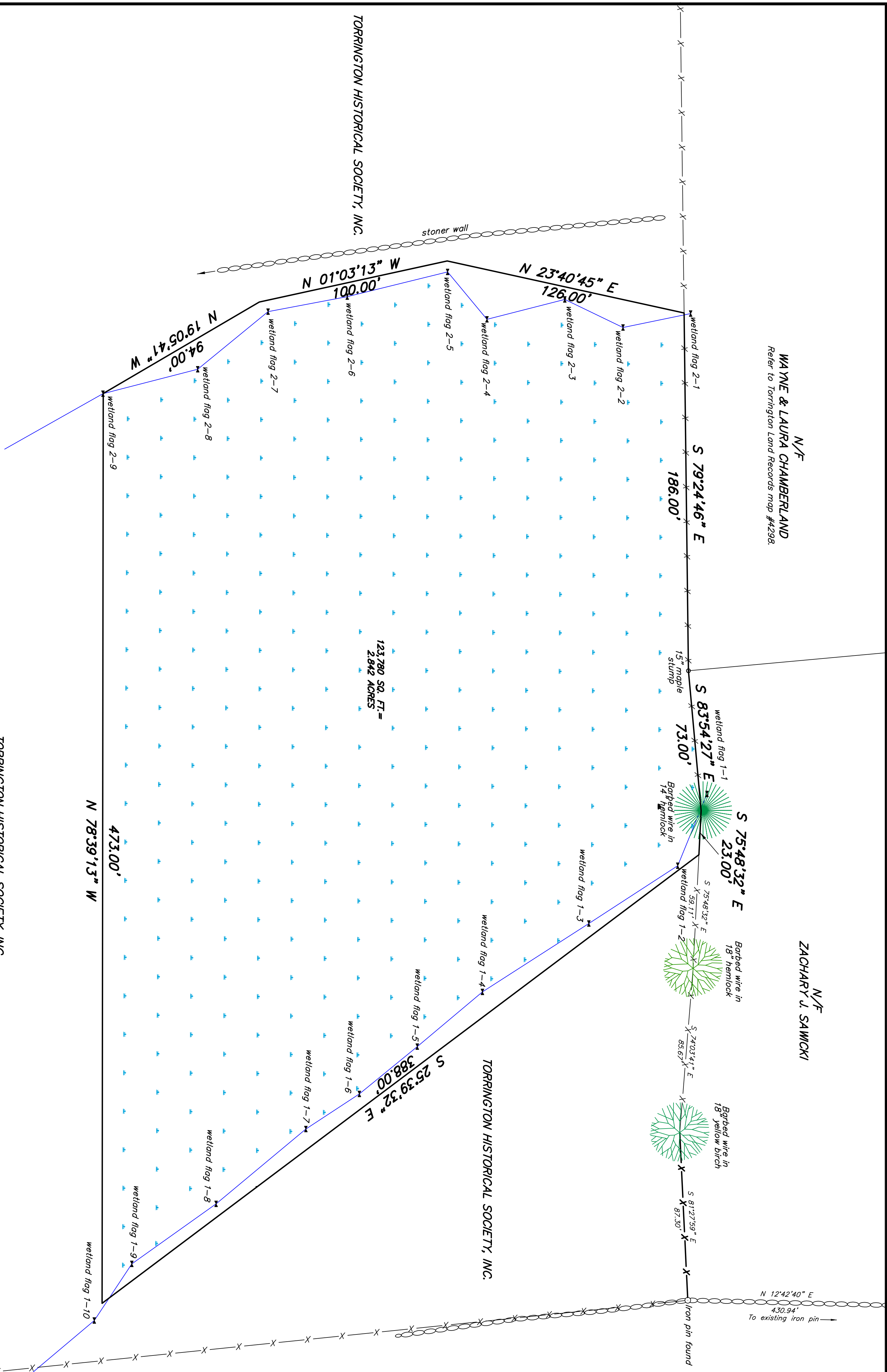
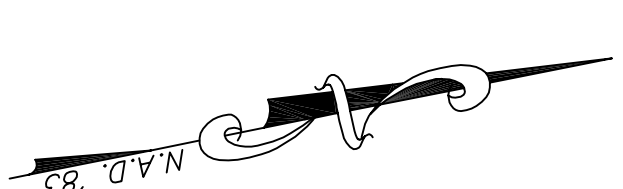


N/F
WYME & LAURA CHAMBERLAND
Refer to Torrington Land Records map #4298.

N/F
ZACHARY J. SAWICKI

N/F
CITY OF TORRINGTON
Refer to Torrington Land Records map #5578.



TORRINGTON HISTORICAL SOCIETY, INC.
Refer to map prepared by Douglas G. Little, P.E. & L.S.

wetland flag 1-12

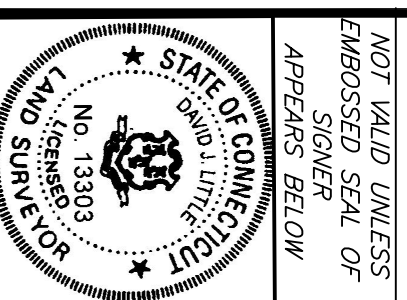
MAP SHOWING AREA OF PROPOSED
WETLANDS CROSSING OVER PROPERTY
OWNED BY
THE TORRINGTON HISTORICAL SOCIETY, INC.

OFF JOHN BROWN ROAD
TORRINGTON, CONNECTICUT

SCALE: 1" = 30'
DECEMBER 2021
David J. Little, Licensed Land Surveyor

NOTE: THE WETLANDS WERE DELINEATED BY IAN COLE,
SOIL SCIENTIST.

This survey and map has been prepared in accordance with Sections 20-300b-1 through 20-300b-20 of the Regulations of Connecticut State Agencies "Minimum Standards for Surveys and Maps in the State of Connecticut," as endorsed by the Connecticut Association of Land Surveyors, Inc. It is a DEPENDENT RESURVEY conforming with CLASS A-2 HORIZONTAL ACCURACY STANDARDS.
To my knowledge and belief, this map is substantially correct as noted herein.



DAVID J. LITTLE, LICENSED LAND SURVEYOR #13303 TORRINGTON, CT
25 COUNTRY CLUB ROAD TORRINGTON, CONNECTICUT 06049.0821 djlittle@aol.com