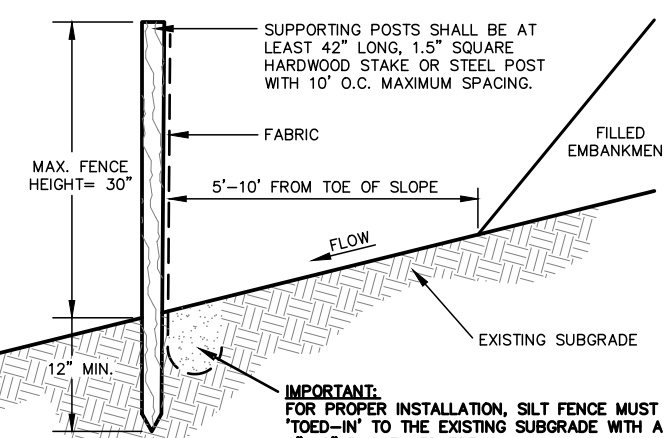
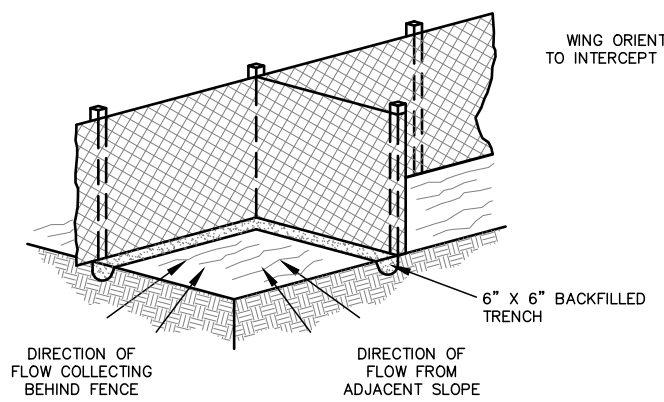


DETAIL OF FENCE JOINT (TOP VIEW)

- POSITION POSTS TO OVERLAP AS SHOWN MAKING CERTAIN THAT THE FABRIC FOLDS AROUND EACH POST ONE FULL TURN  
- DRIVE POSTS TIGHTLY TOGETHER AND SECURE TOPS OF POSTS BY TYING OFF WITH CORD OR WIRE TO PREVENT FLOW-THROUGH OF BUILT-UP SEDIMENT AT JOINT.



INSTALLATION SECTION



WING DETAIL (IF REQUIRED BY ENGINEER)

**GEOSYNTHETIC SILT FENCE DETAIL**

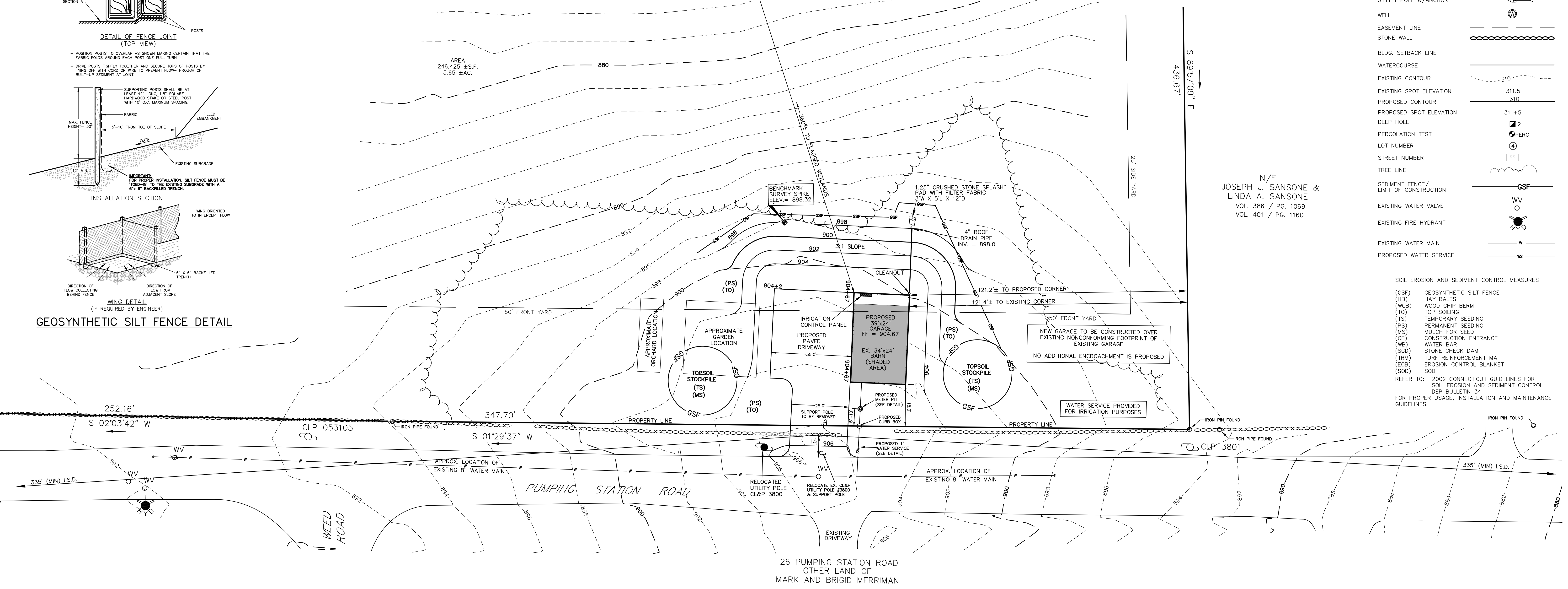
**LEGEND**

PROPERTY LINE	○
EXISTING IRON PIN OR PIPE	◻
PROPOSED MONUMENT	◼
DRILL HOLE	⊙
UTILITY POLE W/ANCHOR	⊕
WELL	⊗
EASEMENT LINE	— — —
STONE WALL	— — — — —
BLDG. SETBACK LINE	— — — — —
WATERCOURSE	— — — — —
EXISTING CONTOUR	— · — · — · — · —
EXISTING SPOT ELEVATION	311.5
PROPOSED CONTOUR	310
PROPOSED SPOT ELEVATION	311+5
DEEP HOLE	⊕ 2
PERCOLATION TEST	⊕ PERC
LOT NUMBER	Ⓛ
STREET NUMBER	55
TREE LINE	— — — — —
SEDIMENT FENCE/LIMIT OF CONSTRUCTION	— GSF —
EXISTING WATER VALVE	⊕
EXISTING FIRE HYDRANT	⊕
EXISTING WATER MAIN	— W —
PROPOSED WATER SERVICE	— WS —

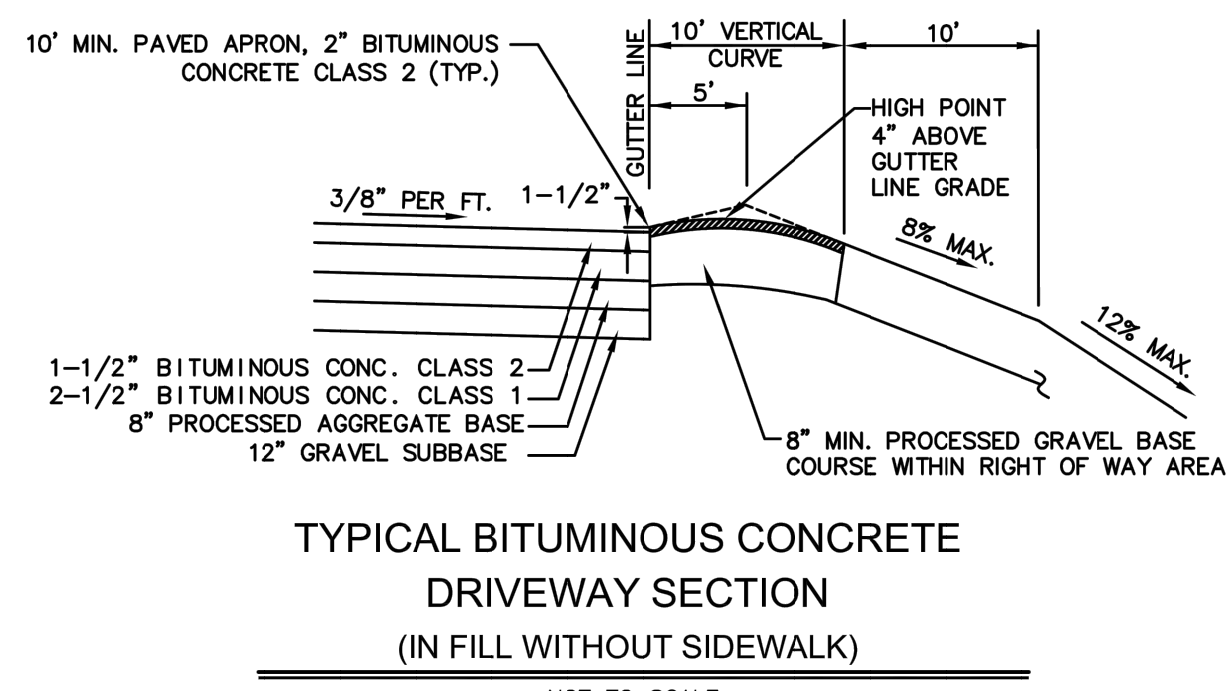
**SOIL EROSION AND SEDIMENT CONTROL MEASURES**

(GSF) GEOSYNTHETIC SILT FENCE  
(HB) HAY BALES  
(WCB) WOOD CHIP BERM  
(TO) TOP SOILING  
(TS) TEMPORARY SEEDING  
(PFS) PERMANENT SEEDING  
(MS) MULCH FOR SEED  
(CE) CONSTRUCTION ENTRANCE  
(WB) WATER BAR  
(SCD) STONE CHECK DAM  
(TRM) TURF REINFORCEMENT MAT  
(ECB) EROSION CONTROL BLANKET  
(SOD) SOD

REFER TO: 2002 CONNECTICUT GUIDELINES FOR SOIL EROSION AND SEDIMENT CONTROL DEP BULLETIN 34 FOR PROPER USAGE, INSTALLATION AND MAINTENANCE GUIDELINES.

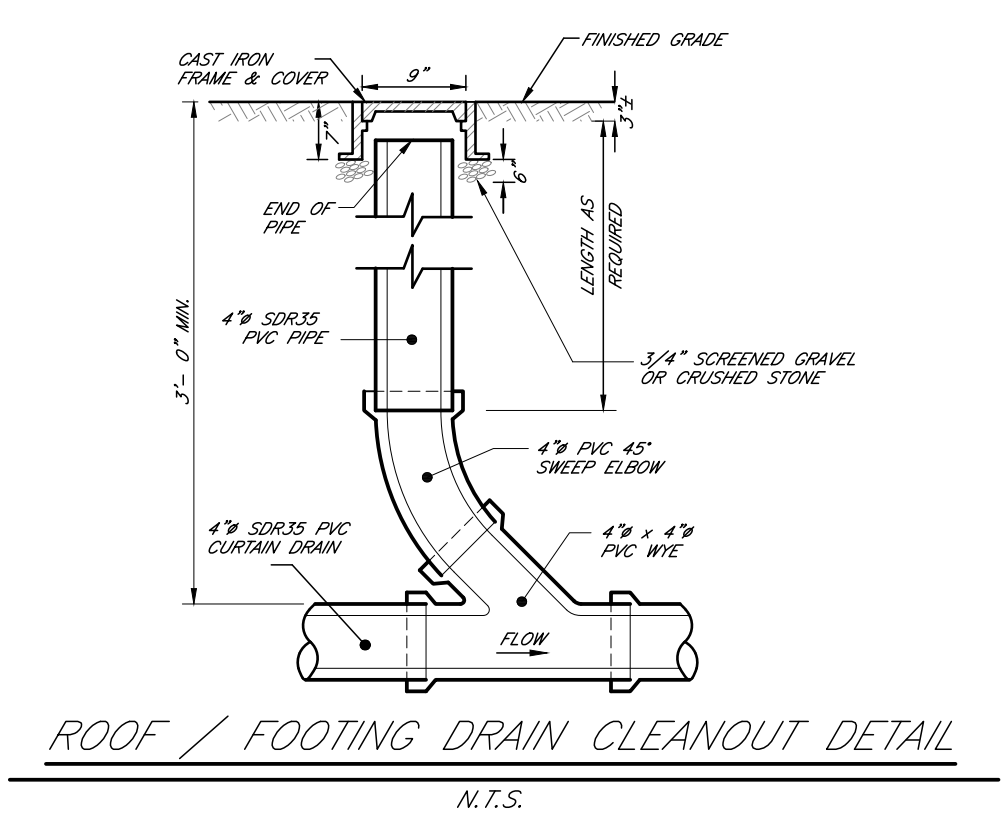


N/F  
**JOSEPH J. SANSONE &  
LINDA A. SANSONE**  
VOL. 386 / PG. 1069  
VOL. 401 / PG. 1160

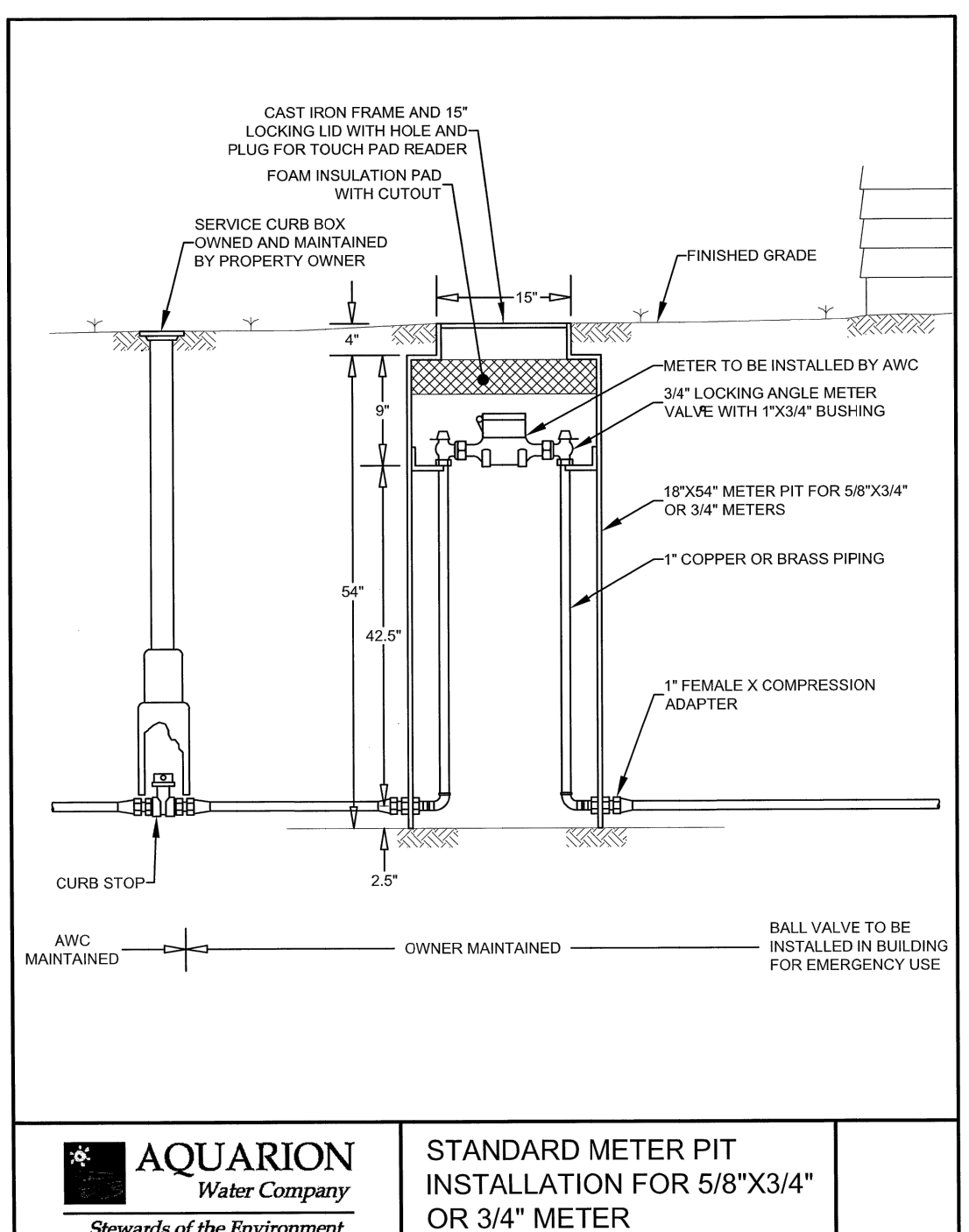


TYPICAL BITUMINOUS CONCRETE DRIVEWAY SECTION (IN FILL WITHOUT SIDEWALK)  
NOT TO SCALE

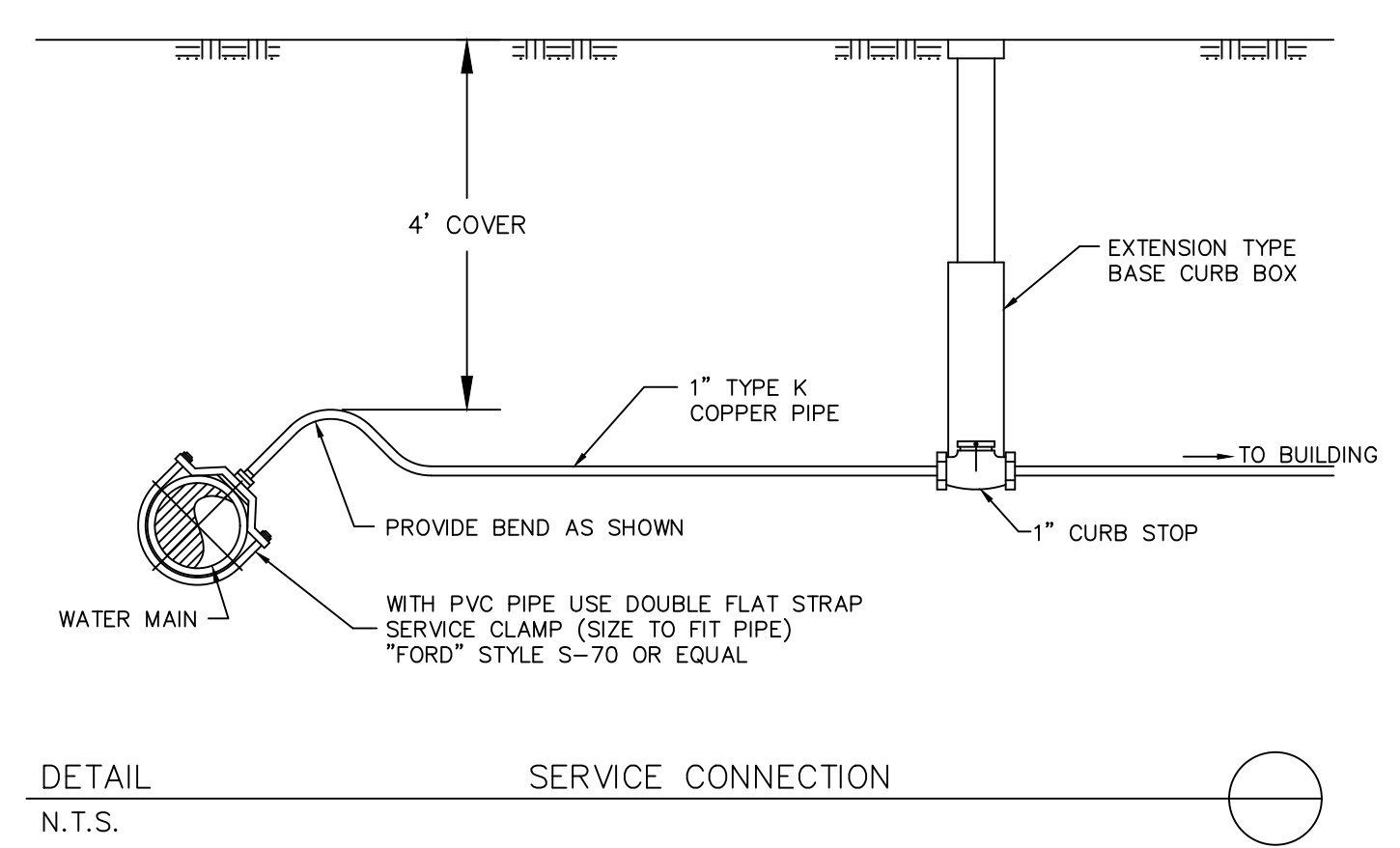
NOTE:  
DRAINAGE IMPROVEMENTS INCLUDING THE ADDITION OF SWALES, CATCH BASINS, PIPE CULVERTS, RIP RAP AND UNDERDRAINS MAY BE REQUIRED AS A CONDITION OF DRIVEWAY PENDING CITY REVIEW OF SITE CONDITIONS.  
ALSO, ROAD SHOULDER MAY NEED TO BE CLEARED OF SIGHT LINE OBSTRUCTIONS INCLUDING EXCAVATING EMBANKMENT WHERE APPLICABLE.



ROOF / FOOTING DRAIN CLEANOUT DETAIL  
N.T.S.



STANDARD METER PIT INSTALLATION FOR 5/8"X3/4" OR 3/4" METER



SERVICE CONNECTION  
N.T.S.

04-08-21 PROPOSED BUILDING DIMENSIONS  
DATE REVISION

**SITE PLAN**

PREPARED FOR  
**MARK MERRIMAN**  
PUMPING STATION ROAD  
TORRINGTON, CONNECTICUT

**Hrica Associates LLC**  
**Engineers** **Surveyors**

Kenneth S. Hrica, PE, RLS  
44 Maple View Trail  
P.O. Box 1981  
Litchfield, Connecticut 06759

860-567-2112 (business)  
860-567-0491 (toll-free)  
e-mail: hricassociates@optonline.net

DATE: 03/22/2021 MAP #: 0795  
SCALE: 1"=20 ft. SHEET #: C1  
DRAWING: 210795 DRAWN BY: TJS  
PROJECT #: 21-0795 CHECKED BY: KSH