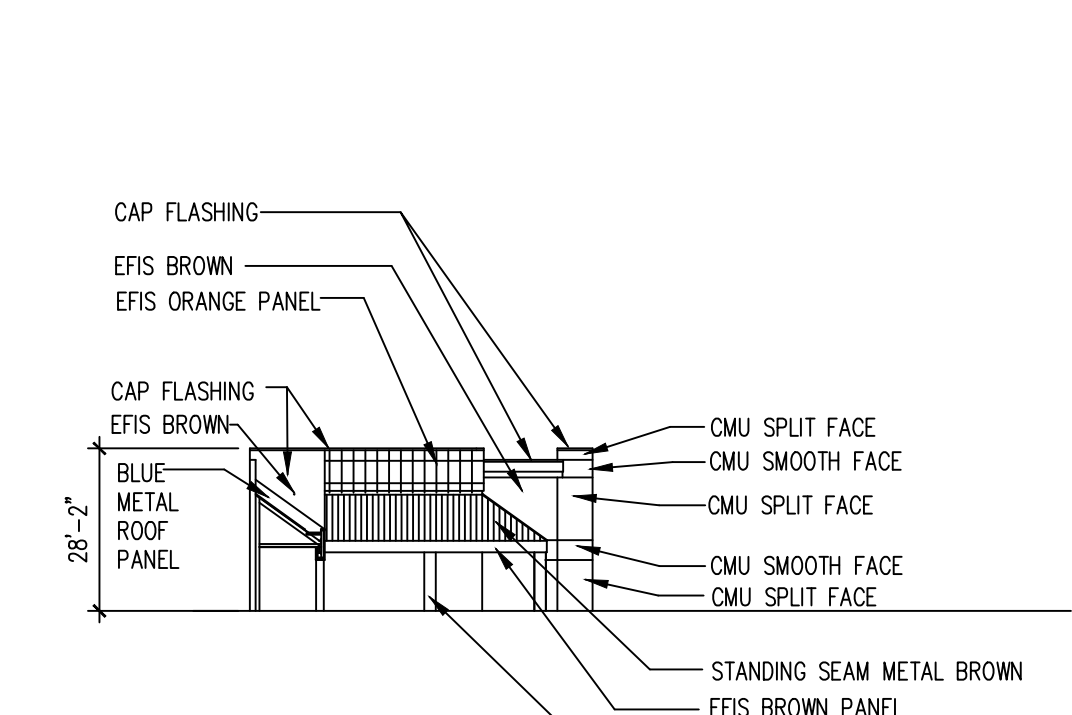
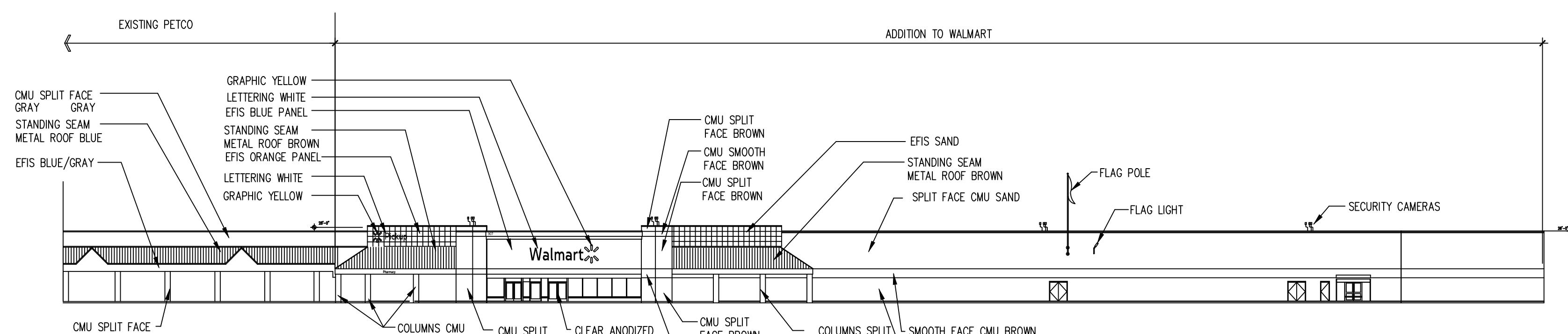


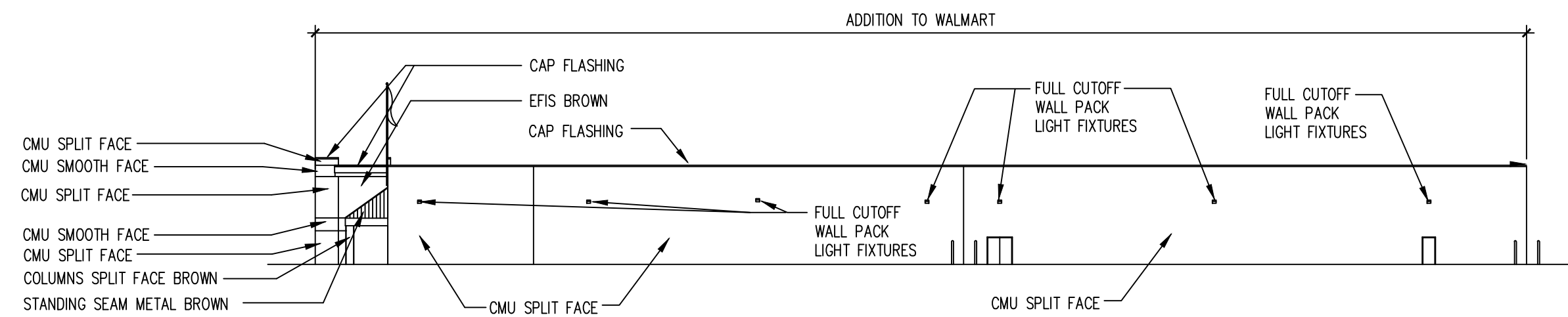
1 FLOOR PLAN
PZ1 1/16"=1'-0"



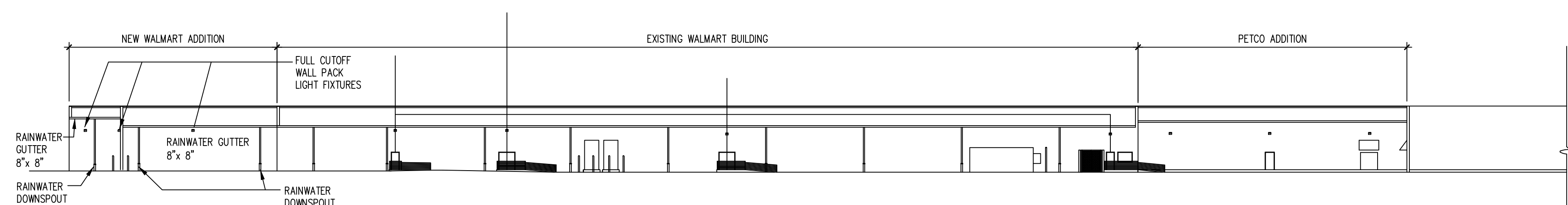
2 NORTH BUILDING ELEVATION
PZ1 1/16"=1'-0"



3 WEST BUILDING ELEVATION
PZ1 1/16"=1'-0"



4 SOUTH BUILDING ELEVATION
PZ1 1/16"=1'-0"



5 EAST BUILDING ELEVATION
PZ1 1/16"=1'-0"