

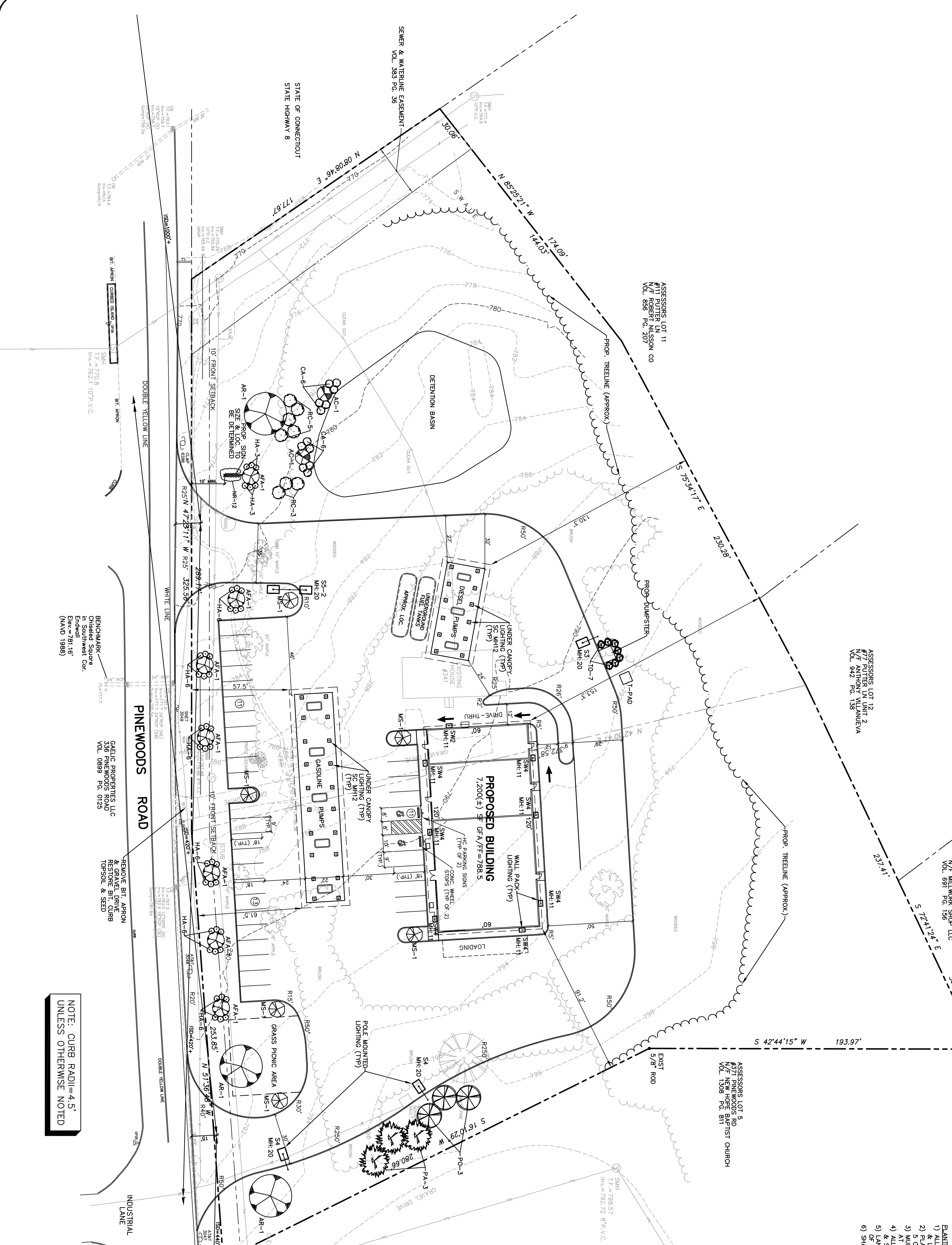
Symbol	Qty	Label	Arrangement	Unit	Notes	Notes
1	1	SS-1	SINGLE	102	102	102
2	1	SS-2	SINGLE	102	102	102
3	1	SS-3	SINGLE	102	102	102
4	1	SS-4	SINGLE	102	102	102
5	1	SS-5	SINGLE	102	102	102
6	1	SS-6	SINGLE	102	102	102
7	1	SS-7	SINGLE	102	102	102
8	1	SS-8	SINGLE	102	102	102
9	1	SS-9	SINGLE	102	102	102
10	1	SS-10	SINGLE	102	102	102
11	1	SS-11	SINGLE	102	102	102
12	1	SS-12	SINGLE	102	102	102
13	1	SS-13	SINGLE	102	102	102
14	1	SS-14	SINGLE	102	102	102
15	1	SS-15	SINGLE	102	102	102
16	1	SS-16	SINGLE	102	102	102
17	1	SS-17	SINGLE	102	102	102
18	1	SS-18	SINGLE	102	102	102
19	1	SS-19	SINGLE	102	102	102
20	1	SS-20	SINGLE	102	102	102
21	1	SS-21	SINGLE	102	102	102
22	1	SS-22	SINGLE	102	102	102
23	1	SS-23	SINGLE	102	102	102
24	1	SS-24	SINGLE	102	102	102
25	1	SS-25	SINGLE	102	102	102
26	1	SS-26	SINGLE	102	102	102
27	1	SS-27	SINGLE	102	102	102
28	1	SS-28	SINGLE	102	102	102
29	1	SS-29	SINGLE	102	102	102
30	1	SS-30	SINGLE	102	102	102
31	1	SS-31	SINGLE	102	102	102
32	1	SS-32	SINGLE	102	102	102
33	1	SS-33	SINGLE	102	102	102
34	1	SS-34	SINGLE	102	102	102
35	1	SS-35	SINGLE	102	102	102
36	1	SS-36	SINGLE	102	102	102
37	1	SS-37	SINGLE	102	102	102
38	1	SS-38	SINGLE	102	102	102
39	1	SS-39	SINGLE	102	102	102
40	1	SS-40	SINGLE	102	102	102
41	1	SS-41	SINGLE	102	102	102
42	1	SS-42	SINGLE	102	102	102
43	1	SS-43	SINGLE	102	102	102
44	1	SS-44	SINGLE	102	102	102
45	1	SS-45	SINGLE	102	102	102
46	1	SS-46	SINGLE	102	102	102
47	1	SS-47	SINGLE	102	102	102
48	1	SS-48	SINGLE	102	102	102
49	1	SS-49	SINGLE	102	102	102
50	1	SS-50	SINGLE	102	102	102

Grid Leds / Foot Candles
 Lighting Analysis
 www.lightingefficiency.com
 Email Address: greg@lightingefficiency.com
 Reply: Bill, CT 06067

PRIOR TO BACKFILLING ANY ISLANDS REQUIRING TREES, ANY GRAVEL OR MATERIAL USED IN THE CONSTRUCTION OF THE PLANTING AREAS SHALL BE REMOVED BY THE SITE CONTRACTOR, TO A MINIMUM DEPTH OF 2 (TWO FEET), & REPLACED WITH TOPSOIL BY THE SITE CONTRACTOR. ANY AREAS TO BE PLANTED WITH SHRUBS &/OR PERENNIALS SHALL HAVE AN UNSUITABLE MATERIAL REMOVED, BY THE SITE CONTRACTOR, TO A MINIMUM DEPTH OF 18 (EIGHTEEN INCHES), & REPLACED WITH TOPSOIL BY THE SITE CONTRACTOR.

KEY	QUANT.	COMMON NAME	BOTANICAL NAME	SIZE
AFA	7	ARMSTRONG RED MAPLE	ACER X FREDERICK ARMSTRONG	2 1/2"-3" CAL.
AR	3	RED MAPLE	ACER RUBRA	2 1/2"-3" CAL.
HA	42	SMOOTHLEAF HYDRANGEA	HYDRANGEA ARBORESCENS 'INCREDIBALL'	3 GAL.
NR	12	CATMINT	NEPETA FACONOSA 'BLUE WONDER'	1 GAL.
CA	12	SUMMERSWEET	CLETHRA ANTIOLA 'HUMMINGBIRD'	2 1/2"-3" HT.
AC	2	SHADBLow	AMELANCHIER CANADENSIS 'PRINCE WILLIAM'	5'-6" HT.
TO	7	EMERALD GREEN ARBORVITAE	THUJA OCCIDENTALIS 'SMARAGD'	6'-7" HT.
PA	3	NORWAY SPRUCE	PICEA ABIES	5'-6" HT.
PO	3	SERBIAN SPRUCE	PICEA OMORICA	5'-6" HT.
MS	6	WHITE FLOWERING CRABAPPLE	MALUS SNOWDRIFT	2'-2 1/2" CAL.
RC	8	CATAMBA RHODODENDRON	RHODO. CATAMBENSE 'ENGLISH ROSEAU'	24"-30"

- PLANTING NOTES:
- 1) MATERIALS SHALL CONFORM TO THE GUIDELINES ESTABLISHED BY THE AMERICAN NURSERY & LANDSCAPE ASSOCIATION.
 - 2) PLANTING SOIL MIX SHALL CONSIST OF LOAM THOROUGHLY INCORPORATED WITH COMPOST PROPORTIONED 5 CUBIC FEET PER 100 CUBIC FEET OF SOIL.
 - 3) ALL OTHER DISTURBED AREAS, NOT COVERED BY BY BURLINGS, PAVEMENT, ETC., SHALL BE GRADED & SEED TO LAWN, WEDDOW, WILDFLOWER, ETC., AS DIRECTED BY THE OWNER.
 - 4) ALL OTHER DISTURBED AREAS, NOT COVERED BY BY BURLINGS, PAVEMENT, ETC., SHALL BE GRADED & SEED TO LAWN, WEDDOW, WILDFLOWER, ETC., AS DIRECTED BY THE OWNER.
 - 5) OF ACCEPTANCE, PROPER LANDSCAPE MAINTENANCE SHALL BE THE RESPONSIBILITY OF THE OWNER.
 - 6) SHADE TREES SHALL HAVE A BRANCHING HEIGHT OF FIVE (5') MINIMUM.



NOTE: CURB RADI=4.5'
 UNLESS OTHERWISE NOTED

LANDSCAPE, LIGHTING, & LAYOUT PLAN

SCALE: 1" = 30'

PROJECT: TORRINGTON FARMS SERVICE CENTER
 341 PINEWOODS ROAD, TORRINGTON, CT 06790

DRAWN BY: G.R.W. APPROVED BY: A.R.B.
 DATE: 05-04-21 SCALE: AS NOTED

2155 EAST MAIN STREET TORRINGTON, CT 06790
 860-482-7613; WEB: WWW.BORGHESIBUILDING.COM

REVISIONS:

05-04-21 REV. 1: ADD LIGHTING INFO.
 06-08-21 REV. 2: PER CITY COMMENTS (MEMO FROM M. CONNOR, CITY PLANNER, DATED 06-01-21; STAFF COMMENTS FROM OTHER RELEVANT CITY DEPTS.)

SEAL