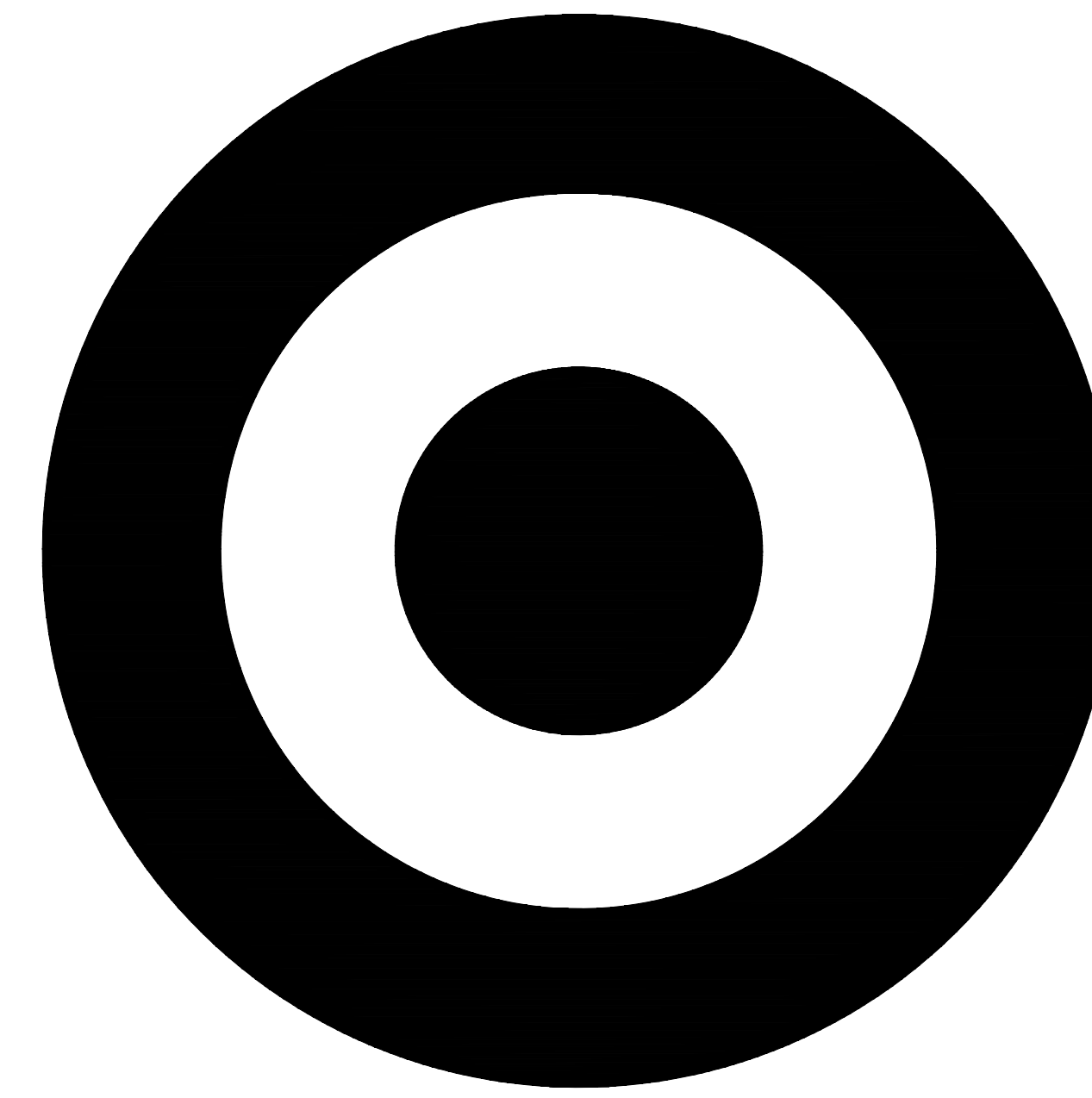


Plotted By: Schlueter, Noble - Sheet: 811 - Layout: 05 - January 05, 2022 07:39:04am - C:\Users\Noble.Schlueter\OneDrive - KIM\Documents\T-Stores\2305 Torrington CT\CADD\T2305 Torrington CT\CADD\T2305 DriveUp Expansion.dwg  
 This document, together with the concepts and designs presented herein, is an instrument of service, is intended only for the specific purpose and client for which it was prepared. Reuse or any improper reliance on this document without written authorization and approval by Kimley-Horn and Associates, Inc. will be without liability to Kimley-Horn and Associates, Inc.



# TARGET®

## DRIVE UP EXPANSION T-2305 TORRINGTON 1922 E MAIN ST TORRINGTON, CT 06790

### SCOPE OF WORK

PARKING LOT RE-STRIPING, STALL PARKING SIGNAGE AND WAYFINDING DRIVE UP BEACONS WHERE SHOWN ON THE PLAN.

### ZONING

CIR

### OFF-STREET PARKING LOT CODE REQUIREMENTS

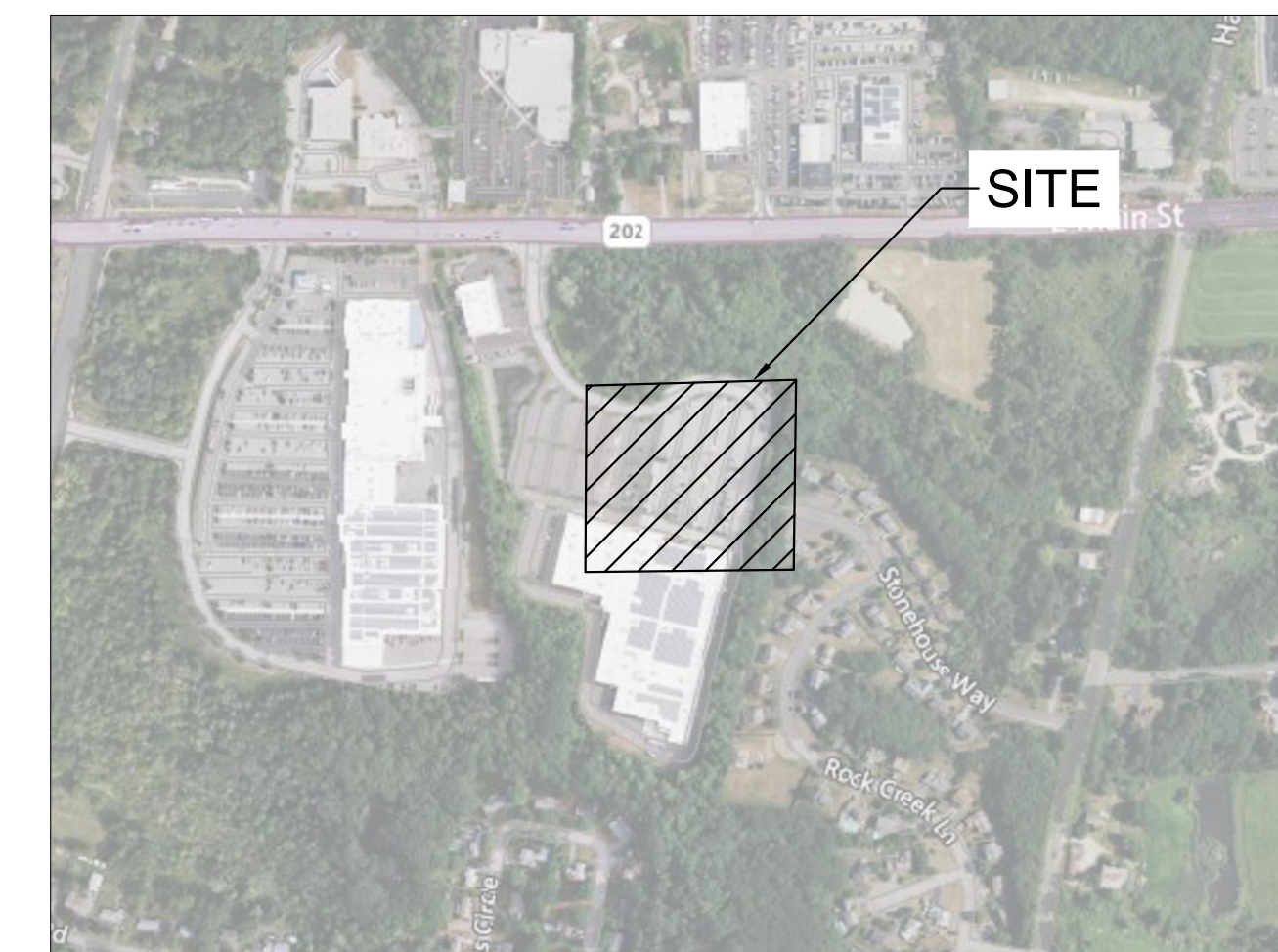
- DRIVE AISLE = 24' MIN. WIDTH
- STANDARD PARKING STALL = 9' X 18' MIN.

### OWNER

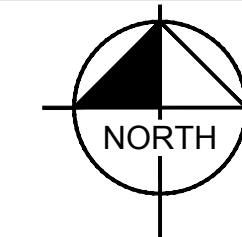
TARGET CORP.  
CONTACT: MATTHEW FLANSBURG  
50 SOUTH 10TH ST, SUITE 400  
MINNEAPOLIS, MN, 55403  
MATTHEW.FLANSBURG@TARGET.COM

### CIVIL ENGINEER

KIMLEY-HORN  
CONTACT: JUSTIN BECKER P.E.  
401 B ST, SUITE 600  
SAN DIEGO, CA, 92101  
619-234-9411  
JUSTIN.BECKER@KIMLEY-HORN.COM

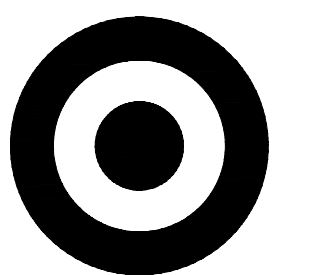


VICINITY MAP  
NTS



### SHEET INDEX

COVER SHEET.....	C0.0
OVERALL SITE PLAN.....	C0.1
IMPROVEMENT PLAN.....	C1.0
DETAILS.....	C2.0 - C2.1



**TARGET®**  
1000 NICOLLET MALL  
MINNEAPOLIS, MN 55403

**Kimley»Horn**

© 2021 KIMLEY-HORN AND ASSOCIATES, INC.  
1 NORTH LEXINGTON AVE., STE 505  
WHITE PLAINS, NY 10601  
PHONE: 914-368-9200  
WWW.KIMLEY-HORN.COM

Date	No	Description



DATE: 01/05/2022

Project Number	T-2305
Config:	
Drawn By	NS
Checked By	KR

COVER SHEET

C0.0

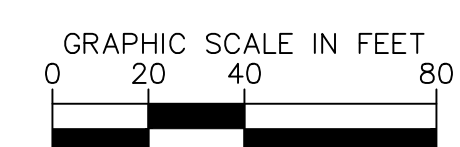
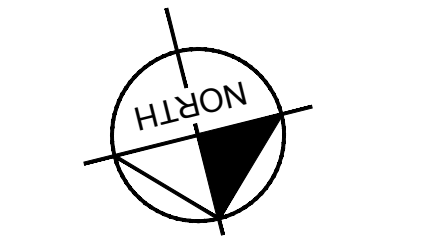






IMAGE SOURCE: NEARMAP US, INC.

OVERALL SITE PLAN  
1" = 40'



Plotted By: Schlueter, Noble - Sheet: 811 - Layout: 00.1 - January 05, 2022 - 07:59:10am - C:\Users\Noble.Schlueter\OneDrive - KIMLEY-HORN AND ASSOCIATES, INC. Documents\T-2305 Torrington - 811 Documents\T-2305 Torrington - 811 Documents\T-2305 Drive Up Expansion.dwg



TARGET  
1000 NICOLLET MALL  
MINNEAPOLIS, MN 55403

Kimley»Horn

© 2021 KIMLEY-HORN AND ASSOCIATES, INC.  
1 NORTH LEXINGTON AVE, STE 505  
WHITE PLAINS, NY 10601  
PHONE: 914-368-9200  
WWW.KIMLEY-HORN.COM

Date	No	Description



DATE: 01/05/2022

**TARGET**  
T-2305 TORRINGTON  
1922 E MAIN ST  
TORRINGTON, CT 06790

Project Number	T-2305
Config:	
Drawn By	NS
Checked By	KR

OVERALL SITE PLAN



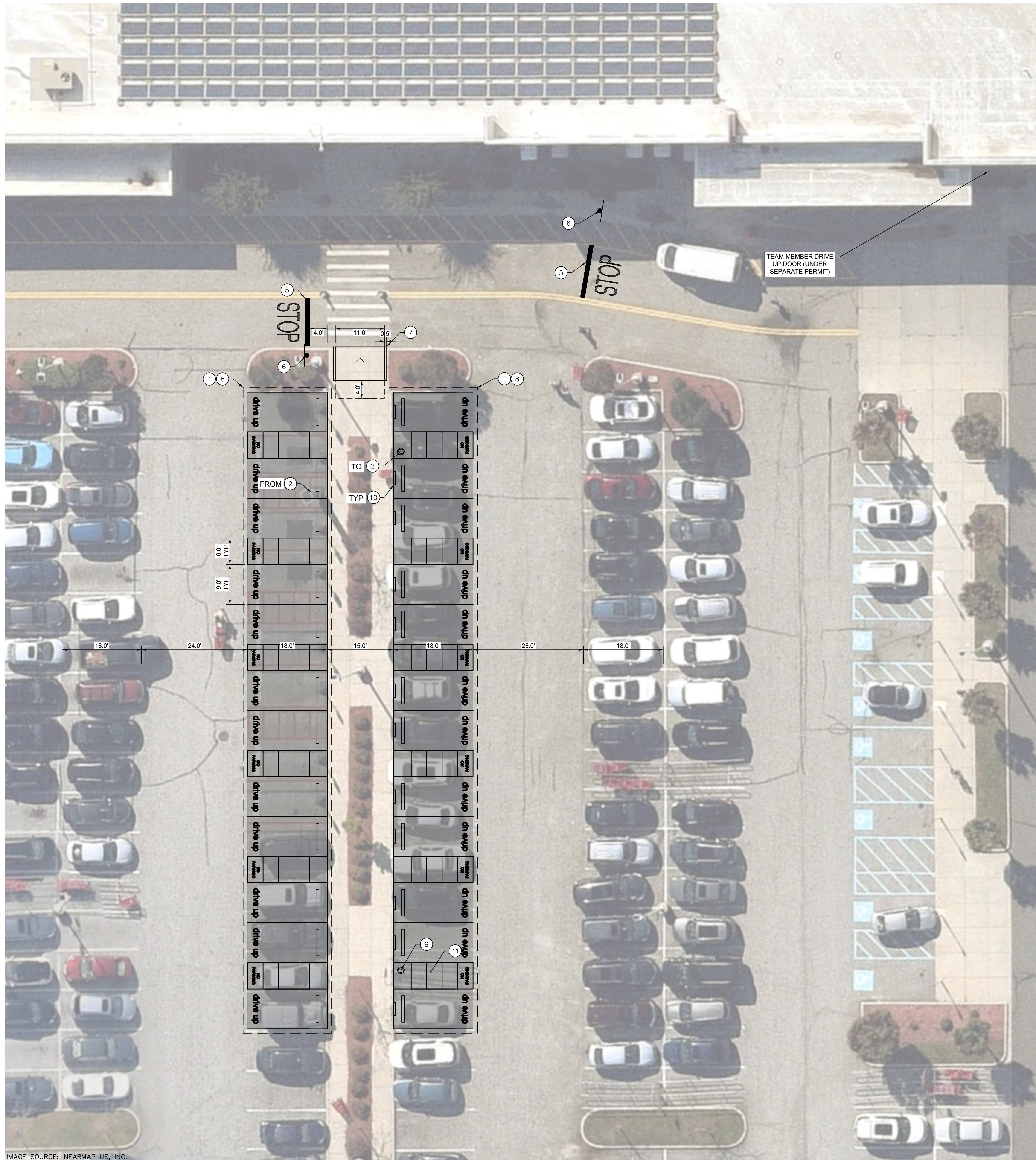
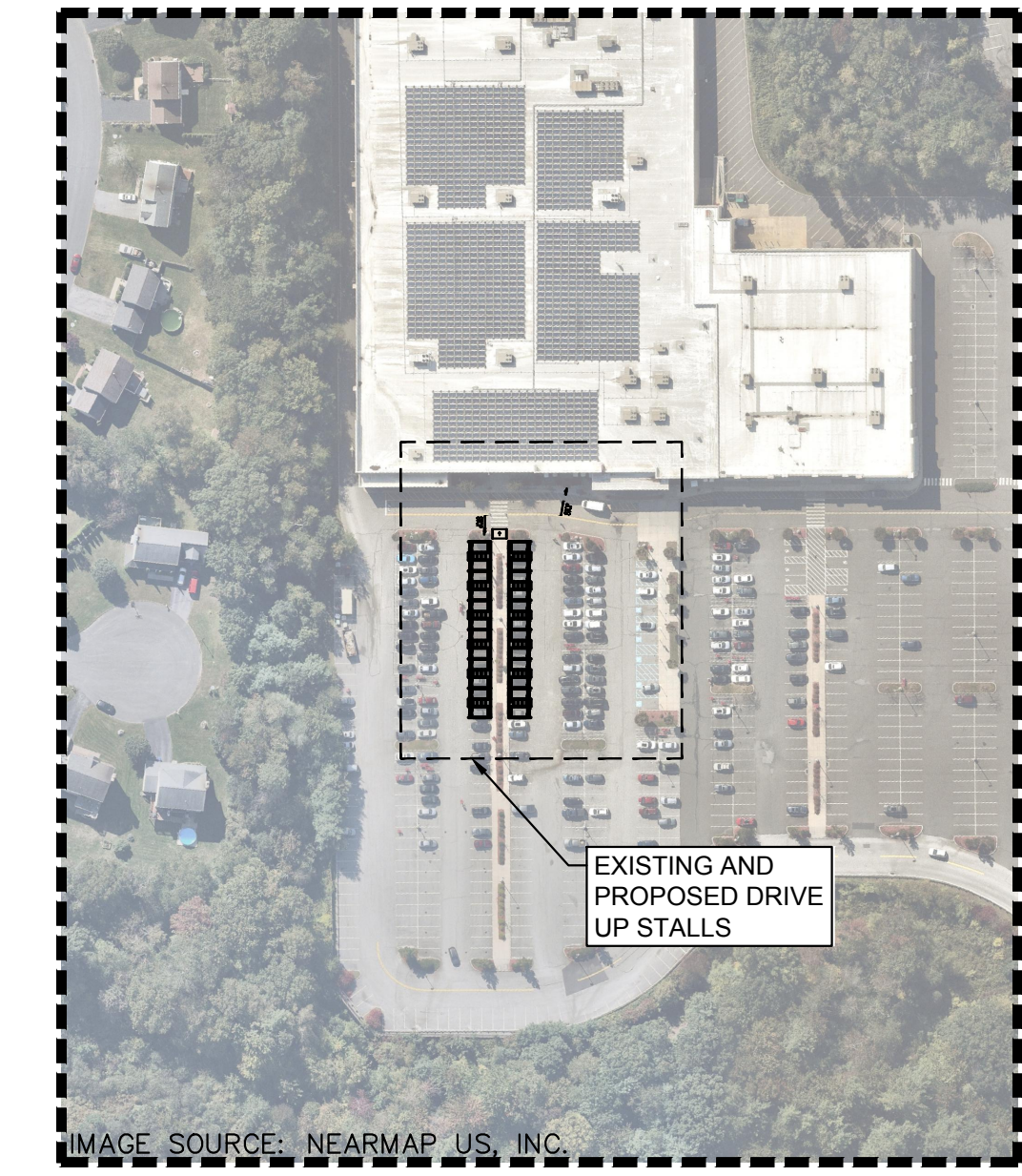


IMAGE SOURCE: NEARMAP US, INC.

IMPROVEMENT PLAN FOR EXISTING AND PROPOSED DRIVE UP STALLS  
1" = 10'



KEY MAP  
1" = 150'

### CONSTRUCTION NOTES

- 1 REMOVE EXISTING STRIPING AND DRIVE UP SIGNAGE.
- 2 REMOVE AND RELOCATE EXISTING DRIVE UP BEACON.
- 5 INSTALL STOP BAR AND MARKING PER DETAILS SHEET.
- 6 INSTALL STOP SIGN PER DETAILS SHEET.
- 7 INSTALL CURB RAMP PER DETAILS SHEET.
- 8 INSTALL DRIVE UP STRIPING AND SIGNAGE PER DETAILS SHEET.
- 9 INSTALL DRIVE UP BEACON PER DETAILS SHEET.
- 10 INSTALL STANCHION SIGN AND BASE PER DETAILS SHEET.
- 11 REMOVE AND SALVAGE EXISTING CART CORRALS. CONTRACTOR TO COORDINATE RELOCATION WITH TARGET.

Date	No	Description

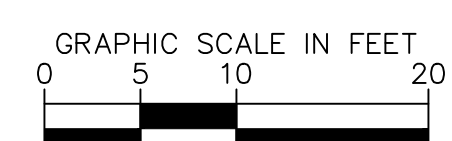
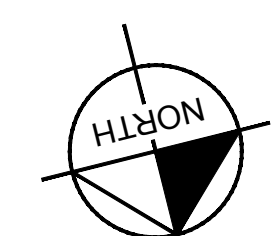


DATE: 01/05/2022

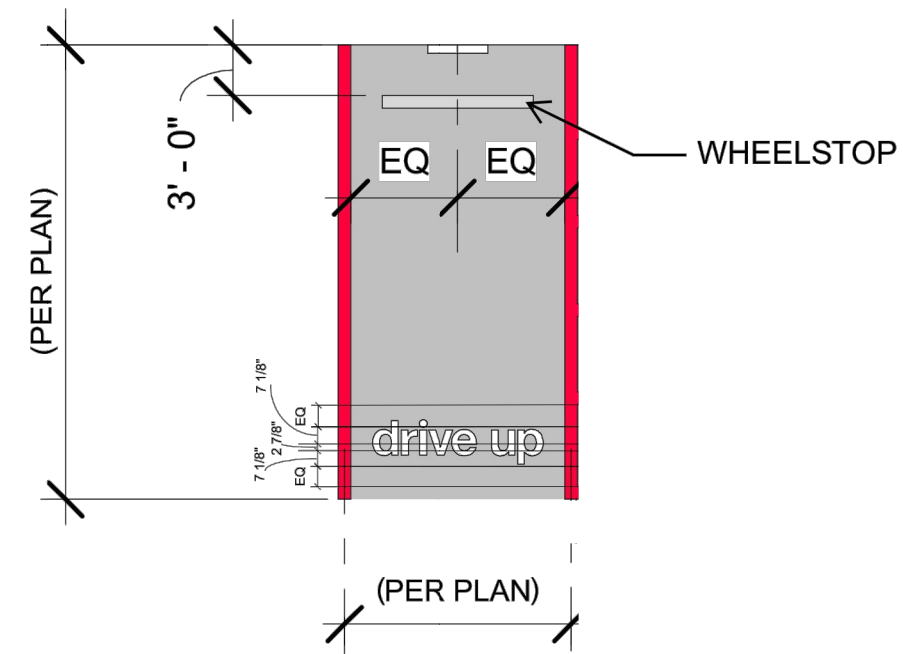
**TARGET**  
 T-2305 TORRINGTON  
 1922 E MAIN ST  
 TORRINGTON, CT 06790

Project Number	T-2305
Config:	
Drawn By	NS
Checked By	KR

IMPROVEMENT PLAN



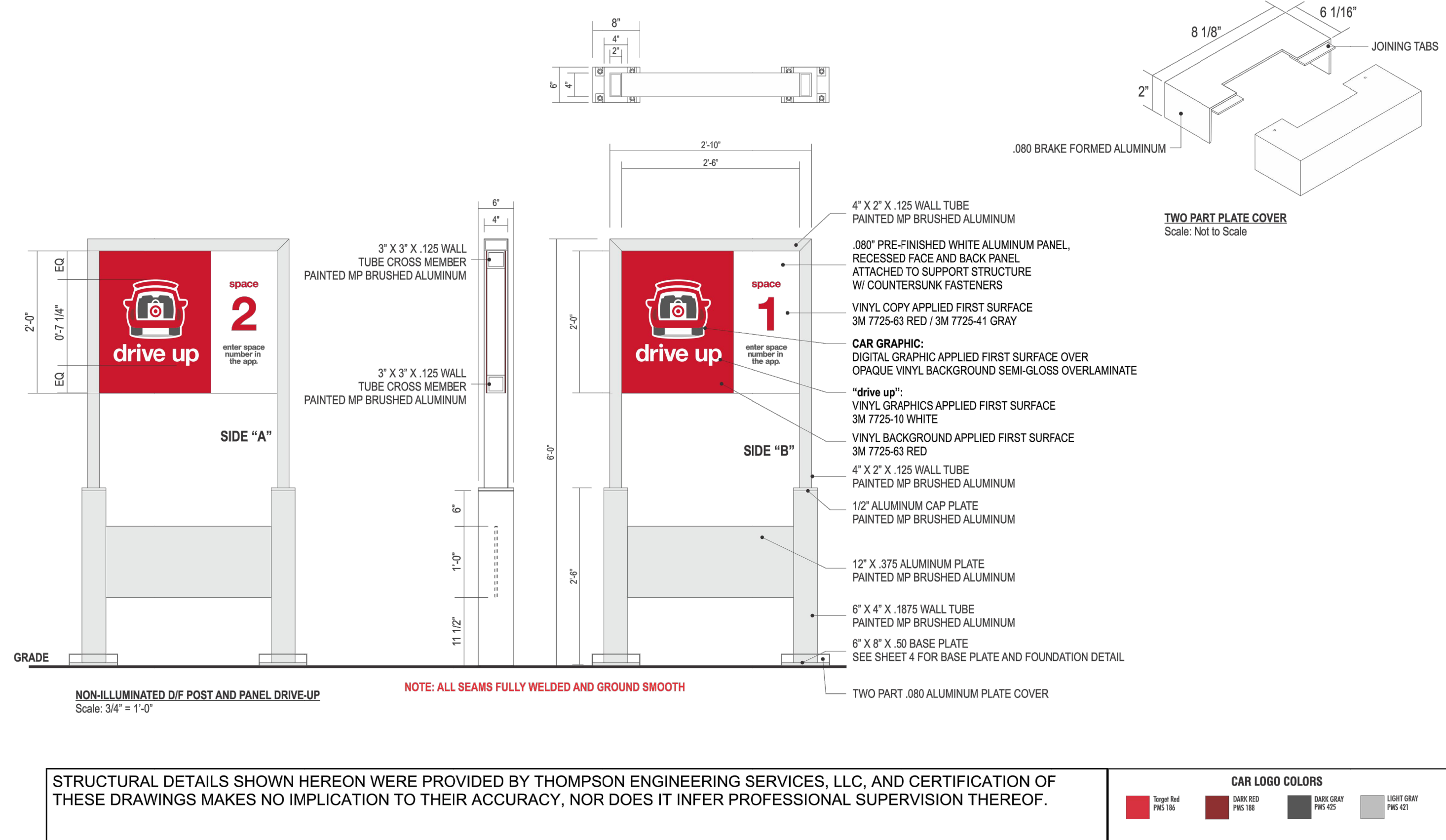




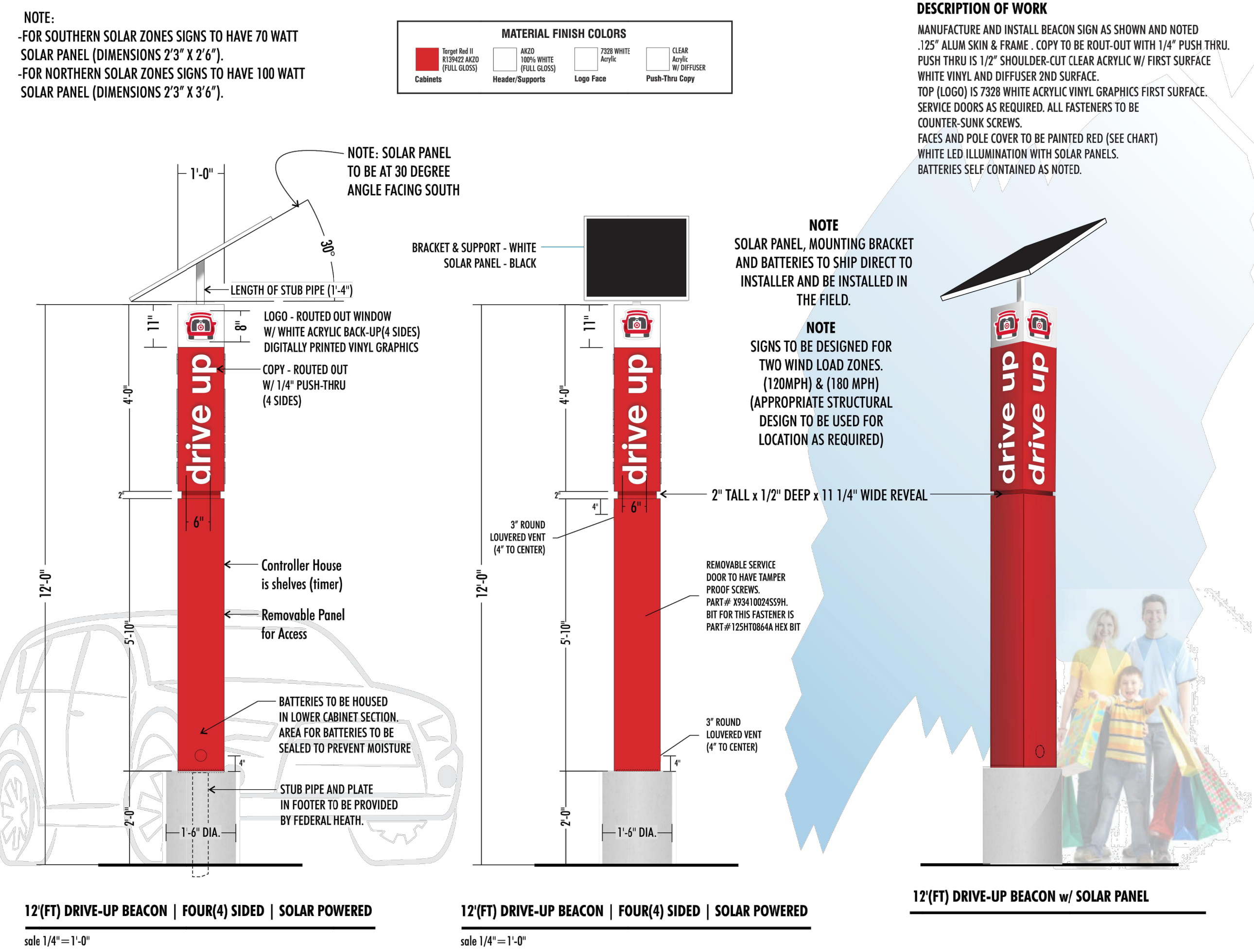
**NOTES:**

1. ALL RED STRIPING IS 6" WIDE TARGET TO PROVIDE GC WITH "drive up" AND "NO PARKING" TEMPLATES
2. SEE PLAN VIEW DIMENSIONS FOR EXACT LAYOUT OF SITE
3. REFER TO C1.0 FOR EXACT DIMENSIONS

**DRIVE UP STRIPING**  
N.T.S.



**STANCHION SIGN POST AND BASE - DOUBLE SIDE**  
N.T.S.



**SOLAR DRIVE UP BEACON**  
N.T.S.



DATE: 01/05/2022

**TARGET**  
T-2305 TORRINGTON  
1922 E MAIN ST  
TORRINGTON, CT 06790

Project Number: **T-2305**  
Config:  
Drawn By: **NS**  
Checked By: **KR**

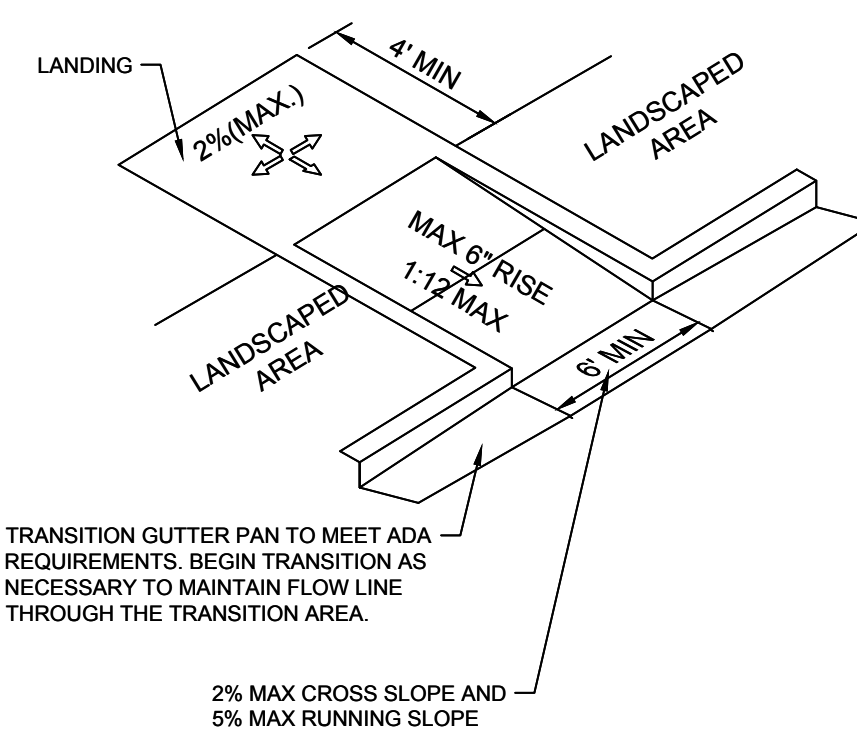
**DETAILS**

C2.0



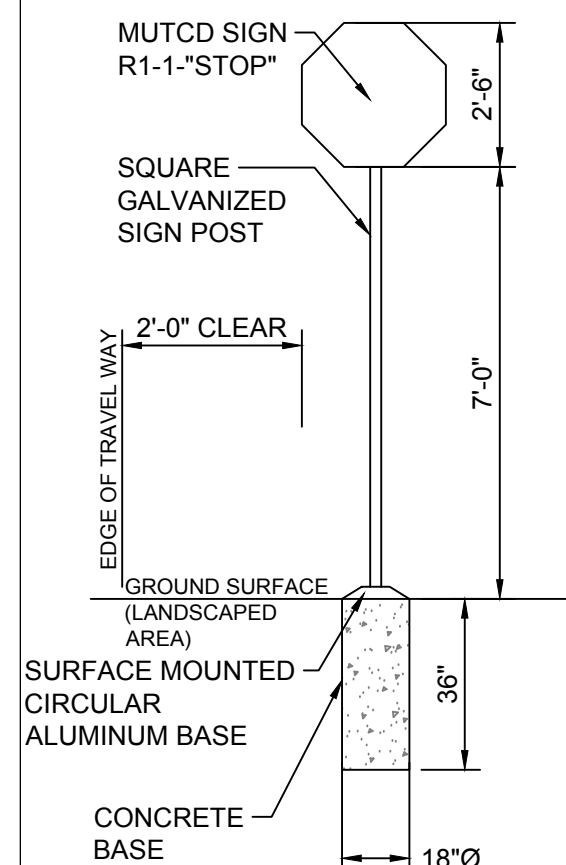
NOTES:

1. ALL ACCESSIBLE COMPONENTS CONSTRUCTED AS PART OF THESE PLANS SHALL COMPLY WITH THE LOCAL, STATE, AND FEDERAL REGULATIONS WHOEVER ARE MORE STRINGENT.
2. PUBLIC SIDEWALK CURB RAMPS CONSTRUCTED WITHIN A PUBLIC RIGHT-OF-WAY, IN ABSENCE OF LOCAL ROADWAY GUIDELINES, SHALL MEET OR EXCEED LOCAL REGULATIONS.
3. CURB RAMP SURFACES (FLARES AND RAMP) SHALL HAVE A DIFFERENT TEXTURE FROM THE SURROUNDING PAVEMENT.
4. CURB RAMPS SHALL BE CONCRETE WITH STRENGTH OF 2500 PSI.
5. INSTALL 1/4" EXPANSION JOINT FILLER MATERIAL BETWEEN A NEW CURB RAMP AND THE EXISTING SIDEWALKS.
6. WATER PONDING WITHIN THE CURB RAMP LIMITS IS NOT ALLOWED.
7. NO GRADE BREAK IS ALLOWED ALONG THE RAMP SURFACE.
8. CROSS SLOPE OF THE CURB RAMP SURFACE SHALL BE LESS THAN 2%.
9. TRANSITION CHANGE IN ELEVATION IS NOT TO EXCEED 1/2" WITHIN AN ACCESSIBLE ROUTE.
10. DIAGONAL CURB RAMP SIDE SLOPE VARIES UNIFORMLY FROM A MAXIMUM OF UP TO 10% AT CURB TO CONFORM WITH LONGITUDINAL SIDEWALK SLOPE ADJACENT TO TOP OF THE RAMP.



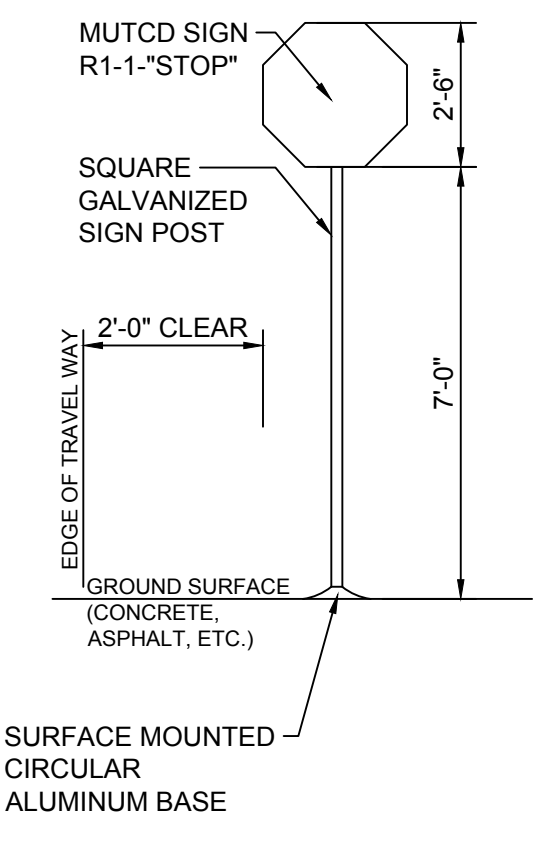
**IN-LINE CURB RAMP**

**CURB RAMP DETAILS**  
N.T.S.

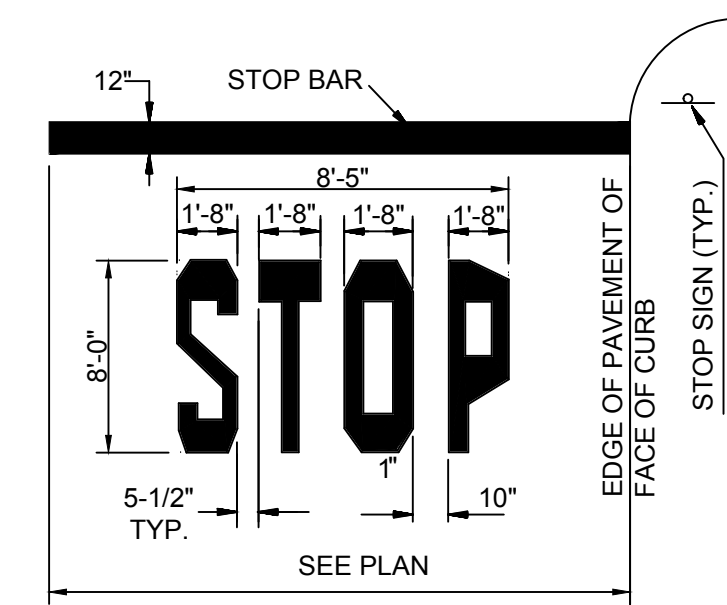


**CASE 1: LANDSCAPED AREA**

**STOP SIGN DETAIL**  
N.T.S.

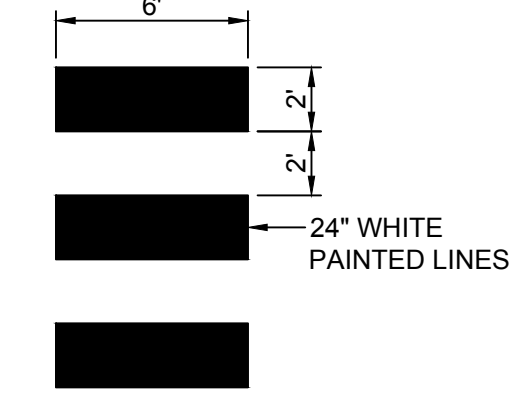


**CASE 2: HARDSCAPE AREA**



- NOTES:**
1. WORDS AND ARROWS FOR DRIVEWAYS SHALL BE APPLIED ACCORDING TO REQUIREMENTS AS OUTLINED IN SECTION 3B OF THE MANUAL ON UNIFORM TRAFFIC CONTROL DEVICES FOR STREETS AND HIGHWAYS
  2. THESE WORDS AND BAR ARE TO BE PAINTED WHITE.

**STOP BAR**  
N.T.S.



**6' WIDE CROSSWALK DETAIL**  
N.T.S.



**KimleyHorn**  
© 2021 KIMLEY-HORN AND ASSOCIATES, INC.  
1 NORTH LEXINGTON AVE. STE 505  
WHITE PLAINS, NY 10607  
PHONE: 914-368-9200  
WWW.KIMLEY-HORN.COM

Plotted By: Schluster, Noble - Sheet: Kng - Layout: 02.1 - January 05, 2022 - 07:59:35am - C:\Users\Noble.Schluster\OneDrive - KH\Documents - KH\Documents\T-2305 Torrington CT\CADD\2305 DriveUp Expansion.dwg  
This document, together with the concepts and design presented herein, is an instrument of service, to be used only for the specific purpose and client for which it was prepared. Reuse or other improper reliance on this document without written authorization and approval by Kimley-Horn and Associates, Inc. will be without liability to Kimley-Horn and Associates, Inc.

Date	No	Description



DATE: 01/05/2022

**TARGET**  
T-2305 TORRINGTON  
1922 E MAIN ST  
TORRINGTON, CT 06790

Project Number **T-2305**  
 Config:  
 Drawn By **NS**  
 Checked By **KR**

DETAILS  
C2.1

