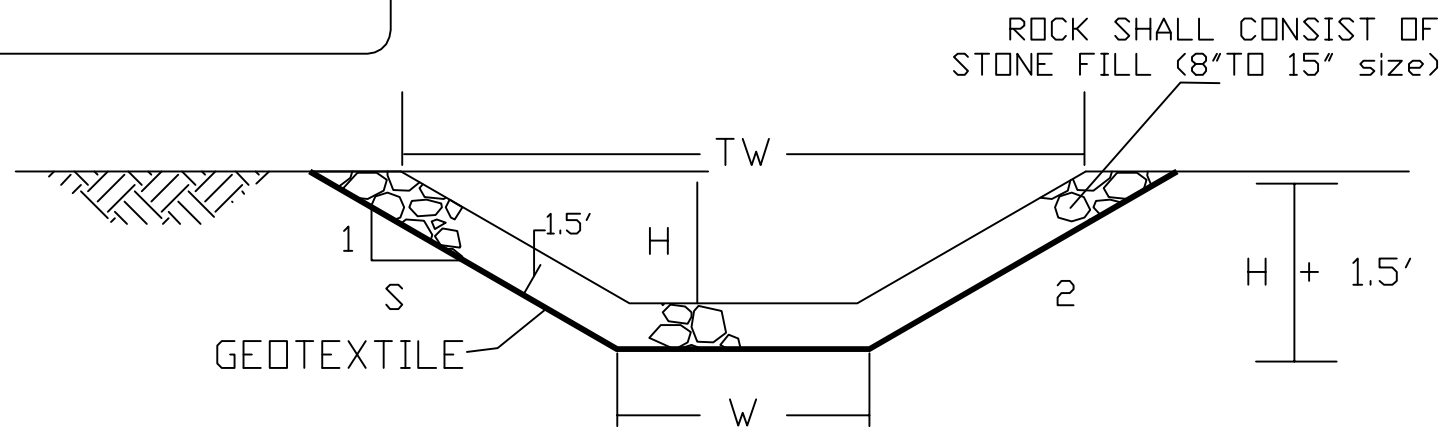


DETAILS

1

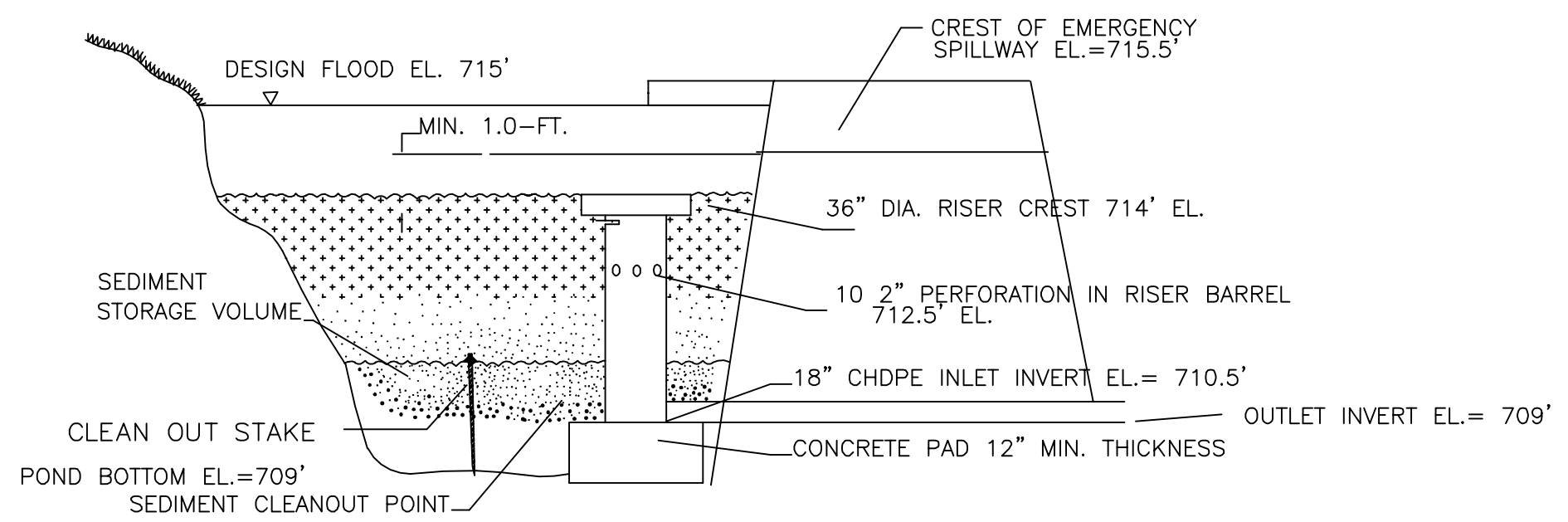
ROCK LINED DITCH & CHANNEL STRUCTURES



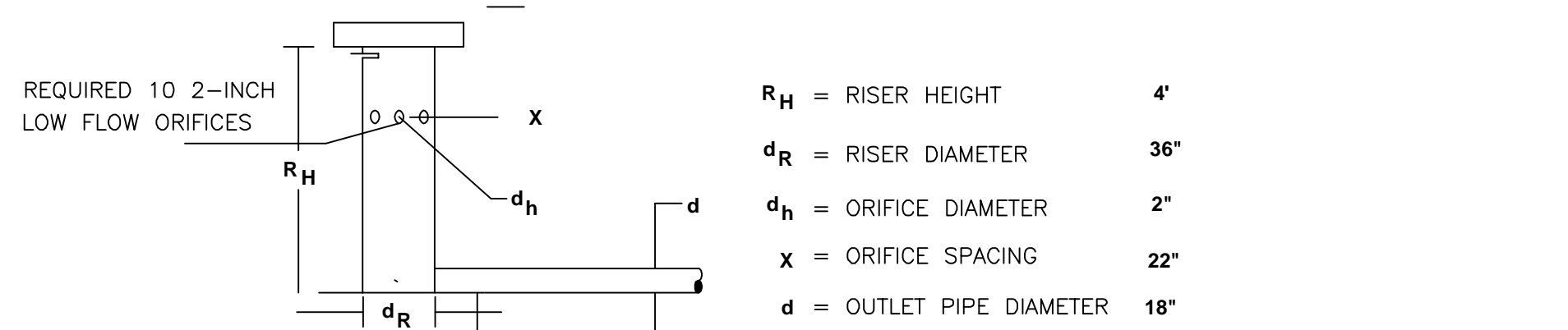
	DRAINAGE DITCH	S	W	H	TW
A	DRAINAGE DITCH1	S=1.5	W=3.0'	H=2.0'	TW=9.0'
B	DRAINAGE DITCH2	S=1.5	W=3.0'	H=2.0'	TW=9.0'
C	DRAINAGE DITCH 3	S=1.5	W=3.0'	H=2.0'	TW=9.0'
D	EMERGENCY SPILLWAY	S=1.5	W=2.0'	H=2.0'	TW=7.0'

3

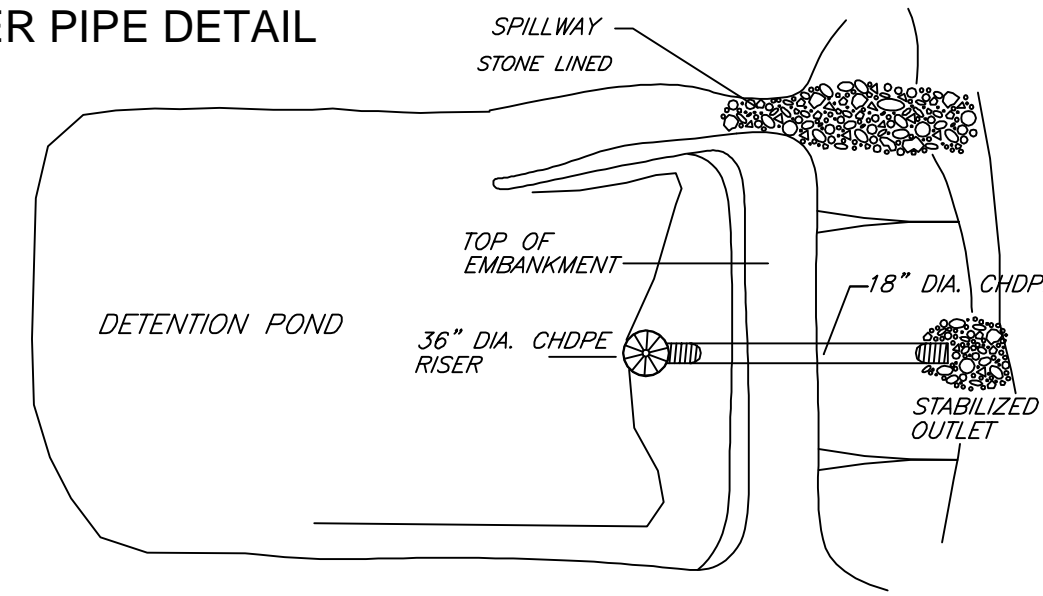
DETENTION POND WITH RISER OUTLET



DESIGN ELEVATIONS WITH REQUIRED EMERGENCY SPILLWAY



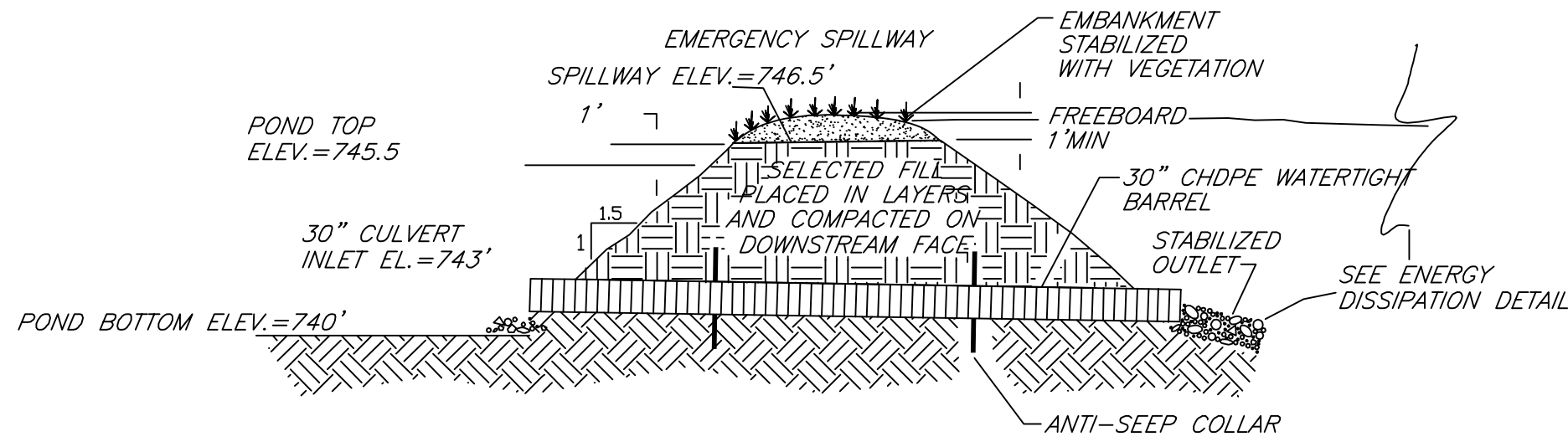
RISER PIPE DETAIL



PLAN

4

PIPE OUTLET DETENTION POND

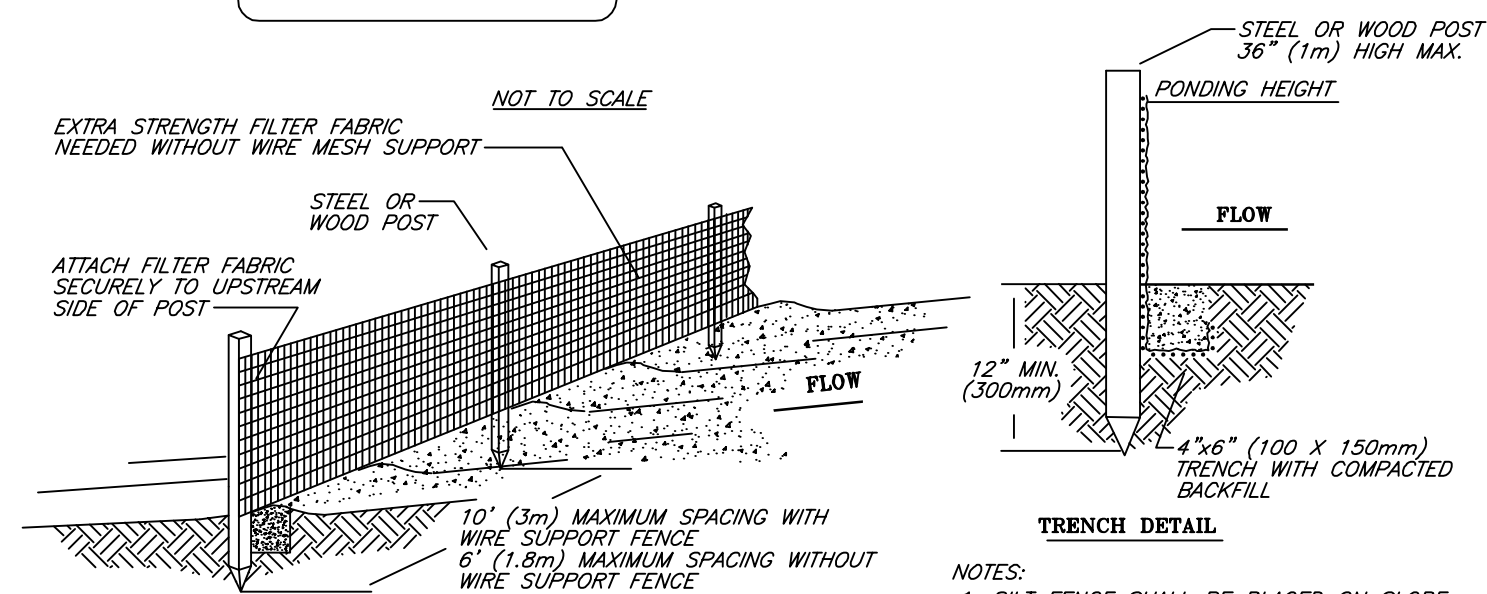


PLAN

Detention Ponds

- All pipe connections shall be watertight
- Filter fabric shall have an EOS between #4-#80 sieve
- Concrete base shall be at least 12\"/>
- Riser pipe shall be embedded into concrete base
- Sediment shall be removed when it has accumulated to 1/3 of basin depth
- Soft or unstable areas shall be over-excavated and backfilled with compacted sand/gravel before constructing berms

SILT FENCE

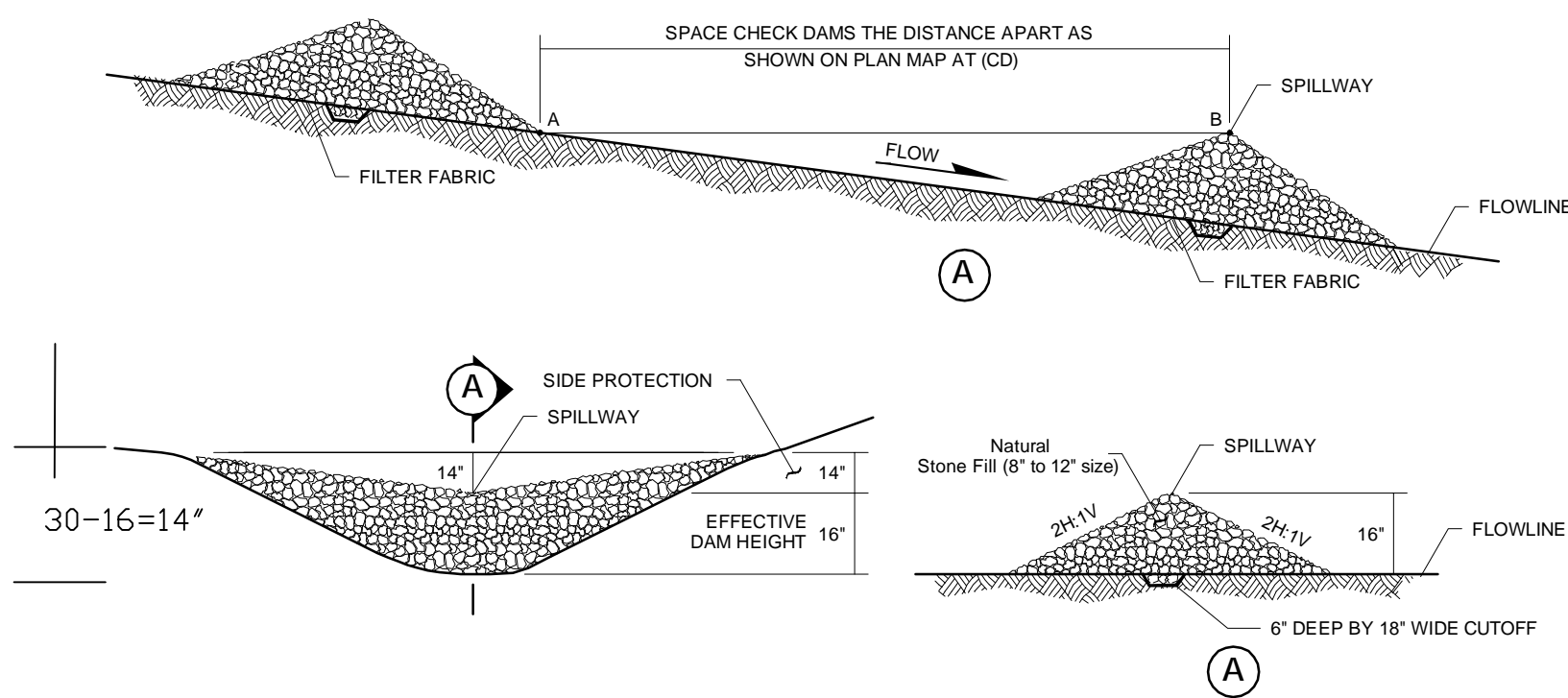


TRENCH DETAIL

- NOTES:
1. SILT FENCE SHALL BE PLACED ON SLOPE CONTOURS TO MAXIMIZE PONDING EFFICIENCY.
 2. INSPECT AND REPAIR FENCE AFTER EACH STORM EVENT AND REMOVE SEDIMENT WHEN NECESSARY. 8\"/>
 - 3. REMOVED SEDIMENT SHALL BE DEPOSITED TO AN AREA THAT WILL NOT CONTRIBUTE SEDIMENT OFF-SITE AND CAN BE PERMANENTLY STABILIZED.

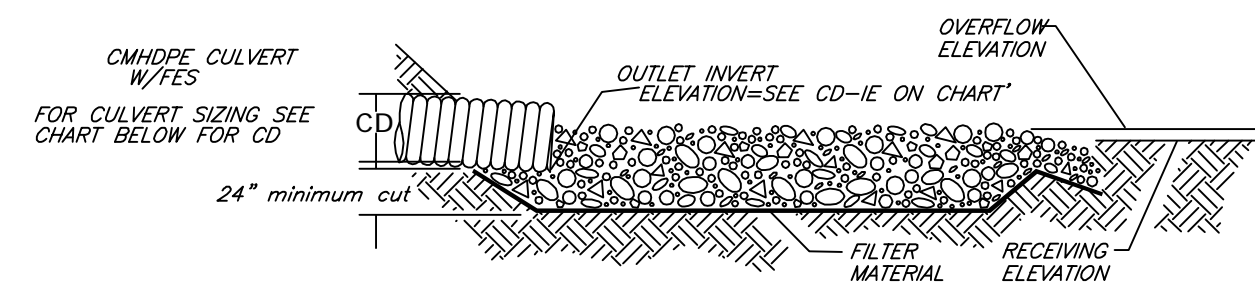
CHECK DAM DETAIL

ROCK LINED DIVERSION & DITCH CHECK DAM

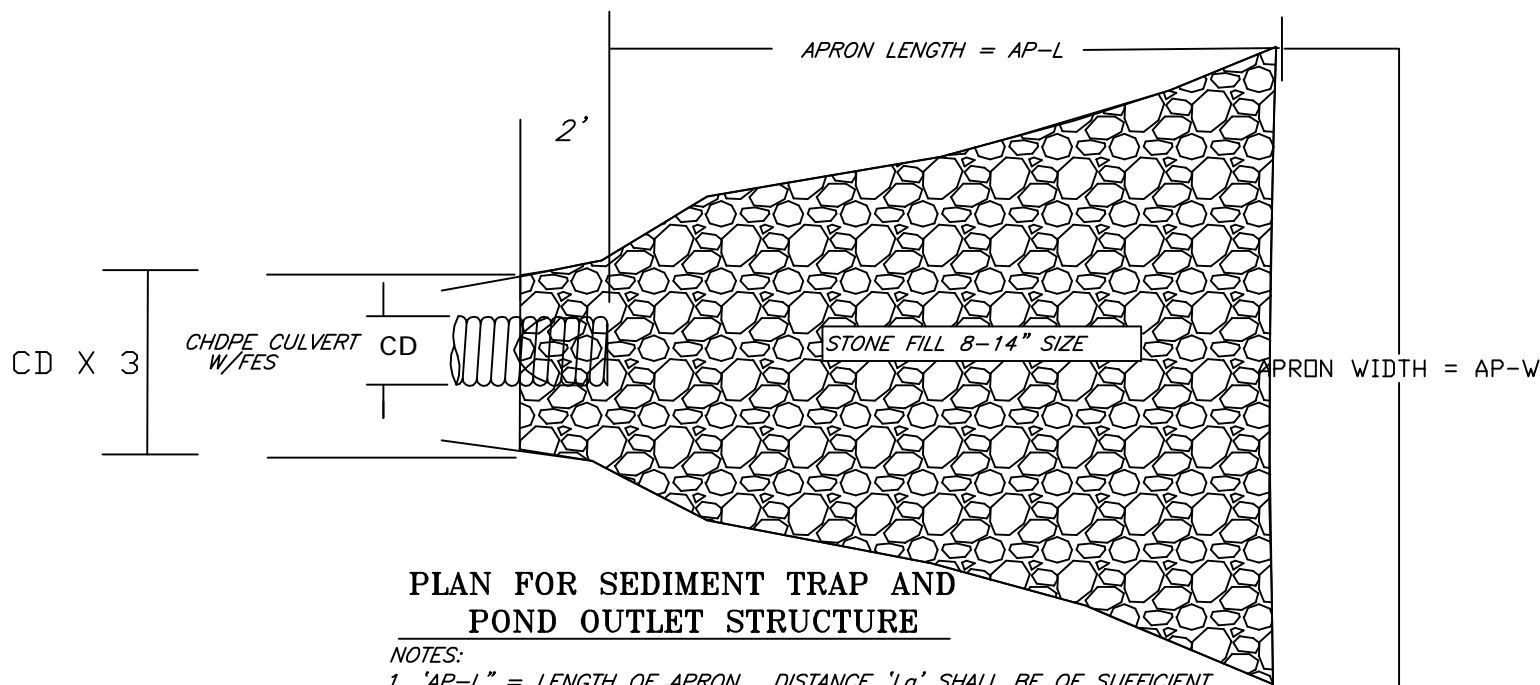


2

ROCK LINED OUTLET PROTECTION



SECTION



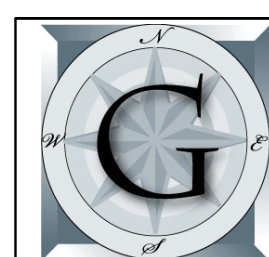
PLAN FOR SEDIMENT TRAP AND POND OUTLET STRUCTURE

- NOTES:
1. "AP-L" = LENGTH OF APRON. DISTANCE "L" SHALL BE OF SUFFICIENT LENGTH TO DISSIPATE ENERGY.
 2. APRON SHALL BE SET AT A ZERO GRADE AND ALIGNED STRAIGHT.
 3. FILTER MATERIAL SHALL BE FILTER FABRIC OR 6\"/>
 - 4. STONE FILL SHALL CONSIST OF CRUSHED BEDROCK (8\"/>

	STRUCTURE	CD dia. '	CD-IE" invert	AP-L'	AP-W'	CULVERT LENGTH
A	DETENTION POND 1	30"	743'	18'	14'	100'
B	DETENTION POND 2	18"	710.5'	15'	12'	30'

EROSION CONTROL MEASURES

1. Sediment and erosion control measures and practices to be inspected at least daily.
2. Additional erosion and sediment control measures will be installed if deemed necessary by on-site inspection.
3. The escape of sediment from the site shall be prevented by the installation of erosion control measures and practices prior to, or concurrent with, land disturbing activities.
4. Erosion control measures will be maintained at all times. If full implementation of the approved plan does not provide for effective erosion control, additional erosion and sediment control measures shall be implemented to control or treat the sediment source.
5. Maintenance of all soil erosion and sedimentation control measures and practices whether temporary or permanent, shall be at all times the responsibility of the property owner.
6. Silt fence shall be cleaned or replaced when silt reaches 1/3 height of silt fence.
7. Sediment and erosion control measures shall not be removed until all construction is complete and until a permanent ground cover has been established.
8. The installation of erosion and sediment control measures and practices shall occur prior to land-disturbing activities.
9. All disturbed areas to be grassed as soon as construction phases permit.
10. Cut slopes shall not exceed 1.5H : 1V. Fill slopes shall not exceed 2H : 1V.
11. The owner is responsible for compliance with N.P.D.E.S. general permit requirements.
12. Any disturbed area left exposed for a period greater than 30 days shall be stabilized with mulch or temporary seeding.



GREYSTONE ENGINEERING
4 Franklin Square
Saratoga Springs, NY 12866

Copyright © 2010 by Greystone Engineering. This drawing is an instrument of service and is the property of Greystone Engineering. This drawing may not be reproduced in whole or in part by any means whatsoever without the expressed written consent of Greystone Engineering.

DESIGN ENGINEER	
PROJECT ENGINEER	D. A. M.
PROJECT MANAGER	
APPROVED	
APPROVED	

Date	Revisions	By	CONTINENTAL PLACER INC.	
			11 Winners Circle Albany, New York 12205 ph: 518/458-9203 fax: 518/458-9206	
			EROSION & SEDIMENT CONTROL DETAIL SHEET O&G INDUSTRIES, INC. BURRVILLE QUARRY TORRINGTON, CT.	
			Project Manager: NM Prepared By: JAS Drafted By: JAS Reviewed By:	Date: July 31, 2012 Project No: 2-301-1-1400
				Sheet No: 2 of 2