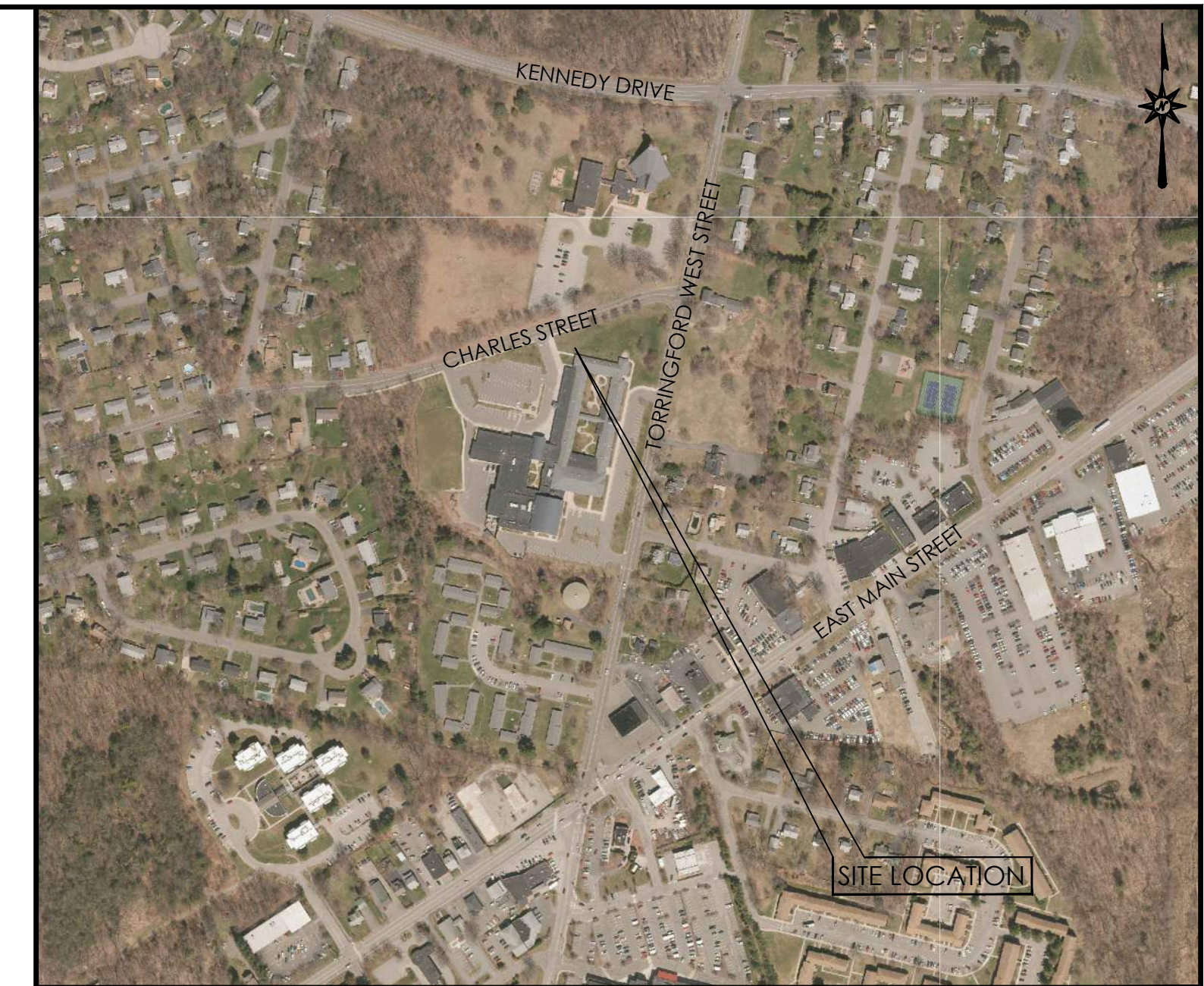


LOCATION MAP
N.T.S.

LAND DEVELOPMENT PLANS FOR PROPOSED DRIVEWAY

**800 CHARLES STREET
TORRINGTON, CONNECTICUT, 06790**



VICINITY MAP
SCALE: 1"=400'

PREPARED FOR:
TORRINGTON PUBLIC SCHOOLS
355 MIGEON AVENUE
TORRINGTON, CT 06790

PREPARED BY:

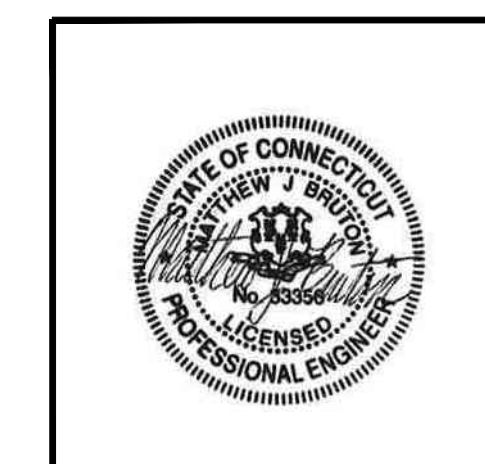


355 RESEARCH PARKWAY
MERIDEN, CONNECTICUT 06450
(203) 630-1406
(203) 630-2615 Fax

Sheet List Table		
Sheet Number	Sheet Title	Sheet Description
1	COVER SHEET	CV-1
2	GENERAL NOTES	GN-1
3	DEMOLITION PLAN	DM-1
4	SITE PLAN	SP-1
5	TRUCK TURNING PLAN	TT-1
6	GRADING AND DRAINAGE PLAN	GD-1
7	SEDIMENT AND EROSION CONTROL NOTES	EC-1
8	SEDIMENT AND EROSION CONTROL DETAILS	EC-2
9	DETAIL SHEET 1	DN-1

- APPROVED BY THE PLANNING & ZONING COMMISSION:
- FINAL APPROVAL: _____
CHAIRMAN
DATE: _____ EXPIRATION DATE: _____
- FINAL APPROVAL: _____
CHAIRMAN
DATE: _____ EXPIRATION DATE: _____

DEVELOPER: TORRINGTON PUBLIC SCHOOLS 355 MIGEON AVENUE TORRINGTON, CT 06790	OWNER: CITY OF TORRINGTON 355 MIGEON AVENUE TORRINGTON, CT 06790
--	---



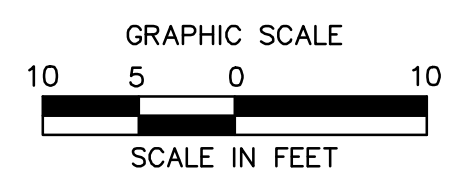
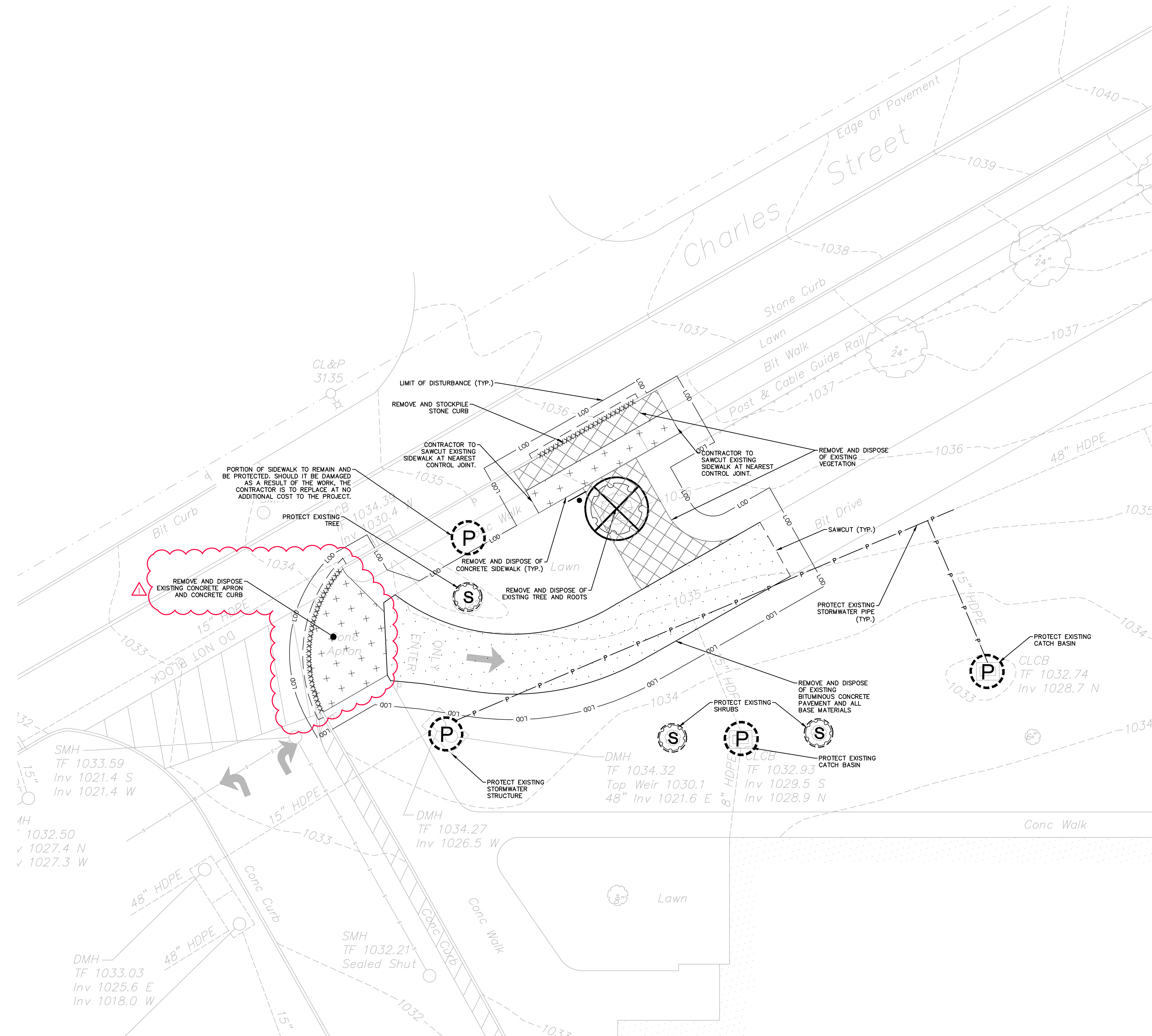
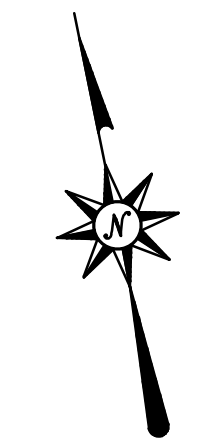
DATES	
ISSUE DATE:	AUGUST 15, 2022
REVISION:	AUGUST 23, 2022

DEMOLITION LEGEND:

- — — — — PROPERTY LINE
- — — — — LOD — — — — — LIMIT OF DISTURBANCE LINE AND CONTRACT LIMIT LINE
- — — — — SAWCUT LINE
- SF — SF — SILT FENCE
- X — CONSTRUCTION CHAIN LINK FENCE
- · · · · REMOVE AND DISPOSE OF UNDERGROUND STORMWATER OR UTILITY PIPE, CURB, FENCING, WALLS, OVERHEAD WIRES, ETC.
- P — P — PROTECT UNDERGROUND STORMWATER OR UTILITY PIPE, CURB, FENCING, WALLS, OVERHEAD WIRES, ETC.

- X REMOVE AND DISPOSE OF LIGHT POLE, SIGN, PIPING, UTILITY STRUCTURE, APPURTENANCE, FIXTURE, TREE, AND/OR TREE STUMP ETC.
- ⊗ REMOVE AND DISPOSE OF TREE, SHRUB, AND/OR STUMP (TYP.)
- S EXISTING TREE/ SHRUBS TO REMAIN AND BE PROTECTED (TYP.)
- P PROTECT STORMWATER STRUCTURES, CURB, CONCRETE SIDEWALK, ETC.

- + + + + + REMOVE AND DISPOSE OF EXISTING CONCRETE PADS AND/OR CONCRETE SIDEWALKS
- · · · · REMOVE AND DISPOSE OF EXISTING BITUMINOUS CONCRETE PAVEMENT STRUCTURE
- ▨ REMOVE AND DISPOSE OF EXISTING VEGETATION



TORRINGFORD ELEMENTARY SCHOOL - DRIVEWAY
800 CHARLES STREET
TORRINGTON, CT

REVISIONS	Desc.	RESPONSE TO COMMENTS
No. 1	Date 08/23/2022	

Designed	T.L.B.
Drawn	T.L.B.
Reviewed	S.M.K.
Scale	1"=10'
Project No.	2201283
Date	8/15/2022
CAD File:	DM220128301

DEMOLITION PLAN

Sheet No.

DM-1

8/23/2022, 10:48:02 AM, C:\DWGFILES\22\2201283\DM220128301.DWG, DM-1, 24x36, 2002

ZONING INFORMATION

LOCATION: TORRINGTON, LITCHFIELD COUNTY, CONNECTICUT
ZONE: R10S (RESIDENTIAL 10,000 SF LOT SIZE, SINGLE FAMILY)
USE: SCHOOL (PERMITTED USE)

SITE PLAN LEGEND

- LOD LIMIT OF DISTURBANCE
- CONCRETE SIDEWALK
- STANDARD DUTY BITUMINOUS CONCRETE PAVEMENT STRUCTURE
- LOAM AND SEED

EROSION CONTROL LEGEND:

- SILT FENCE
- INLET PROTECTION
- STOCKPILE AREA WITH DOUBLE ROW OF SILT FENCE

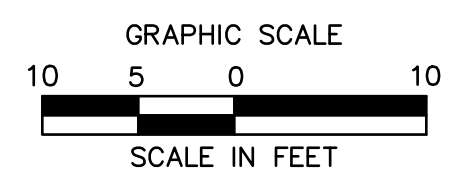
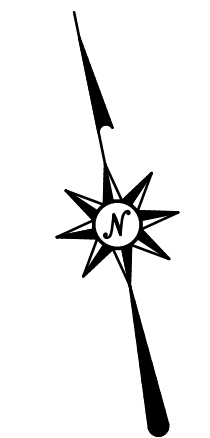
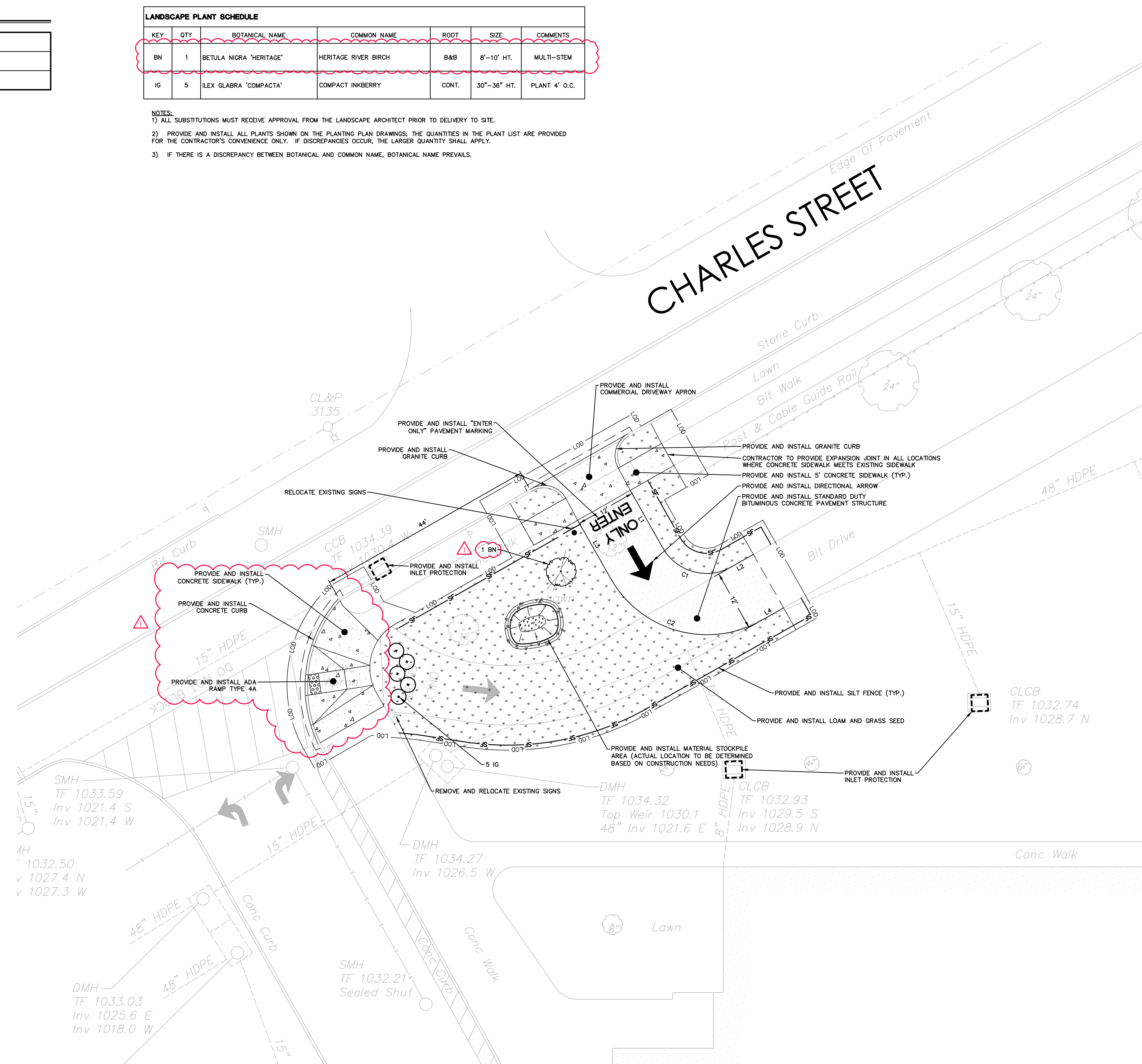
SEED MIX NOTES

- A. LAWN SEEDING MIX:
- 15 % PERENNIAL RYEGRASS (BLEND OF 3 IMPROVED HYBRIDS)
 - 25 % FINE LEAF OR CREEPING FESCUE (BLEND OF 3 IMPROVED HYBRIDS)
 - 60 % KENTUCKY BLUEGRASS (BLEND OF 3 IMPROVED HYBRIDS)
 - SEEDING RATE: 5 LBS/1,000 S.F.
 - SEEDING DATES: AUGUST 15 - OCTOBER 1 AND APRIL 15 - JUNE 30 UNLESS OTHERWISE APPROVED BY THE OWNER OR LANDSCAPE ARCHITECT.

Line #/Curve #	Length	Direction/Delta	Radius
C1	15.733	090.1444	10.000
C2	34.520	089.9024	22.000
L1	13.128	S17° 58' 14.94"E	
L2	5.000	N71° 53' 05.09"E	
L3	13.324	S18° 04' 06.38"E	
L4	5.025	N72° 01' 45.06"E	

KEY	QTY	BOTANICAL NAME	COMMON NAME	ROOT	SIZE	COMMENTS
BN	1	BETULA NIGRA 'HERITAGE'	HERITAGE RIVER BIRCH	B&B	8'-10' HT.	MULTI-STEM
IG	5	ILEX GLABRA 'COMPACTA'	COMPACT INKBERRY	CONT.	30"-36" HT.	PLANT 4' O.C.

- NOTES:
- 1) ALL SUBSTITUTIONS MUST RECEIVE APPROVAL FROM THE LANDSCAPE ARCHITECT PRIOR TO DELIVERY TO SITE.
 - 2) PROVIDE AND INSTALL ALL PLANTS SHOWN ON THE PLANTING PLAN DRAWINGS; THE QUANTITIES IN THE PLANT LIST ARE PROVIDED FOR THE CONTRACTOR'S CONVENIENCE ONLY. IF DISCREPANCIES OCCUR, THE LARGER QUANTITY SHALL APPLY.
 - 3) IF THERE IS A DISCREPANCY BETWEEN BOTANICAL AND COMMON NAME, BOTANICAL NAME PREVAILS.



No.	Date	Desc.	RESPONSE TO COMMENTS
1	08/23/2022		

Designed	T.R.J.
Drawn	T.R.J.
Reviewed	S.M.K.
Scale	1"=10'
Project No.	2201283
Date	8/15/2022
CAD File:	SP220128301

SITE PLAN

Sheet No.

8/23/2022 10:48:02 AM C:\WORK\2201283\2201283.DWG (S:\2201283\2201283.DWG) 148X 283C

© 2022 BL COMPANIES, INC. THESE DRAWINGS SHALL NOT BE UTILIZED BY ANY PERSON, FIRM OR CORPORATION WITHOUT THE SPECIFIC WRITTEN PERMISSION OF BL COMPANIES.

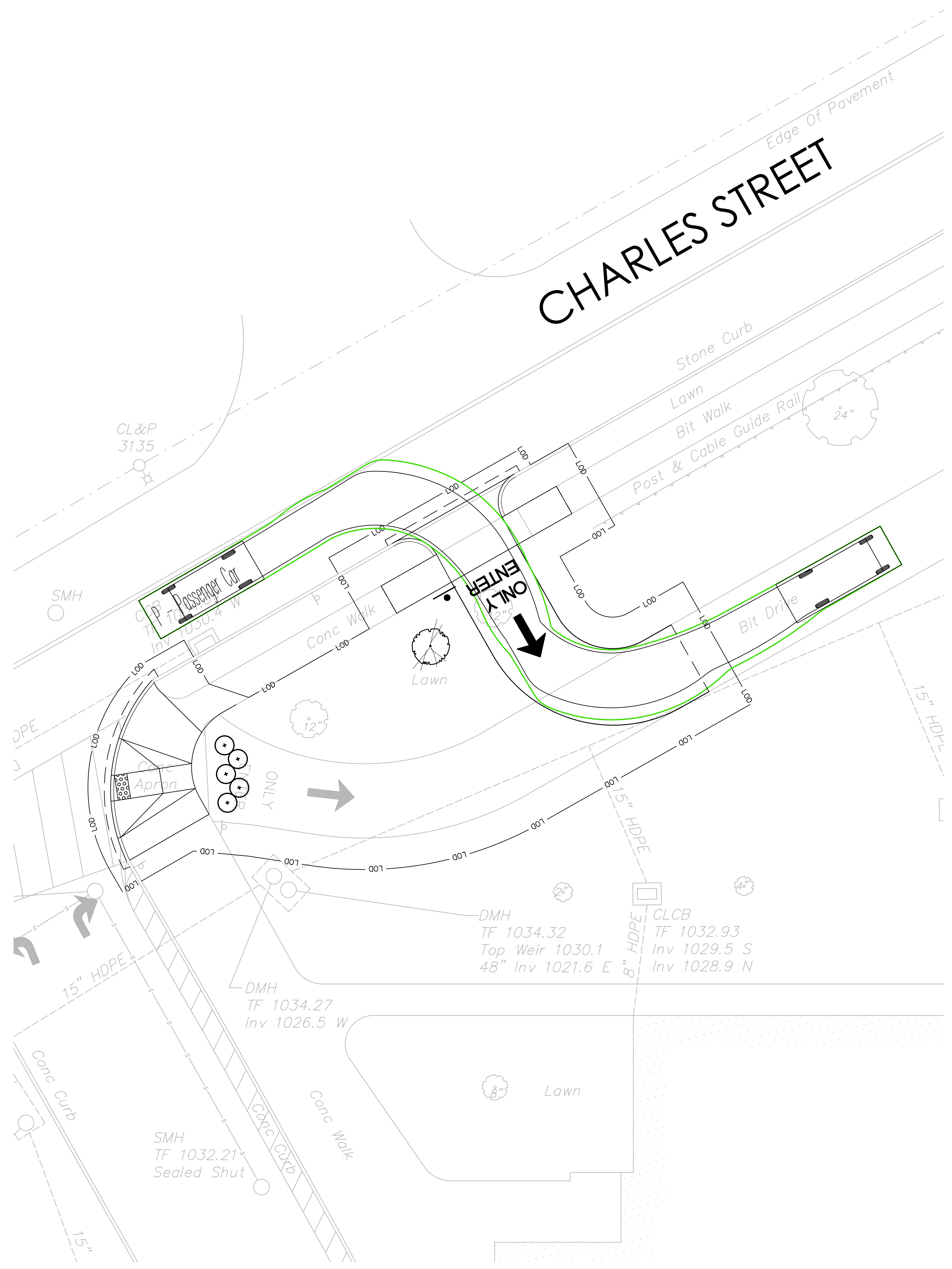


TORRINGFORD ELEMENTARY SCHOOL - DRIVEWAY
800 CHARLES STREET
TORRINGFORD, CT

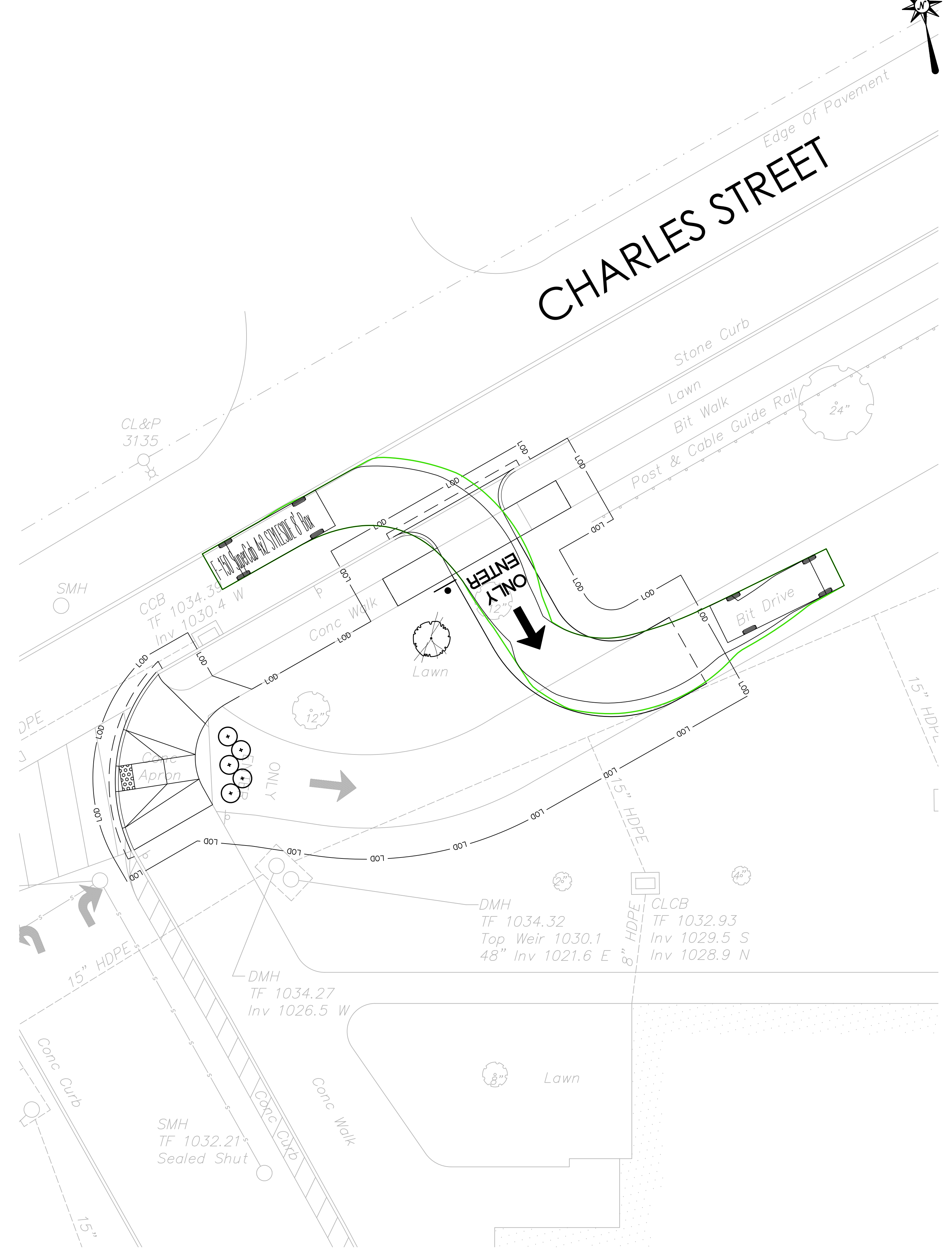
REVISIONS	Desc.	RESPONSE TO COMMENTS
No. 1	Date 08/23/2022	

Designed	T.R.J.
Drawn	T.R.J.
Reviewed	S.M.K.
Scale	1"=10'
Project No.	2201283
Date	8/15/2022
CAD File:	SP220128301

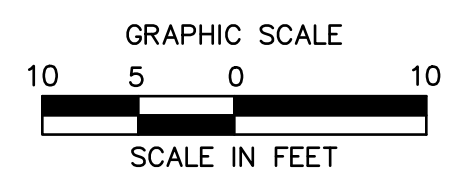
Title
TRUCK TURNING PLAN
Sheet No.



PASSENGER CAR TURNING MOVEMENT



F-150 PICKUP TRUCK TURNING MOVEMENT

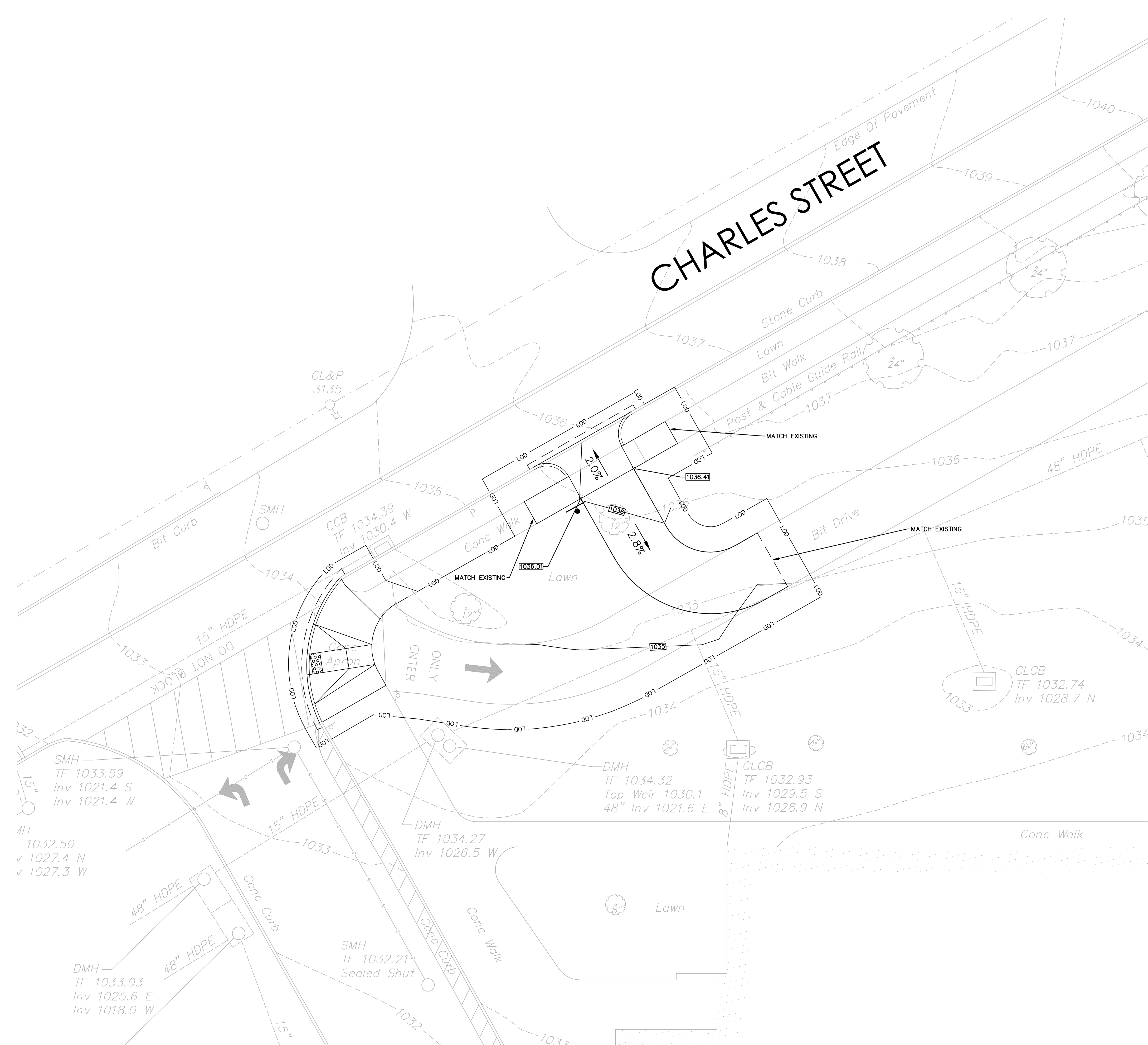


8/23/2022 TORRINFORD ELEMENTARY SCHOOL DRIVEWAY (2022) DWG SET: 2201283

© 2022 BL COMPANIES, INC. THESE DRAWINGS SHALL NOT BE UTILIZED BY ANY PERSON, FIRM OR CORPORATION WITHOUT THE SPECIFIC WRITTEN PERMISSION OF BL COMPANIES.

GRADING AND DRAINAGE LEGEND

PROPERTY LINE	---
LIMIT OF DISTURBANCE LINE AND CONTRACT LIMIT LINE	---
PROPOSED CONTOUR LINE	100
PROPOSED SPOT GRADE	x 100.00
ABBREVIATIONS	
- TC=TOP OF CURB	TC=100.00
- BC=BOTTOM OF CURB	x BC=99.50
PROPOSED SURFACE SLOPE	<u>2%</u>



355 Research Parkway
Meriden, CT 06450
(203) 630-1406
(203) 630-2615 Fax



TORRINGFORD ELEMENTARY SCHOOL - DRIVEWAY

800 CHARLES STREET
TORRINGFORD, CT

REVISIONS	Desc.	RESPONSE TO COMMENTS
No.	Date	
1	08/23/2022	

Designed T.R.J.
Drawn T.R.J.
Reviewed S.M.K.
Scale 1"=10'
Project No. 2201283
Date 8/15/2022
CAD File: GD220128301

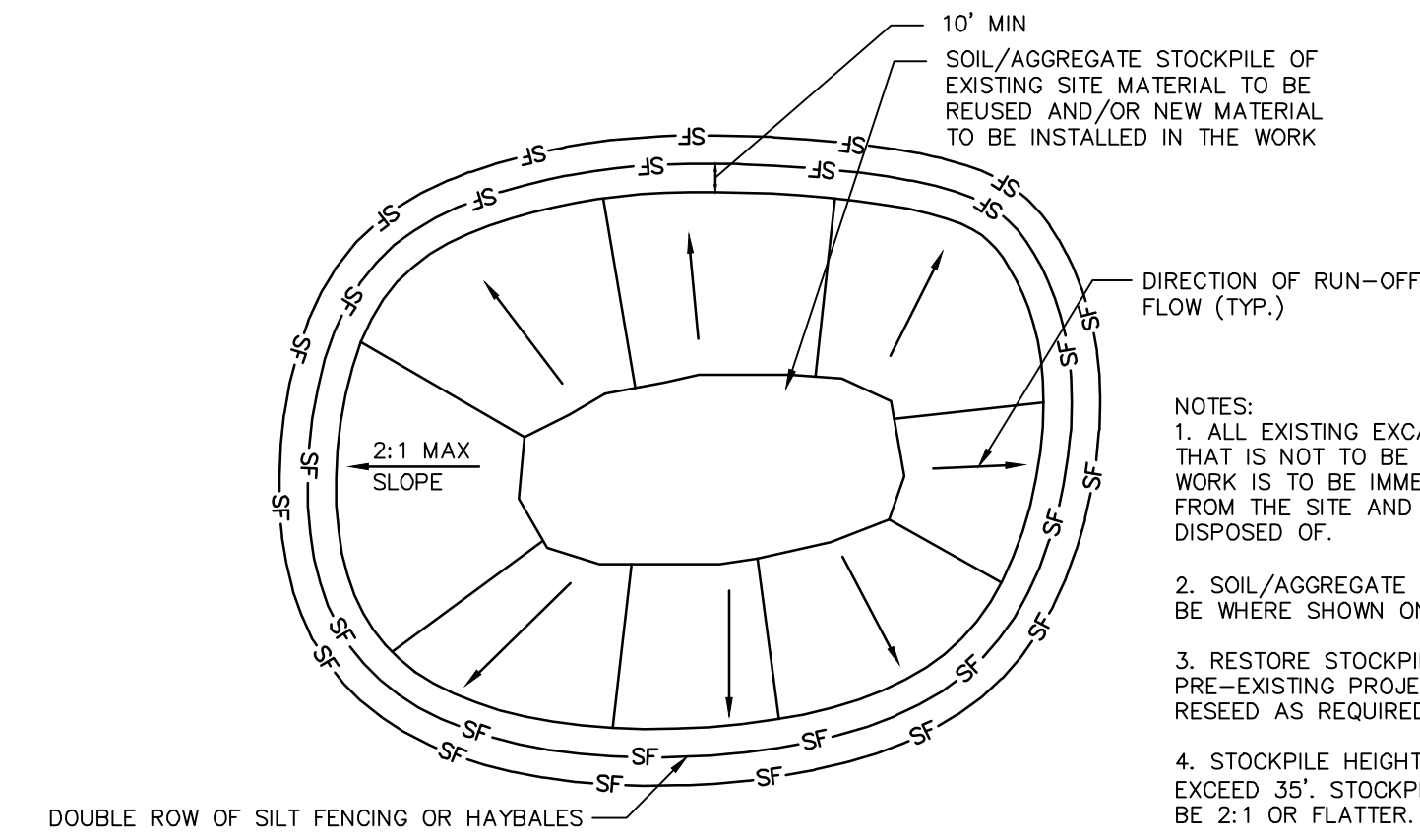
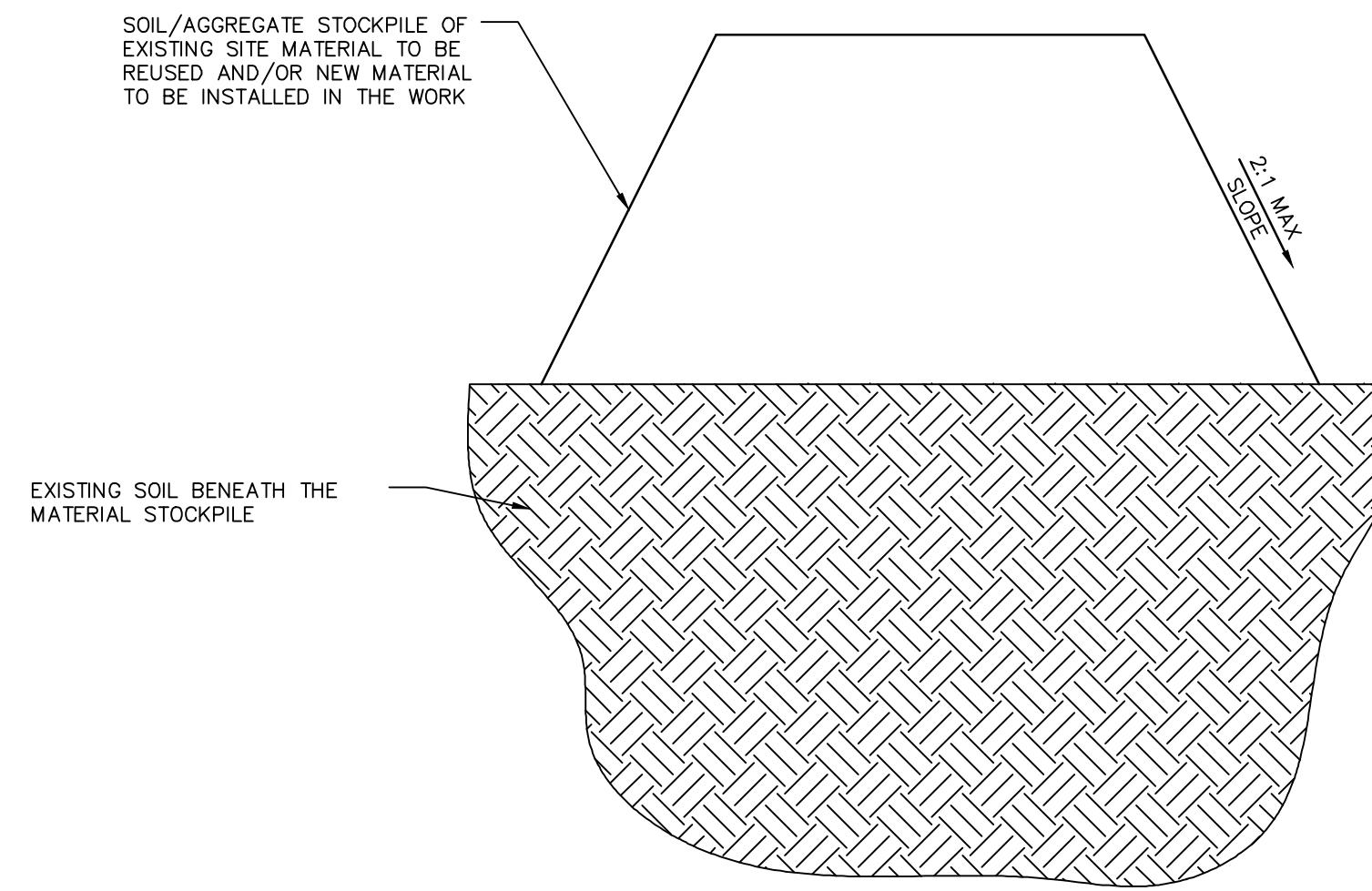
GRADING AND DRAINAGE PLAN

Sheet No.

GD-1

8/23/2022, 10:08:00 AM, C:\Users\blc\OneDrive\Documents\220128301\GD220128301.dwg, 1:24634, 186C.

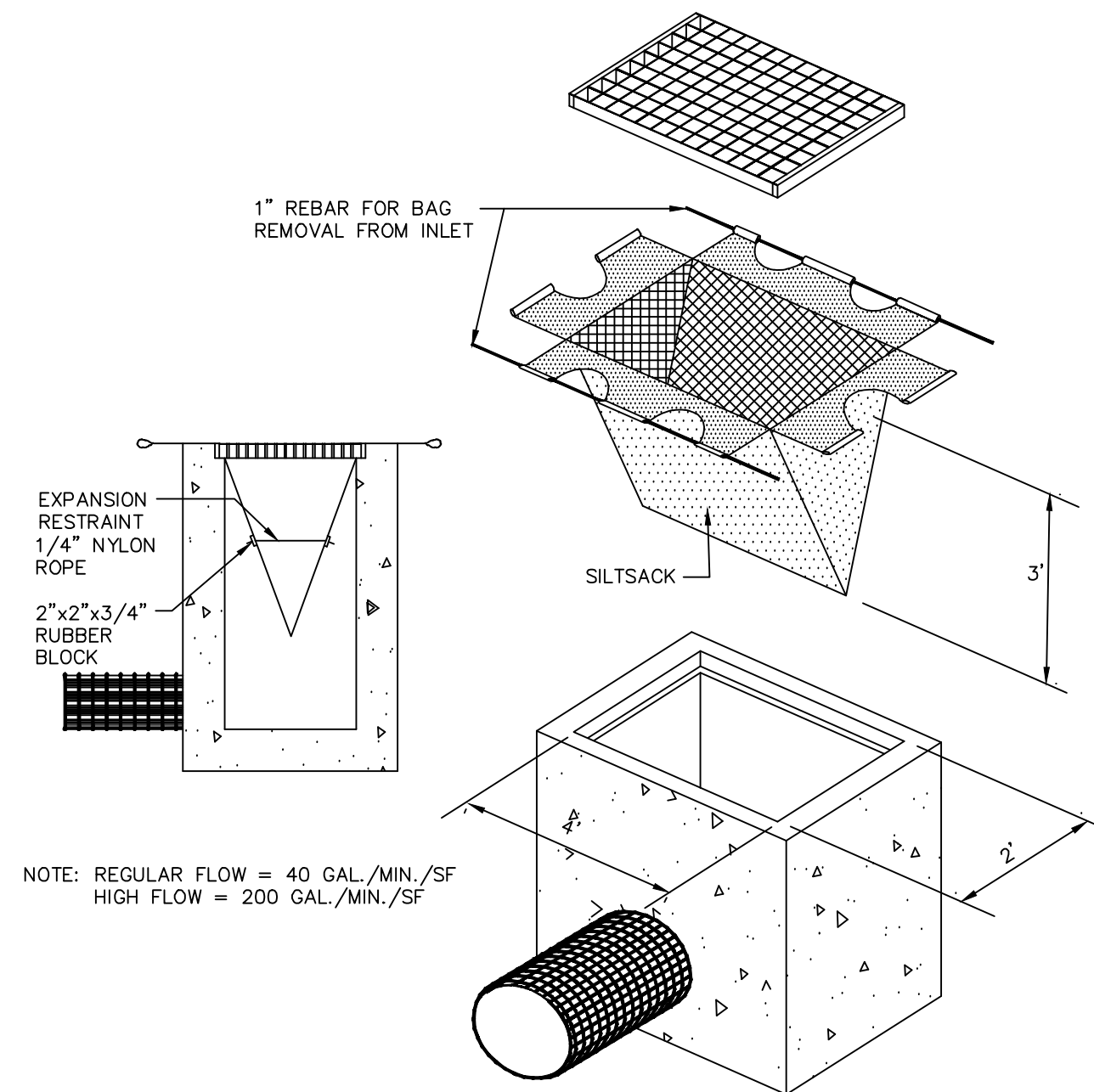
© 2022 BL COMPANIES, INC. THESE DRAWINGS SHALL NOT BE UTILIZED BY ANY PERSON, FIRM OR CORPORATION WITHOUT THE SPECIFIC WRITTEN PERMISSION OF BL COMPANIES.



- NOTES:
1. ALL EXISTING EXCAVATED MATERIAL THAT IS NOT TO BE REUSED IN THE WORK IS TO BE IMMEDIATELY REMOVED FROM THE SITE AND PROPERLY DISPOSED OF.
 2. SOIL/AGGREGATE STOCKPILE SITES TO BE WHERE SHOWN ON THE DRAWINGS.
 3. RESTORE STOCKPILE SITES TO PRE-EXISTING PROJECT CONDITION AND RESEED AS REQUIRED.
 4. STOCKPILE HEIGHTS MUST NOT EXCEED 35'. STOCKPILE SLOPES MUST BE 2:1 OR FLATTER.

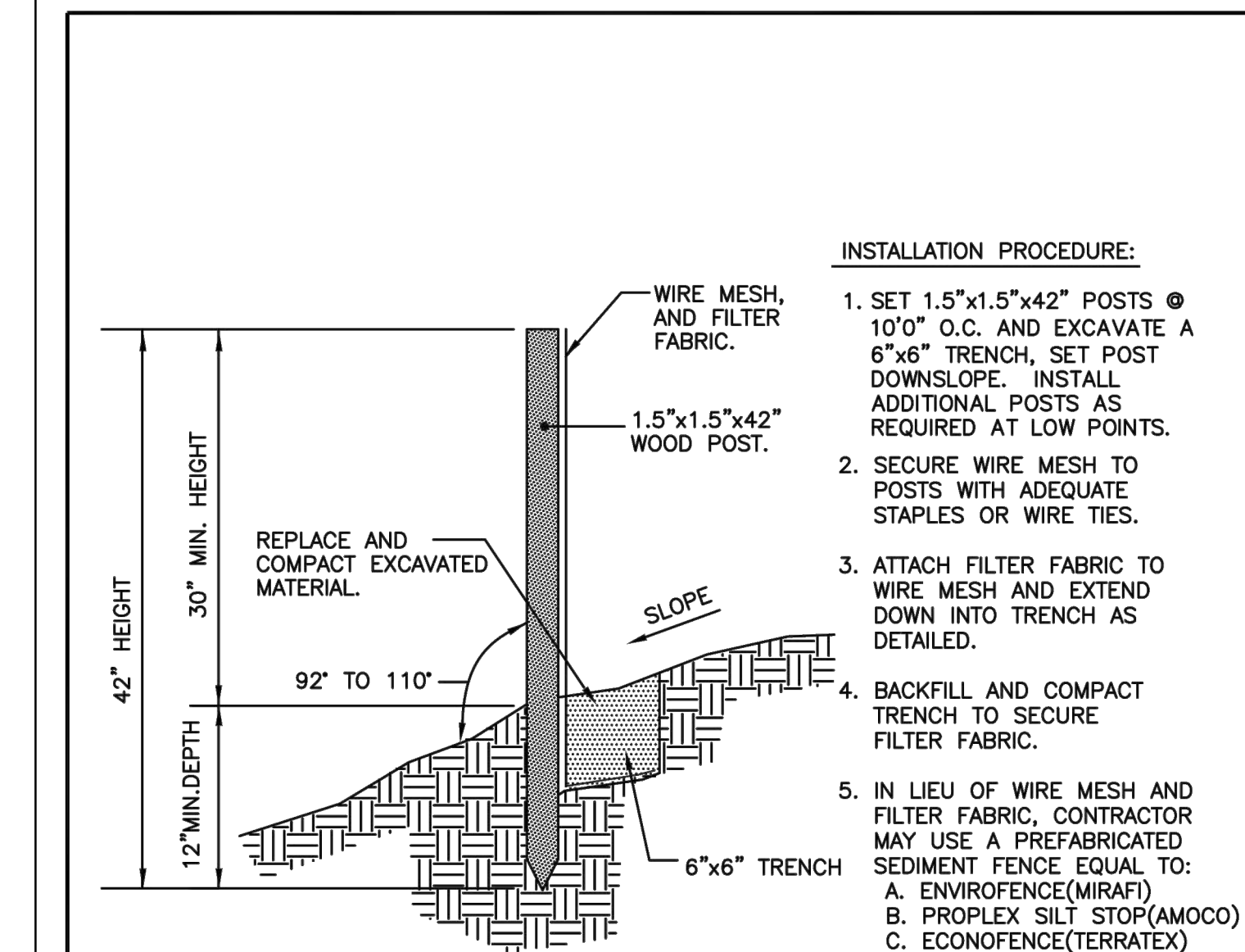
MATERIALS STOCKPILE DETAIL

N.T.S. BLEC-006



SILTSACK DETAIL

N.T.S. BLEC-005



INSTALLATION PROCEDURE:

1. SET 1.5"x1.5"x42" POSTS @ 10'0" O.C. AND EXCAVATE A 6"x6" TRENCH, SET POST DOWNSLOPE. INSTALL ADDITIONAL POSTS AS REQUIRED AT LOW POINTS.
2. SECURE WIRE MESH TO POSTS WITH ADEQUATE STAPLES OR WIRE TIES.
3. ATTACH FILTER FABRIC TO WIRE MESH AND EXTEND DOWN INTO TRENCH AS DETAILED.
4. BACKFILL AND COMPACT TRENCH TO SECURE FILTER FABRIC.
5. IN LIEU OF WIRE MESH AND FILTER FABRIC, CONTRACTOR MAY USE A PREFABRICATED SEDIMENT FENCE EQUAL TO:
A. ENVIROFENCE(MIRAFI)
B. PROPLEX SILT STOP(AMOCO)
C. ECONOFENCE(TERRATEX) OR APPROVED EQUALS.

NOTE:
SEDIMENT FENCE IS TO BE CHECKED AFTER EVERY STORM EVENT AND/OR ONCE EVERY TWO WEEKS (MIN.)

SCALE N.T.S.	CITY OF TORRINGTON Engineering Department
APPROVED	
RV. DATE JAN. 2002 MAY 2004 AUG. 2011	CONSTRUCTION SILT FENCE

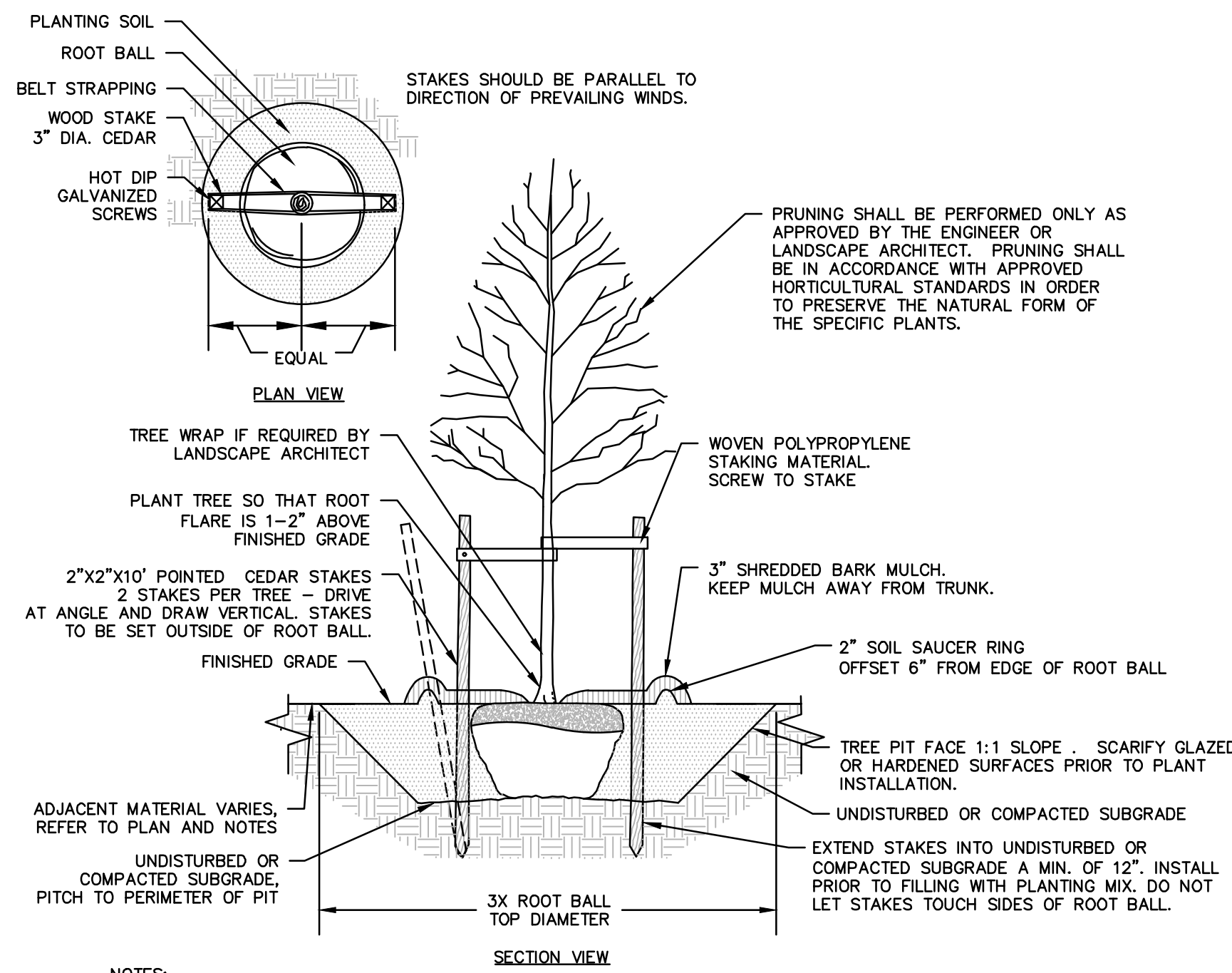
SECTION 7.2

REVISIONS

No.	Date	Desc.
1	08/23/2022	RESPONSE TO COMMENTS

Designed	T.L.B.
Drawn	T.L.B.
Reviewed	S.M.K.
Scale	NONE
Project No.	2201283
Date	8/15/2022
CAD File:	EC220128301

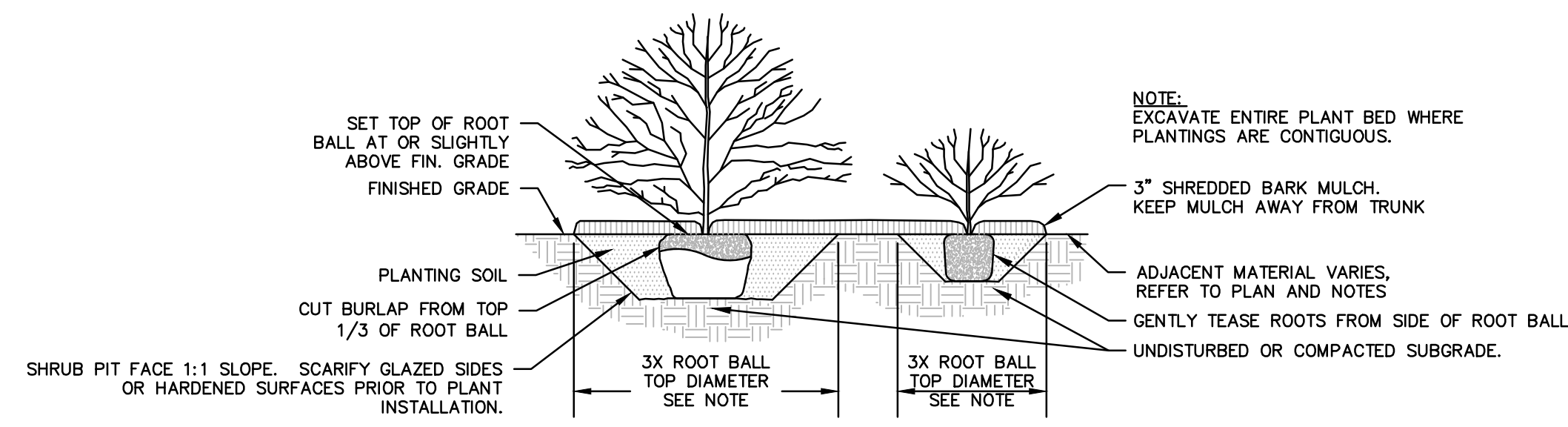
SEDIMENT AND EROSION CONTROL DETAILS



- NOTES:**
- STAKING FOR TREES ON 4:1 SLOPES OR LESS THAN 3" CALIPER TO BE PERFORMED AT CONTRACTORS DISCRETION.
 - WOVEN POLYPROPYLENE STAKING MATERIAL SHALL BE DEEPROOT ARBORTIE (GREEN) OR APPROVED EQUIVALENT. MATERIAL SHALL BE LOOPED AROUND TREE THROUGH EACH OTHER, TWISTED, AND SECURED TO THE STAKE. INSTALL SPECIFIED MATERIAL IN ACCORDANCE WITH MANUFACTURER'S DIRECTIONS.
 - BEFORE IN HOLE, REMOVE BOTTOM OF CAGE, ONCE IN HOLE, REMOVE REST OF CAGE FROM ROOT BALL. REMOVE TWINE AND BURLAP FROM TOP 1/3 OF ROOT BALL - SCORE REMAINING 2/3 OF BURLAP. IF BURLAP IS SYNTHETIC OR HAS BEEN TREATED WITH ANTI-DESSICANT, COMPLETELY REMOVE IT FROM ROOT BALL.

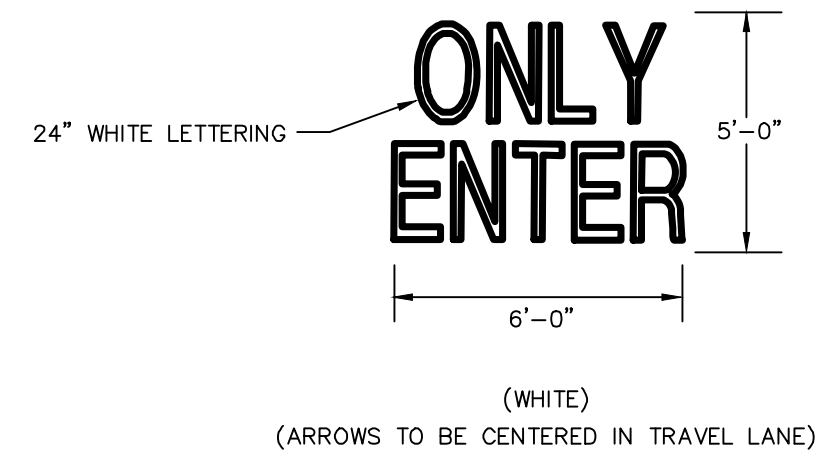
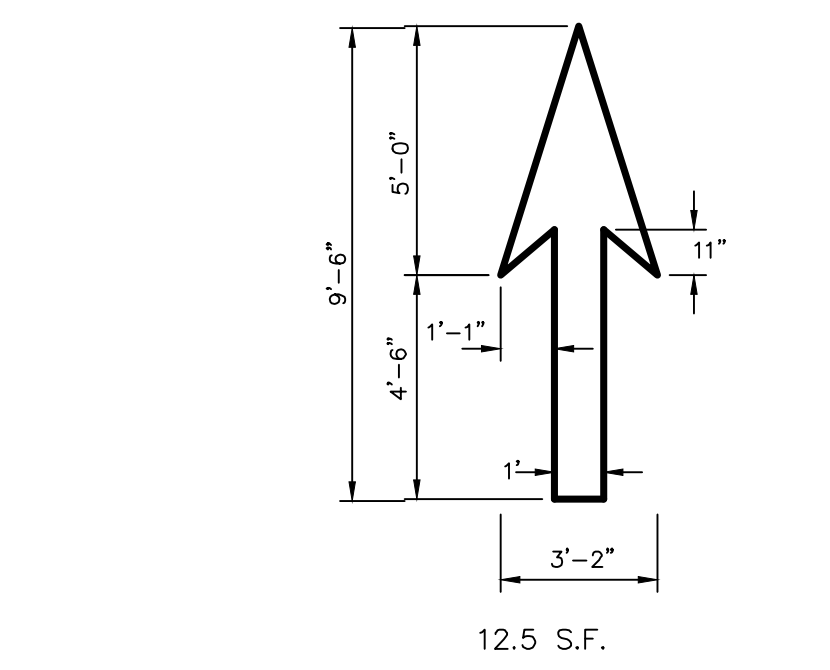
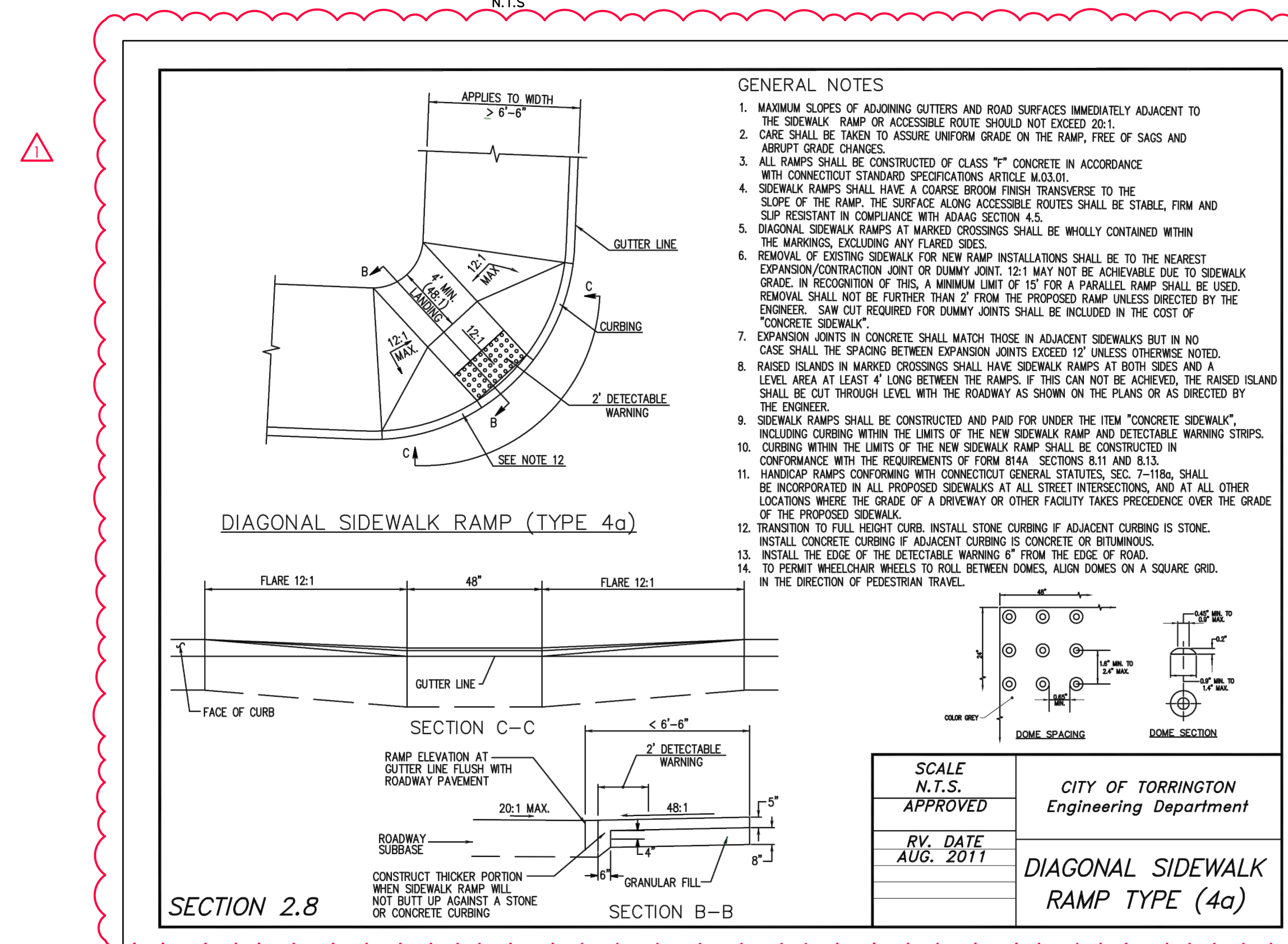
DECIDUOUS TREE PLANTING

N.T.S.



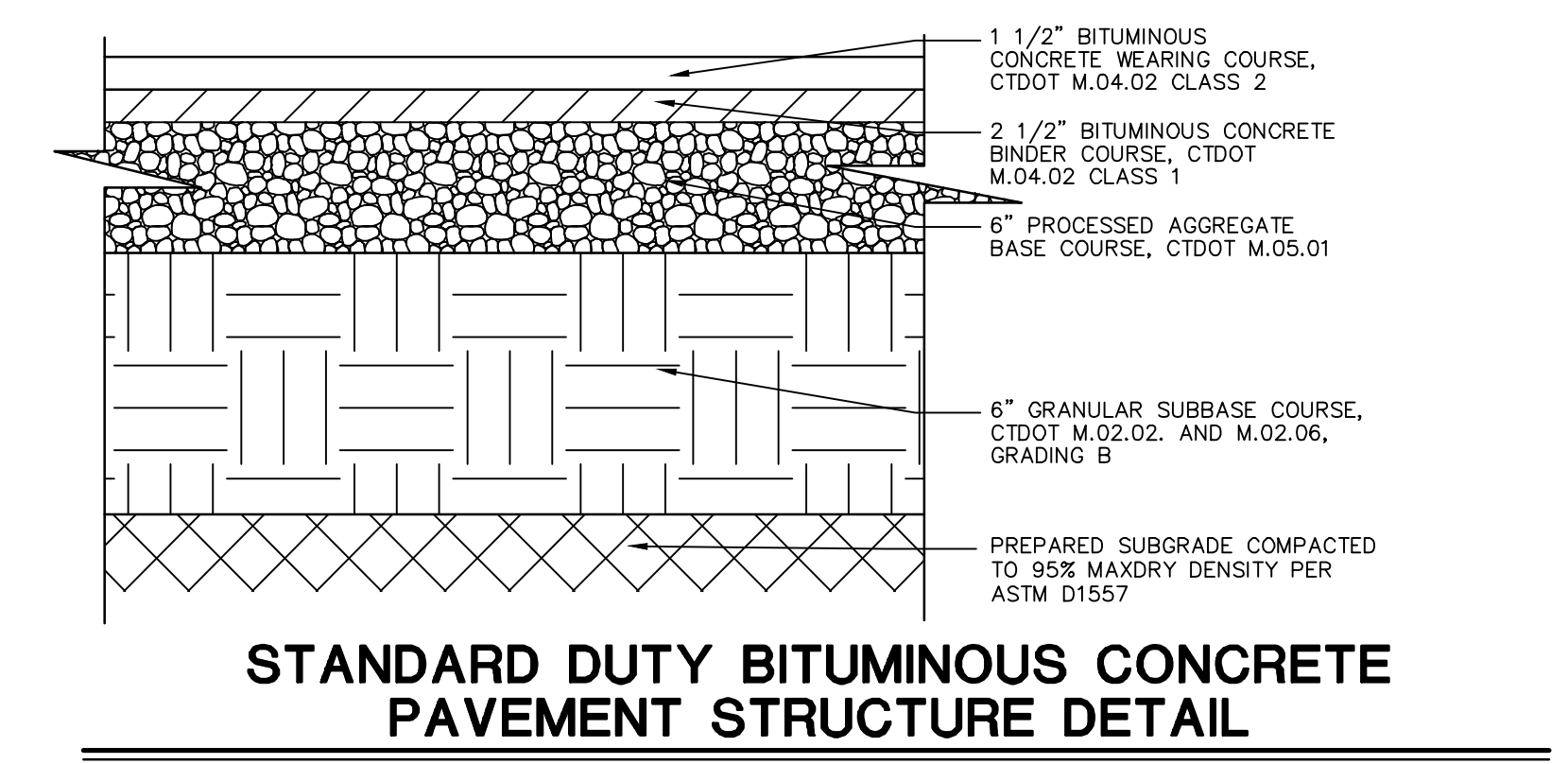
SHRUB PLANTING

N.T.S.



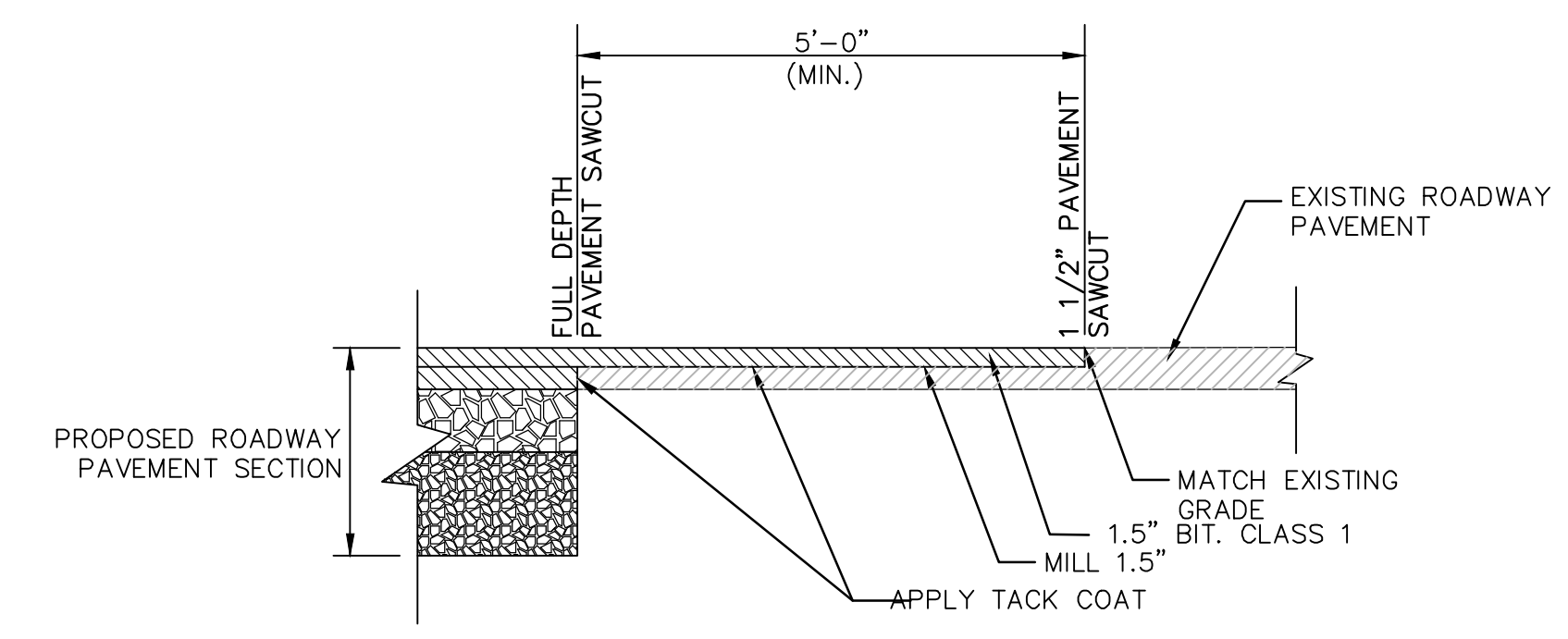
PAVEMENT MARKING DETAILS

N.T.S.



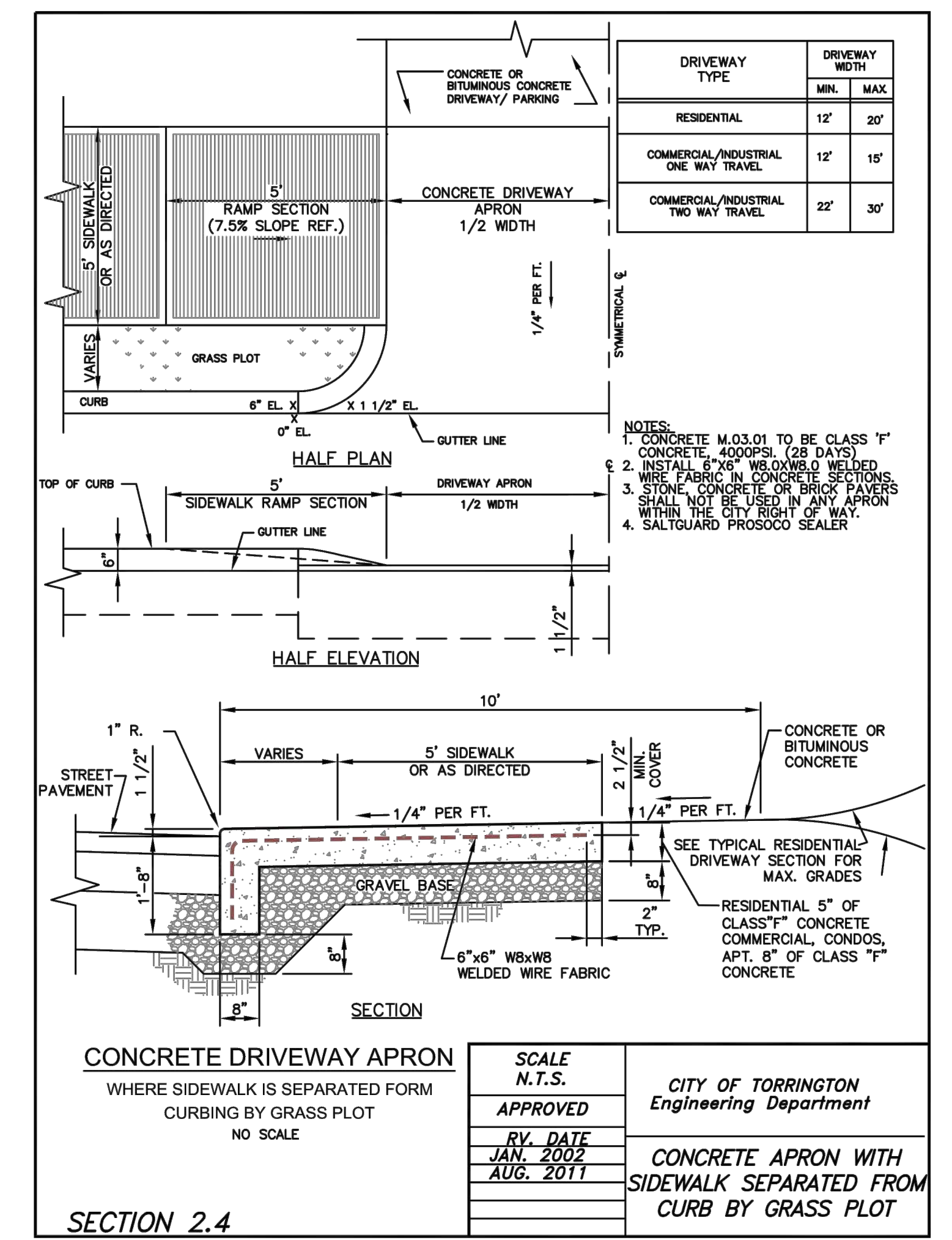
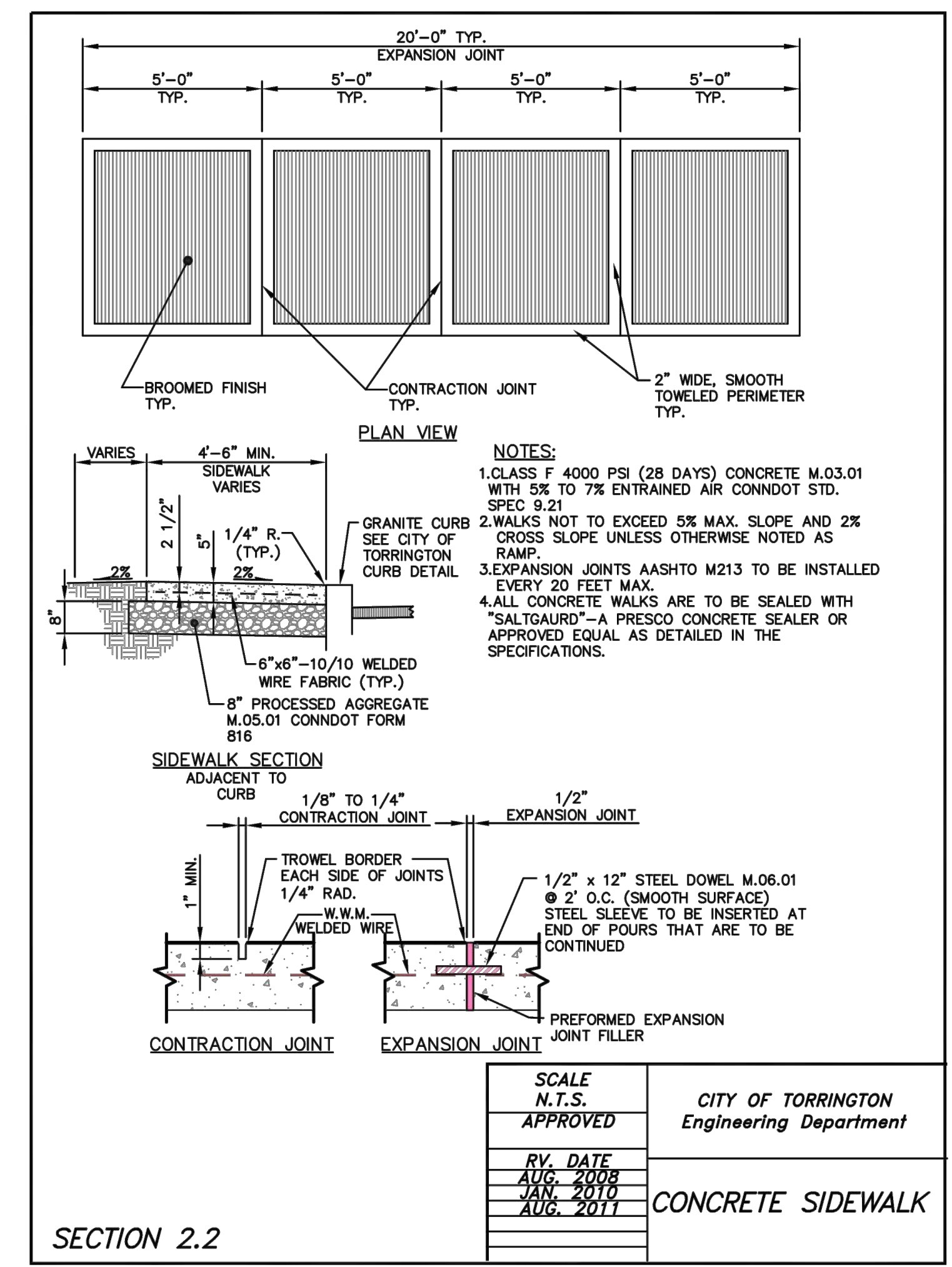
STANDARD DUTY BITUMINOUS CONCRETE PAVEMENT STRUCTURE DETAIL

N.T.S.



PAVEMENT MATCHING DETAIL

N.T.S.



355 Research Parkway
Meriden, CT 06450
(203) 630-1406
(203) 630-2615 Fax



TORRINGTON ELEMENTARY SCHOOL - DRIVEWAY
800 CHARLES STREET
TORRINGTON, CT

REVISIONS

No.	Date	Desc.	RESPONSE TO COMMENTS
1	08/23/2022		

Designed T.L.B.
Drawn T.L.B.
Reviewed S.M.K.
Scale NONE
Project No. 2201283
Date 8/15/2022
CAD File: DN220128301

DETAILS SHEET

Sheet No.

DN-1