



Torrington Water Company

P.O. BOX 867 - TORRINGTON, CONNECTICUT 06790 - PH: (860) 489-4149 - FX: (860) 496-7889

To: Susan M. Suhanovsky, President,
The Torrington Water Company

From: Jonathan G. Zeiner, Watershed Supervisor,
The Torrington Water Company

Subject: Crystal Lake Watershed Area

Date: December 20, 2021

Memorandum

This memo is to notify all interested parties that the area within the Crystal Lake watershed has been discontinued as a surface water reservoir. Potable water has not been drawn from Crystal Lake since the 1910's. The area within the watershed designation (see map) for Crystal Lake is no longer under certain State Health Dept. inspection requirements.

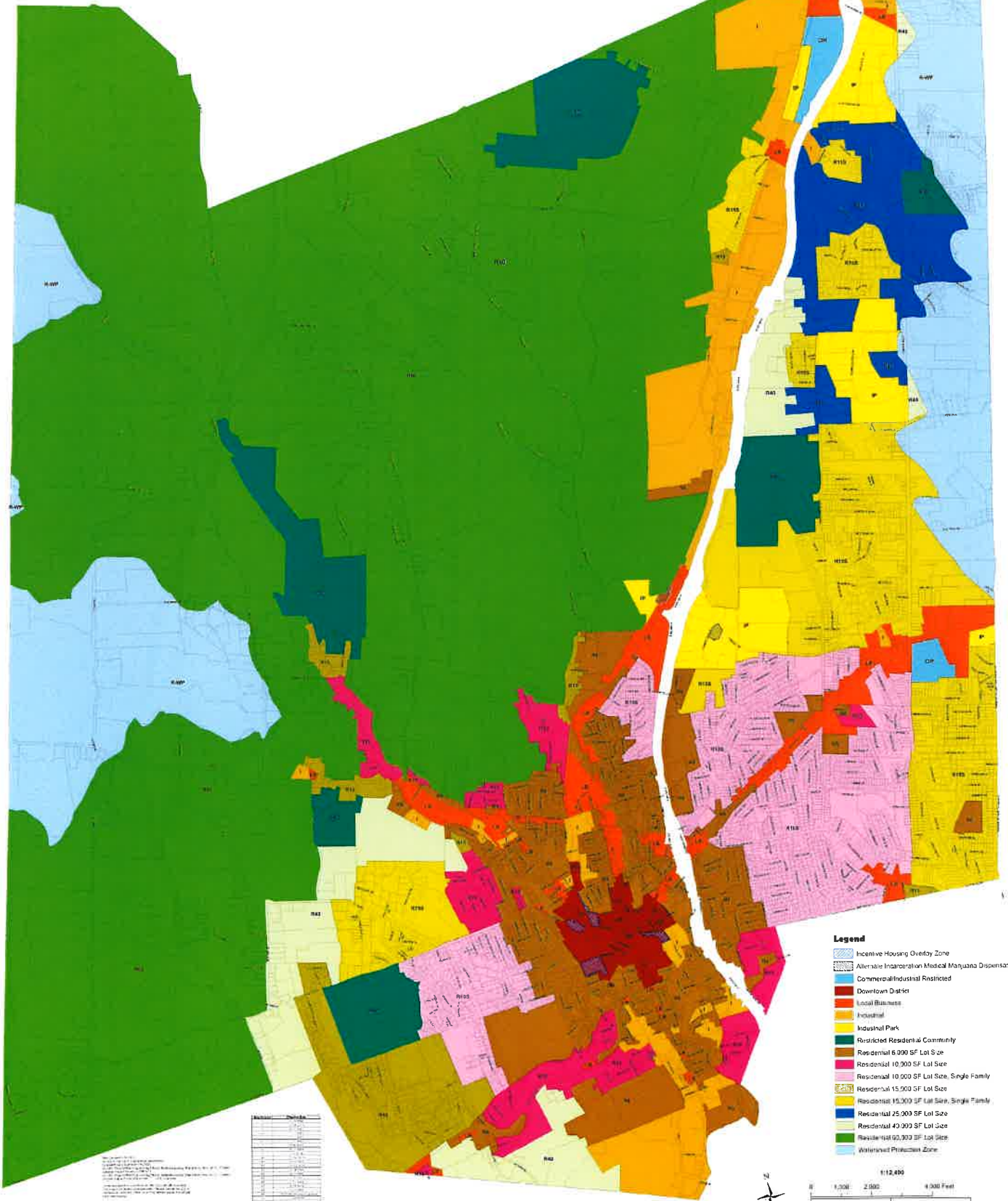
The Allen Dam and Crystal Lake watersheds are adjacent to each other but stream flow is separated by a dike at Allen Dam Reservoir on University Drive in Torrington.

Properties on the Crystal Lake Watershed are not inspected for compliance of CT State Health Dept. standards and requirements for watershed protection.



TORRINGTON
CONNECTICUT

ZONE MAP



- Legend**
- Incentive Housing Overlay Zone
 - Alternative Incorporation Medical Marijuana Dispensary Overlay Zone
 - Commercial/Industrial Restricted
 - Downtown District
 - Local Business
 - Industrial
 - Industrial Park
 - Restricted Residential Community
 - Residential 6,000 SF Lot Size
 - Residential 10,000 SF Lot Size
 - Residential 10,000 SF Lot Size, Single Family
 - Residential 15,000 SF Lot Size
 - Residential 15,000 SF Lot Size, Single Family
 - Residential 25,000 SF Lot Size
 - Residential 43,000 SF Lot Size
 - Residential 60,000 SF Lot Size
 - Watershed Protection Zone

Map prepared by the City of Torrington Planning and Zoning Department. The map is for informational purposes only and does not constitute a contract or warranty of any kind. The City of Torrington is not responsible for any errors or omissions on this map. The map is subject to change without notice.

Zone	Description
RA1	Residential Single-Family
RA2	Residential Single-Family
RA3	Residential Single-Family
RA4	Residential Single-Family
RA5	Residential Single-Family
RA6	Residential Single-Family
RA7	Residential Single-Family
RA8	Residential Single-Family
RA9	Residential Single-Family
RA10	Residential Single-Family
RA11	Residential Single-Family
RA12	Residential Single-Family
RA13	Residential Single-Family
RA14	Residential Single-Family
RA15	Residential Single-Family
RA16	Residential Single-Family
RA17	Residential Single-Family
RA18	Residential Single-Family
RA19	Residential Single-Family
RA20	Residential Single-Family
RA21	Residential Single-Family
RA22	Residential Single-Family
RA23	Residential Single-Family
RA24	Residential Single-Family
RA25	Residential Single-Family
RA26	Residential Single-Family
RA27	Residential Single-Family
RA28	Residential Single-Family
RA29	Residential Single-Family
RA30	Residential Single-Family
RA31	Residential Single-Family
RA32	Residential Single-Family
RA33	Residential Single-Family
RA34	Residential Single-Family
RA35	Residential Single-Family
RA36	Residential Single-Family
RA37	Residential Single-Family
RA38	Residential Single-Family
RA39	Residential Single-Family
RA40	Residential Single-Family
RA41	Residential Single-Family
RA42	Residential Single-Family
RA43	Residential Single-Family
RA44	Residential Single-Family
RA45	Residential Single-Family
RA46	Residential Single-Family
RA47	Residential Single-Family
RA48	Residential Single-Family
RA49	Residential Single-Family
RA50	Residential Single-Family
RA51	Residential Single-Family
RA52	Residential Single-Family
RA53	Residential Single-Family
RA54	Residential Single-Family
RA55	Residential Single-Family
RA56	Residential Single-Family
RA57	Residential Single-Family
RA58	Residential Single-Family
RA59	Residential Single-Family
RA60	Residential Single-Family
RA61	Residential Single-Family
RA62	Residential Single-Family
RA63	Residential Single-Family
RA64	Residential Single-Family
RA65	Residential Single-Family
RA66	Residential Single-Family
RA67	Residential Single-Family
RA68	Residential Single-Family
RA69	Residential Single-Family
RA70	Residential Single-Family
RA71	Residential Single-Family
RA72	Residential Single-Family
RA73	Residential Single-Family
RA74	Residential Single-Family
RA75	Residential Single-Family
RA76	Residential Single-Family
RA77	Residential Single-Family
RA78	Residential Single-Family
RA79	Residential Single-Family
RA80	Residential Single-Family
RA81	Residential Single-Family
RA82	Residential Single-Family
RA83	Residential Single-Family
RA84	Residential Single-Family
RA85	Residential Single-Family
RA86	Residential Single-Family
RA87	Residential Single-Family
RA88	Residential Single-Family
RA89	Residential Single-Family
RA90	Residential Single-Family
RA91	Residential Single-Family
RA92	Residential Single-Family
RA93	Residential Single-Family
RA94	Residential Single-Family
RA95	Residential Single-Family
RA96	Residential Single-Family
RA97	Residential Single-Family
RA98	Residential Single-Family
RA99	Residential Single-Family
RA100	Residential Single-Family

